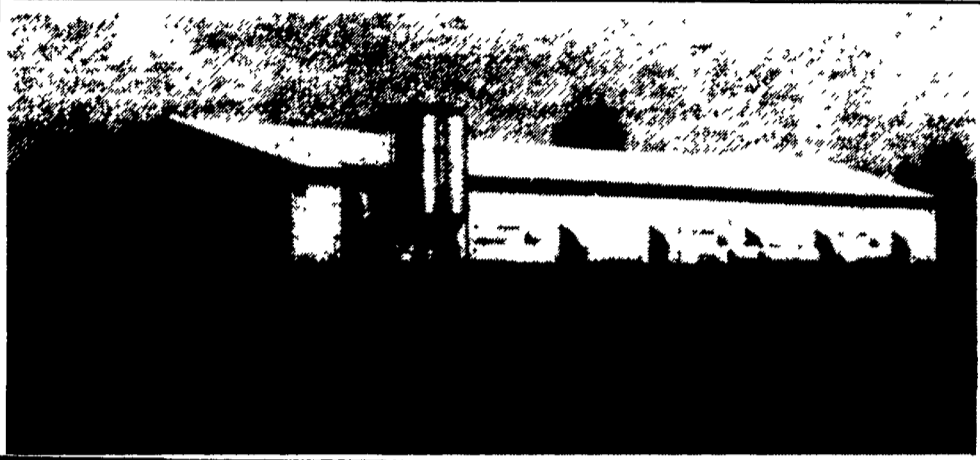


Thanks and Congratulations to

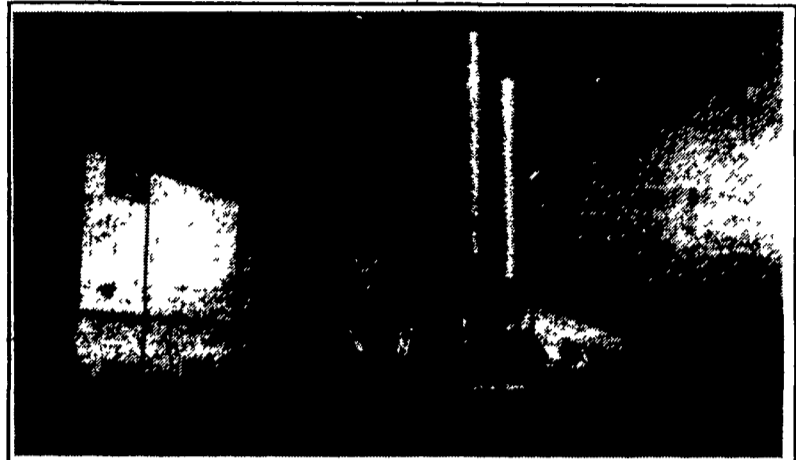
Calvin and Shawn Zerbe

Bernville, PA

On their all new **CHORE-TIME**® 2 plus 2 4 high pullet cage system with Chore-Time Ultra-Flo Feeding — 127,000 bird capacity



High rise pullet house 54'x408' with office storage room and bathroom and brown out over inlets.



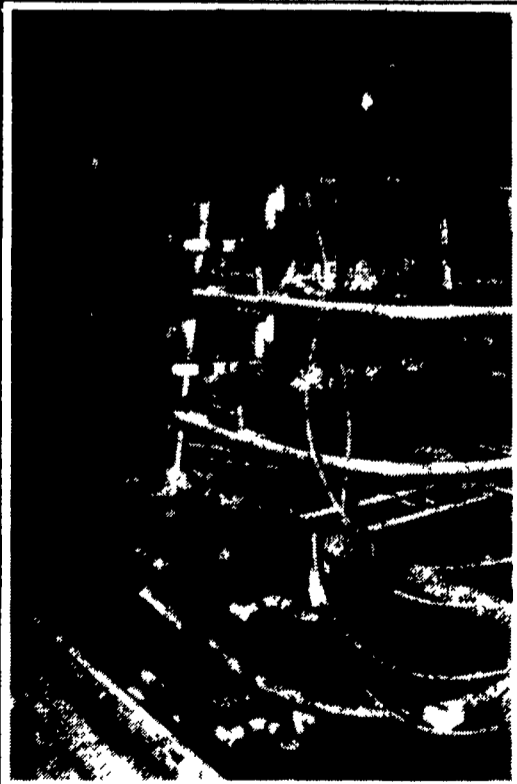
CHORE-TIME® Next Generation feed bin with safety cage over ladder **CHORE-TIME** dual auger fill system and feed cleaner system.



Steel beam with steel post set on concrete curbs at pit doors, double braced post and girders and painted steel on inside walls.



CHORE-TIME® galvanized after welded cage bottoms, backs and tops **ZIGGITY** all adjustable nipples with 2 nipples in every cage.



CHORE-TIME® 4-high 2 plus 2 pullet cage with **CHORE-TIME** stainless steel scraper blades and plastic dropping boards. **CHORE-TIME** Ultraflo feeder mounted outside of cage with adjustable cage front.



CHORE-TIME® Ultraflo Feeders outside of cage prevent birds from getting caught and killed. Adjustable front allows baby chicks to eat out of feeder from day 1 and as birds grow the feeder back height is increased to prevent feed waste.

Layer and Pullet Contracts Available. For free estimates and more information contact: **LARRY HORST** - office 1-800-673-2580, home (717) 560-5080

EQUIPMENT BY:

Northeast Agri-Systems, Inc.
Flyway Business Park
139A West Airport Road
Lititz, PA 17543
Ph: (717) 569-2702

1-800-673-2580



FEDERALSBURG, MD.
306 UNIVERSITY AVE.
(Formerly Long Lumber)
1-800-735-6361

STORE HOURS
7:30 A.M. - 4 P.M.
Monday-Friday
Sat. 8 A.M. - 11 A.M.

BUILDING BY:

KING CONSTRUCTION CO.
601 Overly Grove Road
New Holland, PA 17557
717-354-4740

Northeast agri systems