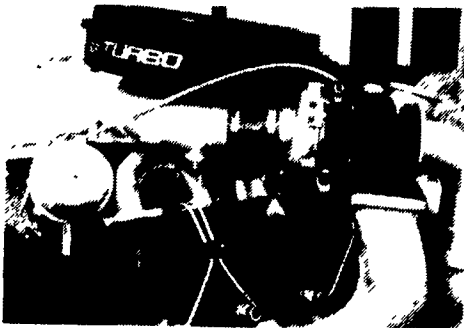


Have Your 6.2, 6.9 & 7.3 Diesel Engine Turboized Before The Busy Season
Call Us & Ask About The New Wastegated Turbo For The 7.3 Engine

PARKVIEW GARAGE, INC.
AMERICAN & FOREIGN DIESEL SPECIALIST
A.T.S. TURBO SYSTEMS

39 PARKVIEW HGTS. RD. EPHRATA, PA 17522
P.O. Box 246 Ph. (717) 733-9691

Poor Performance and Workmanship
Go Along w/Cheaper Prices.

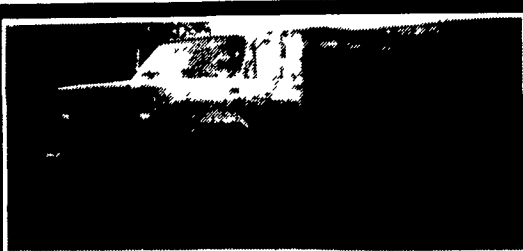


THOMPSON MOTORS INC.

Repairable Vehicles Bought & Sold

Springtown, PA 215-346-8588

- 92 F250 Super Cab, R.side damage.....\$6,500
- 87 Astrovan, Ext. Fire.....\$3,900
- 90 F250 4x4, R.front damage.....\$6,500
- 91 Dodge D150, flood.....\$5,500
- 88 Jeep Cherokee Ltd.....\$7,500
- 88 Dodge Dakota 4x4, flood.....\$3,500
- 90 Eagle Summit, front damage.....\$2,500
- 91 Blazer, S10, Stripped.....\$7,500
- 89 GMC Conv. Van.....\$7,500
- 94 Ford ranger, front & right side damage.\$4,500
- 86 Isuzu Trooper, left side damage.....\$3,500



'79 CHEVY C-70
PS, 5 & 2 Trans., 90,000 Miles,
Hyd. Tilt Bed, Like New Rubber,
Just Inspected. **\$7000** obo

CALL 717-397-0035

TRUCKS

- '92 F350 STAKE DUMP
V-8, 5 Spd., 16,000 Miles
- '93 F150 SUPER CAB XLT
5.0L, A/C, A/OD, Power Equipment
- '93 CHEVY 3500 S/CAB 4x4
6.5L Turbo Diesel, A/C & More
- '92 F250 HD 4x4 XLT
A/C, 460 V-8, A/OD
- '91 RANGER STX S/CAB 4X4
V-6, A/C, 5 Spd.
- '91 F150 4x4 XLT
4.9L, A/C, A/OD, 37,000 MILES
- '93 RANGER XL, 4X2
2.3L, 5 Spd, 12,000 Miles
- '92 DAKOTA SUPER CAB
LE PKG., V-6, A/C, A/OD
- '87 MAZDA B2000 SUPER CAB
5 Spd., A/C
- '93 F350 CREW CAB XLT 4X4
7.3L Diesel A/OD, A/C

CARS

- '92 CHRYSLER NEW YORKER
6 Cyl., A/C
- '89 DODGE DAYTONA
Shelby, A/C, A.T.& More
- '92 CHEVY Z-24
V6, A/OD, A/C
- '93 TAURUS GL SW
3.0 L, A/OD, A/C, 11,000 Miles
- '92 TAURUS L SW
V-6, A/OD, A/C, 35,000 Miles
- '92 GRAND AM
A/C, AT, 25,000 Miles
- '85 LINCOLN TOWN CAR
Loaded, Only 55,000 Miles
- '91 MERCURY CAPRI
Convertible, A/C, 5 Spd., 1-Owner
- '92 GRAND MARQUIS LS
4.6L, A/OC, A/C, 1-Owner
- '93 COUGAR XR7
V6, A/OD, A/C

MPV'S

- '94 GRAND CHEROKEE LAREDO
Power Equipment
- '93 GRAND WAGONER
Loaded, 20,000 Miles
- '89 JEEP CHEROKEE 4 DR
4.0L, A/OD, A/C
- '92 WRANGLER SAHARA
4.0L, 5 Spd., A/C, Soft Top
- '90 WRANGLER
A/C, 4.0L, 5 Spd., Hard Top
- '84 AEROSTAR XLT
All Wheel drive, X-Length, Dual A/C
- '94 EXPLORER 4 DR XLT
A/C, A/OD, 1 Owner, 22,000 Miles
- '91 EXPLORER 2 DR
Eddie Bauer Loaded
- '91 PLYMOUTH VOYAGER
A/C, AT, 1-Owner, 38,000 Miles
- '92 WRANGLER ISLANDER
4.0L, A/C, 5 Spd.

**ENGLE-RISSINGER
AUTO GROUP**

Rt. 147 Just North of Halifax
Halifax, PA 17032
The Call's On Us 1-800 242-8075
1 717-896-3421

Call Now For
Unbelievable
Prices



Eby & Trailer
Enterprises Introduce

MAVERICK The New Name
for Value



The Maverick Gooseneck Trailer puts top quality within reach of every budget For superior structural integrity, the Maverick is built with the same materials and engineering found in larger Eby trailers without compromise to the rugged frame and undercarriage for which Eby is famous In the Maverick, Eby has standardized dimensions and equipment to create an exceptional value production trailer Why settle for less when Eby quality is so affordable?

IMPRESSIVE STANDARD SPECIFICATIONS INCLUDE:

- 20' Long, 6-1/2' Inside Height
- 7' or 7-1/2' Wide
- All-Aluminum Undercarriage (an Eby exclusive)
- Tapered Fuel Saver Nose
- 7,000 lb Rubber Ride Axles
- 10-Ply Steel Belted Radial Tires
- Full Swing Rear Gate with Half Slider Door
- Full Drop Down Nose Gate
- Outside Center Partition Release
- 33" Opening Side Door
- 1/8", 6061-T6 Diamond Plate Aluminum Floor
- All Sealed Beam Lights, including 2 Dome Lights
- Cast Aluminum Front & Rear Corner Caps



M.H. EBY, INC.

"Revin' to take care of ALL your trailer needs."

Trailer Enterprises
13121 Maugansville Rd., Hagerstown, MD 21740
301-791-5343

DIESEL - 6.2 - 6.9 - 7.3 - CUMMINS TURBO

C. & A. MOTORS

1115 Harrisburg Pk.
Carlisle, PA 17013
(717) 249-6932



1993 Ford F-350 XLT 4x4, 7.3 Diesel, 10,000 GVW, AT, AC, Tilt, Cruise, PW, PDL, P, Mirror, P Seat, Black Beauty, 1 Owner, Super, Super Rare, Don't Wait Call For Details!



1992 Ford XLT F250 4x4, 7.3 Diesel, 1 Owner, AT, AC, Tilt, Cruise, PW, PDL, 2 Tone Paint, Rare, Call Today. 3 In Stock



1991 Dodge LE 250 4x4, Cummins Turbo Diesel, AT, AC, Tilt, Cruise, PW, PDL, 2 Tone Paint, New Truck Trade, 1 Owner.....Now \$19,900



1989 Ford F-250 XLT Lariat Super Cab 4x4, Auto, PS, PB, Air, Tilt, Cruise, PW, PDL, 8,800 GVW, 460 EFI, Heavy Duty Towing Pkg., 1-Owner, 50,000 Mi., Tu-Tone Paint, Light Group, Local Ford Trade



1990 Ford F-250 XLT Lariat 4x4, 7.3 Diesel, 8,600 GVW, 5 Spd. w/Overdrive, Air, Tilt, Cruise, Dual Tanks, 60,000 Mi., Light Group, Nose & Grill Protector, Class 3 Hitch, New In Wrapper.



1990 Ford F-350 Crew Cab 4x2, Auto, AC, 460 V-8, Elec OD, Heavy Duty Work Tk., in Good Overall Cond\$12,900*

*STRAIGHT SALE PRICES. DOES NOT INCLUDE TAXES, TAGS, DOCUMENTARY FEE!

OVER 60 YEARS IN BUSINESS!
WOLF MOTOR CO.

ROUTES 72 & 283, LANCASTER, PA 17601

**CENTRAL PA'S
FORD TRUCK DEALER**



Sales Reps.
Charlie Burke

Gary Brenneman
Dennis Asel, Mgr.

717-299-4331

Toll Free 800-637-6612



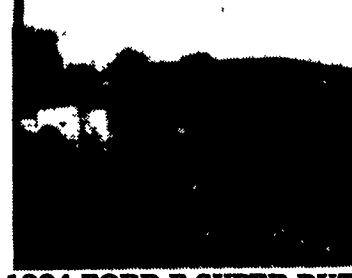
**1994 F350 SUPER CAB
DUALY XLT**
7.3L Diesel, 5 Speed Trans., 44,000
Miles **\$21,970**



1986 F350 DUALY
460 V8, 5 Speed, 90,000 Miles
\$6,900



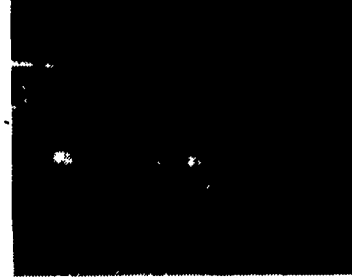
(2) 1994 - E350
14' Supreme Bodies, (1) 7.3
Liter Diesel, Auto
(1) 351 V8 Gasoline



1994 FORD F SUPER DUTY
15,000 GVW, Power Stroke Diesel, 5
Speed Trans., 12' Dumping Stake Body
\$26,400



1991 FORD F800
14' Stake Body, 165 HP Diesel,
Auto, 20,000 GVW
\$16,500



1987 F350
9' Flat Bed Set-up For Towing, 460,
V8, 5 Speed
\$5,700



1987 FORD CF7000
29,500 GVW, 170 HP Diesel, Auto,
22' Van Body w/Lift Gate 73,000
Miles **\$13,800**



1989 F800
Single Axle Tractor Sleeper, 240 HP
Diesel, 10 Speed, Air Ride Susp.
\$14,400