

1988 GMC 6000 Cattle Truck, 16' Eby Body w/ Warn Winch. Excellent Condition, Recently Inspected. (717)297-3580.

1988 Mercedes 6-wheeler, low mileage, 24', fully insulated body, excellent condition. Salisbury, MD, (410)749-4486.

1988 F-350 Super cab, 4x4, 460, auto, power windows, power locks, loaded, Centurian conversion, Burgundy/Silver, 80,000K, very good condition, \$12,000. 412-586-6816.

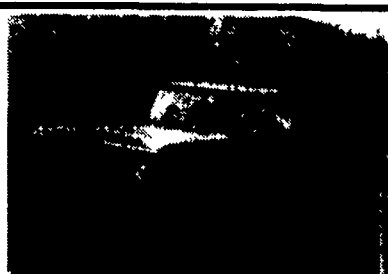
1976 International w/hyd. unloading webb, beaters in front w/cross conveyor. 717-529-2051

1975 GMC grain truck, 16', good condition, 30,000 lb. 717-393-1490.

1976 GMC 65 series, 16' flatbed dump, 23,160 GVW, hydraulic brakes, 5+2 speed rear, 366 engine, has noise, \$1800 OBO. 717-484-2254.



3 Racks \$125 Each



1979 Dodge Crew Cab \$640 OBO



1967 Ford Dump \$1500 OBO



1975 Ford Tanker \$1,000 OBO



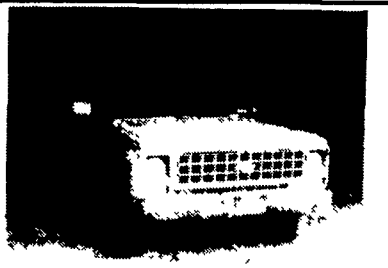
1974 International Tractor \$4000



Damaged Tractor Parts

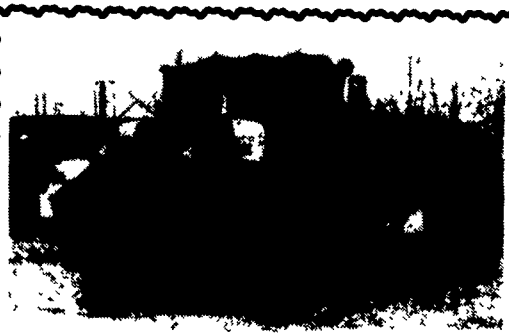


1986 GMC \$1000 OBO



1980 Chevy Crew Cab \$1200 OBO

**J.M. Young & Sons, Inc.**  
717/935-2141

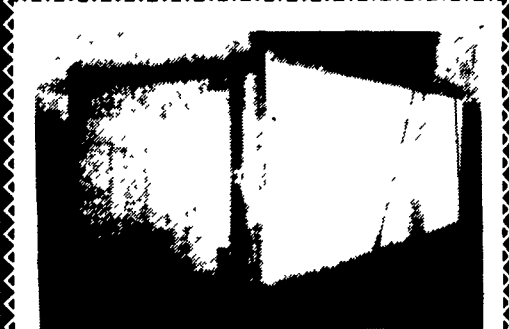


**MACK 6x6 TRUCKS**

Cummins V8 Diesel Jake and full Air Brakes P.S. 1400/24 Tires Double Frame Rear Drag Winch (50,000 lbs.). Differential Locks. (60 Tons) Hauling Capacity. Like New Only 800-17,000 Miles. A must for every Farmer.

**\$3,500 to \$12,500**

(814) 834-1018 St. Marys, PA

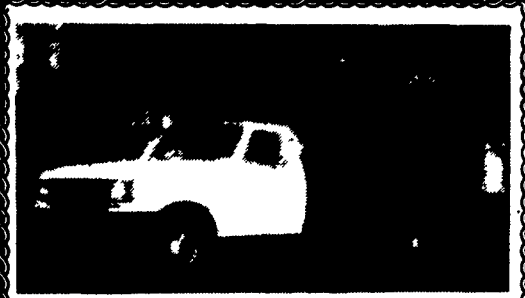


1987 MORGAN 20'9" Aluminum Van Body, Elevator Lift Gate, Side Door, 7'8" High

**\$1,550**

Call 1-800-345-2829

Curry Supply Co. Curryville, PA



**1988 FORD F-350**

(11,000 GVW) 7.3 Diesel, 4 Spd./ Overdrive, PS, PB, AM/FM Cass., 80,000 Miles With 12 Ft. Dump

**\$11,600**

**COUNTRYSIDE AUTO SALES**

(717) 865-3488

(717) 664-2170



**GMC 2500 SIERRA SL**

Ext. Cab, FI 4.3 Auto/Overdrive, PS, PB, Air, AM/FM Stereo, Full Rear Seat, Bedliner, Good Cond., Light Blue Finish, Blue Vinyl Int. 76,000 Miles

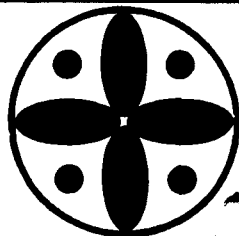
**COUNTRYSIDE AUTO SALES**

(717) 865-3488

(717) 664-2170



73 GMC, T/A, Diesel, Prentice G Loader, Fair Condition, \$7,500 OBO (410) 833-6083



**HALDEEMAN**  
FORD • KUTZTOWN

**QUALITY PRE-OWNED TRUCKS, VANS & 4x4's!**  
OVER 50 AVAILABLE!

**93/GN Stock Trailer**  
20'  
**\$3,700**  
717/222-9815

**MOTORS**  
New & Rebuilt  
350, 366,  
427, 454  
6.2 Diesels  
Rebuilt & Used  
Will install  
Roll Back Service  
(at cost)  
717-762-6415



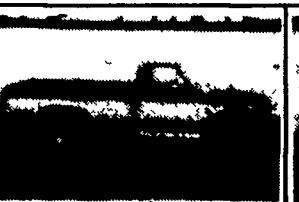
**91 RANGER XLT SUPER CAB**  
5 Spd., Sport Wheels, AM/FM/Cass, Bedliner, 18,000 Miles Was \$10,995  
**NOW \$9,995**



**1993 F-150 4x4 XLT**  
V8, Auto, PW, PL, Air, Cass  
**\$20,995**



**1992 DODGE CARAVAN**  
6 Cyl., Auto, Air, Bucket Seats  
Was \$14,595  
**NOW \$13,595**



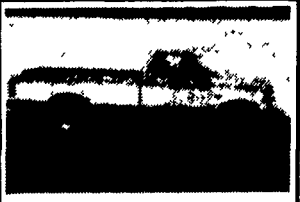
**85 F-150 V8**  
Auto, Air, PS, PB, Super Clean  
Was \$6,995  
**NOW \$6,495**



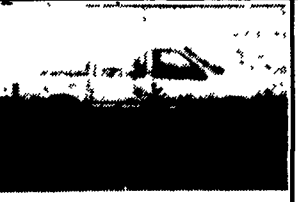
**1989 FORD RANGER**  
4x4 V6, 5 Sp., Air, Running Boards, ONLY 30K!!  
Immaculate  
Was \$12,995  
**NOW \$12,495**



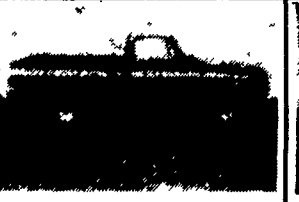
**1995 FORD WINDSTAR**  
Drive Away In The Best, Over 30 Available  
Starting At **\$19,995**



**1992 FORD F-150 XLT**  
V8, Auto, PW, PL, Air, Cruise, Tilt  
Was \$16,995  
**NOW \$15,995**



**91 CARAVAN AWD**  
Quad Buckets, Loaded, 3.3 V6, Only 31,000 Miles  
Was \$17,595  
**NOW \$16,495**



**1987 CHEV C-10 PU**  
Short Bed, V8, 4 Speed, Sharp  
**JUST TRADED**



**1993 FORD AEROSTAR XL**  
Plus All Wheel Drive, 6 Cyl., Auto, Air, Cruise, PW, PL  
Was \$16,995  
**NOW \$15,995**

**HALDEEMAN**



**610-683-3553**

FREE SERVICE LOANERS • EVENING SERVICE • LIFETIME LUBE & OIL

HOURS Monday - Thursday 8:30 to 9:00  
Friday & Saturday 8:30 to 6:00

MAIN ST. • KUTZTOWN  
1 Mi South of Rt. 222