

**32 MISCELLANEOUS**

**FINALLY! THE BLANKET CHEST HINGE EVERYONE'S BEEN WAITING FOR...**



Hinge Features  
Spring Loaded Over Center  
Stay Open  
Soft Close Beyond Center

\$8.95/set  
(1 set per chest)  
in PA add 6% sales tax  
Add \$3.00 for S & H  
for less than 5 sets  
5 or more sets, prepaid

Call for Quantity Discounts  
Dealer Inquiries Invited.

Also Available: Drop Leaf Hinges, Square Drive Wood Screws, Solid Wood Glued-Up Blanks, Chair Seats, Table Tops, Millwork, etc.

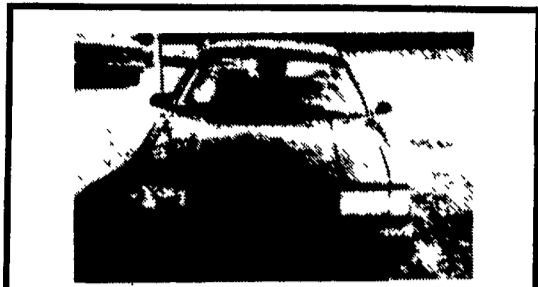
**Zimmerman Wood Craft Company**

227 Wood Corner Road - Litz, PA 17543  
Phone 717/733-6698 • 800/495-5823

**34 AUTOS**

WANTED: '85-'86 Jeep Cherokee/Wagoneer w/ diesel engine. 215-481-4369 leave message.

1986 Lincoln Towncar, power windows, power locks, air, all luxuries, Alpine stereo cassette w/CD changer, 95,800K, 1 owner, Champagne color, excellent condition, \$4500 412-586-6816.



'92 Ford Tempo GL V6, 4 door, red, 11,000 miles, like new, R title  
**\$7,600**  
**Burkholder's Auto**  
Danville, PA.  
717-437-3848

22' flatbed dump, \$4300. 717/354-3105

(2) pickup truck bodies for Dodge pickup, 6'x8', \$250/ea OBO. Baltimore Co 410-357-4073 after 7PM or leave message

'79 Int Scout, 4WD, automatic, 345 engine w/6 1/2" Meyers snow plow, \$1,500 OBO (301)898-7856.

'83 GMC flat bed, 23,000 lbs., new parts, good condition 717-899-6566.

'88 Chevy Silverado, 1 ton, 4x4, 454-V8, air, cruise, tilt, 4 speed, P/W, P/L, only 54,000 miles, must see! \$14,900. (717)733-0850 Dir

'89 Ford F-250, 4x4, 8600 GVW, 351-V8, 5 speed, air, lock out hubs, plus many more options, \$11,900. (717)733-0850 Dir.

'89 Ford F250, 4x4, XLT Lariat, AT, AC, 351 engine, 410 rear, blue/white, \$10,000. (301)898-7426.

'90 Dodge D250, 3/4 ton club cab, 318 EFI, auto, PB, PS, AM-FM, 7,400 GVW, 36,000 miles, new radials, silver & white, excellent condition, \$11,995. 717-733-2873

'90 Dodge LE 150 Club Cab, 4x4, 318 EFI, auto, PB, PS, PW, PDL, cruise, tilt, air, AM-FM, 6,400 GVW, 2-tone brown, local, 1-owner, excellent condition, \$13,995 717-733-2873

'91 Ford F150 Super Cab, 300 EFI, auto, PS, PB, air, AM-FM, dual tanks, 6,250 GVW, 37,000 miles, dark blue, \$11,900 717-733-2873

'91 GMC Rally STX 8 passenger, 350 FI, auto, PB, PS, PW, PDL, cruise, tilt, dual air, AM-FM, 39,000 miles, new radials, excellent condition, \$13,995 717-733-2873

'93 Ford XL F150 Super Cab, 300 EFI, 5 spd, PS, PB, air, AM-FM, 6,250 GVW, 38,000 miles, red, excellent condition, \$13,500 717-733-2873

'93 Ford XLT F250, 4x4, super cab, 351 auto, PS, PB, PW, PDL, cruise, tilt, air, 17,000 miles w/balance of factory warranty, blue & silver, like new, \$23,500 717-733-2873

'94 Dodge 3500 1 ton, 9' stake bed, Cummins turbo diesel, 5 spd, PS, PB, AM-FM, 11,000 GVW, 14,000 miles Will sell with or without bed w/bal. of factory warranty, red, excellent condition, \$22,500 717-733-2873

'94 Dodge Ram 3500 Laramie SLT, dualie, Cummins turbo diesel, auto, PS, PB, PW, PDL, cruise, tilt, air, trailing tow package, 410 ratio, 7-year 100,000 mile engine warranty, black & red, less than 100 miles 717-733-2873

BATTERIES \$25-\$35. Let us recondition your old battery and save over 50%. We buy old batteries PowerPro Battery, beside Lancaster Stockyard, 717/399-9545.

**35 TRUCKS & TRAILERS**

6spd Allison Trans. 800, 13spd, Road Ranger, \$700 1973 Ford crew cab, 4WD 5spd 225 CAT, \$2,000 (717)286-0650

1966 Rambler American convertible, runs good, needs some work, asking \$950 717-538-1771

1969 Mack R model 237, 5spd tandem, good condition, inspected w/25 ton gooseneck trailer, \$6,000 After 6pm, (610)593-7045

1970 Int stake truck, model 1600, 16' rack body, GVW 26,000, 68K, trailer hitch, good condition, runs good, inspection completed, \$3,500 (215)855-5685

1972 Brockway, 350 cummins, 10 speed, wetline, aluminum buds on front, Hendrickson susp tandem, good running condition, 1968 White truck, single axle, 220 cummins, 10 speed, 20" rubber, runs good, 1972 Fontaine flatbed, 40', 20" rubber, fixed tandem, good condition, Highway flatbed, 40' 20" rubber, sliding tandem 215-257-0101

1973 Chev 90 series, TRJ axle dump, 8-V71 Detroit RT09513, 17'5" steel body, 73280 GVW, \$6000 OBO 717-362-3537

1973 GMC triaxle dump truck, 671 Detroit, 13 speed, aluminum bed, \$5000 OBO 717-933-4092 8AM-5PM

1974 Ford L750, 1160 CAT diesel, 13 speed O.D., air seat, good condition, \$5000 OBO 610-273-9635.

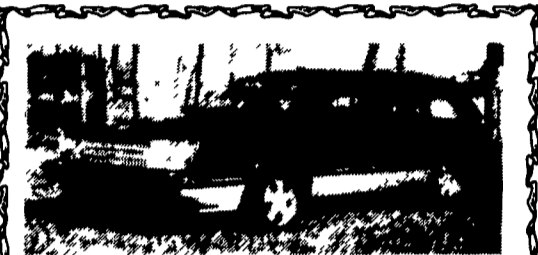
1974 International 4070A Cabover, 318 Detroit, 13 Speed, Wetline, Good Tires, Good Shape, \$2000 OBO (717)524-0249.

1975 Ford LN8000, 18' van with liftgate, AC, PS, 3208 CAT, 1120 tires, excellent condition, asking \$6000; 1982 aluminum Featherlite stock trailer, 24', excellent condition, asking \$10,000. 215-234-0587

**34 AUTOS**



**1986 CHEV CELEBRITY**  
F.I. 4 Cyl., Auto, PS, PB, Tilt, AM/FM Stereo, Air, Blue Finish, Cloth Int., 72,000 Miles, Local Trade-In  
**\$1,695**  
**COUNTRYSIDE AUTO SALES**  
(717) 865-3488  
(717) 664-2170



**1985 CELEBRITY STATION WAGON**  
V6, Auto, PS, PB, Tilt, Cruise, Air, AM/FM, 3rd Seat, 62,000 Miles, Needs Paint  
**\$1,850**  
**COUNTRYSIDE AUTO SALES**  
(717) 865-3488  
(717) 664-2170

**32 MISCELLANEOUS**

10'x69' Fleetwood, 3 bedrooms, must move trailer, \$1200 OBO 717/664-2769 Lancaster

50 Ton Howe Dial Scale, Model CDSP, S/N 12001121, 60' 3 Section Divided Concrete Deck York County (717)792-9930

(80) treated posts, used, excellent condition, 10'long, 5"-6" tops, \$4/ea 610-965-4429

American Floor Sweeper, electric, self-propelled, 48"W, model 2000B, \$1500 717/354-3105

Camping 16X24 Tent, Wood Stove, Cooking Stove, Four Double Bunk Beds \$500 (215)723-2979.

Compressor for walk-in freezer or cooler

Compressor for walk-in freezer or cooler, excellent for low temp, 3hp 208-230 volts, 3hp Can handle large capacity, excellent condition, \$275 Schuylkill County (717)467-2679

**32a ANTIQUES**

JD 830 electric w/PTO, Susquehanna County Evenings or leave message, (717)222-4432

JD Kansas City 125th Aniv Gold Plated 1/16 Scale Toy 1935 Model A Tractor Limited Edition \$1000. (816)322-1898

**33 RECREATIONAL VEHICLES**

1985 Aladdin 31' motor home w/bath, sleeps 8, 454 GM, 11,000 miles, \$22,500 412/239-5431

1989 Coleman Sequoia Pop-up Camper, \$3800 OBO 717/896-8399

1993 Ford Econoline Van, V-8, 302 Engine, Braun Fully Automatic Wheel chair Lift, 4 Pt. Wheel Chair Tiedowns, hi-Top Conversion, Electric Seat, Outside Control Box. Power Door Openers, 4 New Radial Tires, New Front and Rear Brake Packages. **\$5,500**

Call (717) 626-0234



**1988 DODGE CARAVAN**  
F.I. 4 Cyl., 5 Speed, PS, PB, Air Cond., AM-FM Stereo, 7 Passenger, Grey Cloth Int., Blue Finish Only 61,000 Miles  
**\$4,995**  
4 Caravan In Stock  
**COUNTRYSIDE AUTO SALES**  
(717) 664-2170



**1989 FORD AEROSTAR EXTENDED VAN**  
F.I., V6, Auto/Overdrive, PS, PB, Tilt, Cruise, Air, AM/FM Stereo, 7 Pass., Burg. Finish, Grey Cloth Int., Only 59,000 Miles  
Priced To Sell **\$6,995**  
**COUNTRYSIDE AUTO SALES**  
(717) 865-3488  
(717) 664-2170

Bison 2 or 3-horse slant load, bumper pull, w/ dressing room, loaded w/ everything you need. New leftover demo model, never used Reg price \$4400, yours for \$3495. 301/791-5343 8-5 M-F, 9-12 Sat.

Cummins Super 250 engine, \$300. Fuller 10 speed trans. \$175 (410)867-1888.

Diesel Engines: Detroit, 318, 16V71, 12V71, 671, V-653, 6V92, 8.2; Chev. diesel 6.2. Other engines and truck parts. Reasonable prices. Call after 6PM, (610)944-9871

Featherlite aluminum hog & sheep pickup topper, new leftover, model 8255, will fit Chev. 88 & up full size pickup. We will install. \$900, reg. price over \$1600. 301/791-5343 M-F 8-5, Sat. 9-12.

Flatbed Gooseneck 16', new, leftover, (2) 5200lb. axles, brakes all wheels, adj coupler We can take care of hookup & temp. tags. \$3350. 301/791-5343 M-F 8-5, Sat. 9-12.

FOR SALE: 1977 Conv. Marmon 400 CAT, runs great Call 717-733-6642

1973 Mack DM tri-axle, long wheelbase, 6 speed trans, 237, 44 rears; 1980 Mack MR, 237, 5 speed, 44 rears, long wheelbase; 1972 Mack DM tri-axle dump truck, 237, 6 speed, 44 rears, 1975 International roofback w/cab, diesel Many different parts for Mack trucks 215-286-5172, 717-354-8946.

1974 Diamond Rio dump truck, single axle, 238, 10spd RR, \$3,500. After 6pm, (610)593-7045.

1993 Chev Silverado crew cab, dually, 6.5 turbo diesel, auto, loaded, black, 30K, custom aluminum bed, gooseneck and receiver hitches, 26' triaxle gooseneck trailer, \$24,500 or will separate. 609/358-1281.

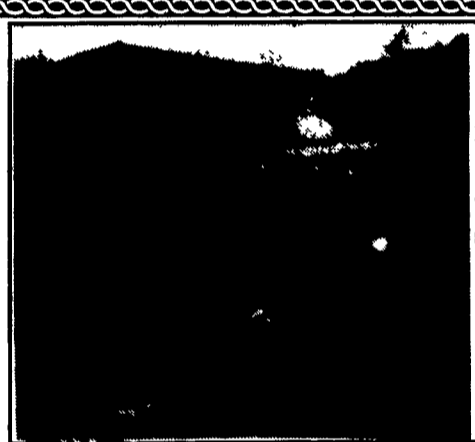
1993 Gooseneck cattle trailer, 6x16, excellent condition, \$3,300 (717)741-2079, (814)862-0640.

1978 F-600 dump truck w/ salt spreader, 24,000 GVWR, \$4,000. (610)692-2979.

1981 Int. dump truck w/ new stainless salt spreader, 33,000 GVWR, \$10,500. (610)692-2979.

**TIRONIE TARPS**

21" TARP STRAPS...\$23<sup>95</sup> per 50  
2"x27" HEAVY DUTY RATCHET ASSEMBLY...\$19<sup>95</sup>  
SHOP AROUND - THEN CALL  
**1-800-874-2928**  
FAX: (717) 584-3127



Used Mack - Model B-30 Gas Engine  
**\$1,700 or Best Offer**  
**717-438-3354**



**INTERNATIONAL 6x6 BRIDGE TRANSPORTING STAKE BODY TRUCKS**

Front Winch, PS, Air Brake, 1400/20 Tires, 21 ft. Bed with removable steel racks. Continental 6 cyl. engine. LIKE NEW 600-2,500 Miles. Excellent for off road heavy duty cargo transporting with their all wheel drive and ability to climb a maximum grade of 70 degrees. Double Frame. A must for every farmer.

**\$2,500 to \$10,500**  
**(814) 834-1018 St. Marys, Pa.**



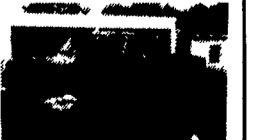
**AUTO BODY & SALES**

1701 B Division Hwy  
New Holland, PA • 717-355-0611

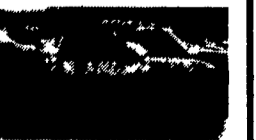
Specializing in Rebuilt Collision Damage Vehicles



'91 Buick Skylark 2.5L, AT, PS, PB, AC, 33,000 Mi., Interior Fire On Drivers Seat, Needs Interior, Good Title  
**\$2,800**



'93 Ford F-150 XL 300, 5 Spd., Cass., 67,000 Miles, Left Front Damage, Factory Black  
**\$4,800**



'94 Chevy S-10 CS, Extended Cab, 2 WD  
**\$4,900**