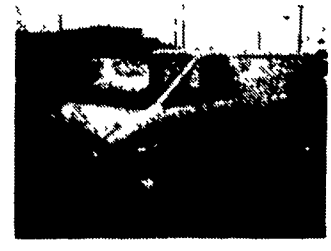


# OVER 90 TRUCKS

# TRUCK WORLD

717-394-7005



**1991 Ford Aerostar AWD**  
4.0L 6 Cyl. Auto, A/C, Cargo Vans. Lt. Blue, 2 to Choose From #F223 & F225



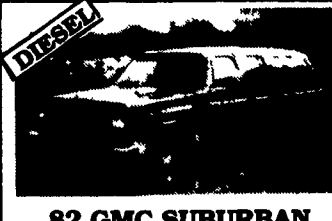
**1987 FORD F250 S.C. 4X4 DUALY**  
460 V8, 4 Speed XL Pkg Cass., Blue/White #F277



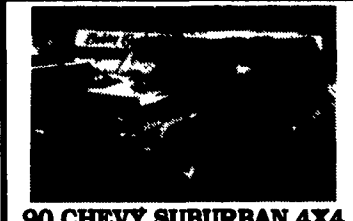
**1988 CHEVY K2500 4X4 DIESEL**  
Ext. Cab, 4x4, 6.2 Diesel, AT, Air, Cruise, Tilt #C203



**1992 Ford F350 Flat Bed DIESEL**  
7.3 Diesel, STK, AC, XLT, PW, PL, CR, Tilt, Black, 23273 Miles #F269



**82 GMC SUBURBAN DIESEL**  
3/4 Ton, Diesel, Auto, A/C, 2-Wheel Drive, Nice Shape, Tow Pkg, Black & Gray #G123



**90 CHEVY SUBURBAN 4X4**  
350 Auto, AC Frt & Rear, P.W., P.L., Cruise, Tilt, Loaded Silverado, Black Silver, 46,000 Miles #C209



**88 Jeep 4x4 Wrangler**  
6 Cyl, Stick, Hardtop, Red #J103



**90 FORD F450 SUPER DUTY DIESEL**  
Stake Body w/Ladder Rack, 7.3 Diesel, 5-Spd., PS, PB #F274



**1990 CHEV. K1500 4X4**  
350 V8, 5-SPD., A/C, Cruise, Tilt, Alum. Wheels, Silverado, 49,000 Miles #C208

**93/GN Stock Trailer 20' \$3,700 717/222-9815**

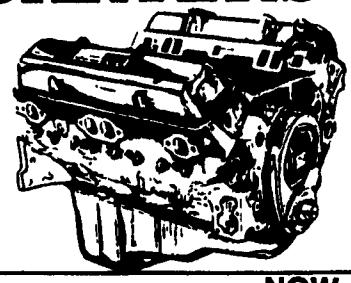
Truck body for hay and grain. 22'Lx8'W w/8' deck over cab. 4'H removable sides. Hauls 320 bales of hay or 250 bushels of ear or shell corn \$1,200 Baltimore Co. MD Call after 7pm or leave message. (410)357-4073

WANTED: Dodge 250 or 350, 4x4, Cummins 5 speed cab and chassis. 804-332-5230  
WANTED Landoll equipment trailer 717-534-1253

## JONES GM PARTS CENTER

IS YOUR **Goodwrench ENGINE HEADQUARTERS**

GM GOODWRENCH 350 V8 1973-85 Part Number 10067353  
New Engine - Not Rebuilt  
36 Month or 50,000 Mile Warranty  
**\$1199<sup>00</sup>**  
New Engine - No Core Fee



**HIGH PERFORMANCE ENGINES NOW IN STOCK**  
350-300 H.P. — **\$1695<sup>00</sup>** 350-345 H.P. — **\$2825<sup>00</sup>**

Call 394-0711 for prices on other New or Remanufactured Goodwrench Engines. 2.5 Liter thru 454 cid. Gas and Diesel

Chevrolet - Pontiac - Olds - Buick - Cadillac - GMC

**JONES GM PARTS CENTER**  
1335 Manheim Pike, Lancaster, PA 17604  
Hours: Mon.-Fri. 7:30-5  
(717) 394-0711



LANCASTER'S LARGEST GM Truck Dealer & We're Getting Bigger

**JONES** PONTIAC • HONDA GMC TRUCK  
1335 Manheim Pike, Lancaster

Prices based on straight sale, Tax & Tags extra. Trades accepted at actual cash value. Must present this ad at time of purchase for sale price.

**717-394-0711**

## JONES BEST BUY USED TRUCKS

 <b>'88 CHEV CONVERSION VAN</b> Starcraft, AT, AC, V8 #5264 Was \$11,995 <b>BLOW OUT \$7,700</b>	 <b>90 FORD BRONCO II</b> 4x4, XLT, AC, V6, 5 Spd., #5533 Was \$13,995 <b>SALE \$11,700</b>	 <b>'88 FORD BRONCO</b> V8, 5 Spd., XLT, AC #5571 Was \$12,900 <b>SALE \$10,700</b>	 <b>'89 CHEV S10 BLAZER 4x4</b> V6, 5 Spd., AC, Tahoe #5534 Was \$12,995 <b>SALE \$11,500</b>	 <b>'91 CHEV SUBURBAN 4x4 DIESEL</b> 3/4, AT, AC #5570 Was \$19,995 <b>SALE \$18,200</b>
 <b>'89 CHEV S10 PICKUP</b> 4 Cyl., 5 Spd., 43,000 Miles #5504 Was \$6,900 <b>SALE \$4,850</b>	 <b>'90 PONTIAC TRANSPORT</b> V6, AT, AC, 7 Pass. #5530 Was \$8,900 <b>SALE \$7,100</b>	 <b>'92 CHEVY C30 DUALY</b> 6.5 Turbo, Diesel, AT, AC, #5569 Was \$19,995 <b>SALE \$18,300</b>	 <b>'93 CHEV K15 XCAB 4x4</b> 5 Spd., V8, AC, Silverado #5517 Was \$22,995 <b>SALE \$20,800</b>	 <b>'93 CHEVY K20 4x4</b> 8600 GVW, Silverado, AT, AC, V8 #5568 Was \$22,900 <b>SALE \$20,700</b>
 <b>'89 CHEV S10 BLAZER 4x4</b> 4.3 V6, AT, AC, Tahoe #5506 Was \$13,495 <b>SALE \$10,800</b>	 <b>'94 SAFARI XT CARGO VAN</b> AT, V6, PS, Side & Rr. glass, 17 in stock #10246 List \$17,332 <b>SALE \$15,850</b>	 <b>'89 BRONCO II 4x4</b> V6, 5 Spd., XLT, AC, #5503 Was \$12,995 <b>SALE \$10,900</b>	 <b>'88 CHEVY XCAB 3/4 Ton</b> , AT, AC, V8, Silverado, Was \$13,995 #5440 <b>SALE \$11,900</b>	 <b>'88 CHEV C10 SILVERADO</b> AT, AC, V8, #5523 Was \$10,900 <b>SALE \$8,920</b>
 <b>'90 CHEV 3/4 4x4</b> AT, AC, V8, Silverado #5495 Was \$16,495 <b>SALE \$13,850</b>	 <b>'93 CHEV K15 XCAB 4x4</b> AT, AC, V8, Silverado #5520 Was \$23,900 <b>SALE \$21,400</b>	 <b>'91 FORD F150 XCAB 4x4</b> AT, XLT, AC, V8 Was \$19,995 #5547 <b>SALE \$17,900</b>	 <b>'89 CHEV SUBURBAN</b> AT, AC, V8, Silverado #5566 Was \$14,995 <b>SALE \$12,450</b>	 <b>'93 CHEV SUBURBAN 3/4 4x4</b> 454, AT, AC, Silverado #5561 Was \$29,995 <b>SALE \$28,300</b>