

FARMS

BEDFORD COUNTY

246 A dairy, 186 free-stalls, double 8 parlor.
228 acre livestock, bank barn, 2 silos
167 acre general, bank barn, double house
(Above 3 farms operated as 1)

John B Niesley Real Estate
4340 Crestview Road, Harrisburg, PA 17112
(717) 671-0655

ERA MASON DIXON REALTY

(410) 658-4911

MARYLAND FARM 85.67 Acre working farm, 63 acres tillable 22.7 acres pasture w/stream, large frame barn, 2 bottom unloader Harvestores, \$398,000

Ruth Carson White
(410) 658-5126

42 acres Snyder County, PA

30 cow tie stall and 200 veal calf barn, 14x60 silo w/unloader, pipeline barn cleaner, feed bin, lagoon. 5 bedroom house.

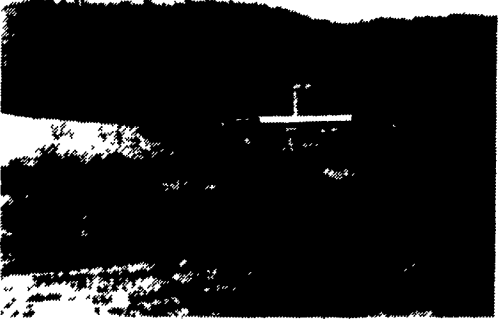
(717)837-0411

WE PAY CASH

For your financed
Mortgage, Trust
Deed, Business Notes
from all States
Cash today is worth
more than cash
tomorrow
Why Wait?
For a free quote
please call

GROFF FUNDING
717-664-5241

**Bradford County, PA
Columbia Cross Roads**



240 acre Farm, 2 houses, 2 barns (180'x85'), (40'x160'); 2 - 24'x90' concrete silos, complete manure facilities & storage buildings.

610-273-3761

Farms For Sale

- Beautiful Level, 106 Ac. Modern Dairy Setup, 68 tie stall barn w/approx. 100 TA. Call Ray.
- 46 ac. - 175 sow barn, 4 bedroom house, garage, mobile home - real nice - East Drumore Twp., Lancaster Co.
- 100 year old brick miller's house, 11 ac land, great setting - also old working flour mill and 6 ac. land - Call for details.
- 6800 sq. ft. commercial building with 4 ac. land in Quarryville boro, water & sewer - Many uses.
- Other farms and interesting properties for sale

If you have farms or properties to sell or need a property call Ken Rutt, Farm Consultant

Century 21 - Wagner - Hatton Assoc.
Quarryville, Pa

717/786-1300 office 717/786-3591 Home.

PENNA FARMS

CUMBERLAND COUNTY

153 acres, opened & wooded land, shale soil. Topography gently rolling, Newville area. \$1,000 per acre.

Charles Wenger, GRI, 263-0945
Wilbert Diehl 776-7707

GEORGE L. EBENER & ASSOCIATES REALTORS

139 W. High St., Carlisle, Pa.
Ph. (717) 243-6195

Mobile Home, 1983 Skyline, 14X64, 2 BR, Eat-In Kitchen, Great Condition, Washer/Dryer, New Hot Water Heater, Storage Shed, Front and Rear Decks, Must be Moved.

Asking
\$11,900 OBO
(610)255-4050

R251... Country living but minutes from town, 5BR remodeled home, on 5.65A w/large family room w/ fireplace, large yard. Large bank barn fenced area w/ spring... \$129,900 w/seller paying \$3500 in closing costs.

L87... Bratton Township, Mifflin County. 54.34A, w/over 1900 ft. frontage on state forest land. Has small trailer w/ well, septic, electric. Subdivision possible... \$85,000.

R259... Country Gentlemen. Own this 23A farmette. Has fenced pastures, small barn, frontage on Tuscarora Creek and RT 75... \$169,900.

L94... Monroe Township, Juniata Co. 48 tie stall dairy barn w/pipeline milking system, property has bank barn, 66x36, pole barn, 40x80, machinery building 30x50. Ready for dairy operation.

Call for details.
MARLIN H. FIELDS REAL ESTATE
717-436-8839.

ATTENTION
We purchase small or large tracts of land. Are you thinking about building lots, subdivision?
Call: Bob

717/653-1523
717/397-7101
JERRY FREY REAL ESTATE

100 ACRES - Bradford County - \$235,000. Beef fattening facility about 3 yrs. old. 600-700 head capacity. Standard perc site for new house. BRING OFFERS.

37 ACRES - Marticville Road/Silver Mine Road - \$194,900. Southern Lancaster County farm land. Ideal farm site.

187 ACRES - 34 Harry Stoudt Dr., Western Berks County - \$625,000. Operating dairy. Free stalls, double 8, 2 houses - stone with frame and log with frame.

89 ACRES - N. of Penryn, Lancaster County - \$379,900. Ideal horse farm setting. 50 acres are tillable. Stone home is available. Could subdivide some lots. Priced to sell!

65 ACRES - Lebanon County - \$549,000. Limestone dairy farm with 130 cow facility. 20 unit milking parlor & large freestall barn only 5 years old. Manure pit. 5 bedroom home with modern heat, kitchen, etc. Move-in dairy operation.

KINGSWAY REALTY
(717) 569-8701



4 Bedroom 2 bath brick & alum. siding rancher on 2 1/2 acre lot very quiet setting very private with apple & pear & plum & cherry trees. Very strong well with new pump & lines & new water heater, large fireplace in living room with full basement 1/2 of which is large family room. 1 car garage Near Codorus State Park. Empty ready to move in New floor covering.

York Co. Call for Appointment
717-694-9251

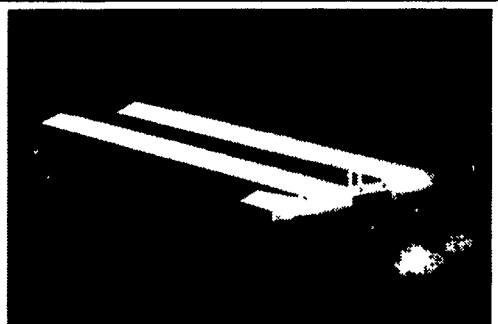
Small farmette on 10.09 acres w/barn, good for beef or horses, house w/ new siding & windows, lots of room, now only \$92,000 #1293

Potter County, 92 acre beef or horse farm, 45 wooded acres w/timber, 2 bdrm 1981 home, several barns & operating sawmill, \$115,000 #1336

Views that can't be beat! Unique home with many extras, finished bsmt w/jacuzzi, 2 car att garage, country living on 5+ acres, large pond. Must see at \$135,000 #1333

129 acre dairy or general farm, more acreage available, 75 cow stall barn, 3 bdrm ranch style home, only \$149,900 #1274

Hook REAL ESTATE AND INSURANCE
9 Cone Street
wellsboro, PA 16901
717-724-3500



200,000 LAYER OPERATION
Located in southern Lancaster County. Financial information available to qualified buyers. Modern facility with up-to-date equipment & back-up generator system. Agricultural zoning. 5 Bedroom home included.
Call 1-800-325-2131. Q11522

113 ACRES
\$100,000 Dairy farm with 93 acres tillable, stanchions for 51 excellent crop land.
Somerset Co. 1 mile N.W. from intersection of 219 & 653.

Century 21 AMERICAN HERITAGE Willow Street 717/464-4700
Quarryville 717/786-2131
Strasburg 717/687-0599

ADVERTISEMENT

The First National Bank of Mifflintown, Executor of the Estate of Esther W. Wingate, is soliciting bids for the purchase of a certain tract of real estate in Centre County, consisting of approximately 1,500 acres. The topography is dominated by a large east west valley. The tract is centered on the valley and is part of a very large contiguous area of timberland stretching into Clinton County to the north. The property as adequate access and would be well suited for a commercial timbering operation, or for recreational purposes.

Sealed bids are solicited to be opened **December 15, 1994**. A legal description of the property, a timber survey by consulting forester, Dennis R. Meiser, and copies of a survey of the property will be made available to qualified bidders.

To receive a bid packet, or request other information, please contact:

Jody D. Graybill,
Assistant Vice President and Trust Officer of the
First National Bank of Mifflintown,
P.O. Box 96, Mifflintown, Pennsylvania 17059, (717) 436-2144.

46 Acre Equestrian Estate
Located in magnificent Bucks County



A long private paved driveway leads to a stately centerpiece courtyard. The large 19th century farmhouse features living room with fireplace, formal dining room, ultra modern kitchen, 4 bedrooms, and 2 1/2 baths. House amenities include a 4 car garage and in-ground pool with bath house.

Dependencies include modern horse stable and renovated bank barn with a total of 19 box and foaling stalls, automatic fly control, automatic heated waters, and large tack room. Other barns include a large equipment building, a farm shop, and strategically located run-in barns.

The farm is almost entirely fenced with pastures and paddocks. This exceptional farm is meticulously maintained and reminds one of a Virginia Estate. \$1,345,000.

For additional information on this property and other fine PA farms and estates contact:
Perry Long at 717-396-5000
or 816-864-3025
877 Mush Duff Road
New Ringold, PA 17900

WIMPLE ASSOCIATES

ROOM FOR 200 HEAD with 104 large ties on 8 unit Boumatic pipeline. 20x70 and 20x90 silos. 2 Patz cleaners plus manure stacker. Very good 10 room home with pool. 475 acres with over 300 tillable. **WAS \$395,000...NOW \$295,000. MUST SELL.**

MAIN STREET HARDWARE STORE: Long-established country store with complete equipment, furnishings and inventory. Turn-key operation near Pennsylvania border. \$110,000.

ATTENTION HAY FARMERS: 238 acres with excellent land base and 180 acres tillable. New 50 stall hay and heifer barn. **MOST LIBERAL OWNER TERMS AROUND! \$155,000**

Mort Wimple Associates
Real Estate Sales - Management

ESTABLISHED 1953 U.S. 29975 20
HARRISBURG, PA 17112
FAX: (717) 678-9740



MALONE, FRANKLIN COUNTY, NEW YORK VEGETABLE/POTATO FARM OR DAIRY FARM
1200 Acres w/700 tillable acres, 500 wooded, 77'x177' pole barn w/ loading dock containing 45'x55' refrigeration cooler, repair shop, fertilizer storage w/4' concrete containment walls, tools, and equipment buildings, quonset building, dairy and calf barn w/attached 96 head free stall, 4 large forage silos, 3 steel grain silos
All tillable land in use, growing mostly spinach & cauliflower, and some field corn; 4 bedroom single family home with modern kitchen and in-ground pool; 2 bedroom mobile home. EXCELLENT MULTI-PURPOSE PROPERTY.

Ideal for various vegetables. Property can be subdivided. Ideal commercial campsite location bordering Trout River. Asking \$475,000.00, possible financing. VCR tape available.

For Details Call Century 21 Fibery Realty
9000 New York, 846-444-8888, or
Century 21 Fibery Realty, Inc.
For Service Call: 800-368-7708, All States