

**1a CONSTRUCTION EQUIPMENT**

16' car trailer, 4W brake, \$1,500 Call after 4pm, (609)965-6164

1976 JD 310 backhoe, \$9000 Ask for Ron 717-256-3482

1980 Cat 518 Cable Log Skidder, 23 1/2 rubber, runs good, asking \$19,000 717/768-8647

1980 JD 755 crawler loader, 2 5/8 GP bucket, ER-OPS, 40% U/C, 5552 hours, \$22,000 1981 Case 450B, GP bucket, ROPS, 45% U/C, lights, \$20,000 (800)334-7633 (717)766-7671

WANTED Backhoe & trailer, prefer Case No dealers please 215/766-861

WANT TO BUY all makes and models of construction equipment (301)694-6148, (301)371-9299 fax

Yale 15000lb Forklift, 900-20 Duals, 12' Mast, Gas Engine \$6800 (610)593-2407

Ingersol Air Compressor, 10hp, w/tank, \$1600 717/354-3105

Garage door, 8x8 metal, \$125 Dewalt radial arm saw, \$350 2 in-well water pumps Call Larry at (610)286-5441

Hyster Forklift, 4000lb, S40B, LP, solid tires, side shift, \$4800 717/354-3105

Ingersoll Air Compressor, 40hp w/motor, \$3500 717/354-3105

Ingersoll Rand Portable Compressor, 185 diesel, good condition, Koehring 205 crane & backhoe 215/699-3928

IR P-100 used air compressor, 100 CFM, White gas engine, tow type, runs but needs work, \$1800 1-800-334-7633

Lincoln Welder, 300 amp w/trailer and leads, \$1,300 Call after 4pm, (609)965-6164

DISMANTLING FOR PARTS Massey Ferguson 200 crawler/dozer w/6-way blade, good u/c, good engine

BALANDA EQUIPMENT P.O. Box 407 RT 29 Palm, PA 18070. 1-800-322-8030

Oliver Cetatrack model AG-6, wide gauge model with Anderson dozer attach, side mount mower, good condition, low engine hrs \$5,900 Roadscraper, pull type, 176" wheel base, \$950 LEE BROS. CRANBERRY FARM 609-726-9292 Days 609-726-1214 evenings

• 1986 455E JD 1-1/4 yd. loader 2900 hours.  
• 1988 and 1989 743 Bobcat loaders, 1300-4000 hours.  
• 1985, 86, and 88 843 Bobcat loaders, 1332-2400 hours.  
• 1985 9-ton Eager Beaver triaxel trailer.  
• Attachments for 743 and 843 30" tree spade, tiller, hydraulic auger, Rockhound forks, and hydraulic hammers.  
• 1987 Big John 90" treespade on MR 686S Mack only 15,000 miles on truck.  
• 1989, 855 John Deere loader w/60" belly grass mower w/rear grass catcher and hydraulic dump. (215) 943-4803

Michigan 75A rubber tire loader, diesel, 4 wheel drive Asking \$3500 717/987-3535

Prime Mover, 2000lb, electric 24V, walk behind, \$1250 717/354-3105.

Taylor Forklift, 12,000lb., gas, pneumatic tires, 6' fork, \$9500 717/354-3105.

Clark forklift, 3500 lbs., gas, Yale forklift, 2650 lbs., 3-stage propane; Case 1737 skidsteer, quick change bucket forks 215-343-6413

NEW WIRE ROPE. This never used cable is available from 1/2" to 7/8" sizes at low prices Quantities limited 410-335-0131

Oliver OC-12 crawler loader, \$4,150 AC HD6G crawler loader w/winch, \$7,500. Brush chipper, \$3,500 (717)286-5306

JD 401D loader backhoe 1983, \$10,000  
Case 480C loader backhoe, new tires and paint, \$10,000  
Case 580D loader backhoe w/full cab \$14,000  
(717) 868-6237

**In Stock At Binkley & Hurst Bros. Inc.**

**One New 20 Ton**

**Eager Beaver Trailer**  
**20 Halx**

**Model 20HALX: 20 Ton Air Brakes, Low Profile, X-Tra Wide**

- Capacity: 40,000 lbs. at 54 MPH
- Trailer Weight: 7,900 lbs.
- Overall Width: 102", Length: 31'6"
- Deck Width: 102", Length: 24', Height: 34"
- Tires: Eight 215/75R17.5 H Radial

**Unit In Stock Has Extra Length Deck With Total of 31'6"**

**Come On In And Towaway A Bargain Today!**

**BINKLEY & HURST BROS. INC.**

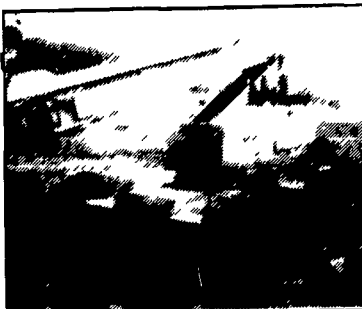
133 Rothsville Station Rd. Litzitz, PA 17543 (717) 626-4705 1-800-487-2978



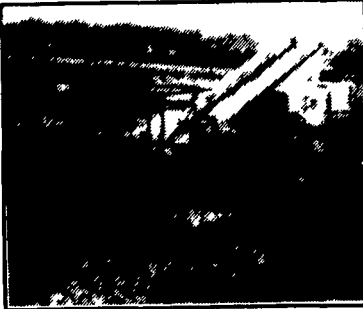
1989 Gehl 5625 new rubber, aux. hyd. \$10,500



1990 6625 new rubber, aux. hyd, 90"/35 cu. ft. bucket, good condition \$11,000



JLG 40' Man Lift, solid tires, working condition \$6,500



JLG 42C Man Lift, 8' basket w/rotator, good condition. \$10,500

Financing & Lease Purchase Available  
Coming In: (2) 4625 Gehl Skid Loaders



Weaver's Equipment Sales  
RD#3 Box 819 Milton Pa  
Phone: 717-242-7110 (No Sunday Calls)

Gallon Diesel Grader Hyd.....\$1,800  
'78 Int. Conv Tractor & 20-ton Lowboy  
Tractor has wetline for Dump Trailer.....  
Will separate  
Int TD 20 Power Shift Dozer.....  
Int TD 9 Loader, Needs Work.....  
Cat 977 Clutch with Shuttle.....  
Allis Chalmers HD11 Loader.....  
Link Belt Cable Crane LS78 with Orange  
Pull Grable, 371 Detroit Power.....

**610-944-9871**



Cat 966E 1988 9946045, nice, 6,900 hrs. \$89,000



Hyster 30' Platform Lift, 7 1/2 x 13 1/2 platform \$5,500



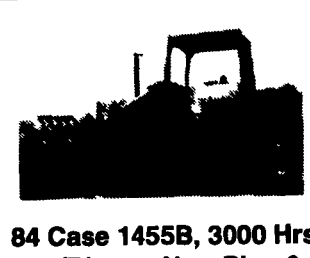
1985 JD 510B Turbo Tractor/Loader/Backhoe \$19,900



'87 JD 655B GP Bucket with Teeth U.C. 50% \$32,000



86 Kawasaki 85 ZII Wheel Loader \$45,000 or rent



84 Case 1455B, 3000 Hrs., w/Ripper, New Pins & Bushings & Sprockets \$24,900

**3 Pt. Hookup Snow Blowers Available**



'83 Cat 963 GP Bucket with Teeth, Cab \$42,000

Financing Or Lease Purchase Available

**AA Equipment**

1797 Robert Fulton Hwy., Quarryville, PA 17566  
717/529-2512  
No Sunday Calls

**G&H Service, Inc.**

Route 206 North, P.O. Drawer E  
Newton, NJ 07860 (201) 383-3370  
Outside NJ 1-800-545-1278  
Toll Free NJ (Parts) 1-800-372-9207  
JD FINANCING AVAILABLE TO QUALIFIED BUYERS  
FAX: 201-383-5756

**CRAWLER DOZERS**

1987 JD 750B w/ROPS, 2480 Hrs.....\$42,000  
1980 JD 450C, 6-way blade, rebuilt engine.....\$20,000  
1986 JD 450E, 6-way blade, 1600 hrs.....\$26,000  
1988 JD 450G 6-way, 215 hrs.....\$43,000

**WHEEL LOADER BACKHOES**

1987 JD 210C, ROPS, Low Hours.....\$26,000  
1988 JD 310C w/cab.....\$27,000  
1993 JD 310D, cab, 4x4, ext. dipper.....\$50,000  
1974 JD 410 w/cab.....As is \$9,000  
1986 JD 410C cab, 4x4.....\$32,000  
1986 JD 410C w/cab, ext. dipper.....\$31,000  
1967 JD 500, good condition.....\$8,500  
1985 JD 515B with cab & side shift Backhoe aux. Plumbing...\$19,500  
1985 MF20D 3pt. Hitch Backhoe, York rake, 988 hrs....\$13,000

**TRAILERS & TRUCKS**

1968 Mack R Tractor 237/5 Speed.....\$5,500  
Mighty Mover landscape Trailer, 2 axles, long bed.....\$1,200

**SAKAI TRAIL KING TRAMAC MUSTANG**



Want To Buy John Deere Equipment - Any Model

**WHEEL LOADERS**

(2) 1980 Case W20 2 yd.....\$25,000/ea.

**GRADER**

1988 JD 570B, municipal machine, 97 original hrs.....\$67,500

**CRAWLER LOADER**

1978 JD 555 w/9300, backhoe.....\$23,500  
1980 JD 555, ROPS, 4&1 bucket.....\$16,000  
1981 JD 555, ROPS, 4&1, B/H mounting, clean.....\$24,000

**HYDRAULIC EXCAVATORS**

1992 JD 70D w/blade, long stick.....\$52,000  
1989 JD 490D, 1600 Hrs.....\$53,000  
1987 JD 790, V.G. U/C, aux. plumbing.....\$57,000  
1986 JD 490, clean.....\$42,500  
1989 JD 690D 4200 hrs., v.g. cond.....\$72,000  
1993 Komatsu PC150LC-5, 156 hrs.....\$97,000

**AGRICULTURAL & MISCELLANEOUS**

Excel 260Y ~~SOLD~~ er engine.....\$2,800  
Excel 340 mower, diesel engine.....\$6,500  
Toyota skid steer loader buckets.....POR  
RM Demco Sprayer, like new, 3 pt. 21' Boom.....\$1,000  
JD 603 rotary Cutter.....\$700  
3 Yd. 444E Material bucket, new.....\$2,400  
Stanley MB 125 hammer, low hrs.....\$3,500

**ATTACHMENTS**

JD forks for 350 loader.....\$1000  
93A Backhoe.....\$3,500  
9300 Backhoes, Good Condition.....\$4,500