

1840 building in storage 22'x18'x1 1/2 story. Ready to be erected all material visible \$2700. York Co. 717-266-4490.

Cattle trailer 14'x7' treated wood floor \$400. MB1100 Mac tool box. \$2200. Like new. Lanc. Co. 717-664-4626.

Wheat certified from last year CR863 \$7 bushel. Cleaned, 4 row corn head for 815 or 503. \$800 Berks Co. 610-777-0052.

Used gravity bin wagon, field ready, new paint, asking \$400. Sch. County 345-3822. After 6 p.m.

600 gal E.L.S. liquid manure spreader \$450, also. Old hand cut fence rails. M.S. Lapp, Box 277, RD2 Myerstown, PA 17067.

Tractor cab I.H. Model. Presently on 706 tractor \$250 obo. Chipper/shredder 5 hp \$150 obo. 201-875-6615. Sussex County.

11/2 yr. old Nubian Billy Goat \$250 four milking goats. \$125 ea. John Smoker 147 North Ramona Road, Myerstown, Pa. Leb Co.

91 Plymouth sundance 83,000 miles. Auto power steering brakes. Pretty car Exc. condition \$3650. 717-865-4695.

2 row New Idea corn picker excellent condition 717-733-9585 Lanc. Co.

4 year old male UKC gun dog also pups. Lanc. Co. 717-284-4404.

AKC Pomeranian puppies, 2 cute males. Also stud service very cute male for more info. 717-354-6279. Daniel Stoltzfus. Lanc Co.

Manure Loader Bucket will fit JD 245 or 260. Quick attach, 6' wide. Like new Lanc. Co. 717-336-1179.

13 rolls snow fence approx. 25' per roll \$5 each.

Winco generator 30 amp 7000w with 16hp, lp gas engine, good condition. Price \$1200. 717-445-6602. Lanc. Co.

N.H. Model 320 Baler with Hydroformatic Bale Tensioning Ex. Condition Barn Kept No Kicker. 717-646-2163.

Reg. Charolais Bull Polled 6 yr .60 lb. Charolais Bull Polled 700 lb. .80 lb. 410-848-4829. Carroll Co., Md.

14' metal dump bed with metal sides Al-Shape has single cylinder on international truck not running 1800.00 or best offer Adams County 717-642-5285.

Antique Forquah Corn Planter with all plates Good condition \$130.00. Northampton Co. Phone (610) 261-1015.

NH445 skid-loader Dentz diesel Hydro. 5 ft. bucket \$5995. field cult. 25 vibra shank 13 ft. 6 in. \$350. N.H.258 hayrake like new \$1795. 1530 case skid-steer \$3995. 717-354-0266.

Lambs 7 months old three ewes four rams \$75 each 609-259-1102.

6' plow with bumper frame & variable angle off old military dodge after 7p.m. Mercer Co. \$90. 609-799-7008.

17 1/2' used 3 axle trailer, 24,000# GVW, pintle hitch, asking \$1200. Large 12' V-type snowplow. 717-345-4882. Schyl. Co.

Old one row New Idea corn picker needs some work. \$20 Berks County right close to Lancaster County (610) 286-2139.

Chevrolet Caprice Estate 1981 Station wagon runs good uses no oil 350 engine four Barrel Carburetor \$495.00 Chester 610-932-2453.

3 Angus Cross feeder steers 75¢ appr. 700 lbs., International Veber Shank field cultivator 14' can be made narrow \$975.00 Berks 717-933-4721

Econolite 1988 20' Aluminum Gooseneck Stock Trailer with 4' changing room full gate half gate \$7,000.00 908-782-3179. Hunterdon, N J

1937 Allis Chalmers B Tractor. Original paint, hand crank. Plow, cultivators, center-mount 3-row marker included. In the same family for 56 years. \$1000. Lanc. Co. (717) 284-4911.

Registered Polled Hereford bred heifers. Were shown. All vaccinations. Good breeding. Priced to sell. (717) 866-4185.

1989 Wells cargo MGS closed trailer, like new, wheel buddies, 4x4x6 long, \$800. 717-789-4748.

Snow plow Ford 705 w/ push frame you provide hyd. lines & piston fits 2000-3000-4000 \$495. Bucks Co. 215-968-2649.

NH #33 flail chopper \$250, 1977 Dodge club cab 4x4, V8, auto, \$5,200, 8' Leroy double cultipacker \$175, MH sickle. Montg. Co. 610-631-1890.

3 pt. hitch for AC CA tractor new cond., \$500 new sell for \$350. Balt Co. 410-239-7495.

Wood burning hot water boiler for house or garage \$125. Col. Co. 717-387-0555 after 5 p.m.

JD 500 round baler all new belts, good cond., \$3,200 Union Co. 717-966-4264.

86 Chevy Suburban 2 wheel drive 89,000 miles, excel cond., 6.2 diesel at O.D. Silverado \$8,000 Dau Co 717-362-9850 eves

Linde mig welder 3 PH 220V must sell \$275, 64 Pontiac convertible perfect for restore \$850 Adams Co. 717-334-4802

3 yr old AKC Keeshond female dog \$50 Leb. Co. 717-272-9531

86 YZ80 rebuilt engine new tires new plastic hardly ridden runs great \$900 best offers highly considered. 717-273-3823

Backhoe 3 pth fit any farm tractor 3 pt. 16" bucket, loader & bucket Bucks Co 215-346-6052 after 5.

1994 new 8' white Chevy truck bed- complete \$1200 or best offer. Schuyl. Co. 717-386-3515.

Steel I-beams from a-frame car wash, great for building 2 story barn or cabin \$1500 takes all. Leb. Co. 717-949-3113.

Farmall Super M tires excel., live hyd. good cond., also 2- (12-4-38) tr. tires good tread no brakes. Franklin Co. 717-264-5137.

Parting out 1971 Int. 1800A truck, factory rebuilt 392 V8 engine, 5 spd. transmission, air brakes, low miles, all good glass. Salem Co. N.J. 609-299-0685.

MH Mustang needs restored running cond. includes 2 btm. plow, cults., hyds. & 3 pt. hookup \$1250. 717-724-1502 eves.

4 dual rear split rims 16" for Ford 8 lug \$125. Lehigh Co. 610-285-4309 after 5 PM.

1977 Chevy work van 1 owner, V-8, standard, 73,000 miles, will trade for small tractor or older convertible. Northampton Co. 610-837-6454.

NI 323 corn picker, NH 33 flail chopper. Bucks Co 610-847-5606.

Bay Morgan filly \$1200, Appaloosa filly palomino white blanket built \$2,000, donkeys gray w/cross 4 mc. old \$500. York Co. 717-229-2218

Sukup strator 2 augers for 27' bin w/updated drive kit, Int. 5100 soybean special 18-7 grain drill. York Co 717-229-2352.

Injectors on tool bar, came off Van Dale liq manure spreader, hyd. cyl. & hoses, \$500 OBO. Lanc. Co. 717-665-6482

1986 Mitsubishi PU truck 2WD 71,000 mi., asking \$1500 or best offer. Berks Co. 610-777-2931 call anytime.

NI 2RW corn picker, 12 roll husking bed, good shape. Franklin Co 717-369-3590.

1971 Plymouth Fury III, bought new by 75 yr. old man, 37,000 orig. miles, garage kept, no rust, new tires, one of a kind classic, must see, \$4,000. 717-789-4748.

Fogging machine aero model A \$85, cast iron plow parts to build 2 walking plows RH genuine Wiard, \$50 for both handles & grandle. Lehigh Co. 717-756-6626.

770 NH chopper grass head & 2 row corn head \$500. Berks Co. 610-367-5340 or 610-326-1385.

Bee equipment & supplies, everything goes, all or part, large inventory, prefer selling all border Leister ram. Berks Co. 610-856-7409.

7 1/2' snowplow fits NF JD tractors A, B, 50, 60, 520, 630 etc., \$500, 38" tractor tire chains \$140. Berks Co. 610-367-9879.

MH 410 quick tach throat IH mounted corn snapper fits H or M make offer. Berks Co. 610-683-3238.

Int 700 automatic reset plow 5x16, \$1,500 Fred Co. Md 410-775-7394

2 rear tractor tires 15 5x38 plus tubes, 25% tread, \$50 Perry Co 717-582-8346

Losch boiler furnace good cond., asking \$350 or best offer, clay pots 717-865-2083

2 234 corn pickers 16.9x26 tire, IH 3 pt 16' harrow, 2 ME corn picker. 610-562-7742.

Trained very gentle tame 3 1/2 yr. & 5 mo. full togg breeding bucks good price Berks Co. 610-756-4129.

48 Plymouth 2 dr. special deluxe some rust, restorable \$700 OBO. 410-592-5360.

Fert. spreader Tyler 2 spinners tandem wheels new paint stainless steel drag very good cond 410-343-0595.

Beautiful wood stove Morse 1125 heats whole house burns all night low ash \$350. Bucks Co. 215-536-6076 pair emu chicks.

NI #10 corn picker very good cond. Schuyl. Co. 717-467-2039.

Approx. 800 used slate 8"x16" 65¢ piece or 60¢ piece takes all delivery possible. 215-767-4735.

Combine TR70 6 row, planter JD 7000, truck IH 1800, 18' steel dump, grain auger 4"-22". Harford Co. 410-692-5048.

Weaver feedcart 24 bu. hyd. like new 19 hrs., \$3700, Sealstore silo 15x40, distributor & unloader make offer. Clinton Co. 717-726-6229.

Losch hot water stoker boiler w/coil & circulator, also approx. 1 1/2 T. coal. Lehigh Co. 610-298-2304.

1988 Loshora motor home by Winnebago, 8000 miles, good as new, \$15,000. York Co. 717-938-6312.

# YOUR PROFITABILITY IS THE MARK

## SCHNUPP'S GRAIN ROASTING IS RIGHT ON TARGET!



More than 20 years of experience research and development in our manufacturing plant, and at farming operations around the world.

- The latest technology for safe, clean and easy roasting
- Uniform treatment of your grain.
- Convenient steeping process
- Accurate, consistent bypass levels

### THE BEST NEVER RESTS!

Research and development is still the best way to know the truth about grain roasting. That's why we base our facts on experiences with real animals who proved to be more profitable when they were fed roasted grain. So let's keep going with the best - the facts.

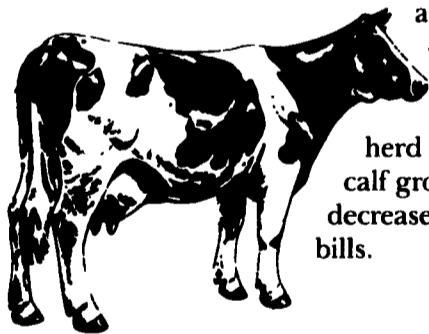
#### FACT

When your soybeans, corn or other grains pass through the open flame in our roaster, they are given a flavor that even the most discriminating animals will enjoy.



#### FACT

Dairy farmers are reporting increased butterfat and milk production with less feed; improved herd health; faster calf growth; and decreased veterinary bills.



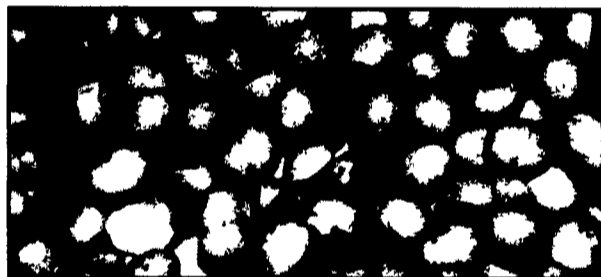
#### FACT

Hog farmers are reporting more healthier piglets per sow; faster weight gain; better yield and grade; and a reduction of health problems and feed refusal.



#### FACT

The oil and lecithin of your whole beans are retained to give you more total digestible nutrients than soybean meal.



#### FACT

Toxic enzymes are removed; molds are destroyed; T.D.N. is increased; and starches are turned into sugar for energy.

#### FACT

When we roast your grain on your farm, you control the shrinkage. We give back to you what you want - all of it.



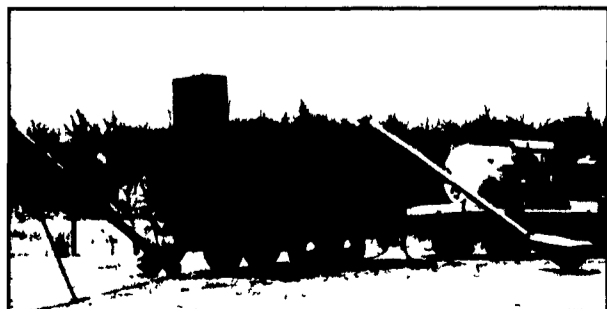
#### FACT

We can store your roasted grain, and then have it ground, rolled, flaked or crimped to meet your feed ration needs.



When you want the facts about grain roasting, call . . .

**Schnupp's Grain Roasting, Inc.**  
RD #6, Box 840, Lebanon, PA 17042  
717-865-6611 • 1-800-452-4004



Roast-a-Matic grain roasters are manufactured by Schnupp's Grain Roasting, Inc., Lebanon, Pennsylvania