

**MAIL BOX MARKET FOR SALE**

Sukup grain cleaner model 48 exc. cond., 16' Brillion transport harrow. Monroe Co. 717-629-1820.

IH 1066 diesel, black stripe, w/cab, rebuilt hyd's., \$10,000, IH 2-bar 13' chisel plow \$1000, AC 18' field cult., \$900. Kent Co. Md. 410-778-2577.

3 pt. equipment 1 row cult., \$75, 7' Rhino disc, \$425, 6' mower (rotary), \$400, 6' flail mower, \$500. Dau. Co. 717-921-2426.

JD M w/snowblade, garden plow, nice, swap for 35-50 HP JD or 420, 430 or 720, 730 gas. Tioga Co. 717-324-2821.

MF 510D combine w/4 row narrow head runs good a few parts missing \$2000. Union Co. 717-922-1135 no Sunday calls.

9N Ford good cond., 12 volt system rear blade chains price \$2600. Bedford Co. 814-623-0505.

Perry Co. chicken operation sell out metal coops water's numerous chicken items stored inside building excel. cond. 717-589-3037.

Loader off low hr. 800 Ford tractor sell \$500 or trade. Ocean Co. N.J. 609-758-7295.

36" snowblower attachment for B-10 or B-12 AC riding tractor, \$175. York Co. 717-246-0971 eves. 5 PM

12 1/2 KW generator low hrs., new battery \$600. Lanc. Co. 717-872-7081 after 6 PM.

AKC Samoyed pups, also adult male or trade for boxer male & dog kennels made. 1867 Lanc. Pike, Peach Bottom, Pa. 17563.

2 reg., 2 snows 8.75x16.5 8 lug wheels, 2 7.50x16 tires on 8 lug wheels. Lanc. Co. 717-394-8725.

Char Lyn hyd. motors last yrs., hay some alfalfa some mixed 45 lb. bales \$1.75 ea. York Co. 717-927-6967.

Wheel horse 10 automatic w/36" mower & 36" snow blower. So. York Co. 717-244-4655.

1953 JD no. 7 grass mower in working cond., \$200. Lanc. Co. 717-872-5784.

Int. 56-4R planter like new, \$1375, 3rd alf., wheat straw, horse quality timothy, also some w/rain. York Co. 717-292-6441 eves.

1948 Case vac parts rear axle, transmission & torque tube assembly, \$125. Lanc. Co. 717-786-2042 eves.

Reg. paint mare green broke, also POA mare 13.2 hands. Mifflin Co. 717-667-6944.

Stock trailer, Moritz 12' divider gate, needs paint otherwise good cond. Franklin Co. 717-349-2417.

PTO auger 10" 61' Zimmerman elect. lift. North'd. Co. 717-473-9417.

JD 2-16" rollover plow 9' stake truck bed. Mifflin Co. 717-899-6469.

Jotul wood stove, model 118, green enamel like new, \$300. Dau. Co. 717-599-5769.

16' alum. harvest handler elevator for use in loft of corn crib. Franklin Co. 717-749-7234

JD 300 cornpicker field ready 540 or 1000 RPM PTO \$2200. Lanc. Co. 717-656-9660 no Sunday calls.

New 1993 dump trailer 9600 GVW Surge brakes drop sides & ramps. Cumb. Co. 717-766-7042.

Elgin gold watch as is, \$50, silver dollars 1927, 1927, \$65 ea. York Co. 717-741-2215.

AKC Dalmation pups, variety of markings, health charts, born 9-5, Lanc. Co., asking \$300 717-529-3172.

Angus show steer prospect halter broke ready to go \$725. Lanc. Co. 717-548-3282

B7100 Kubota 4x4 diesel tractor w/40" Baldwin cutter \$4495. Lanc. Co. 717-733-9484.

Used horse collars all kinds & sizes. Lanc. Co. Christ E. Fisher, 1975A Mine Rd., Paradise, Pa. 17562.

Australian blue heeler pups born Aug. 26th. Lanc. Co. 717-354-0291.

Fairbanks platform scale, calibrated, painted, w/ weights, \$250, Cub snow blade \$475, complete. Punch presses 3-5 ton, \$225 w/motors & stands. Lanc. Co. 717-687-6553.

1978 Ford L8000, 36000 & trailer, MF 300 combine, NH grinder-mixer 350 all good cond., \$1,150 extra sheller. Jun. Co. 717-694-3853 or 469-9308.

NI corn picker 324w w/314 sheller field ready, real good cond., \$1,150 extra sheller. Jun. Co. 717-694-3853 or 469-9308.

Buyer for 500 Douglas Fir Christmas trees 6' to 8'. Snyder Co. 717-539-8113.

Wholesale scotch pine Christmas trees bailed 4', 8', \$5. Fulton Co. 717-485-4179.

Large hot water wood or coal furnace \$950. Lanc. Co. 717-738-4870.

15-25 Winpower PTO generator, \$1100, Jamesway 16' silage conveyor, \$300, NH 975 combine \$2000, Int. 1 1/4' disc. Centre Co. 814-349-8010.

Parts for older Farmall tractors, Farmall Cub tractor w/5' Woods mower, front loaders for Int. & JD. North'd. Co. 717-524-2473.

2 post hole diggers, 1 corner 12" auger works well, \$350, 1 TSC \$100. Berks Co. 717-933-5307 leave message.

Wood planer 12" \$575, Mortise & Tennon machine \$550, chain mortiser \$375, Delta Unisaw \$750, Delta Uniplane \$325. 717-339-5777.

11 Angus simmental hereford calves 400 lbs. 7 steers, weaned, 4 holstein heifers 5 & 700 lbs. J.J.E. 170 Truce Rd., New Providence, Pa. 17560

1978 Ford F-350 rollback, 17' steel bed, 351, 4 spd., 45,000 orig. miles, new front tires & b. brakes, \$8,500. Montg. Co. 610-631-1890.

NI 727 husking bed used in 94 \$300. Leb. Co. 610-589-4641, no Sunday calls.

1982 Mack MS 300 210 Hp 10 spd. w/26' Jerr-Dan rollback 9,500 or 4,000 without bed. Leb. Co. 717-865-3923.

1993 Dodge D-250 3/4 ton pickup, extended cab, 8' bed, 318 V-8, PS, PL, PW, PM, AM-CM Cass., 14,000 miles, ex. cond., \$15,500. Chester Co. 610-469-9119.

Power King 2418, plow, disc, cult., mower deck, snow blade, homemade cab, 1 owner. Leb. Co. 717-866-4802.

Calf kennels. Lanc. Co. Enos B. Stoltzfus, 119 Lower Valley Rd., or call Charlie Myer, 717-786-1243 in eve.

Purebred polled simmental cow calf pairs, heifers, bulls, 1 cow half angus half simmental w/calf. Bedford Co. 814-733-4705.

Miniature donkey spotted jack 4 mths. old lots of color \$750. Broadway, Va. Rockingham Co. 703-896-7442, 703-896-7442.

JD 730 diesel new paint \$2800, loader fits Farmall H \$50, Trojan wheel loader \$3500, WC-AC 1937, \$450. 717-684-5352.

Detroit 471W 375 CFM-trailer compressor, good shape, 1981 GMC 6000 truck, Lincoln SA200 welder rebuilt. 717-337-0362.

1981 Ford Mustang 4 cyl. 4 spd. t-tops runs great, \$700, 1972 Yamaha dirt bike 250cc \$100. Berks Co. 610-926-6134.

8 feeder heifers, black white face, 500-600 lb. average, 70¢ per lb. 215-670-2439.

AC D-17 gas good cond., \$3000, AC WD gas good cond., \$1500. Centre Co. 814-355-4298

New pedal tractor narrow front standard size American Farmer Ford, Cub Cadet \$149.95. Lanc. Co. 717-872-5144.

Jacobson turfcat-2 engine & accessories, teledyne R08, 23 HP, needs rings. St. Marys Co. Md. 301-475-2502 eves.

Deer rifle 30-30 pump action like new \$150. Wanted MF #57 rollover plow, also MF hyd. reset plow. Lanc. Co. 717-355-9620.

Flatbed wagon w/hyd. lift \$500, Antique hoosier kitchen cupboard \$425, wooden window sashes diff. sizes \$2 ea Lanc. Co. 717-786-9070.

JD 3 pt. #30 2-12" btm plow like new girls bike 20". Lanc. Co. 717-367-3494 eve.

Girton #D2 bulk tank 600 gal., \$400, Surge automatic tank washer, same as Mueller \$150, DeLaval 76 vacuum pump. Lanc. Co. 717-355-9620.

Flooring T&G, kiln dried ash, 5-7" wide, new, 2,000 sq. ft avail 1/4", 1/2" thick 6-16 ft. long. Del. Co. 610-565-6038

Blodgett elect. convection oven model EF-111, \$800, matching gem 42 cubic ft freezer & refrigerator, best offer. Salem Co. 609-694-3448 eves.

PTO Papec hammermill w/ bagger on wheels w/extra screens used very little, extra good cond., \$1000. Sch. Co. 717-345-4109 eves.

Woodchuck wood chipper 16" 300 Ford engine exc., \$4000, 1975 LN900 Ford dump 472 V8, \$5,800. Bedford Co. 814-928-4009.

3 older outbuildings 12x20, 10x10, 12x12 good for raising ducks, chicks or tool storage. Berks Co. 610-488-6384.

Franklin wood stove, \$25 OBO. Berks Co. 717-445-6653

Powerking 1617, all gear drive, snowplow & 3 pt. hitch, 1986 model, like new, sicklebar avail. Towanda, Pa. 717-265-6465.

Polled herefords: Reg. breeding stock, bred cows, weaned heifer calves, vacc., delivery avail. Meadowview Farm, Bradford Co. Visitors welcome. 717-869-2130

**RECON ENGINES**

DIESEL PERFORMANCE SPECIALISTS (717) 354-4801

Specializing In Used Rebuilt And Exchange 3208 Caterpillar Engines



- SALES
- SERVICE
- PARTS

**DIESEL POWER SUPPLY**

DIESEL ENGINES - POWER UNITS

415 PETERS RD. GORDONVILLE, PA 17529

Misc. New-Used And Trade-In Diesel Engines



SPECIALIZING IN B&C SERIES

**BLACK ROCK'S Black Walnut Cracker**



Hand-Built in Lancaster County, PA

Sturdy steel construction, maple handle and base. Weights 8.5 lbs, 3 1/2"W x 6 1/2"H x 24"L. Cracks the toughest nuts & is adjustable for nuts 1/2" to 2".

Send check for \$29.95 (Postage Paid) directly to the manufacturer: Black Rock Repair, 858 Pumping Station Road, Kirkwood, PA 17536. Allow 2 to 3 weeks for UPS delivery.

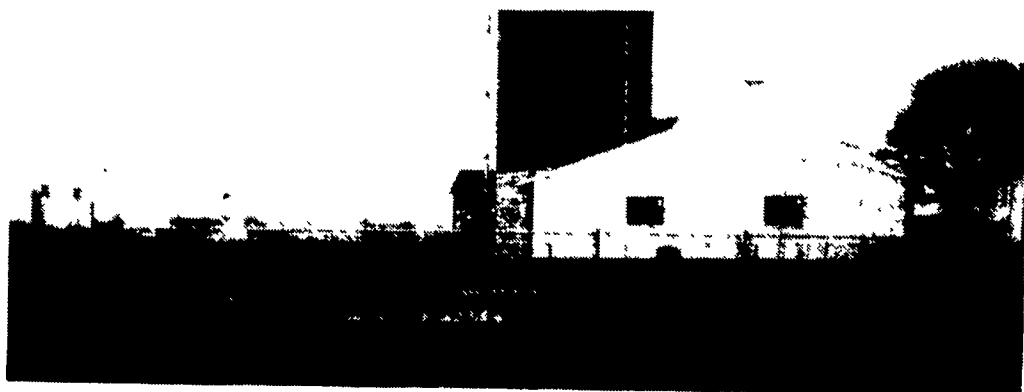
**PRECISE CONCRETE WALLS, INC.**

Agriculture - Residential - Commercial

- Buildings • Basement • Floors
- Retaining Walls • Footer
- SCS Approved Manure Storage Pits
- All Types Of Flat Work

For All Your Concrete Walls And Construction Needs

Specializing In Manure Storage Round or Rectangular In Ground or Above Ground



65' Diameter SCS Approved Circular Manure Storage

Invest In Concrete, Quality Work That Will Last A Lifetime

CALL FOR FREE ESTIMATES AND SEE HOW AFFORDABLE CONCRETE WALLS CAN BE

CONTACT ROY SENSENIG 717-355-0726

**PRECISE CONCRETE WALLS, INC.**

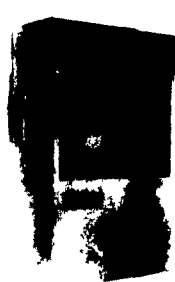
601 Overly Grove Road, New Holland, PA 17557

**GET FRESH WITH US!**

- System includes Air Conditioner Package Fan Air Balancers and Automatic Intake Controller

- Energy efficient operation

- Optional corrosion free stainless steel housing and hardware



Farm Air Conditioner



Package Fan

- Easy operation and maintenance

**VENT-O-MATIC**

TUSCARORA ELECTRIC MANUFACTURING CO., INC.

Tunkhannock, PA 18657 Call 717-836-2101 Fax: 717-836-2102

Call for special pricing



**"BELT BUSTERS"**

Save-on Flat Belts for Your Farm Machinery! We Will Make the Belt You Need and Ship Same Day by U.P.S. - We're Fast!

- Bale Thrower Belts
- Round Baler
- Harvesting Machines Like Bean, Cherry, Grape, Etc.
- Forage Box Belts for Gehl, Grove Kasten, New Idea, Etc.

Quality Belts at Farmer Prices

SORRY, NO V-BELTS

**Agricultural Belt Service**

10632 Rt. 75 Eden, New York 14057 PHONE 716-337-BELT

Save This Ad For Your Winter Belt Needs!

Save This Ad For Your Winter Belt Needs!