

# AMINOTEK®

## HERE'S WHAT THEY'RE SAYING



### Bedford Dairy Herd Increases 14 lbs. of Milk on AminoTek... Through Summer Heat Wave!!!

The Grubb's were excited when their herd responded to AminoTek with a 17 lb. milk increase this spring. But when their herd responded with another 14 lb. increase when they started to feed an AminoTek based top dress...and during the hottest June on record, they couldn't believe it.

On their July 6 DHIA test, they had 21 of their 38 cows milking over 70 lbs.. Six were over 110 lbs., three over 120 lbs. and one was over 130 lbs..

Ray Grubb and his herdsman, Wendell Guyer, say that "The Master Mix AminoTek feed program has given us a great economical answer to some problems we were having. We have seen a terrific response in milk production, along with improved breeding and overall herd health.

We also appreciate the thorough service we get from Gene Barefoot, our Master Mix District Sales Manager for Bedford and Blair Counties. He works very close with us and we're really pleased."

Mr. and Mrs. Ray Grubb  
and Herdsman, Wendell Guyer  
New Enterprise, Pennsylvania

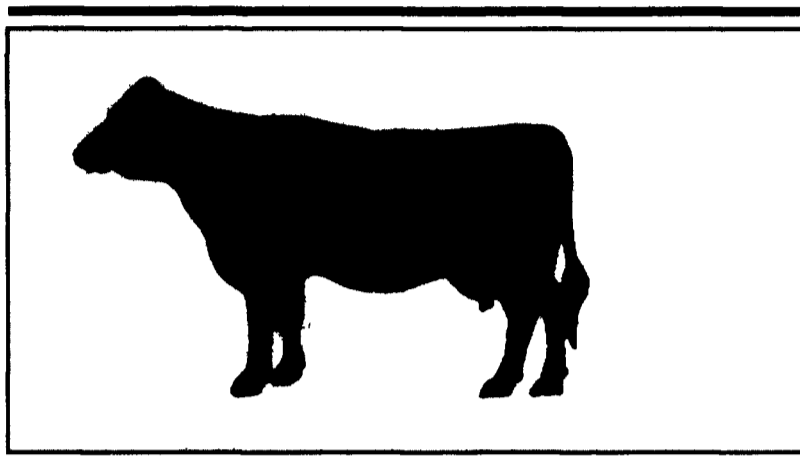
Date	Past Program	Master Mix	
	2/3/94	5/6/94	7/6/94
No. of Lactating Cows	40	40	38
Production/Cow/Day	48	65	79
DIM	132	134	136
% Butterfat	4.1	4.2	3.7
Pounds Butterfat	598	820	1070

#### TMR Mix

- Alfalfa Haylage
- Corn Silage
- Shelled Cracked Corn
- Bovine III Mineral
- AminoTek TMR Base Concentrate

#### Top Dress

- AminoTek 36 H.F.
- Megalac
- Shelled Corn



### AminoTek Helps Rolling Herd Average Increase 5,000 Pounds In 3 Years

"After 3 years on AminoTek, our herd average has gone from 16,000 lbs. milk to 18,000 lbs. milk to over 21,000 lbs. milk. Our tank average has stayed over 80 lbs.. for over 3 months with no BST! This spring we had one cow peak at 149 lbs.. milk!

I'm well pleased with the Dry Cow Program and the PreLact Pellets. Our herd health and reproduction have gotten alot better since switching from a previous mineral program."

L.S. Nolt  
East Earl, Pennsylvania

Date	Past Program	Master Mix
	4/91	5/94
No. of Lactating Cows	24	34
DIM	185	160
Production/Cow/Day	55	80
Rolling Herd Average	16,000	21,300
% Butterfat	3.6	3.6
% Protein	Unknown	3.2

#### Milk Ration Program

AminoTek 21% Mixer Pellets  
with flaked corn

Top Dress  
AminoTek 20% Pellets  
with flaked soy beans

#### Forage Program

Corn Silage  
Alfalfa Hay

For information on how you can get  
AminoTek into your herd, call our  
Master Mix sales office in Camp Hill,  
at 1-800-477-7692



**MIFFLINBURG FARMERS EXCHANGE**  
Mifflinburg, PA 17844  
(717) 966-1001

**ANDOVER MILL**  
Millington, MD 21651  
(800) 245-2305

**THURMONT COOPERATIVE FARMERS EXCHANGE**  
Thurmont, MD 21788  
(301) 271-7321

**SENSINIG FEED MILL**  
New Holland, PA 17557  
(717) 354-4756

**SNIDER'S ELEVATOR**  
Lemasters, PA 17231  
(717) 328-2107

**ROSS H. ROHRER & SONS, INC.**  
Quarryville, PA 17566  
(717) 786-3372

**FARMERS COOPERATIVE ASSN. INC.**  
Frederick, MD 21701  
(301) 663-3113

**BIG VALLEY FEED & GRAIN**  
Belleville, PA 17004  
(717) 935-2163

**HOKE MILLS, INC.**  
York, PA 17404  
(717) 843-8889  
Abbotstown, PA 17301  
(717) 259-0609

**MAUGANSVILLE FEED SERVICE**  
Maugansville, MD 21767  
(301) 791-5288