

Grantsville Livestock

Grantsville, Maryland
Report Supplied by Auction
Sat., October 8, 1994

STOCK BULLS AND STEERS 200-500 LBS. 55.00-82.00.
STOCK HEIFERS: 50.00-72.00.
SLAUGHTER STEERS GOOD TO CHOICE 58.00-64.50; MEDIUM TO GOOD 54.50-58.00.
HOLSTEIN STEERS GOOD 46.00-54.00; LIGHT 45.00-54.00.
SLAUGHTER HEIFERS GOOD TO CHOICE 55.00-61.00; MEDIUM TO GOOD 49.00-54.50.
BULLS HEAVY 45.00-56.50, LIGHT 44.00-54.00.
COWS FEW HIGH DRESSING UP TO 48.00, UTILITY HOLSTEIN 40.00-44.50, CANNERS 34.00-40.00, CULLS 34.00 AND DOWN.
VEALS GOOD TO CHOICE 70.00-85.00, MEDIUM TO GOOD 55.00-68.00.
BOB CALVES: 40.00 AND DOWN.
HOLSTEIN BULL CALVES RETURN TO FARM 90-120 LBS. 60.00-106.00.
HOLSTEIN HEIFER CALVES RETURN TO FARM 100-120 LBS., NONE AVAILABLE.
BEEF CROSS CALVES RETURN TO FARM UP TO 80.00.
HOGS TOP QUALITY 32.00-37.00; HEAVY 30.00-35.00, LIGHT 28.00-33.00, FEEDER PIGS BY THE HEAD 10.00-25.00.
SOWS 20.00-30.00.
MALE HOGS 20.00-25.00.
LAMBS 60.00-70.00; CULLS 60.00 AND DOWN.
SHEEP 20.00-35.00.

Lebanon Valley Livestock

Fredericksburg, PA
Tuesday, October 11, 1994
Report supplied by Auction

STEERS: 28. LOW CHOICE COLORED STEERS 1165-1180 LBS. 63.00-64.50; SELECTS 1160-1190 LBS. 57.75-58.50; STANDARDS 1400-1475 LBS. 56.75-58.00; HOLSTEINS, CHOICE 1155-1435 LBS. 56.50-59.25; SELECTS 1325-1465 LBS. 53.00-55.00.
HEIFERS: 15 HEAD. CHOICE 1110-1245 LBS. 65.25-66.75; SELECTS

1110-1190 LBS. 60.50-62.50; STANDARD 980-1020 LBS. 56.25-59.00.
COWS: 105 HEAD. BREAKING UTILITY AND COMMERCIAL 43.00-45.50; CUTTER AND BONING UTILITY 40.00-43.00; CANNER AND LOW CUTTER 37.25-40.50; SHELLS 30.00 DOWN.
BULLS: 7 HEAD. YG#1 1495-1745 LBS. 58.50-59.50; YG#2 1255-1600 LBS. 48.50-53.75.
FEEDER STEERS: 9 HEAD. 535-850 LBS. 42.50-65.00.
CALVES: 133 HEAD. CHOICE 85-100 LBS. 45.00-52.50; GOOD 70-90 LBS. 37.00-48.00; STANDARD AND GOOD 70-130 LBS. 30.00-38.00.
FARM CALVES: #1 HOLSTEIN BULL CALVES 95-130 LBS. 120.00-143.00; #2 BULL CALVES 95-110 LBS. 90.00-120.00; #1 HEIFER CALVES 90-110 LBS. 180.00-205.00; #2 85-95 LBS. 155.00-175.00; BEEF X CALVES 100-115 LBS. 115.00-127.00.
SOWS: 23 HEAD. US#1&3 485-625 LBS. 25.35-28.75; #2&3 360-440 LBS. 23.00-25.25.
HOGS: 80 HEAD. #1&2 220-275 LBS. 31.00-32.50; #2&3 280-312 LBS. 30.00-31.00.
BOARS: 7 HEAD. 480-775 LBS. 21.25-21.75; 360-450 LBS. 20.50-21.50.
LAMBS: 80-110 LBS. 61.00-67.00; YEARLINGS 125 LBS. AT 40.00.

Special Sale Mules, Work and Driving Horses

New Holland Sales Stables
New Holland, PA
Friday, October 7, 1994
Report Supplied by Auction

148 HEAD.
DRIVING HORSES, ALL SINGLES, KENTUCKY, 975.00-1800.00; OHIO, 975.00-2900.00; PENNSYLVANIA, 675.00-1850.00 AND 625.00-975.00; NEW YORK, 825.00-2000.00; NEW JERSEY, 750.00-2000.00; OHIO, 775.00-2350.00; LOCAL DRIVING, 550.00-1075.00.
WORK HORSES, SINGLES, 785.00-1125.00; MULES, SINGLES, 625.00-1100.00.
A FEW PONIES FROM 310.00-675.00.

North Jersey Livestock

Hackettstown, NJ
Report Supplied by Auction
Tuesday, October 11, 1994
Report supplied by auction

CALVES 21-2.07% .
COWS 25-43% .
EASY COWS 10-38.
HEIFERS 17-75.
BULLS 41-65.
STEERS 30-63.
HOGS 15-34.
ROASTING PIGS EACH 18.00.
BOARS 15-17% .
SOWS 17-21.
SHEEP 13-57.
LAMBS EACH 4.00-68.00.
LAMBS PER LB. 32-85.
GOATS EACH 38.00-127.50.
KIDS EACH 11.00-73.00.
TOTAL 1012.

Belknap Livestock

Dayton, Pa.
Wednesday, Sept. 12, 1992
Report Supplied by Auction

STEERS CH. HOL. 58.00-61.00, GD. 53.00-58.00.
HEIFERS CH. 58.00-60.00, GD. 53.00-58.00.
COWS UTIL. & COMM. 39.00-44.25, CAN & LO CUTTER 32.00-39.00, SHELLS DOWN TO 25.00.
BULLS GD. 47.00-55.00, MD. 40.00-47.00.
FEEDER CATTLE: STEERS 65.00-70.00, BULLS 62.00-68.00, HEIFERS 55.00-65.00.
CALVES: HOL. BULL NO. 1'S 130.00-160.00, NO. 2'S 100.00-130.00. HOL. HEF. NO. 1'S 175.00-210.00, NO. 2'S 140.00-175.00.
HOGS NO. 1'S 31.50-33.75, NO. 2'S 29.00-31.50.
LAMBS GD. 60.00-63.00, MD. 58.00-60.00.
GOATS: UP TO 58.00.
LIVESTOCK SALE EVERY WED. 6:30.

Indiana Livestock

Homer City, PA
Thursday, October 13, 1994
Report supplied by Auction
BEEF: HEIFERS GOOD 66.50,

Estimated Daily Livestock Slaughter

Under Federal Inspection

October 12, 1994

	CATTLE	CALVES	HOGS	SHEEP
WEDNESDAY (EST)	124,000	6,000	352,000	16,000
WEEK AGO (EST)	125,000	5,000	355,000	18,000
YEAR AGO (EST)	125,000	5,000	356,000	20,000
WEEK TO DATE (EST)	377,000	15,000	1,041,000	49,000
SAME PD LT WK (EST)	379,000	15,000	1,052,000	55,000
SAME PD LT YR (ACT)	371,000	10,000	1,043,000	57,000
PREVIOUS DAY ESTIMATED TUESDAY STEER AND HEIFER 102,000, COW AND BULL 25,000.				

MEDIUM 63.00-66.00, COMMON 58.00-62.50. STEERS: GOOD 69.00, MEDIUM 64.00-68.00, COMMON 60.00-63.75. COWS: GOOD 48.00, MEDIUM 40.00-45.50, COMMON 32.00-38.50.
BULLS: BUTCHER 50.00 BOLOGNA 45.00-48.75
FEEDERS: 65.00-67.00, MEDIUM 50.00-58.00, COMMON 40.00-47.50.
CALVES: 85-115 LB. (BULLS) 110.00-140.00, 85-115 LBS. (HFRS) 155.00, 80LB. UNDER 60.00 DOWN; 120 LBS. OVER 70.00-85.00.
LAMBS: GOOD 60.00-65.00; MEDIUM 58.00-61.50; COMMON SHEEP 18.00-27.50.
HOGS: NO. 1 200-240 LBS. 36.50; 245 LBS. UP 33.00-35.50.
SOWS: 30.00-32.00.
BOARS: 17.00.

Jersey Shore Livestock Market, Inc.

Auction every Thursday
at 4:00 p.m.

Jersey Shore, Pa.

Report supplied by Auction
Thursday, October 13

RETURN TO FARM CALF 100.00-214.00.
GOOD VEAL: 60.00-99.00.
COMMON VEAL: 10.00-59.00.
SELECT STEERS: 60.00-65.00.
COMMON STEERS: 50.00-60.00.
COMMERCIAL COWS: 38.00-44.00.
CANNERS-CUTTERS: 34.00-42.00.
SHELLS: 25.00-33.00.
SELECT HEIFERS: 60.00-64.00.
COMMON HEIFERS: 48.00-59.00.
GOOD FEEDERS: 60.00-70.00.
COMMON FEEDERS: 35.00-59.00.
BULLS: 42.00-55.00.

Farm Credit Announces Scholarships

LANCASTER (Lancaster Co.) — Keystone Farm Credit announces the availability of two \$500 scholarships toward the higher education of students planning careers in agriculture.

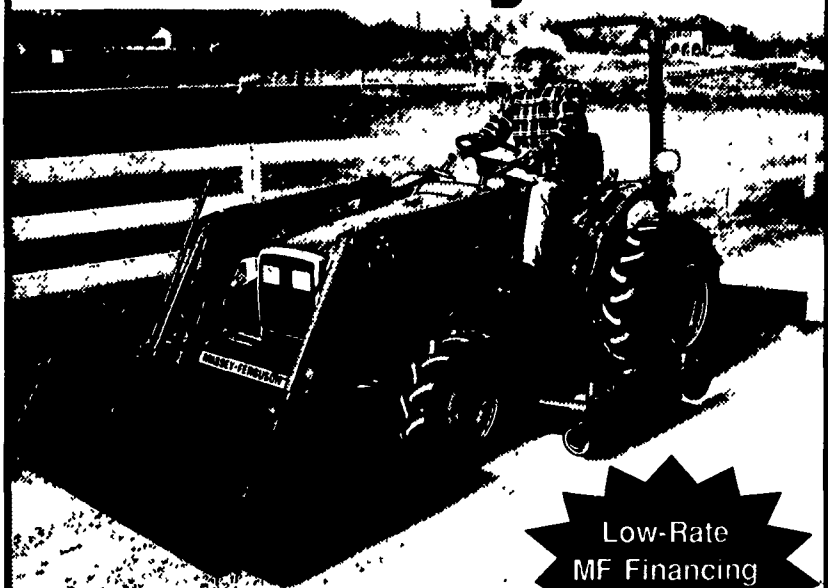
An applicant's parent(s) or guardian(s) must reside in one of the 15 counties that is serviced by Keystone Farm Credit. The counties are Berks, Bucks, Carbon, Chester, Delaware, Dauphin, Lancaster, Lebanon, Lehigh, Monroe, Montgomery, Northampton, Philadelphia, Pike, and Schuylkill. Applicants must be high school seniors planning to attend a four-year college on a full-time basis with agriculture or agribusiness as the major emphasis of study.

Notification of the availability of the two \$500 scholarships has been sent to the guidance departments of the secondary schools in Keystone's territory. Keystone also intends to reach as many of the private schools in the area as possible. Scholarships are not limited to the public school system.

Anyone whose educational institution was not contacted should write or call Keystone Farm Credit (Donna Dawson), P.O. Box 687, Avondale, PA 19311-0687, (610) 268-3013.

17-35 HP* MASSEY FERGUSON 1200 SERIES

A Tractor for Every Job



Low-Rate
MF Financing
Available

- 3-cylinder diesel engines
- 2 or 4-wheel drive
- Large, spacious operator's platform
- Lots of attachments and accessories
- MF Financing or Leasing

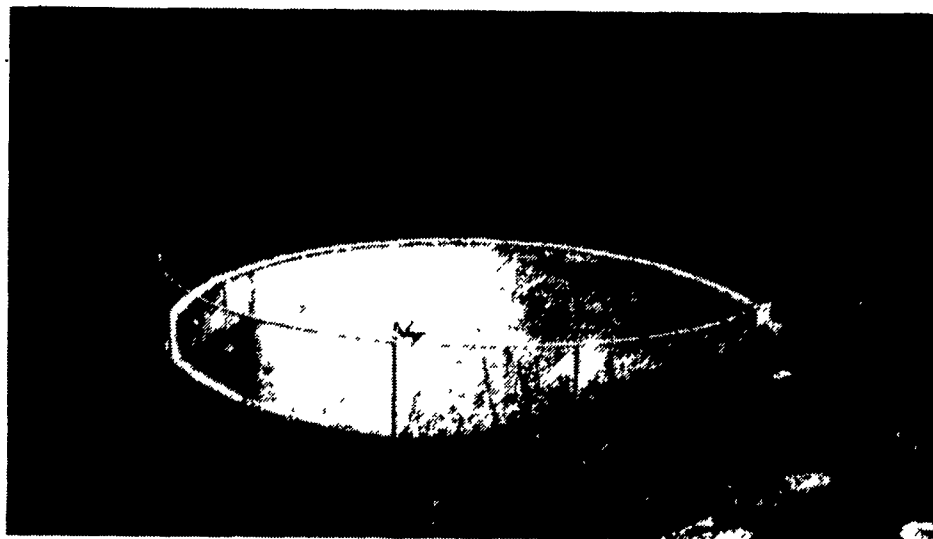
*Manufacturer's rated engine hp



LAWN CARE OF PA
Martindale, PA
717-445-4541

MASSEY FERGUSON
WORLD'S BEST-SELLING TRACTOR BRAND

• Agricultural • Commercial • Residential



Partial In-Ground Tank Featuring Commercial Chain Link Fence (5' High - SCS approved)

- Retaining Walls • Bunker Silos
- Manure Storage, Etc.

LET OUR EXPERIENCE WORK FOR YOU-ESTABLISHED SINCE 1979!
WE ORIGINATED THE CONCRETE SYSTEM!

Sizes And
Layouts
To Your
Specifications

We Work
Hard For
Customer
Satisfaction!

GROFFDALE CONCRETE
WALLS
INC.

430 Concrete Ave., Leola, PA
717-656-2016

Authorized
Dealer For
**KEYSTONE
CONCRETE
PRODUCTS**

- H-Bunks
- J-Bunks
- Trench
Silo Walls
- Hog &
Cattle Slats