

SAFEMARK

TACKLE the SAVINGS



ON TOP VALUE

SAFEMARK TIRES

QUALITY • SERVICE • DEPENDABILITY • ECONOMY

THE HARD WORKING MULTI-ANGLE M/B

- Excellent drawbar pull with long-bar, short-bar lugs for improved traction.
- Designed for improved stability and roadability, plus reduced vibration.
- Strong angle-braced lugs have self-cleaning design.
- High-strength polyester cord body and heavy duty rim shield help protect tire from damage.

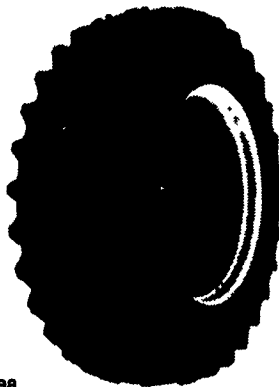


Size	Ply	Price
11.2x24	4 Ply	\$145.00
11.2x28	4 Ply	\$155.00
12.4x28	4 Ply	\$159.00
13.6x28	4 Ply	\$179.00
14.9x28	6 Ply	\$259.00
16.9x30	6 Ply	\$329.00
18.4x34	6 Ply	\$379.00
15.5x38	6 Ply	\$289.00
18.4x38	8 Ply	\$449.00

POWER MARK L/S RADIAL II

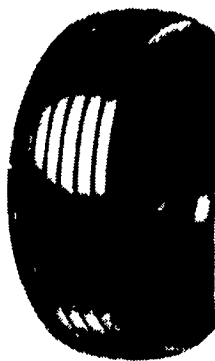
Radial Rear Tractor Tire

- Radial performance at a significantly lower price.
- New cavity shape for low carcass stress and long, narrow footprint, improved durability.
- Unique longbar/shortbar and longbar/longbar tread design with increased lug count for excellent roadability.
- Continuous no splice tread improves tire uniformity and eliminates open tread splices.
- Belt package gives excellent bruise and puncture resistance.
- Engineered to full Tire and Rim dimensions
- Heavy duty trash shield for extra bead area protection with pry notch.
- Size markings on lug face for easy identification in storage.



Size	Price
15.5R38★	\$349.00
18.4R34★	\$439.00
18.4R38★	\$509.00
20.8R38★	\$659.00
20.8R42★★	\$659.00

FARM UTILITY WAGON TIRES



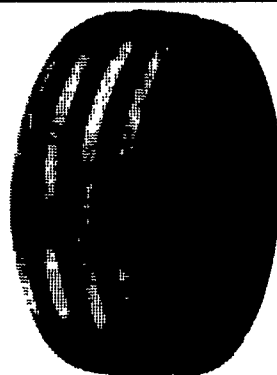
Size	Ply	Price
9.5L-14	8 Ply	\$44.00
11L-15	8 Ply	\$47.00
12.5L-15	8 Ply	\$64.00
12.5L-15	10 Ply	\$72.00
12.5L-16	14 Ply	\$89.00

SAFEMARK PREMIUM 3-Rib



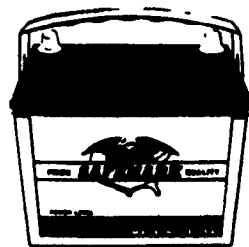
Size	Ply	Price
5.00-15	4 Ply	\$34.00
6.00-16	4 Ply	\$36.00
6.00-16	6 Ply	\$39.00
7.50-16	6 Ply	\$56.00
10.00-16	8 Ply	\$82.00
11.00-16	8 Ply	\$99.00

POWER GLIDE 4-Rib



Size	Ply	Price
9.5L-15	6 Ply	\$77.00
11L-15	8 Ply	\$99.00
7.50-16	6 Ply	\$69.00
10.00-16	8 Ply	\$86.00
11.00-16	8 Ply	\$109.00

BATTERY BARGAIN



\$47

5-24 650 CA

- Unique Bill board vent appearance
- Higher cranking than conventional batteries
- Sizes to fit most domestic and import cars and light trucks

Dependable performance in all weather conditions

FARM TRACTOR BATTERY

\$66

FC-30H 665 CA



- Rugged high impact case and cover for vibration resistance
- Increased starting power
- Built to last season after season
- Made in USA

A Proud Tradition of Quality, Value and Service

SAFEMARK

Division of Pennsylvania Farm Bureau

• QUALITY
• SERVICE

• DEPENDABILITY
• ECONOMY

CALL 1-800-PFA-TIRE For Dealer Nearest You

Participating SAFEMARK Dealers

- | | |
|--|---|
| Adams
Mar-Bar Tire Service
Hanover, PA 17331
(717) 633-6412 | Fulton
Clugston Farm Equipment
Needmore, PA 17238
(717) 573-2215 |
| Biglerville Tire & Auto
Biglerville, PA 17307
(717) 677-8338 | Greene
Burns Tire Service
Waynesburg, PA 15370
(412) 627-8263 |
| Blair
Rhodes Farm Supply
Williamsburg, PA 16693
(814) 832-2491 | Lancaster
Leola Tire Service
Leola, PA 17540
(717) 656-2574 |
| Bradford/Sullivan
Histand's Farm & Home Service
Rome PA 18837
(717) 744-2371 | Messick Farm Equip., Inc.
Elizabethtown, PA 17022
(717) 387-1319 |
| Bradford
Isaac's Tire Sales
Canton, PA 17724
(717) 673-8121 | Lebanon
Farr Family Tire
Palmyra, PA 17078
(717) 838-0151 |
| Centre
Dunkle & Grieb
Centre Hall, PA 16828
(814) 364-1421 | Lebanon Valley Implement Co., Inc.
Richland, PA 17087
(717) 866-7518 |
| Chester/Delaware
Enfield Equipment Inc
Oxford, PA 19350
(610) 932-8858 | Lahigh
Kermit K. Kistler
Lynnport, PA 18066
(610) 298-2011 |
| J&L Tire Service
Chatham, PA 19318
(610) 869-0450 | Joe's Battery & Tire
Allentown, PA 18103
(610) 437-4961 |
| S.G. Lewis & Sons
West Grove, PA 19390
(610) 869-2214 | Mifflin
Miller-Lake, Inc.
Belleville, PA 17004
(717) 935-2335 |
| Stoltzfus Farm Service
Cochranville, PA 19330
(610) 593-2407/2408 | Northampton/Monroe
Northampton Farm Bureau
Tatamy, PA 18085
(610) 759-3254 |
| Clinton
Dotterer Equipment, Inc.
Mill Hall, PA 17751
(717) 726-3471 | Northumberland
Rovendale Supply
Watsontown, PA 17777
(717) 538-5521
(717) 742-7521 |
| Columbia
Steve Shannon
Tire Co., Inc.
Bloomsburg, PA 17815
(800) 343-TIRE
Rte. 487, Benton, PA 17814
(717) 925-2821 | Schuylkill
Charles Snyder, Inc.
Tamaqua, PA 18252
(717) 386-5945 |
| Rt. 11
Danville, PA 17821
(717) 275-5506 | Somerset
Maple City Tire
Meyersdale, PA 15552
(814) 634-0545 |
| Cumberland
Barrick Tire Sales
Newville, PA 17241
(717) 776-5762 | Union
Allen Hoover Repair
Mifflinburg, PA 17844
(717) 966-3821 |
| Dauphin
Farr Family Tire
Middletown, PA 17057
(717) 944-4001 | Mifflinburg Farm Supply, Inc.
Mifflinburg, PA 17844
(717) 966-3114/3115 |
| Erie
Mike's Auto Repair
North East, PA 16428
(814) 725-9091 | Washington
Canonsburg Supply
Equipment Co., Inc.
Canonsburg, PA 15317
(412) 746-2500 |
| Franklin
Forrester Farm
Equip., LTD
Chambersburg, PA 17201
(717) 263-0705 | Wyoming
J. Roberts & Son Tire Co.
Meshoppen, PA 18630
(717) 833-5582 |
| Stoneham's
Waynesboro, PA 17268
(717) 762-3614 | York
Corn Hill Farm, Inc.
Etters, PA 17319
(717) 938-2012 |
| Bruce B. Gamble & Sons
Concord, PA 17217
(717) 349-2670 | NEW JERSEY
Farmer's Brokerage
& Supply, Inc.
Allentown, NJ 08501
(609) 259-7324 |

NOW SERVING NEW YORK, NEW JERSEY & CONNECTICUT