

Farm Calendar



(Continued from Page A10)

meeting, Delmarva Convention Center, Delmar, Md.
 Dairylea Cooperative Inc. annual meeting, Sheraton Inn, Liverpool, N.Y., thru Oct. 12.
 Juniata County Conservation Field Day, Art Zug Farm, Thompsonstown, 1 p.m.-4 p.m.
 Satellite Video Teleconference, Putting A Land Ethic Into Practice, Penn State Berks Campus, Reading, 7 p.m.-9 p.m.
Wednesday, October 12
 Pa. Council of Cooperatives annual meeting, Penn State Scanticon Conference Center Hotel, State College, thru Oct. 13.
 Virginia/Pennsylvania Turkey Days, Sheraton Inn, Harrisonburg, Va.
 Veterinary Nutrition Forum, Days Inn, Lancaster, 7 p.m.
 Expanding Pa. Products Seminar,

Wildwood Conference Center, Harrisburg Area Community College, 8:30 a.m.-3 p.m.
 Nutrient Management Advisory Board meeting, Market Street State Office Building, Harrisburg, 9:30 a.m.-3:30 p.m.
 Cover Crops and Soil Quality Field Day, Nordell Farm, Trout Run, 1 p.m.-4 p.m.
Thursday, October 13
 4-H N.E. Regional Leaders Forum, Durham, N.H., thru Oct. 16.
 Adams County Holstein Association annual meeting, 7 p.m.
 Lancaster County Pasture Walk, Roman Stoltzfoos Farm, Kinzers, 10:30 a.m.
 Bedford County Farm Field Day, Gateway Farms, New Enterprise, 10 a.m.-3 p.m.
 Pa. East Chapter of OCIA meeting, Farm Show Complex, Harrisburg, 7 p.m.

Westmoreland County Donohoe Center Open House, Donohoe Rd., near Westmoreland Mall, 10 a.m.

Friday, October 14

Saturday, October 15

Blue Mountain Antique Gas and Steam Engine Fall Harvest and Sawmill Show, Jacktown Community Center, Bangor, thru Oct. 16.

Sunday, October 16

Monday, October 17
 Columbus Day

New Farming Traditions Workshop, WMREC, Keedysville, 8:30 a.m.-4:30 p.m.
 Berks County Extension dinner meeting, 4-H Community Center, 6:15 p.m.

Tuesday, October 18

Dillsburg Community Fair, Dillsburg, thru Oct. 22.
 Lancaster County Bee Association Fall Honey Beeswax and Cooking Roundup, Dutch Gold Honey, Rohrerstown, 7 p.m.

Wednesday, October 19

PASA Nutrient Management Field Day, David and Terry Rice (Ojala Farms), Blair County, 10 a.m.-12:15 p.m. and Randy and Karen Huntsman Dairy, Martinsburg, 1:30 p.m.-3:30 p.m.

Thursday, October 20

National Meeting On Poultry Health and Processing, Sheraton Ocean City, Ocean City, Md., thru Oct. 21.

Uniontown Poultry and Farm Show, Uniontown, thru Oct. 23.

Workshop Series On Computerized Farm and Record Keeping, Lancaster Farm and Home Center, 10 a.m.-12 p.m. and 1 p.m.-3 p.m., also Oct. 27.

Pasture Walk, Dr. Robert and Helene Dreisbach, Hamburg, 10:30 a.m.-noon.

Conservation Easement Administrator's Workshop, Penn State Extension, Carlisle, 9 a.m.-4 p.m.

Saturday, October 22

Farm and Natural Lands Trust Harvest Fest, Brown's Orchard, Loganville, thru Oct. 23.

Sire Power Sale '94, Bloomsburg Fairgrounds, 11 a.m.

Lancaster County Rabbit and Cavy Breeders Association Rabbit Show, West Lampeter Fairgrounds, Lampeter, 9 a.m.

Penn State Open House, University Park, 10 a.m.-3 p.m.

Sunday, October 23

Monday, October 24

Managing Cover Crops For Increased Productivity, Days Inn, State College, thru Oct. 25.

Franklin County Conservation District Field Day, Edwin Shank Farm, Chambersburg, 9 a.m.-12 p.m.

Tuesday, October 25

Chester County Holstein Association annual meeting, West Fallowfield Christian School, Atglen, 7 p.m.

Lancaster County Poultry Association annual banquet, Willow Valley Convention Center, 6:30 p.m.

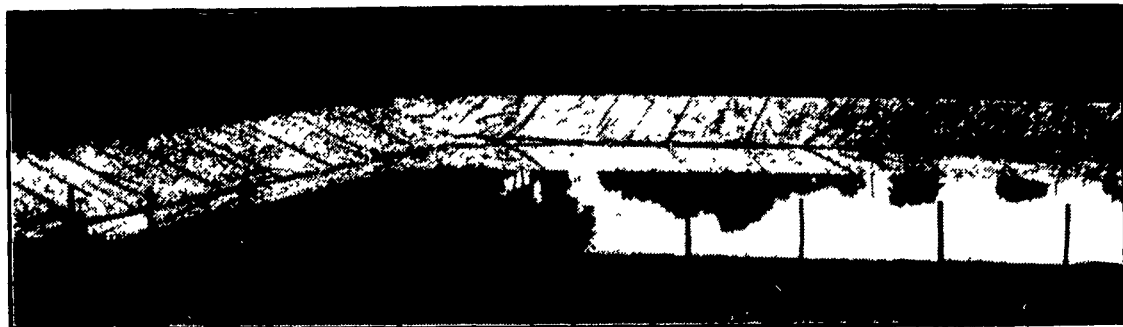
Lebanon County Holstein Association annual meeting, Schaefferstown Fire Hall, Schaefferstown, 7 p.m.

Come To Tully, New York

Located on Rt. 80, Five Miles East of I-81,
 Exit 14 at Tully, NY (Town of Fabius)

October 12 & 13, 1994

and see us install New York's First
H.D.P.E. (High Density Polyethylene - 60 Mil Thick) **Lined**
Earthen Banked, 1,000,000 Gallon
Manure Storage Installation



- ★ More Economical Than Concrete
- ★ Leak Detection System
- ★ Underlayment Between Liner and Earth
- ★ S.C.S. Approved
- ★ 20 Year Material Guarantee
- ★ Installed On-Site By Certified Installers

Special Deals On

THE VACU-PUMP

By Bodco

- ★ High Discharge Evacuation Pump
- ★ Available With 20" and 28" Turbine
- ★ Balanced Turbine
- ★ Main Shaft Mounted On Tapered Bearings In Oil Bath
- ★ Work At 540 R.P.M.

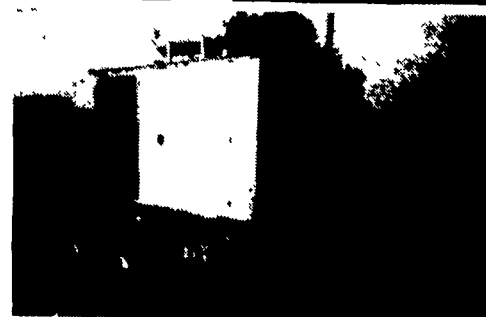


MANADA CONSTRUCTION CO.

Larry R. & Vaughn E. Brubaker, Owners
 Land Improvement & Excavation
 Contractors

151 Meckville Rd., Myerstown, Pa. 17067
 717-933-8853 or 933-4062

MARTIN MACHINERY



GENERATORS

- Sales ★ Service ★ Rentals
- ★ Complete Generator Systems
- ★ PTO ★ Portables ★ 2-1600 KW
- "We Service It If You Have It
 And Sell It If You Need It"

34 W. Mohler Church Rd.
 Ephrata, PA 17522

Tel: 717-738-0300
 Fax: 717-738-4329

SANDBLASTING AND SPRAY PAINTING WITH AERIAL LADDER EQUIPMENT



Farm Buildings — Feed Mills
 Commercial - Industrial

HENRY K. FISHER, INC.
 667 Hartman Station Road
 Lancaster, PA 17601
 717-393-6530