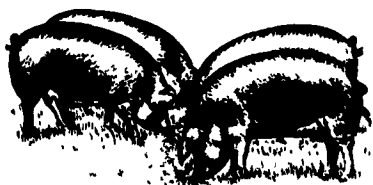


Hog Markets



Lancaster Hogs

Lancaster Stockyards
Saturday, October 1, 1994
Report supplied by auction

There will no longer be a sale auction on Saturday. Sales will be held Monday and Wednesday.

Grantsville Livestock

Grantsville, Maryland
Report Supplied by Auction
Sat., October 1, 1994

STOCK BULLS AND STEERS 200-500 LBS. 60.00-75.00.
STOCK HEIFERS: 60.00-70.00.
SLAUGHTER STEERS GOOD TO CHOICE 60.00-64.75; MEDIUM TO GOOD 49.50-58.50.
HOLSTEIN STEERS GOOD 55.00-57.00; LIGHT 50.50-54.00.
SLAUGHTER HEIFERS GOOD TO CHOICE 55.00-63.75; MEDIUM TO GOOD 45.00-54.00.
BULLS HEAVY 44.00-55.10, LIGHT 50.00-56.25.
COWS FEW HIGH DRESSING UP TO 44.50, UTILITY HOLSTEIN 40.00-43.00, CANNERS 36.00-39.00, CULLS 35.00 AND DOWN.
VEALS GOOD TO CHOICE 60.00-80.00, MEDIUM TO GOOD 55.00-68.00.
BOB CALVES: 40.00 AND DOWN.
HOLSTEIN BULL CALVES RETURN TO FARM 90-120 LBS. 60.00-85.00.
HOLSTEIN HEIFER CALVES RETURN TO FARM 100-120 LBS., NONE AVAILABLE.
BEEF CROSS CALVES RETURN TO FARM, NONE AVAILABLE.
HOGS TOP QUALITY 33.00-35.50; HEAVY 32.00-35.00, LIGHT 30.00-34.00, FEEDER PIGS BY THE HEAD 10.00-30.00.
SOWS 20.00-32.50.
MALE HOGS 15.00-20.00.
LAMBS 58.00-67.00; CULLS 60.00 AND DOWN; FEEDERS UP TO 70.00.
SHEEP 20.00-36.00.

New Holland Feeder Pigs

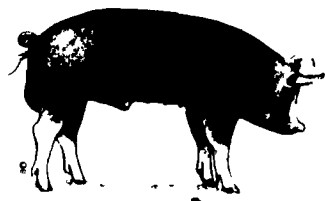
New Holland, PA
Wed., October 6, 1994
Report Supplied by Auction

TODAY: 873 HEAD
LAST WEDNESDAY: 1159 HEAD
LAST YEAR: 931 HEAD
TREND: COMPARED TO LAST WEDNESDAY, FEEDER PIGS 10.00-20.00 LOWER, INSTANCES 30.00 LOWER ON 30-39 LBS. ALL PIGS WEIGHTED ON ARRIVAL AND SOLD BY THE HUNDRED WEIGHT.
GRADE 1-2: 10 HEAD 27 LBS. 61.00, WEIGHTED AVERAGE 27.00, WEIGHTED PRICE 61.00; 166 HEAD 32-38 LBS. 42.00-52.00, WEIGHTED AVERAGE 36.18, WEIGHTED PRICE 45.78; 235 HEAD 41-49 LBS. 38.00-54.00, WEIGHTED AVERAGE 44.60, WEIGHTED PRICE 45.58; 173 HEAD 50-58 LBS. 38.00-50.00, WEIGHTED AVERAGE 52.45, WEIGHTED PRICE 45.51; 72 HEAD 61-66 LBS. 32.00-44.00, WEIGHTED AVERAGE 63.76, WEIGHTED PRICE 38.29; 49 HEAD 83-88 LBS. 32.00-33.00, WEIGHTED AVERAGE 85.59, WEIGHTED PRICE 32.40; 16 HEAD 103 LBS. 34.00, WEIGHTED AVERAGE 103.00, WEIGHTED PRICE 34.00.
US#2: 21 HEAD 36-38 LBS. 38.00, WEIGHTED AVERAGE 37.05, WEIGHTED PRICE 38.00; 23 HEAD 51 LBS. 25.00, WEIGHTED AVERAGE 51.00, WEIGHTED PRICE 25.00.
SLAUGHTER: 56 HEAD, 17-24 LBS. 87.00-102.00, WEIGHTED AVERAGE 20.43, WEIGHTED PRICE 94.99.

Indiana Hogs

Louisville, Kentucky
Thursday, October 6, 1994

BARROWS AND GILTS: STEADY TO WEAK. DEMAND LIGHT.
COUNTRY: PLANTS: US 1-3 230-260 LBS. 31.25-32.50 32.00-33.75 FEW 31.50 US 2-3 230-260 LBS. 28.50-31.50, 210-230 LBS. 27.50-29.50.
SOWS: MOSTLY STEADY.
US 1-3 300-500 LBS. 22.00-24.00, 500-650 LBS. 24.00-27.00, FEW OVER 650 LBS. 28.00-29.00 PRELIMINARY ESTIMATE: **29,000.
***RECEIPTS HAVE CHANGED DUE TO CHANGE IN REPORTING BASE.
THIS REPORT PREPARED BY THE LOUISVILLE, KY. OFFICE OF THE USDA LIVESTOCK AND GRAIN MARKET NEWS SERVICE--502-582-5287



Hay & Grain Markets



Diffenbach Auction Center

New Holland, Pa.
Monday, October 3, 1994
Report Supplied by Auction

TOTAL LOADS: 90.
ALFALFA: 67.00-150.00.
MIXED HAY: 76.00-160.00.
TIMOTHY: 97.00-165.00.
ORCHARD GRASS: 77.00-112.00.
STRAW: 75.00-172.00.
EAR CORN: 87.00-114.00.
RYE: 2.00-5.00.
FIREWOOD: 60.00.

North Jersey Market

Hackettstown, N.J.
Report Supplied by Auction
Tuesday, October 6, 1994

Hay—Straw & Grain Report
ALFALFA: 1 LOT AT 1.00 BALE.
MIXED HAY: 7 LOTS, .70-3.00.
CLOVER: 1 LOT AT 2.35 BALE.
GRASS: 13 LOTS, .60-2.80 BALE.
STRAW: 2.60 BALE.
SHELLED CORN: 2 LOTS, 7.25 AND 8.00 BAG.
CORN MEAL: 1 LOT AT 8.00 BAG.
OATS: 2 LOTS, 6.50 AND 7.75 BAG.

Green Dragon Hay

Ephrata, Pa.
Friday, Sept. 30, 1994

Report Supplied by Auction
73 TOTAL LOADS.
MIXED HAY: 75.00-145.00.
ALFALFA: 105.00-150.00.
TIMOTHY: 100.00-152.00.
ORCHARD GRASS: 65.00-135.00.
STUBBLE HAY: 57.00.
STRAW: 110.00-170.00.
EAR CORN: 80.00-101.00.
OATS: 2.00 BU.
FIREWOOD: 52.00 LOAD.
RYE: 4.80-4.90 BU.
WOOD SHAVINGS: 3.00 BAG.

Kirkwood Hay Auction

Kirkwood, Pa.
Tuesday, October 4, 1994
Report Supplied by Auction
30 LOADS OF HAY.
MIXED HAY: 1ST CUTTING 103.00-122.00, 2ND 120.00-125.00.
TIMOTHY: 125.00-147.00.
ALFALFA: 2ND CUTTING 96.00, 3RD CUTTING 122.00-152.00.
CLOVER: 99.00.
GRASS: 90.00-122.00.
WHEAT STRAW: 114.00-144.00.
RYE STRAW: 109.00-132.00.
EAR CORN: 80.00.
SALE TIME 11 A.M.

Keister's Hay

Middleburg, PA
October 4, 1994

Report supplied by auction
52 LOADS, 17 LOADS OF HAY.
MIXED HAY 70.00-115.00.
ALFALFA: 85.00 AND 120.00.
TIMOTHY: 85.00-90.00.
STRAW: 85.00-110.00.
EAR CORN: 21 LOADS, 75.00-100.00.
RYE: 2.60-4.25 BU.
OATS: 1 LOAD AT 1.85 BU.

Good's Hay

Leola, Pa.
Wed., October 5, 1994
Report Supplied by Auction

TOTAL LOADS: 48.
CORN: 82.00-92.00.
MIXED HAY: 70.00-147.00.
TIMOTHY: 127.00-140.00.
STRAW: 80.00-165.00.
ALFALFA: 90.00-120.00.
GRASS: 105.00.
CLOVER: 77.00.

Westminster Hay

Westminster, Md.
Tuesday, October 4, 1994

Report Supplied by Auction
ALFALFA: .50-3.80 BALE.
TIMOTHY: 55.00-90.00, 1.10-2.50 BALE.
MIXED HAY: 1.10-2.00 BALE.
GRASS: 1.00-1.40 BALE., 17.00 LARGE ROUND.
STRAW: 1.60-2.35 BALE.
STUBBLE: 1.05 BALE.
SALE BEGINS AT 11 A.M.
NEXT TUES., OCT. 11, SPECIAL FEEDER CATTLE SALE. EXPECTING 250 HEAD.

Leinbach's Hay

Shippensburg, PA
October 1 and 4

Report Supplied by Auction
27 LOADS.
ALFALFA: 77.00-126.00.
MIXED HAY: 75.00-97.00.
TIMOTHY: 95.00-120.00.
BROME GRASS: 60.00-105.00.
ORCHARD GRASS: 64.00-67.00.
STRAW: 104.00.
EAR CORN: 86.00-108.00.
FIREWOOD: 15.00-54.00.

Regional Hay

October 3, 1994
Eastern, Pa.

HAY & STRAW MARKET FOR EASTERN PA - (ALL HAY NO 2 AND BETTER, PRICES PAID BY DEALERS AT THE FARM & PER TON) HAY STEADY, STRAW STEADY TO 10 00 HIGHER

ALFALFA 70 00-110 00, MIXED HAY 70 00-105 00 FEW REPORTED 120, TIMOTHY 65 00-105 00 FEW REPORTED 120, STRAW 70 00-100 00, MULCH 25 00-40 00

SUMMARY OF LANCASTER CO. HAY AUCTIONS -FOR WEEK ENDING 9/30/94 PRICES PER TON. LOADS. 127 HAY, 42 STRAW & 45 EAR CORN

ALFALFA 79 00-156 00, MIXED HAY 50 00-130 00, TIMOTHY 82 00-167 00; STRAW 80 00-150 00, EAR CORN 80 00-107 00

SUMMARY OF CENTRAL PA. HAY AUCTIONS FOR WEEK ENDING 9/30/94. PRICES PER TON LOADS 69 HAY, 12 STRAW & 30 EAR CORN
ALFALFA 65.00-107.50; MIXED HAY 60.00-95.00; STRAW 75.00-105.00; EAR CORN 65.00-112.50

Kutztown Produce Auction

Hay Auction

Report Supplied by Auction
Saturday, October 1, 1994

TOTAL LOADS: 6.
ALFALFA HAY: 120.00.
MIXED HAY: 80.00.
WHEAT STRAW: 114.00.
EAR CORN: 80.00.
FIREWOOD: 50.00-90.00.

Dewart Hay

Dewart, PA.
Monday, October 3, 1994

Report Supplied by Auction
13 LOADS OF HAY, 57.00-86.00.
STRAW: 1 LOAD AT 57.00.
WOOD: 6 LOADS, 30.00-50.00 LOAD.
CORN: 5 LOADS, 70.00-94.00.
OATS: 1.50 BU.

HELP FOR A BUDGET HEADACHE

IN THE WANT ADS

KIRKWOOD HAY AUCTION
Hay, Straw and Grain Auction
EVERY TUESDAY
11:00

Located Rt. 472 5 miles south of Quarryville or 6 miles north of Oxford corner of Rt. 472 and Noble Road.

Lloyd H. Kreider,
Auctioneer
AU-000513L
No out of state checks

FEEDER CATTLE

Tues., Oct. 11 & 25
8:00 P.M.

Bring a Load - Buy a Load

CARLISLE

Livestock Market, Inc.
Turn South off I-81 at Exit 12
(717) 249-4511 or
evenings, Jim 249-2359

PIGS

STATE GRADED SALE
FRI., OCT. 14
1:30 P.M.

Carlisle

LIVESTOCK MARKET, INC.
Exit 12 Off I-81
(717) 249-4511 or
Evenings Jim, 249-2359

PENNFIELD GRAIN BANK

Pennfield Offers A Sound Program For The Dairy Farmer To Use His Grain "Same As Cash" To Reduce His Monthly Feed Bill And To Avoid Having To Take "Harvest Price" For His Grain

Prices Week Of 10/10/94
Corn \$2.40 Bu.
Soybeans \$5.21 Bu.
Barley \$1.82 Bu.

- No Storage Charges
- Prices Updated Weekly
- Grain Bank Balance Shown On Each Invoice
- No Hidden Charges

For every ton of qualifying dairy feed purchased you will receive one ton of grain back hauled at no charge

pennfield feeds

In This Issue

Five Sections

FEATURES

Lampeter Livestock Sale..... A25
Manheim Steer..... A27
Manheim Dairy..... A28
Manheim Sheep..... A32
Mifflin Farm Bureau..... A36
Shartlesville Cookbook..... B 2
Manheim Farm Show Queen B 4
Manheim Hog Show..... B12
Manheim Lead Line..... B14
Implant Series..... B17
All-American Show..... C11
Frederick Livestock Sale..... D 5

CORN TALK

Corn Grower President..... CT1
Between The Rows..... CT1
Farm Calendar..... CT1
Tassels Think They're Ears CT5
Research Update..... CT6
President's Message..... CT7
Narrow Row Corn..... CT8
Research Update..... CT12
Wasp Can Help..... CT18
Corn Hybrid Selection..... CT22

DAIRY

Lancaster DHIA..... D 2

COLUMNS

Now is the Time..... A10
On Being A Farm Wife..... B 4
Taking Time..... B 5
Consuming Thoughts..... B 7
Ida's Notebook..... B11
Family Living Focus..... B16
You Ask..... B28
Beef Briefs..... C 3
Poultry Pointers..... C 4

DEPARTMENTS

Editorial..... A10
Farm Calendar..... A10
Futures..... A16
Mailbox Markets..... B17
Sale Reports..... B22
Public Auction Register B24, B30
Business News..... C 6
Classified Ads..... C14, D 6

HOME AND YOUTH

Homestead Notes..... B 2
Home On The Range..... B 6
Cook's Question Corner..... B 8
Kid's Korner..... B10
Farm Women Societies..... B14
4-H Happenings..... B28

Walter M. Dunlap and Sons offers all cattle feeders two marketing days. Give us a call for advice and marketing conditions.

MONDAYS OR WEDNESDAYS

Consign With Us - For The Marketing Edge

Next Feeder Cattle Sale

Wednesday, October 12 - 11:00 A.M.

Walter M. Dunlap and Sons

Lancaster Stockyards

Tel. (717) 397-5136

An Old Line Commission Firm Keeping Ahead With The Times