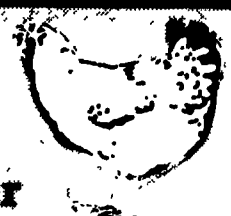




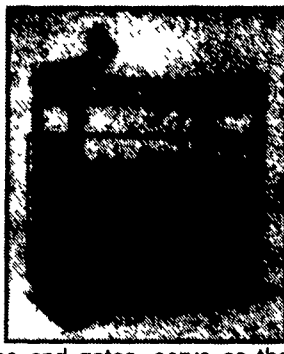
# FARMER BOY AG INC.

Your Complete Poultry & Swine Building & Equipment Center



## WayPig 500 ANIMAL SCALE

The bottom platform has non-skid surface with no gaps on the side through which feet can slip. The entire unit including sides and gates, serve as the weighing area. WayPig 500 & 505 scales can be ordered with wheels that can be quickly raised for level weighing.



## WayPig LITTER SCALE All Four Wheels Swivel

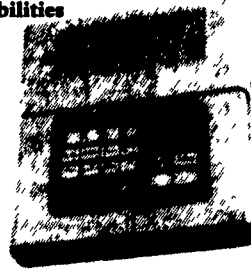
An entire litter can be placed in the portable WayPig at one time, as the scale handles loads up to 200 lbs. The oversize scale quickly gives you clear, precise readout of the total litter weight in both pounds and kilograms. The compact design lets you easily glide through narrow aisles and around tight corners.



## Sensaphone 1100 Advanced Desktop Monitoring System

Environmental/Process monitoring over telephone lines with full programming capabilities

- COMMUNICATIONS MONITORED:
- Temperature
  - Humidity
  - Water Immersion
  - Residue
  - Sound
  - Windows & Doors
  - ...and more!



COMMUNICATES OVER STANDARD PHONE LINES. Call us for pricing, status checks on all monitored locations, using any telephone. The Sensaphone computer is simple to use - no programming required.

### ALERT

UP TO 4 DIAL-OUT NUMBERS. If small numbers occur the Sensaphone will automatically dial up to four numbers in sequence to deliver you of the problem. Numbers may be up to 14 digits each, with your choice of pulse or tone dial-out.

## TANDEM PRODUCTS, INC. LIVESTOCK EQUIPMENT



## Tenderfoot/NS

For Small Animals Up To 100 Lbs

Tenderfoot/NS (Nursery) is specifically designed for use in standard nurseries and will accommodate pigs up to 100 lbs. Tenderfoot/NS is also used for many other small animal applications such as zoos, dog kennels, etc.



A Better, Warmer, Bedding-Type Environment. When installed in the side edge or cross area of a farrowing crate, Tenderfoot/NS will greet your newborn piglets with a soft warm bedding-type environment. These painful and costly bruise, abrasions and other skinning problems are greatly reduced. Tenderfoot/NS 9 gauge expanded metal has hole openings that measure 1/4" x 3/4".



## POLYFENCE - LINE FEED BUNKS



EASY INSTALLATION!

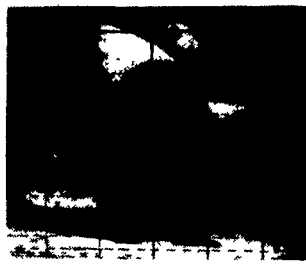
- Each bunk takes 1/2" x 1/2" x 1/2" caps and end caps.
- Each bunk has a built-in frame and a 1/2" x 1/2" x 1/2" cap.
- Each bunk has a built-in frame and a 1/2" x 1/2" x 1/2" cap.
- You'll like the way clean and all year long.

- Each heavy-duty 1/2" x 1/2" x 1/2" cap.
- Each heavy-duty 1/2" x 1/2" x 1/2" cap.
- Each heavy-duty 1/2" x 1/2" x 1/2" cap.

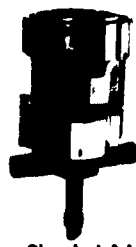


Material - polyethylene (Backline) Size - 8 long 34 wide at the top 30" wide at the bottom 30" high on the high side (feeder wagon side) 23" high on the short side (cattle side)

## Galvanized Hog, Cattle & Horse Panels



## DOSATRON LIQUID DISPENSER

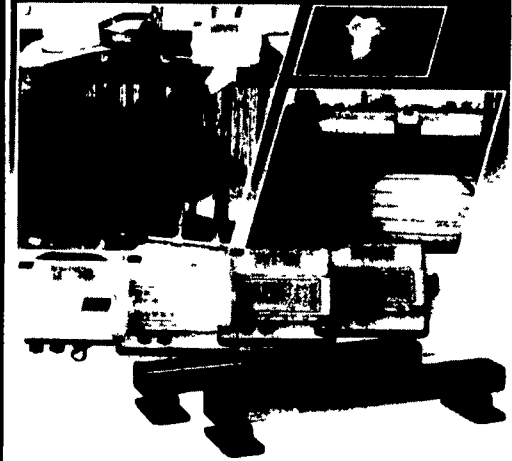


- Accurately Meter...
- Antibiotics
  - Coccolidostats
  - Drugs
  - Disinfectants
  - Sulfas
  - Vaccines
  - Wormers
  - Vitamins
  - Fertilizers

Chemical Additives... Into Livestock and Poultry Drinking Water or Into Irrigating Systems.

Adjustable ratios: 1:100, 1:125, 1:200  
 Dosatron 7 GPM Technical Specifications:  
 Adjustable Ratios: 1:100, 1:125, 1:200  
 Minimum Flow: 13 GPH  
 Maximum Flow: 400 GPH  
 Min. Oper. Pressure: 7 PSI  
 Max. Oper. Pressure: 72 PSI  
 Connections: 1/2" NPT  
 Dimensions: Height 11" Width 8" Weight: 3.5 lbs.

## TRU-TEST 700 SERIES AGRICULTURAL WEIGHING SYSTEMS



## BURN-EASY Incinerators

The quick, easy way dispose of dead animals. Very little odor, minimum smoke and residue

- 100#, 300#, 500# and 800# models
- Leaves 1 gallon of ash per 100#
- Burns 50# of flesh per hour
- Large units have 30" end loading door
- Low profile, easy-to-load
- Oil firing unit has 1-year guarantee
- Optional 14" clean-out door



## Choose From 2 Models

- C80M - variable output (40,000 or 80,000 BTUH)
- C225 - 225,000 BTUH unit. Each is LP or natural

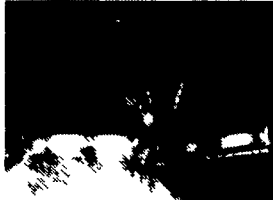
gas compatible and can be mounted inside or outside your confinement house. Unique "bent flame" design increase flame's surface area and heat chamber efficiency. More warm air is drawn across the fan and blown out side vent.

## FEED BINS (GSI)

We assemble, deliver & set-up bins on your farm.

Ground controlled fill caps

Each unit provides 1.2 square feet of intake area and is designed to operate under negative pressure. Inlets are constructed of fiberglass composite and Styrofoam. Units measure 16.5" square and mount directly into the ceiling and project into the attic. An insulation-stop is provided. Stainless steel counter weights and a manual lock adjustment make it unsurpassed in performance.



Models Available: Your Choice Of 6, 7, 9, 12 and 15 Ft. All Galvanized Hopper-Bottom Bins

## WELDED FINISHING FEEDER

Single or Double Sided

A-P offers a quality line of economically priced, all welded, stainless steel hog feeders which are available in single-sided and double-sided (pictured above) styles. With feeding capabilities ranging from 4 holes up to 14 holes, you'll be sure to find a feeder just right for your installation.

## 4-Hole Double-Sided Finishing Feeder SPECIFICATIONS:

Model Number	Number of Holes	Width	Height	Length	Maximum Capacity
<b>SINGLE SIDED FEEDERS</b>					
AP-4SW	4	14 1/4"	31 1/4"	40 1/4"	261 lbs
AP-5SW	5	14 1/4"	31 1/4"	50 1/4"	313 lbs
AP-6SW	6	14 1/4"	31 1/4"	60 1/4"	365 lbs
AP-7SW	7	14 1/4"	31 1/4"	70 1/4"	417 lbs
<b>DOUBLE SIDED FEEDERS</b>					
AP-4DW	8	25 1/4"	31 1/4"	40 1/4"	338 lbs
AP-5DW	10	25 1/4"	31 1/4"	50 1/4"	405 lbs
AP-6DW	12	25 1/4"	31 1/4"	60 1/4"	472 lbs
AP-7DW	14	25 1/4"	31 1/4"	70 1/4"	539 lbs

All models come fully-assembled

### Features:

- 304 Stainless Steel construction.
- All welded construction.
- Easily adjustable and multi-movement agitator gate.
- All exposed edges are hemmed for safety.
- Standard Single-Sided models available with 4, 5 and 6 holes; Standard Double-Sided models available with 8, 10 and 12 feed holes. 7 hole and 14 hole sizes available (special order only).



A Division of GSI

## AAA GLASS-PAC FIBERGLASS VENTILATION FANS

Streamlined Fiberglass Fan Housing

- Plastic Shutter

- Solid One-Piece Fiberglass Propellers
- Heavy Duty Motors
- All Aluminum Motor Unit
- Stainless Steel Hardware
- Vinyl-Coated Steel Front Guard



AAA NEVER-RUST AIR FOIL SHUTTERS NO RUST, NO CORROSION

AVAILABLE IN BACK-DRAFT MODEL

## AQUA BLAST

PRESSURE WASHERS



ELECTRIC COLD P3160EC

GAS HOT



P4230EHLF

Full Line Of Parts In Stock For Your Poultry And Hog Needs

Hours: M-F 7:00-5:00; Sat. 7:30-11:30



# FARMER BOY AG.

410 E LINCOLN AVE (RT 422)

MYERSTOWN, PA 17067

PH. 717-866-7565

Check Our Warehouse Prices



WE SHIP UPS



SEE PAUL, JAY OR STEVE FOR YOUR PARTS AND EQUIPMENT NEEDS