

## Increase Cattle Gains!

### TOX-O-WIK® Cattle Oiler and Face Fly Fighter

It keeps cattle comfortable year around and free of weight-robbing insects and disease. It's automatic, trouble-free and rugged. Plus it pays for itself in profits from increased weight gain.

Our special TOX-O-WIK Insecticide is compatible with the animals natural body oils, skin and hair and keeps them free of flies, lice, grubs, ticks, mange and pinkeye.

- Insecticide tank wick feeds automatically, no valves, jets or pumps to clog.
- Mineral feeder
- 1 to 4 applicators per unit
- TOX-O-WIK Insecticide is the only insecticide recommended for TOX-O-WIK Cattle Oilers
- Dairy units also available



**TOX-O-WIK PRODUCTS, PARTS AND SERVICE**  
AVAILABLE FROM:

<b>EDWIN HOOVER</b> 360 INDIANTOWN RD EPHRATA, PA 17522 717-733-8313	<b>EDMUND DUTTERER</b> 2348 FRIZZELBURG RD WESTMINSTER, MD 21157 410-848-8630
---	--

**TOLL FREE: 1-800-530-5759**

## Public Auction Register

Closing Date Monday 5:00 P.M.  
of each week's publication

### OCTOBER

**SAT. OCT. 1 - 9AM, Fall Consignment Auction Of Tractors, Farm Machinery, Tools, Bldg. Supplies, Lawn & Garden. Located Ikenock Auctions, New Park, Pa. Ikenock Auct.**

**SAT. OCT. 1 - 10AM, Special Auction For Nursery Stock & Landscape Equipment. Located Barber Hill Rd., Groveland, 8 Miles South East Of Geneseo, 2 Miles South West Of Conesus Lake, 30 Miles South Of Rochester. Roy Teitsworth, Inc. Sales Managers & Aucts.**

**SAT. OCT. 1 - 10AM, Auction Sale & Flea Market. Located The New Force Machinery.**

**SAT. OCT. 1 - 3PM, Fairplay's Antique Tractor & Engine Show. Located Off Sharpsburg Pike (Route 65) Fairplay, Md. From I-81 Take Route 68 To Route 65 South To Fairplay. Douglas C. May & Other Local Aucts.**

**SAT. OCT. 1 - 4PM, Tool Auction. Located In Bayview, Md. On Rt. 274, 40**

**Miles South Of Lancaster, 7 Miles South Of Oxford, Pa., 1 Mile Off I-95 Exit 100. Jim Racine, Auct.**

**TUES. OCT. 4 - 10AM 1982 Mercedes-Benz, oriental rugs, carpet, doors, kitchen cabinets, vanities, tools. 1825 E. Boston Ave., Phila. Pa. Wm. F. Comly & Son, Inc., aucts.**

**SAT. OCT. 8 - 9AM Farm machinery, lawn & garden equip., tools, household. Held at 1434 E. Deep Run Rd., Westminster, Md, Carroll Co. From Manchester take Md. Rt. 309 N. approx. 3 miles, turn left onto Deep Run and go 2 miles to auction. Nevin E. Tasto auct.**

**SAT. OCT. 8 - 10AM Genesee Schoohouse, Genesee, Pa. 12 miles S. of Wellsville, NY, Rt. 219, 20 miles N. of Coudersport, PA, John F. Eshleman Estate.**

**SUN. OCT. 9 - 12:31 PM Antiques & Collectibles. Bucktrail Inn, Sinnemahoning, Pa. Along Mn. Hwy. Rt. 120 just W. of Sinnemahoning, Pa. Cameron Co., Pa. West of Renovo, South of Coudersport. Reed aucts.**

## Knob View Wins

(Continued from Page A37)

Doody brought home the third place win with C Hill View Sport Mini-pearl.

The Dry Cow category, entries to which must have freshened at least once, was another opportunity for Har-Land Manor to dominate. Two of their entries, Ma-Mere RSF Delux Maurie, and Har-Land Manor EN Shari-Red, took first and third -places respectively. MD-Gaywinds Inspire Fern, owned by Gaywinds Farm, captured second

place. the four-year-old Class. She also came in second of all show entries for cow judged on udder alone. Second place in the four-year-olds was awarded to Flo-Look Shogun Jenny, owned by Casey Flook.

Five years and over top honors went to C Bosdale AM Glory-Red-ET, owned by Har-Land Manor. Wambling-Walls Kit Kat-Red, owned by William Kepler and Donna Free, came in second. Mike and Elizabeth

## Winners (Continued from Page A22)

Class 2 1 Nicole Erenhart 2 Bobbi Myers 3 Kelly Myers

Class 3 1 Jody Dutrey 2 Matt Trostle 3 Jodi Dutrey

### MEDIUMWEIGHT

Class 1 1 Sarah Kitzmiller 2 Ashley Huntington, 3 Matt Sellers

Class 2 1 Kelly Dutrey, 2 Jodi Dutrey 3 George Dutrey

Class 3 1 James Neutzel 2 Jon Brub, 3 Gerald Shue

Champion Kelly Dutrey  
Reserve Champion James Neutzel

### LIGHT HEAVYWEIGHT

Class 1 1 Adam Setz 2 Heather Jasenski 3 Kelly Dutrey

Class 2 1 Dave Myers, 2 Adam Sellers, 3 Matt Trostle

Class 3 1 Bobbi Myers 2 Bobbi Myers, 3 Adam Sellers

Champion Bobbi Myers  
Reserve Champion Dave Myers

### HEAVYWEIGHT

Class 1 1 Heather Jasenski, 2 Adam Sellers, 3 Kathleen Jenkins

Class 2 1 Jason Frantz 2 Tammi Grubb, 3 Heather Jasenski

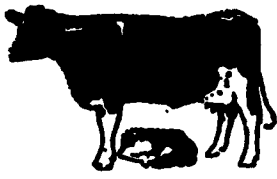
Class 3 1 Tammi Grubb, 2 Rachel Price, 3 Heather Jasenski

Champion Jason Frantz  
Reserve Champion Heather Jasenski

## Complete Herd Dispersal

at the Belleville Live Stock Auction from Maryland

Wednesday, Oct 12 1994

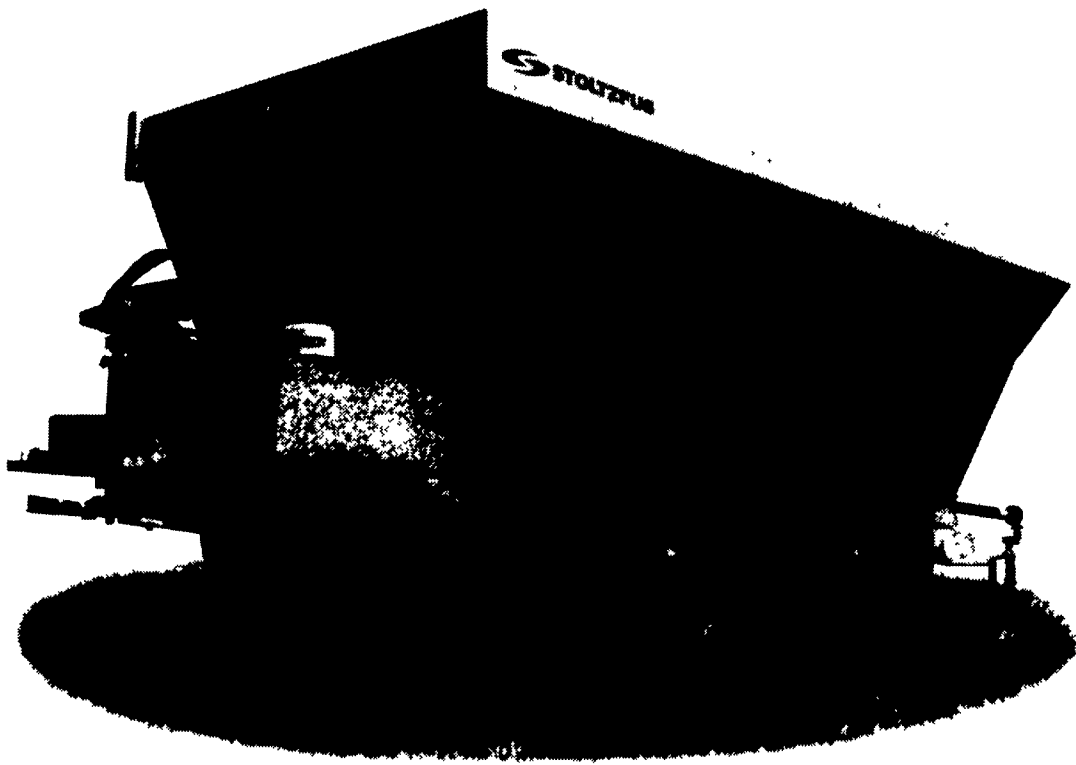


### 70 Head Holstiens 70

62 Mature Cows, 8 Fancy Springing Heifers. All AI Sired ID. All Calf Vac. Closed Herd For 12 Years. All Animals In This Herd Are Off Spring's, Going Back To The Marlin Hoff Breeding. A Young Herd You Will Like. Selling Due To Discontinuing Dairy Operation.

Consigned By  
**Glen Fite**  
Agent For Owner  
Phone 1-717-786-2750

# Sometimes You Need A Spreader Built Like A Tank.



When spreading stockpiled lime, for example. The Stoltzfus Wet Lime Spreader is likely the most powerful spreader of its kind on the market today. You see, we've been building them since 1945, and farmers are still using Stoltzfus Wet Lime Spreaders they've had for 20, even 30 years. Our special drag chain is 4 times stronger than stainless steel, and handles frozen and heavy stockpiled lime with ease. Plus, for spreading compost, composted sludge, poultry litter

- Two-ton, five-ton, eight-ton models
- PTO, 540 rpm or 1,000 rpm
- Two-speed conveyor chain
- Leaf spring suspension
- Dual 24" spinners
- Spreads 40' effectively
- One-sided spreading capability
- Truck-mounted models available



**1-800-843-8731**

Morgan Way, P.O. Box 527, Morgantown, PA 19543

and certain fertilizers, the WLS is without equal for sheer volume spreading. We call that performance. You'll call it terrific:

We hope you compare a Stoltzfus WLS with other spreaders. It makes us look even better. Price? Sure we may be a little more. But when you end up replacing cheaper units in a few short years, what have you saved? Stoltzfus quality always pays for itself many times over.

Just how tough is a Stoltzfus WLS? Plenty tough. Call today. We'll tell you where to find the dealer nearest you, and send you free literature to inspect.

## LATE NOTICE!!

Selling at  
**NEW HOLLAND SALES STABLES DAIRY SALE**

**WEDNESDAY, OCT. 5**

**HERD DISPERSAL**

**MIXED HERD 26 COWS  
HOLSTEIN - GUERNSEY - AYRSHIRE  
IN ALL STAGES OF LACTATION  
ALSO OPEN AND BRED HEIFERS**

See additional consignments Page E34 this issue.

## CONESTOGA VALLEY ENTERPRISES

HI-MAG **AG LINE** HI-CAL



Cash Discount Savings on Delivery  
For your convenience calls received  
Mon.-Sat. until 9:00 pm

**1-800-724-3277**

Serving PA, MD, Delmarva & NJ

## Long Distance Phone Service

Worldwide by AT&T, Excel, LCI & others  
Calls to anywhere in USA for as low as

**10¢ per minute daytime  
7¢ per minute night & weekend**

**50% Off AT&T rates Guaranteed**

**No sign up costs No monthly fees**

**No minimum usage required**

**Business day rates as low as .0837/mn.**

**For comparison, bring your phone bill to**

**Public Meeting**

**Tuesday, Oct. 4 at 7:00 PM**

or send copy of bill for free comparison

**Tel-Com Phone Service**

520 Prescott Rd. Lebanon, Pa.

(300' south of intersection in Prescott)

**Sales Representatives wanted**

**For more information call 717-866-6520.**