

## Percheron Farm

(Continued from Page A1)

to Penn State for the annual state judging contest. A visitor to the farm gets the impression these

large beautiful horses are just overgrown pets, affectionately called "you guys" by the Cole family.

### Classic Swine Sale Oct. 7

HARRISBURG (DAUPHIN CO.) — On Friday evening, October 7, at 6 p.m., the annual Keystone Classic Swine Sale will be held in the small arena at the Farm Show Complex in Harris-

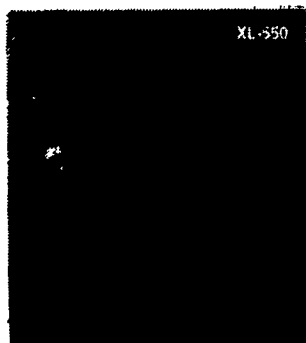
burg. This sale is a part of the Keystone International Livestock Show.

These hogs will be shown on Friday morning at 9 a.m.

Chad demonstrates the lift and action of the front hooves needed in a lead horse for the six-horse hitch.

## NITE TRACKER® QUARTZ HALOGEN SPOTLIGHTS

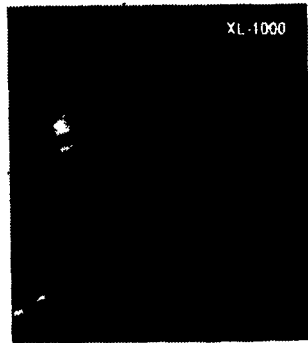
USA MADE



NEW!

Now comes with coil cord.

ONLY \$22<sup>25</sup>



OUR BRIGHTEST, MOST POWERFUL SPOTLIGHT!

NEW!

Now comes with coil cord.

ONLY \$31<sup>95</sup>

**NITE TRACKER® XL-550**  
Illuminates ten times brighter than automotive headlights. The brilliance of its beam carries over one mile. The 500,000 candlepower beam is one of the world's most powerful quartz halogen hand held spotlights. Operates from any 12 volt source. Lock-on/lock-off trigger for signaling. Convenient hanging loop allows for hands free use. Equipped with 8' cord, mounting threads and tabs for optional shoulder strap. Made in the U.S.A.

**NITE TRACKER® XL-1000**  
One million candlepower illuminates twenty times brighter than automotive headlights, even brighter than aircraft landing lights. The brilliance of its beam carries over one mile. Little wonder that it is the world's most powerful quartz halogen hand held spotlight. Operates from any 12 volt source (car, boat, camper, truck or optional battery pack). Lock-on/lock-off trigger switch. Convenient hanging loop allows light to be moved about and used where needed. Equipped with 8' cord, mounting threads and tabs for optional shoulder strap. Made in the U.S.A.

500,000 candlepower cordless rechargeable spotlight same as above. can be charged off a 12 volt battery. Why drag a battery along? 12 volt and 110 volt chargers included. Completely portable!

250,000 Candlepower Also Available **YOUR CHOICE - \$49<sup>00</sup> ea.**

Orders Under \$100.00 Add \$3.00 For UPS • PA Residents Add 6% Tax

### BEILER'S PNEUMATICS

718 Vintage Road, Christiana, PA 17509

## EARLY AMERICAN STEAM ENGINE SOCIETY 37th ANNUAL

# STEAM-O-RAMA

SEPT. 29 & 30 OCT. 1 & 2 1994

SHOWGROUNDS LOCATED NEAR WINDSOR, PA

From I-83, Exit 7 take Route 124 East for 7.5 miles to Manor Road turnright onto Manor Road for 1.3 miles to Show Grounds.

EXHIBITORS WELCOME/FLEA MARKET SPACES AVAILABLE

DRAWING FOR 5 FREE MEAL TICKETS EVERY DAY

IMPROVED PARKING - 8 ACRES ADJOINING PARK

ADMISSION \$1.00 PER PERSON ADMISSION UNDER 12 FREE.

FEATURING PENNSYLVANIA MANUFACTURED GAS ENGINES

FRI., SEPTEMBER 30 - "FIDDLIN' COUNTRY", 6 PM

SAT. OCTOBER 1 - 1:00-4:00 - COMPETITIVE HORSE PULLING,  
6 PM-10 PM BILL RUNKLE'S "PIPE CREEK BLUEGRASS"

1952 ALLIS CHALMERS "CA" WFE  
DRAWING 4:00 P.M., SUNDAY OCT. 2, 1994

### -STEAM ON PARADE DAILY-

Steam Engines Calliope Antique Tractors Rumely Oil Pulls  
Baker Fan Thresher Baler Shingle Mill Rock Crusher  
Dynamometer Operating Saw Mill Black Smith Shop  
Petting Zoo • Antique Cars & Trucks • Flea Market

Sausage Sandwiches Apple Butter Boil Pig Roast  
Fresh Ground Corn Meal Pan Haus Cooking Contest

FOR FURTHER DETAILS CONTACT:

Sue Knaub - 850 S. Pleasant Ave., Dallastown, PA 17313  
Phone: (717) 244-2912



## Raven Tough Polyethylene Tanks

We Also Stock A Complete Line Of:

**TeeJet**  
Sprayer Nozzles  
And  
Accessories

**Hyprow**  
Pumps  
And  
Accessories

**PACER  
PUMPS**

- Sprayer Hose
- Ball Valves
- Nylon Fittings
- Poly Tanks

## PAUL B. ZIMMERMAN, INC.

50 Woodcorner RD. • Lititz, PA 17543

1 Mile West of Ephrata

(717) 738-7350

• HARDWARE • FARM SUPPLIES •

**HOURS**  
Mon. Thru. Fri. 7 a.m.-6 p.m.  
Sat. 7 a.m.-5 p.m.  
Sun. 7 a.m.-4 p.m.

ASK AGWAY

# SAVE 15%

on Metal Roofing & Siding

AGWAY OFFERS HIGH QUALITY  
PRODUCTS FROM

**ALUMAX**

### FEATURING:

- 15 PAINT COLORS + GALVANIZED
- 29 GA. PAINTED STEEL WITH A 20 YEAR PAINT WARRANTY
- CUSTOM LENGTHS AVAILABLE
- G-90 (1 1/4 OZ. OF ZINC PER SQ. FT.)

Stop by your nearest Agway store  
or representative.

Sale ends October 31, 1994

**AGWAY.**