

Junior Livestock Sale Benefits Exhibitors, Activities



Lane Farm on a \$1.15 bid. The 93-pound reserve champion light medium weight, shown by Lindsay Jones, East Berlin, brought a final \$2.25 bid from buyer KDV Orthopedics. Jerry's Food Rite was the successful bidder, at \$1.05 per pound, on the 80-pound reserve champion light weight exhibited by Meghan Hayes.

Sale average on the lambs was \$1.19 with the champion, and \$1.17 without the champion.

Champion lightweight steer buyer was the Glen Rock State Bank, with a \$1 per pound bid on the 1,050-pounder exhibited by Brett Bishard, York. Keith Grubb's champion medium weight at 1,119 pounds sold to Brad Bishard Insurance on an 85-cent bid.

(Turn to Page A35)



York County's state-winning 4-H Meats Judging Team gather with the cake that earned \$825 toward their upcoming trip to national competition. Front from left are team members Shanna Daugherty, Jen Altobelli, and Cindy Dehoff, and rear are coach Mike Bankert and cake baker, decorator and donor Lois Rankin.

A \$3.00 per pound bid by Hoss' Steak and Sea House bought the champion steer from 4-H exhibitor Shawn Waltimeyer. Rob Billet, left, and Craig Campbell, bidding for Hoss', then donated the steer back to be resold, benefiting the 4-H meats judging team. Walter's Cattle Company was the second buyer.

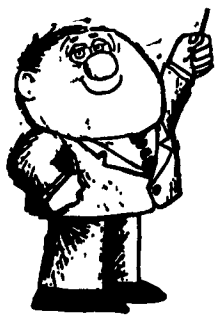
(Continued from Page A24)
pound to Walter Dunlap Livestock. Agway of West York was the buyer at \$1.15 per pound of the 80-pound lightweight cham-

pion, exhibited by Heather Moyer, Hanover.

Jacob Ebersole, York, had the 113-pound reserve champion lightweight, sold to Dogwood



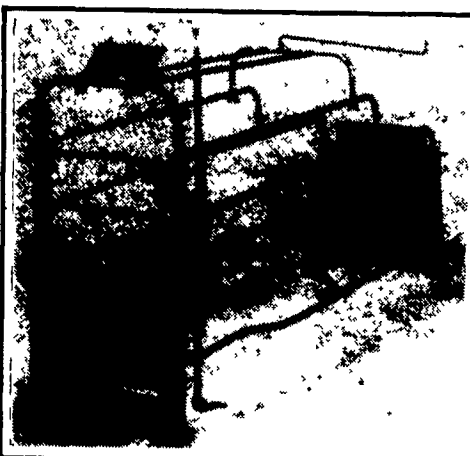
TRI-COUNTY HOG EQUIPMENT \$ VALUE LEADER \$



A LESSON WELL LEARNED... LANCASTER FARMING'S CLASSIFIED ADS GET RESULTS!

PIG SAVER "DUTCH CRATE"

Developed through testing in our research farms the goal was to develop a crate that nearly eliminates crushing, due to lay over, unmatched durability and be easy to work around. All this has been achieved by a unique gravity fill-pull that forces cows to lie down slowly and using stainless steel for rear doors and legs, proven horizontal and solid steel rod construction. All this at a reasonable cost. Crates also can be installed on an angle.

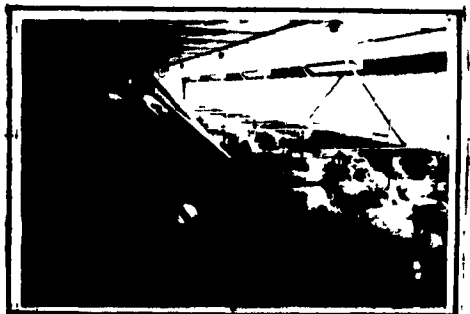
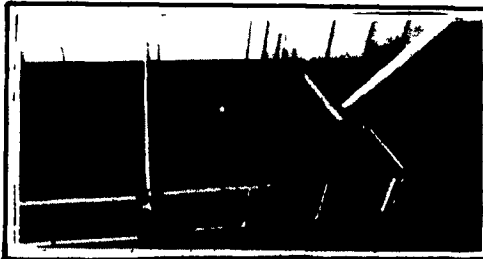


CONFINEMENT STALL

Developed recently in our R&D farm. Our goals were convenience, safety and durability. The low back and flat top rails are easy to reach over with no sharp edges. Stainless steel rear legs and front feet along with solid steel horizontal rods through punched uprights provide the strongest, most durable stall ever produced by Tri-County (21" x 24" O.C. x 86")

NURSERY PENNING

Nursery penning has been improved by the use of an optional solid stainless steel panel on the front gates which keeps walkways clean. Stainless steel verticals on penning eliminates corrosion where penning attaches to the floor. Stainless steel drinker pipes & mounting brackets also increase durability.



FINISHING PENNING

Optional stainless steel verticals and fasteners offer improved durability over other similar types of penning. Loop and flapper latch arrangement eliminates the use of drop pins. Stainless steel fence line feeders provide excellent durability and a minimum of waste.

TRI-COUNTY

1717 271 3188

Natchez Animal Supply
Low Prices
Eqvalan Horse Wormer (ivermectin paste 1.87%) \$9.19 per Tube
• VACCINE • ANTIHISTAMINE • VITAMINS
• WORMERS • INSECTICIDES
PRODUCTS FOR CATTLE...DOG...CAT...HORSE...SWINE
Request ★ New Catalog
P.O. Box 1638V • Natchez, MS 39121
1-800-647-6780
2nd Day and next day air available

Apple Cider Equipment

apple peeler, picking bags, apple washer, cooper kettle, cash register, conveyors, barrels, plastic jugs & lids, metal jug baskets, crates, hand truck peach baskets, fruit baskets, glass jugs & lids
(717) 292-3077

REWARD!

CASH FOR YOUR **BLACK WALNUTS!**

\$10 PER 100 LB. | STARTS OCTOBER 1

Money **does** grow on trees! Pick up your Black Walnuts and bring them to any HAMMONS Hulling Station listed below. Walnuts will start at \$10 per 100 lbs after hulling. Hulling begins Saturday, October 1

Jonas Stoltzfus -
Christiana, PA
(896 S of Hw. 30 to Windy Top Rd)
Elam Nolt
East Earl, PA
215-445-7101

HAMMONS
PRODUCTS COMPANY
STOCKTON MISSOURI
Established 1946
417-276-5181

ECI Calf Milk Replacer

New ... Improved
Now contains
INSTANT PLUS

Now ECI Milk Replacer is even easier to use with this newly developed additive. *Instant* solubility . . . and the mixed formula stays mixed with all the necessary nutrients suspended in the liquid. Sedimentation is virtually eliminated. Same feeding directions, same size bag, same measuring cup, same top quality you associate with all ECI labeled products. Now available in 10% and 20% high fat content.



LOOKS LIKE MILK
FEEDS LIKE MILK

at less than half the cost!

Excellent feeding results at a dollar cost you'll find hard to believe. One 50 lb. bag makes 500 lbs. of food. Economy PLUS the scientific way to raise outstanding herd replacements. Use ECI Calf Milk Replacer with the high performance, high energy formula containing oxytetracycline for better health and faster growth with Instant Plus for easier mixing and more efficiency.

EASTERN CROWN INC.

SPECIAL Baker's Dozen Buy 12 - Get One Free Until Dec. 31, 1994