

## Estimated Daily Livestock Slaughter

Under Federal Inspection  
September 28, 1994

	CATTLE	CALVES	HOGS	SHEEP
WEDNESDAY (EST)	129,000	5,000	358,000	19,000
WEEK AGO (EST)	127,000	4,000	361,000	18,000
YEAR AGO (EST)	124,000	4,000	355,000	19,000
WEEK TO DATE (EST)	384,000	14,000	1,061,000	55,000
SAME PD LT WK (EST)	374,000	13,000	1,068,000	52,000
SAME PD LT YR (ACT)	371,000	13,000	1,048,000	56,000

PREVIOUS DAY ESTIMATED TUESDAY STEER AND HEIFER 103,000, COW AND BULL 26,000.

### St. Louis Cattle, Hogs

Springfield, Il.

Monday, September 26, 1994

NATIONAL STOCKYARDS, ILLINOIS CATTLE AND CALVES 550. COMPARED TO LAST MONDAY SLAUGHTER STEERS AND HEIFERS MOSTLY 1.50 HIGHER EXCEPT HOLSTEIN STEERS STEADY. COWS FIRM TO 1.00 HIGHER. BULLS STEADY. SUPPLY MAINLY CHOICE AND MIXED SELECT CHOICE STEERS AND HEIFERS. LIGHT SUPPLY HOLSTEIN STEERS. BARELY 10% COWS.

SLAUGHTER STEERS: CHOICE 2-4 1075-1350 LBS. 63.50-65.00, 2-3 1125-1325 LBS. 65.00-65.50; MIXED SELECT AND CHOICE 2-3 950-1250 LBS. 60.50-63.50. SELECT 2-3 900-1275 LBS. 57.00-60.50. HOLSTEIN STEERS FEW HEAD CHOICE 2-3 1200-1400 57.00-58.00. MIXED SELECT AND CHOICE 2-3 1075-1350 LBS. 54.00-57.00; SELECT 2-3 1025-1300 51.00-54.00.

SLAUGHTER HEIFERS: CHOICE 2-4 900-1200 LBS. 62.50-64.00; 2-3 925-1250 LBS. 64.00-64.50. COUPLE PACKAGES 65.00. MIXED SELECT AND CHOICE 2-3 850-1150 LBS. 59.50-62.50; SELECT 2-3 825-1125 LBS. 56.00-59.50.

MIXED STEERS AND HEIFERS: CHOICE 2-4 1000-1225 64.00-65.00. SLAUGHTER COWS: BREADING UTILITY AND COMMERCIAL 2-4 39.00-41.00. HIGH YIELDING BREAKING UTILITY 41.00-42.00. CUTTER AND BONING UTILITY 1-2 41.00-42.00; HIGH YIELDING CUTTER AND BONING UTILITY 1-2 42.00-44.00, FEW UP TO 45.00, CANNER AND LOW CUTTER 1-2 36.00-40.00, SHELLY CANNER 1-2 33.00-36.00.

BULLS: YIELD GRADE 1-2 1150-1700 LBS. 50.00-56.00; INDIVIDUAL YIELD GRADE 1 AT 57.00.

THIS REPORT IS A SERVICE OF THE ILLINOIS DEPARTMENT OF

AGRICULTURE LIVESTOCK AND GRAIN MARKET NEWS SERVICE, SPRINGFIELD, IL. (217) 782-4925.

### Dewart Livestock

Dewart, Pa.

Monday, September 26, 1994

Report Supplied by PDA

STEERS: 50.00-60.00.  
HEIFERS: 50.00-59.00.  
GOOD COWS: 42.00-48.00.  
CANNERS AND CUTTERS: 38.00-42.00.  
BULLS: 1 AT 50.00.  
VEALS 90-190 LBS. 99.00-195.00, 70-90 LBS. 50.00-99.00.  
HOGS: 32.00-34.25.  
SOWS: 23.00-28.00.  
FEEDER PIGS: 15.00-25.00 PER HEAD.

### Jersey Shore Livestock Market, Inc.

Auction every Thursday  
at 4:00 p.m.

Jersey Shore, Pa.

Report supplied by Auction

Thursday, September 29

RETURN TO FARM CALF 80.00-170.00.

GOOD VEAL: 50.00-79.00.  
COMMON VEAL: 20.00-40.00.  
SELECT STEERS: 59.00-62.25.  
COMMON STEERS: 45.00-58.00.  
COMMERCIAL COWS: 42.00-45.00.  
CANNERS-CUTTERS: 37.00-42.00.  
SHELLS: 32.00-36.00.  
CHOICE HEIFERS: 60.00-62.00.  
SELECT HEIFERS: 55.00-59.00.  
COMMON HEIFERS: 44.00-54.00.  
GOOD FEEDERS: 54.00-68.00.  
COMMON FEEDERS: 35.00-53.00.  
BULLS: 48.00-53.00.  
GOOD HOGS: 34.00.

### Leesport

### Livestock Market

New Wilmington

September 28, 1994

CATTLE 294...PDA... Supply included  
72 feeder cattle ..sl. steers .50 to 1.00 lower, cows mostly 2.00 lower. STEERS:

Choice 1035/1380 lbs. 62.00-65.00, High Select and Low Choice 1080/1270 lbs. 61.00-62.50, Select 56.50-60.50. HOLSTEINS: High Choice and Prime 1235/1465 lbs. 58.25-60.75, Choice 1145/1655 lbs. 55.00-58.75, Select 51.50-55.75, Standard 47.25-52.00. HEIFERS: Choice 1005/1235 lbs. 61.00-63.75, few Select 55.00-57.00, few Standard 50.50-51.50. COWS: Breaking Utility and Commercial 42.75-44.50, Cutter and Boning Utility 41.00-43.50, Canner and Low Cutter 35.00-41.75. Shells down to 20.00. BULLOCKS: few Select 53.75-58.00. BULLS: Yield Grade No. 1 1440/2330 lbs. 52.00-57.50, few No. 2 990/1220 lbs. 42.75-50.50. FEEDER CATTLE: Steers: Large Frame No. 2 485/840 lbs. 50.00-59.00, few to 65.00, Medium Frame No. 1 320/715 lbs. 60.00-85.00; Heifers: Medium Frame No. 1 270/775 lbs. 50.00-57.00, one 82.00, Large Frame No. 2 275/465 lbs. 57.00-71.00; Bulls: Medium and Large Frame No. 1 300/450 lbs. 77.00-80.00, Large Frame No. 2 200/540 lbs. 61.00-75.00.

CALVES 155. Holstein bulls steady to 4.00 lower, Holstein heifers mostly 10.00 higher. VEALERS: one Choice 190 lbs. 95.00, few Good 160/175 lbs. 77.00-81.00, Standard and Good 80/120 lbs. 52.50-61.00, Utility 50/100 lbs. 40.00-55.00. RETURNED TO FARM: No. 1 Holstein bulls 90/130 lbs. 90.00-112.00, few 120.00, No. 2 80/120 lbs. 60.00-95.00; No. 1 Holstein heifers 80/120 lbs. 187.50-215.00, few 225.00, few No. 2 70/120 lbs. 85.00-165.00. Few beef cross bulls and heifers 90/110 lbs. 80.00-137.50.

HOGS 217...Barrows and gilts steady to .50 lower, sows steady to 1.00 lower. BARROWS AND GILTS: US 1-2 215/255 lbs. 33.25-34.75, lot 35.25, US 1-3 220/250 lbs. 32.00-33.50, US 2-3 260/275 lbs. 32.00-32.75, US 1-3 190/210 lbs. 31.50-32.50. SOWS: US 1-3 335/450 lbs. 23.00-25.00, 500/680 lbs. 25.00-27.50, Medium 310/515 lbs. 14.00-20.00. BOARS: 250/860 lbs. 20.50-23.25.

FEEDER PIGS 170...US 1-3 20/30 lbs. 72.00-80.00, 30/40 lbs. 55.00-65.00, 40/66 lbs. 51.00-60.00. --- per cwt. US 1-3 15/20 lbs. 18.00-20.00. --- per head.

Lancaster Farming, Saturday, October 1, 1994-A19

SHEEP 54...Slaughter lambs: High Choice and Prime 70/115 lbs. 75.00-89.00, Choice 80/120 lbs. 67.50-76.00, few 45/75 lbs. 87.50-107.50. Slaughter sheep: 25.00-53.00.

GOATS 9...Few Medium 39.00-52.50, few Small 32.50-57.50. --- per head.

NER & LOW CUTTER 35.00-43.00; SHELLS 35.00 & DOWN. BULLS: YIELD GRADE 1 1500#-2000# 48.00-60.00; YIELD GRADE 2 1000#-1400# 50.00-56.00.

FEEDER STEERS: M&L-1 300-500# 60.00-70.00; 250-280# 65.00-92.00, M 600-900 55.00-72.00. HEIFERS M 1&L-1 300-500# 55.00-75.00; L-1 400-650# 50.00-71.00. BULLS M&L-1 300-620# 58.00-80.00.

CALVES: VEAL... PRIME 90.00-95.00; CHOICE 80.00-88.00; GOOD 50.00-77.00.

FARM CALVES: #1 HOLSTEIN BULLS 90-120# FEW 85.00-100.00; #2 HOLSTEIN BULLS 80-100# FEW 55.00-90.00; BEEF X BULL&HFRS./HD. 60.00-100.00.

HOGS: BARROWS & GILTS #1-2 210-255# 38.50-44.50; #2-3 255-280# 32.00-36.50; SOWS #1-3 300-500# 20.00-35.00.

FEEDER PIGS: 1-3 25-35# 10.00-22.00/HD.

LAMBS: HIGH CHOICE 55-75 LBS. 50.00-70.00; CHOICE 90-105# 55.00-67.00; FEEDER LAMBS GOOD 50.00-62.00; SHEEP 20.00-40.00.

GOATS: LARGE 40.00-90.00/HD.; MEDIUM 30.00-44.00/HD.; SMALL 10.00-25.00/HD.

HORSES: 50.00-70.00, PONIES 20.00-45.00.

### Belleville Livestock Auction

BELLEVILLE, PA

September 28, 1994

CATTLE 224. SUPPLIED BY THE AUCTION. COWS: Breaking Utility and Commercial 39.50-42.50, Cutter and Boning Utility 39.00-44.00, Canner and Low Cutter 32.00-39.00. Shells down to 25.00. BULLS: Yield Grade No. 1 1100/1500 lbs. 48.50-50.60. FEEDER CATTLE: Steers: 300/500 lbs. 65.00-77.00; Heifers: 300/500 lbs. 50.00-62.00; Bulls: 300/500 lbs. 50.00-58.00.

CALVES 120. VEALERS: Standard and Good 80/100 lbs. 45.00-55.00, Utility 50/75 lbs. 40.00-48.00. FARM CALVES: No. 1 Holstein bulls 100/110 lbs. 80.00-110.00, No. 2 85/95 lbs. 57.00-85.00; No. 1 Holstein heifers 90/110 lbs. 102.50-200.00.

HOGS 52...BARROWS AND GILTS: US 1-2 230/260 lbs. 33.50-35.60, US 2-3 200/280 lbs. 30.00-33.00. SOWS: US 1-3 400/600 lbs. 25.00-30.50.

FEEDER PIGS 279...US 1-3 12.00-36.00. --- per head.

SHEEP 57...Slaughter lambs: Choice 75/110 lbs. 60.00-70.00, 50/70 lbs. 58.00-65.00. Slaughter sheep: 28.00-35.00.

GOATS 27...Large 50.00-80.00, Large Kids 30.00-46.00, Small Kids 15.00-31.00. --- per head.

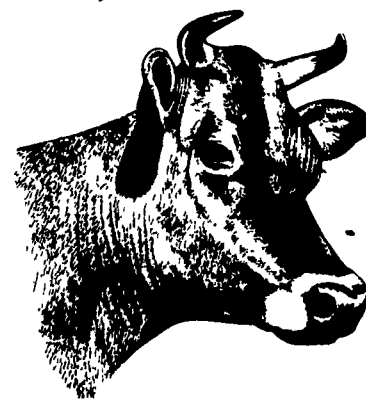
### Pennsylvania Livestock Auction

Waynesburg, Pa.

Thurs., September 29, 1994

Report Supplied by Auction

CATTLE: SL. COWS: UTILITY & COMMERCIAL 43.00-47.50; CUTTER & BONING UTILITY 37.00-47.00; CAN-



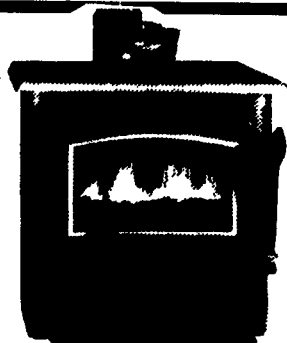
See the New  
"STRATFORD CLASSIC" Coal Stoves  
at

DUSSINGER'S  
QUALITY STOVES

2533 Old Phila. Pike, Rt. 340, Smoketown, PA  
3 miles east of Lancaster  
Tue., Thurs., & Fri. 10-8;  
Wed. & Sat. 10-5

\* See our beautiful new Wood & Gas Stoves.

(717)397-7539



## ROHRER'S Quality SEEDS

FOR OVER 75 YEARS

- Arrow Alfalfa
- Apollo Supreme Alfalfa
- Agressor Alfalfa
- Alfagraze Alfalfa
- Redland II Red Clover
- Ladino Clover
- Birdsfoot Trefoil
- Toro Timothy
- Climax Timothy
- Cert. Potomac Orchard Grass
- Pennlate Orchard Grass
- Cert. Palaton Reeds Canary Grass
- Perennial Ryegrass
- Tetratolid Perennial Ryegrass
- Bastion Tetratolid Perennial Ryegrass
- Highland Pasture Mix
- Horse Pasture Mixture
- Triple Purpose Hay & Pasture Mixture
- Waterway Grass Mix
- Special Hay Mixture
- Hairy Vetch



Seed Grains

- Cert. Pennco Barley
- Cert. Wysox Barley
- Cert. Twain Wheat
- Cert. Sawyer Wheat
- Winter Rye

More Information

Upon Request

Monday-Friday 7:30 AM-5 PM

HOLLAND EXTRA  
BALER - BINDER  
TWINE

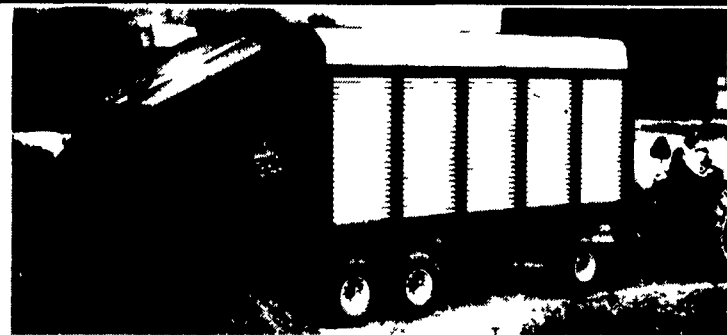
P.L. ROHRER & BRO., INC.

SMOKETOWN, PA

PHONE: 717-299-2571

## MILLER PRO

Rear Unload & Combo Forage Boxes



- Model 5100 Rear Unload**
- 30 Second Mechanical Unloading
  - Automatic Rear Door
  - High Rear Door Hinge for Unobstructed Unloading
  - Unitized High Strength Steel Box

- Model 5100 Front/Rear Unload**
- All Features of Rear Unload Plus:
  - Independent Feathering Clutches for Metering Augers and Outfeed
  - Four Speed Front Unload - Enclosed Oil Bath Gear Box
  - Easy Direction Change by Simply Moving a Drive Coupler
  - Super Slippery Poly Clad Floor

Optional Miller Pro Running Gear  
■ Choice of models from 10 - 14 tons ■ Automotive-type steering ■ C-Channel design for best stability and tracking

Miller Pro Retail Financing  
Provides customers with great rates and broad payment options

Also from Miller Pro:  
Front Unload Forage Boxes, Dump Boxes,  
Crop Sprayers, Running Gear, Rotary Rakes,  
Hay & Grain Elevators...and More!

MILLER  
ST. NAZIANZ  
1-800-247-5557

Profit Making Products for the Professional Farmer