

**PUBLIC AUCTION**

**VALUABLE REAL ESTATE**

**EPHRATA TOWNSHIP**

**72 ACRE LIMESTONE DAIRY FARM**

**SATURDAY, OCTOBER 22 11 A.M.**

LOCATION: 531 Springville Rd., Ephrata. Take Rt. 272 N. from Ephrata to Schoeneck Rd. turn left to Springville Rd. at Mennonite Church turn left to farm on left. Ephrata Twp., Lancaster County.



Real Estate consists 72 Acres M/L with approx. 60 acres tillable, balance pasture w/stream. Zoned agricultural. Dwelling is 1 1/2 Story limestone & frame w/1st floor large kitchen, living rm. & family rm., laundry & 1/2 bath. 5 Bedrooms & full bath on 2nd floor. 15" window sills, built-in corner cupboard & chair rail. Oil hot water baseboard heat, spring fed water supply. **BARN:** Limestone & frame bank dairy barn w/38 tie stalls heifer & dry cow pens, Stave 16x65 Silo w/unloader and Stave 10x45 Silo. Milk house, Patz barn cleaner, Harvester Slurrystore System 42' Dia. x 14. Attached 4-car garage. Frame corn barn, 38' x 100' masonry machinery building w/built-in heifer pen on end. Over 4000' frontage on Springville & Pleasant View Rds. For Farm Plotting & Details, Call Auctioneers 717-733-1006. Inspection By Appointment or Open House - Sats., Oct. 8 & 15 from 1 to 4 PM.

NOTE: Farm is ready to go. Productive limestone land, pasture w/good stream. Convenient location w/plenty of road frontage. Zoned Agriculture. Don't miss this Dairy Farm Auction! Auction 11 A.M. Terms - 10% Down, Balance 3/1/95.

Terms By: **Ellen M. Fox**  
(Mrs. Henry P. Fox) #717-733-6512  
Michael P. Kane, Esquire

Auction Conducted By:  
Randal V. Kline, Lloyd Kreider  
Roy E. Good, Jr., Auctioneers  
Lic. #499L #717-733-1006



**KLINE, KREIDER & GOOD**

**AUCTIONEERS**

**PUBLIC SALE**

**57 ACRES LIMESTONE-IRONSTONE DAIRY FARM**

**SAT., OCTOBER 15, 1994**

**1:00 P.M.**

Located at 2183 Sheep Hill Rd., East Earl Twp., Lancaster Co., PA. From Blue Ball, take Rt. 322 east, 1-1/2 miles, turn right onto Sheep Hill Rd., proceed 1/4 mile to sale on left.



A certain tract of land consisting of app. 57 acres, 45 acres tillable, balance in pasture and woodland with stream. Erected thereon a:

**NINE ROOM STONE DWELLING**

Large kitchen with built-in cabinets, fireplace. Living room with wall to wall carpet, fireplace. Family room. Enclosed porch. Full bath. Laundry. Utility room. Four bedrooms with wall to wall carpet. Closets. Attic storage. Partial basement. Oil hot water baseboard heat with summer-winter hook-up. Shade trees. Shrubby.

**32 STANCHION FRAME TWO BAY DAIRY BARN**

with 46'x50' loafing shed attached. Several box stalls. Three year old barn cleaner. 10'x55' cemented lagoon. Cement block milk house, stainless steel pipeline, 800 gallon bulk tank, new vacuum pump.

**32'x90' FRAME TOBACCO SHED** converted to heifer barn and equipment storage.

**2 - 16'x50' STAVE SILOS** with unloaders. 80' cement bunk.

200 AMP service with center pole. Spring fed pond.

NOTE: The purchaser has the option to rent 18 acres of adjoining farmland from the Zimmermans.

OPEN HOUSE: Saturdays, Sept. 24 and Oct. 1 & 8 from 1:00 to 4:00 p.m.

TERMS: 10% down day of sale, balance March 1, 1995.

Mark James, Atty.

Sale For:

**Ivan S. and Ruth Zimmerman**

717-354-5826

Auctioneers  
Nevin Martin and Sons  
AU1078L

Not Responsible For Accidents

**Public Auction Register**

Closing Date Monday 5:00 P.M.

of each week's publication



**PUBLIC AUCTION**

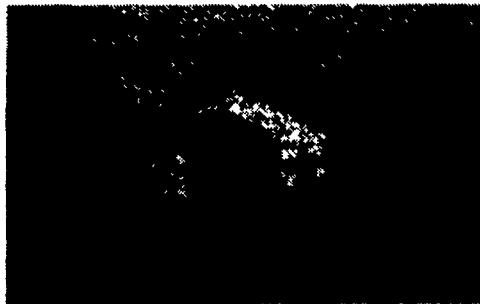
**OF VALUABLE REAL ESTATE  
HOUSEHOLD GOODS,  
ANTIQUES, RIDING MOWER,  
TOOLS & CAR**

**SAT., OCT. 8, 1994**

**Sale At 9:00 A.M.**

**Real Estate at 2:00 P.M. Car at 2:30**

Located: Turn off Oregon Pk., Rt. 272, at Landis Valley Mennonite Church on Valley Rd., turn right on Kissel Hill Rd., go 1 mile north to 190 East Oregon Road (Rt. 722), Manheim Twp., Lanc. Co., PA.



**Lot - 25,500 Sq. Ft. M/L**

Brick & vinyl siding ranch type dwelling w/large 2-car garage, electric door opener, work space. Basement entrance in garage.

Large eat-in kitchen w/built-in cabinets, Whirlpool, dishwasher, electric stove, Frigidaire refrigerator, laundry hookup w/Maytag washer & dryer, built-in vanity, desk & bookcase & pantry cupboard, closet, ceiling fan, dining room, large living room brick fireplace, built-in brick planter, hallway w/closet, 3 bedrooms w/closets, full bath off master bedroom, large walk-in cedar closet, full bath, hardwood floors w/wall to wall carpet.

Full basement w/brick fireplace, electric heat in ceiling, electric water heater, water softener, well w/pressure system, on site sewer. Public water available. 200 amp service.

For appointment call 569-0772. 10% down day of sale, balance on or before Jan. 11, 1995.

**ATTENTION ATTENTION**

**FURNITURE SOLD AT 9:00 A.M.**

Dropleaf table w/8 Boards, Old Small Raised Panel Cupboard, China Closet, Like New Sofa Bed, 2 Pc. Living Room Suite, Inlaid Round Table, Chest of Drawers, Daybed, Duncan Phyfe Drum Table, Queen Anne Wing Back Chair, Wooden Tea Cart, Occasional Chairs.

Wood Highchair, 5 pc. Kitchen Set Formica Top Table w/One Board; Swivel Chairs w/Casters, Quilting Frame, Deacon Bench, Old Mitered Bench, Porch & Lawn Furniture, Folding Chairs, Singer Sewing Machine, G.E. Microwave, Small Appliances, Floor & Table Lamps, Doll Highchair, Doll, Winross Trucks - Weaver, & Herr's Milk, 30 lb Martin's Dairy Milk Can, Old Blacksmith Box, Shadow Box, Pictures, Mirrors, Large Beveled Mirror, Old Brass Hall Light, Luggage, D.P. Pulse 2600 Strider, Bedding, Old Applique Tulip Quilt, Fancywork, Linens.

**GLASSWARE** - Ironstone Fitcher, 10 Ironstone Plates & 5 Cups, Decorated Ironstone Platter, Flow-blue Plate, Glass Basket, Frosted Chicken-on-Nest, Dinner Set, 20 Pink Dishes, Compote, Relish Dish, Fruit Dishes, Egg Plate, German China, Milk Glass Ribbon Plate, Cake Stand, 12 Glasses & Sherbets w/Cranberry Edge, Hall Sugar & Creamer, Pressed Glass, 12 Goblets, Brass Bells, Brass Kettle, Sitting Bull Dog Bank, Roger Bros. Flatware - Service for 14, Aluminum Trays, Crocks, Cooking Utensils.

**LAWN & GARDEN SUPPLIES** - Dixon 361 - 12 H.P. Riding Mower w/Bagger, Simplicity 870 Snowblower, Lawn Seeder, Garden Tools, Picnic Table & Bench, Metal Sprinkling Can.

**TOOLS** - Black & Decker Tools - 1/4" & 1/2" Elect. Drills, Circular & Jigsaw, Cordless Drill & Bits, Electric Hedge Clippers, Buffer, S.K. Socket Set, Hand Tools, Wood Pulleys, Bucksaw, Concrete Tools, Large Float, Adze, Metal Toolbox, Old Level, Carpenter Toolbox, Workbench, Metal Shelving, 24' Aluminum Extension Ladder, 5' Aluminum Stepladder, Hi Pressure Washer.

**COINS** - Silver Dollars 1890, 1885, 1922; Silver Halves, 1870 Dime, \$2 Bill.

**GUNS** - Champion 12 Gauge Hammer, 22 Marlin Bolt Action.

**CAR** - 1988 FORD TAURUS, 4-Door, Tinted Glass, Full Power, Automatic, 3.0 V6 Engine, A-Title, 30,000 Miles, 1913 Porcelain License Plate, many other items not mentioned.

Terms by

**JOHN M. & EMMA N. LANDIS**

Aucts.  
Robert E. & Jeffrey R. Martin, 656-7770  
AU000580L  
Randall L. Ranck  
Michael L. Martin, App.  
Edward L. Miller, Atty.

Lunch Available  
No Out of State Checks

SAT. OCT. 22 - 9AM, Antiques, Household, Lawn & Garden. Located In Selinsgrove, Snyder Co., Pa. In Selinsgrove Turn Off Market St. At CVS Pharmacy Store Onto University Avenue And Travel 7/10 Of A Mile To Auction Site. Estate Of, Marie C. Gaugler. Roger A. Lauver & Dean E. Longacre, Aucts.

SAT. OCT. 22 - 9AM Sell out of Lawn Mower Business, Pine Grove, Pa. For

Mr. John Brown. Dwight D. Miller, auct.

SAT. OCT. 22 - 9AM Real estate, antique furniture & collectibles, household goods, 8N tractor, riding mower, gun, yard, garden & hand tools. Located at 866 Small Valley Rd., Wayne Twp., Halifax, Pa. From Halifax take Rt. 225 approx. 8 miles to Mountain House Rd., South on Mountain House Rd., approx. 3/4 miles to Small Valley Rd. Turn right, go

approx. 1/4 mile to sale. Esther Snyder, Hilda Shertzer, Lee Warfel, Margie Warfel, owners. David Deiber, Ed Shoop, aucts.

SAT. OCT. 22 - 9AM Gas engines, antiques, collectibles, butcher equip, tools of the late Merle Dellinger. Early Amer. Steam Eng. Soc. Showgrounds, S. York Co., near Windsor, Pa. From I-83 exit 7 take Rt. 124 E (E. Prospect Rd.) 7.5 mi. Turn right onto Manor Rd. for 1.3 mi. to show grounds. Lucille Dellinger, owner. Melvin Haines, Ralph Brenneman, Russell Wright, aucts.

SAT. OCT. 22 - 9AM, Household Goods, Antiques & Coins. Located In The Village Of Intercourse At 6 Queen Road, Just Off Rt. 340, Across From Best Western Motel, Lanc. Co., Pa. Terms By, Mary Z. Stoltzfus. Robert E. & Jeffrey R. Martin, Aucts.

SAT. OCT. 22 - 9AM Antique & household goods, tools, Lehn miniature chest. At 355 E. 28th Div. Highway (Rt. 322) Brickerville, Lanc. Co., by Miriam H. Ulrich. Horst aucts.

SAT. OCT. 22 - 9AM, Leroy G. Templin Sr. Estate Home & Shop On An Acre. 85 Ram Pickup 11,600 Miles, Power Tools & Clean Furniture. Located 1747 Maple Dale Rd., Elizabethtown, Conewago Twp., Dauphin Co. Call 653-8871 For Directions. Keller & Keller Aucts. K.C. Concessions- Food.

SAT. OCT. 22 - 10AM 4 parcels totaling 65 acres in Lanc. Co. Pequea Twp. Sanford Alderfer Auction Co.

SAT. OCT. 22 - 10AM Real estate, personal prop. at the intersection of Rt. 10 & rt. 23 Morgantown, Caernarvon Twp., Berks Co. By Caernarvon Lodge.

SAT. OCT. 22 - 10AM Ethel M. Hottenstein, 15.95 acre farmette, household goods, antiques, farm equip. Located S. of Kutztown turn off Rt. 222 at Kirbyville Hotel onto Richmaiden Rd., go 4 mi. to farm in Richmond Twp., Berks Co., Pa. Ralph W. Zettlemoyer Auction Co.

SAT. OCT. 22 - 10AM Calves. Shenandoah Valley of Va. & Potomac Highlands of WV South Branch Stockyards, Moorefield, WV.

SAT. OCT. 22 - 10AM, Mel's Stable Selected Consignment Horse Sale Located At 834 Wallace Rd., New Holland, Pa From Rt. 23 in New Holland, Go South On Brimmer Ave Go 2 Miles South On New Holland Road To Hill Rd Turn Left On Hill Rd. Proceed 1.2 Miles To Sale On The Left From Rt. 340 East Of Intercourse Take New Holland Rt. 25 Miles to Hill Rd., Right On Hill Rd. to Sale On Left Mel Hoover, Auctioneer.

**PUBLIC AUCTION  
LIKE NEW FARM EQUIPMENT  
& SHOP EQUIPMENT  
THURS., OCT. 6, 1994**

**9:00 AM**

**PARKLAND FARMS, INC. -  
JACK ANDERSON**

LOCATED: North of East Berlin, PA on Rt. 194 to Red Mount Church, turn west go 1 mile to Stoney Point Road, turn left, go 1 4/10 mile to farm on right. Watch for Signs or South of Dillsburg, PA to Red Mount Church and turn west - then follow directions above.

John Deere 4455 Tractor w/4 wheel drive, 958 Hrs., Power Shift, Cab, Air, Heat, Dual Remote, Front Weights.

John Deere 4255 Tractor w/Cab, Air, Heat, 1440 Hrs., Power Shift, Dual Hydraulic Case 580K Backhoe & Loader, 4 Wheel Drive, 1398 Hrs., 2 Buckets, Full Cab Cat Tow Motor - T40B - Propane

1961 Chev. 1/2 Ton Pick-up - Shed Kept. (Formerly President Eisenhower's)

J.D. 2810 - 5 Bottom 20" Auto Reset Plow Semi Mtd., J.D. 635 - 15' Transport Disk - Cushion Mtd., J.D. 7 Tooth Soil Saver - Pull Type, Brillion 14' Cultimulcher - 1 Year Old, Brillion PDT 16' Transport Cultipacker, J.D. 7200 - 6 Row Narrow Corn Planter w/Monitor, Dry Fertilizer, Disc Openers & Insecticide Boxes; J.D. 8300 Double Disc Grain Drill - 23 Disc w/Press Wheels, 3 Ton Auger Driven Tender, GBM Lime & Fertilizer Spreader w/Hydraulic Press Wheel 4 Ton - PTO; New Holland 311 Baler w/Super Sweep & Thrower, 3 Dutch Boy 18' Thrower Bodies w/10 Ton Wagons, Danhuser 3 pt. Log Splitter, J.D. Front Weights & Cylinders, J.D. #1518 - 15' Batwing Rotary Mower, 30' Belt Elevator w/Transport & Electric Motor, International Roto Bar Rake, Steel Grain Sides for 22' Body, Fuel Tank & Pump - Portable for Pick-up Truck, Enclosed Snowmobile Trailer for 4 Sleds, Leaf Vacuum & Trailer, Moisture Tester, Wheelbarrow, 200 Plastic Round Waterers or Feeders, Pond Fountains w/Lights, Topper for Pick-up, House Shutters, Storm Doors & Windows, Tow Chains & Misc. Farm Items.

30,000 BROCK GRAIN BIN w/FALSE BOTTOM & FAN

**SHOP EQUIPMENT**  
Speedaire 5 hp. Air Compressor - Vertical, Dayton Power Hacksaw, Bridgeport Drill Press w/Vise, Bench Drill Press, Airco Mig Welder, Acetylene Torch & Cart, NAPA Air Floor Jack, Drydene Parts Washing Tank, 2 Battery Chargers, Heavy Duty Jack Stands, Plasman Cutter, 2 Lincoln Welders, Bench Grinders, Vises, Porta Power, Hydraulic Jacks, Belt Sander, Parts Bins, Electric Cords & Electric Wire, Stand w/Portable Light, Large Metal Break, Drill Bit Sharpener, 2 Shop Vacuums, Creeper, 17 1/2 Ton Drill Press, Clausing Lathe w/Traveling Feed Table, Router, Paint Compressor, Vanities & Mirrors, Stihl Chain Saw & Other Misc. Items.

AUCTIONEER'S NOTE: This farm equipment and shop equipment is all in New Condition, equipment all kept inside and nearly new, shop equipment is in new condition, owner retiring from farming and all sold to the highest bidder.

TERMS: CASH OR GOOD CHECK

SELLER:

**Parkland Farms, Inc.**

**2200 Stoney Point Road**

**East Berlin, PA**

**Jack Anderson**

AUCTION CONDUCTED BY:

**Rentzel's Auction Service**

**Emigsville, PA**

**764-6412**

**PA Lic. #761**

**PUBLIC AUCTION**

**OF VALUABLE  
ANTIQUES -  
FURNITURE -  
PERSONAL  
PROPERTY -  
DISHES - GLASS,  
ETC.**

**ON SATURDAY,  
OCT. 15, 1994  
AT 9 A.M.**

At Springetts Fire Co. Social Hall, 3013 E. Market St., York, Pa.

PREVIEW SHOWING:  
Fri. Eve. Oct. 14, 6:30 to 8 P.M.

TERMS: Cash or Approved check. No out of state checks.

**BRIAN L. GILBERT,  
LIC. #2256  
JACOB A. GILBERT,  
LIC. #336  
AUCTIONEERS**