

JD 50 NFE, PS, live PTO, good rubber. 717-435-2271.

JD 5440 chopper, 4WD, 3-30" & 7', excellent. Can Finance. \$31,900. Larry Stalter "The Chopper Man" 1-800-248-2151

JD 643 corn head, done 600A, \$11,000 OBO; NI 2R corn picker, \$7000; Peerless ear corn roller mill, 10x20, 540 PTO, 4 years old, \$8500 OBO; Badger Model BN103 manure pump, 12", \$500 OBO. 610/869-8745.

JD 68 auger wagon; Gehl 910 silage wagon; Gehl 72 flail chopper; Gehl 800 harvester. All very good condition. 610-932-0759.

JD 7000 Corn Planter, 430 Plateless Minimum Till Coulter, Insecticide Markers, Hydraulic Cylinder. No Fertilizer or Monitor. Very Good Condition \$2850. (410)778-0408.

JD 7000 planter 4x30 dry, \$4200; JD 1710 mulch tiller, 11-shank, field ready, \$3990. 304/822-3298, 304/822-3112.

JD 4440 quad range, SGB, 1050 hrs., like new. 717-464-2874.

JD 4430, SGB, Quad, WTS, Very Nice, Best Offer. (302)378-4726.

JD 300 corn husker; Kill Bros., McCurdy gravity wagons, w/JD gear; Little Giant 42' elevator; 10 1/2' Bush Hog. 304-725-5323.

JD 300 corn picker w/343 corn head, \$3600. 717/469-0033 evenings.

JD 3020, gas, tricycle, 2 outlets, syncro, \$4,900. 410-833-9091

JD 375 round baler; JD 730 diesel w/factory WFE and flat fender. 717/242-4425.

JD 3940 chopper, both heads; ex JD 714A wagon, good; Case IH 56 blower, new. 717-284-2587.

JD 400 lawn tractor w/60" mower, weights & 3 pt., 800 hrs., nice, \$3,400. 410-833-9091

Lancaster Farming, Saturday, October 1, 1994-D11

Lincoln SP100 wire welder, complete w/hand gun, 100DC AMPS single phase, 115V, \$400 OBO. 717-687-0808.

Little Giant elevator, model 21, 26'L, 4'ext., 3/4hp, \$1200. 717-425-3238 evenings.

Little Giant drag elevator, almost new, \$900 offer. Le-high Co. 610-767-5829.

LOADER ATTACHMENTS New Du-Al, fits all makes & models, 20% off. 410-833-9091

LOADER ATTACHMENT JD 148, excellent condition w/brackets, \$2,800. 410-833-9091

LOADER ATTACHMENT IH 2000 w/bucket, very clean, \$1,500. 410-833-9091

LOADER TRACTOR FORD 6610, 4x4 w/777 loader, new engine, \$15,000. 410-833-9091

LOADER TRACTOR IH 424, gas w/Kelly 600 loader, runs well, no power steering, \$3,700. 410-833-9091

LOADER TRACTOR JD 300, diesel w/reverser, weight box, new rubber, runs excellent, \$5,300. Also available gas model, \$4,800. 410-833-9091

**SPECIAL OF THE WEEK**



MF 1135 Cab/Air, 18.4x38, 12 Speed M.P. \$9,000.00

- IH 986, cab, air.....\$11,000
- IH 806, diesel, 3 pt.....\$ 5,200
- IH 686, 310 motor w/TA.....\$ 7,900
- IH 685 w/loader, shuttle shift.....\$14,250
- IH 574, diesel.....\$ 6,500
- IH 186 hydro, new motor, sharp.....\$17,500
- Case 2096, cab, air, power shift, sharp.....\$18,500
- Case 1494, cab & air, 1,300 hrs.....\$14,500
- Case IH 885, 4x4, cab, air, loader.....\$24,500
- MF 1135, cab, air, multipower.....\$ 9,000
- MF 1100, diesel, multipower.....\$ 5,900
- MF 699, 2WD.....\$11,000
- MF 699, 4WD.....\$15,500
- MF 670, 4x4, cab, air, 238 loader.....\$16,000
- MF 399, 4x4 w/loader, 1,000 hrs.....\$26,500
- MF 390 w/loader.....\$16,900
- MF 298, multipower, ROPS.....\$10,000
- MF 275, diesel, multi-power.....Coming In
- White 2-75.....\$ 9,500
- White 2-70, 4x4, cab & air.....\$ 8,900
- Oliver 1855 w/cab & new motor.....\$ 8,500
- JD 4450, quad shift, duals, weights, 1,300 hrs.....\$37,500
- JD 4450 4x4 Power Shift.....\$34,000
- JD 2950, 4x4, cab & air w/260 loader..\$28,000
- JD 2240 4x4 145 Loader.....\$11,000
- JD 4020, diesel, SR, 2 remotes.....\$ 8,000
- JD 2040 w/loader.....\$ 8,500
- Deutz DX110, 4x4, cab, air, loader.....\$14,000
- Deutz DX160, 4x4, cab, air.....\$14,000
- Same 4x4, 4 post, 130 h.p., 1988.....\$10,500
- Ford 8600.....\$ 5,600
- Ford 5600, diesel, low profile, turf tires.....\$ 6,500
- Ford 4630, 2WD, 129 hrs.....\$12,500
- Ford 1310, 4x4 w/belly mower, snow blower, 430 hrs.....\$ 8,000
- Case 1835C skid loader.....\$ 7,900
- Gehl 4610 diesel skid loader.....\$ 9,500
- JD 2 row potato digger.....\$ 1,200
- JD 8300 grain drill, double disc, press whls, 23 run.....\$ 1,900
- Taylorway 7' Soil Saver.....\$ 3,900
- Glenco Soil Saver, 7 Shank.....\$ 4,800
- (3) 12' Cultipackers.....\$ 700 to \$ 1,000
- JD 215 Disc, 14'.....\$ 2,300
- NH 411 Discbine.....\$ 6,200
- Case 12' chisel plow.....\$ 1,100
- MF 880 6x on land plow.....\$ 2,200
- MF 880 4 & 5 btm. reset plows.....\$ 1,000 & \$ 1,200
- JD 6 btm. rollover plow.....\$ 4,500
- 4-6-8 row Danish cultivator.....\$750 to \$ 1,200
- 24' Fold-up Danish Tine field cultivator w/level harrow.....\$ 1,800
- 6 Ft. 3 Pt. Rotary Mower.....\$ 850
- Vicon centipede rake.....\$ 650
- MF 15' Flex Head.....\$ 1,900
- MF Flex Head, UII 15'.....\$ 2,800
- MF Flex Head, UII Reel, 13'.....Coming In
- IH 7 Shank Auto Reset V Ripper.....\$ 4,900
- 18.4x38 & 20.8x38 duals.....\$ 1,000
- MF 540 combine w/SOLD x head.....\$ 9,000
- JD 4400 diesel combine.....\$ 3,000
- Gehl 99 silage blower.....\$ 850
- Badger silage blower.....\$ 500
- MF #33 Grain Drill SOLD.....\$ 800

Financing Available

**L & M BURKHOLDER**

Between Brownstown & Rothsville Ephrata, PA

Shop 717-859-6616

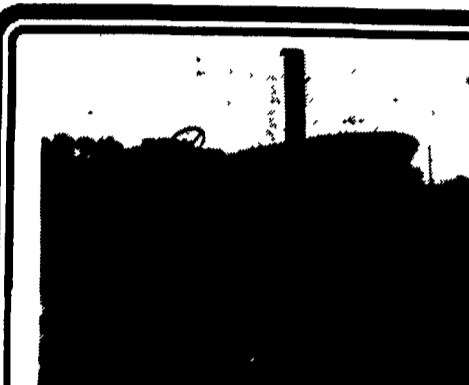
717-859-2960

717-859-2712

Mel (Residence)

Lloyd (Residence)

John Deere Backhoe \$1,200  
Case Backhoe \$900  
Call 1-800-345-2829  
Curry Supply Co. Curryville, PA



JD 4320 120 HP \$6,600



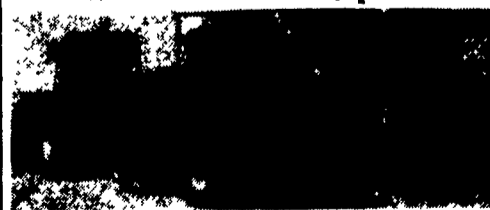
Ford TW20, Cab, 20.8x38 Radials \$8,500

- Same 130, CAH, 4WD, 130HP, 540/1000....\$7,000
- Fiat Allis 545B, Full Cab, Exc. Condition..\$12,000
- Ford TW20, Cab & Air.....\$8,300
- JD 4320, Fender.....\$6,700
- Toyota SDK8 Skid Loader, 1990, 1,100 Hrs. \$8,000
- CAT 955H, power shift, bad engine.....\$1,800
- NH 352 grinder mixer.....\$1,000
- NI 213 PTO Driven Manure Spreader.....\$800
- 10' High Clearance Chisel Plow, Gauge Whls \$500
- JD 2010 Utility, Gas, Good Condition.....\$3,500
- NH 411 Discbine.....\$3,000
- Woods 15' Batwing Mower, Good Cond.....\$3,500
- JD 930, Front Cut, Runs Good.....\$3,500
- Onan 1500 KW gas generator.....\$700

410-429-1927 or 410-857-7102

**Buy Proven Quality From Binkley & Hurst Bros. NOW!**

Mushroom Hay Growers- We Have A Large Square Bale In Stock For You  
**CASE INTERNATIONAL 8570**  
Imitated But Never Duplicated



Bale Size: 8570  
Cross section-in. 31.5x34.4  
Bale length-in. Up to 98

With Centralized Lube System  
Don't Wait Make Your Deal NOW!

BINKLEY & HURST BROS., INC.

111 Rothsville Station Rd. Lititz PA 17543

(717) 626-4705 1-800-487-2978

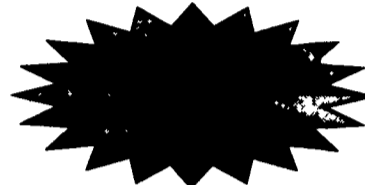


Ford 555, New Tires, Tight Machine \$12,500



310 Case Crawler Loader, Diesel \$3,500

CL20 Ford Skid Loader, Gas \$3,500

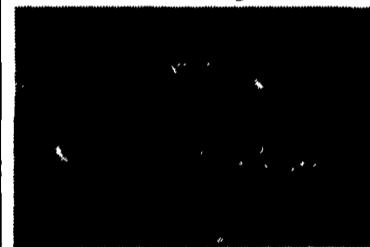


**We Buy Used Equipment**

Dull Equipment Co. 717-949-3451  
Ask For Lee or Dustin Let's Do Business & Be Friends

See **Degelman**  
**Binkley & Hurst Bros. For Quality Rock Pickers & Rakes NOW!**

REMOVE ROCKS BEFORE FALL SEEDING  
We Have 2 Models 6000 Rock Pickers Ready To Work  
1 Hyd. and 1 PTO Unit



Grated Hopper Bottom  
We use spring steel straps in the hopper instead of using mild steel. The hopper is engineered to bounce back in shape.

Hydraulic Drive  
The most popular drive on rock pickers is hydraulic which is standard on the 6000. We have incorporated a relief valve to take away the shock when disengaging the drive.

Flotation Tires  
The 16.5Lx16.1 flotation tires are standard equipment and are a must to reduce soil compaction.

may be all the picker you'll need!



Reel Assembly  
We are using the same reel as the proven Super Picker 6800. The three paddle reel has a large diameter, hard surfaced teeth and heavy duty paddles.

Swing Pole  
The manual swing pole is easy to maneuver in both working or transport position.

Solid Shaft Grill Tines with Replaceable Grill Tips.  
This modern grill is easier to maintain, has longer life giving you less down time. The unique grill provides five feet of clean sifting and virtually jamless performance.

The Signature 6000

Specifications

Model	Hopper Capacity	Grill Width	Tires	Drive	Min. H.P.	Max. H.P.	Paddles	Unloading Height	Weight	Transport Width
6000	2 cu. yds.	5'	16.5Lx16.1	Hydraulic	70 H.P.	120 H.P.	3 Paddle	43'	4800#	5'6"
	Length 14'	Height 6'6"	Hydraulic 3"x31"	Chain No. 80 Long Life	Hard Surfaced	Frame 6'x6" (1/4 wall)	Optional Rock guard	Ground Clearance 10"	Working Width 11"	

SEE BINKLEY & HURST FOR TRACTOR MOUNT DOZER BLADES



4600 & 5700 Series  
The Degelman 4600 & 5700 hydraulic angle Bulldozer Blades attach to both front wheel assist and two wheel drive farm tractors. They incorporate a clean looking, low profile design and are built strong with tough, heavy duty construction to achieve a dozer blade that's ready to tackle demanding farm jobs.

Ease of operation, built-in quality and the convenience of finger tip hydraulic angle control are only a few of the many features you'll appreciate.

**BINKLEY & HURST BROS. INC.**  
(717) 626-4705

133 Rothsville Station Rd. Lititz, PA 17543  
1-800-487-2978

