

# ABSOLUTE AUCTION

COMPLETE LIQUIDATION MIDWAY  
SUPERTHRIFT GROCERY STORE

**MONDAY SEPT. 26, 1994**  
AT 1:00 P.M.

LOCATED ON RT. 74 BETWEEN RED  
LION AND DALLASTOWN, PA

## FOOD SERVICE EQUIPMENT

FEDERAL 8' REF. BAKERY CASE  
CURVED GLASS FRONT (NEW), 8' SELF  
CONTAINED) SALAD BAR, TOLEDO  
SLICER, TOLEDO WRAPPER/PRINTER  
SCALE SYSTEM, GLOBE SLICER, FOUR 8'  
STAINLESS TABLES, 4 POLY TOP S/S  
TABLE, 2 SOUP KETTLES, 3 TOLEDO  
SCALES, DONUT SCREENS, CAKE PAN,  
MEAT TRAYS, PRIZER GAS CANDY  
STOVE, 4' SANDWICH UNIT, HOBART  
ELECT. RANGE, HOBART FRYER, 4x6  
EXHAUST HOOD, 2 ICE-O-MATIC 400 LB  
ICE CUBE MAKERS, CANDY BOWL,  
UTENSILS, GRINDMASTER COFFEE  
GRINDER, METRO SHELVING, & MORE  
ITEMS TOO NUMEROUS TO LIST!

## STORE SHELVING REFRIGERATION/DISPLAYS

300 LINEAL FT OF LOZIER/HUSSMAN  
GONDOLA SHELVING ASST. SIZES, 25'  
HILL 10 DOOR FREEZER, 48" HUSSMAN  
FROZEN FOOD CASE, 8' HILL SEAFOOD  
CASE, 36' HUSSMAN FROZEN CASE,  
SCHMIDT 3 DOOR MEAT COOLER, 2  
TRAULSEN 4DR/8DR REACH IN  
REFRIGERATORS, HUSSMAN WALL  
GONDOLA SHELVING, 24' BAKERY  
DISPLAY SHELVING, 48" MIRROR BACK  
PRODUCE CASES, HUSSMAN DAIRY  
CASES, MEAT CASES, DISPLAYS,  
ISLANDS & MORE!

## COMPRESSORS/OFFICE

6 HILL R502 COMPRESSORS, 4  
COPELAND, KRAM CONDENSERS,  
MOSLER 24x30x58 SAFE, FILE CABINETS,  
CARTS, SIGNS, ETC  
INSPECTION: 9 AM - 1 PM DAY OF AUCTION  
ONLY. NO OUT OF STATE CHECKS! ALL  
ITEMS SELL AS-IS WHERE-IS TO HIGHEST  
BIDDER, COMPLETE PAYMENT DAY OF  
AUCTION.

**AUCTION FOR  
SCRIVNER GROUP**



**KERRY PAE  
AUCTIONEERS**

Hamburg, PA  
(717) 363-3432

AU1367

## HOWARD COUNTY MACHINERY AUCTION ANNUAL FALL CONSIGNMENT SALE Howard County Fairgrounds West Friendship, Maryland **October 8, 1994,** 9:00 A.M.

Now accepting consignments of:  
Tractors and farm machinery: construction  
and landscaping equipment; lawn mowers;  
carpentry, plumbing and electrical tools; shop  
tools and equipment; building materials;  
lumber, windows and doors; trucks and  
trailers; etc.  
Consignments accepted at Fairgrounds  
October 4-7, 9:00 AM-5:00 PM  
Call now for items to advertise (evening calls  
preferred).

**Call: Sale Manager, Phil Gregory,  
(301) 924-2333 or 774-3444  
Auctioneer, Dennis Warfield  
(301) 489-4920**

## PUBLIC AUCTION

CONSIGNMENT SALE

**SAT., OCT 1, 1994 • 10:00 A.M.**

**TRUCKS, TRACTORS, COMBINES, FARM  
RELATED ITEMS, MISC. AND HORSE DRAWN  
EQUIPMENT**

LOCATION: Walters Farm 8 miles south of Dover,  
DE on U.S. 13 just north of Canterbury Light

Early Listings: IH 1586 cab & air, JD 2520  
tractor, JD 410 diesel backhoe, Farmall Super M,  
JD LA tractor w/cultivator and plow, Farmall Cub  
w/snowblade, Farmall Cub w/sickle mower and  
cultivators, 1980 Chevy dump truck, 1975 for 1  
ton flatbed truck, 42 Ft/Great Dane Flatbed  
trailer, Hurst 3 axle equipment trailer (1 yr. old), 2  
axle flat bed trailer, 28 pieces Wade-Rain  
irrigation Pipe 6"x40' w couplers, NH 479  
haybine, JDL manure spreader, IH 400 6 row  
planter w/no-til coulters, 3 shank ripper, terrain  
King ditch bank mower, flatbed trailer w/1700 gal.  
water tank. More items arriving daily. Old Hand  
Tools.

Consignments accepted Sat., Sept. 17 to Fri,  
September 30 8:00 a.m. to 6:00 p.m. Consign  
early for advertisements.

Terms: Cash, Certified or Approved Checks  
w/Letter of credit if not known to Auctioneer.

**AUCTIONEER:  
Sam Walters III  
(302) 284-4619**

Not responsible for accidents • Lunch Served

## Public Auction Register

Closing Date Monday 5:00 P.M.  
of each week's publication

SAT. OCT. 1 - 10:30AM,  
Valuable Real Estate, Personal  
Property, Tools, Etc.  
Two Plus Acres, Mostly  
Wooded Level Land.  
Located On Norheimer  
Road In Salisbury Town-  
ship, Pequea Valley School  
District. From Route 322  
East Go South On Route  
897 To Gault Road, East  
To Narvon Road, North To  
Norheimer Road. Owners,  
Paul & Mary Jane Glick,  
Steve & Steve Jr. Peter-  
shelm, Aucts.

SAT. OCT. 1 - 10AM, 225  
Head Of Feeder Cattle.  
Located: On Alvin Wen-  
ger's Farm, Port Trevorton,  
Pa. Nevin Martin & Sons  
Aucts.

SAT. OCT. 1 - 11AM Farm  
Real Estate, 11 acre farm  
in N. Leb. Co., Pa. Exit 1 of  
178, to traffic signs at Mt.  
Zion Rd. Rt. on Mt. Zion to  
L. on Greble, 2nd farm on  
left. Fernwood Auction Co.

SAT. OCT. 1 - 11AM 80  
acre Tilden Twp. Farm

w/200 yr. old stone home,  
farm & hog equip., tools.  
Located along Walnut  
Road, Tilden Twp., Berks  
Co., Pa. For W.J. Byassee  
& Kimberly S. Byassee.  
Dennis F. Wagner, auct.

SAT. OCT. 1 - 12Noon  
53rd Ayrshire production  
sale sponsored by the NY  
Ayrshire Club, Inc. Fair-  
grounds, Gobleskill, NY.  
Tom Whittaker, auct.

SAT. OCT. 1 - 12Noon,  
Real estate 1.00 PM. 26  
acre farm, tractor, farm  
equip, furniture, 926 N.  
State St., Ephrata Town-  
ship, Lanc. Co. By Elam G.  
& Lillian W. Martin. Aaron  
E. Martin Auct. Service.

SAT. OCT. 1 - 12Noon,  
Myers Auto Sales, Real  
Estate, Auto repair and  
inspection station. N  
Mechanic St., Fredericks-  
burg, Pa. Bethel Twp., Leb.  
Co. Go 1/4 mile N. of the vil-  
lage of Fredericksburg on  
N. Mechanic St., the prop-  
erty fronts along Interstate  
I-78 and N. Mechanic  
Street. By Elbert & Kathryn  
Myers. Nelson L. Ebersole,  
Roger L. Myers, aucts.

SAT. OCT. 1 - 12:30PM-  
Tack. Horses- 1 PM. Horse

## PUBLIC SALE

**OF FARM MACHINERY, MODEL T FORD  
MERCURY AUTOS, ANTIQUE TRACTOR  
& AUTO PARTS, TOOLS, ETC.**

*Due to the death of my husband I will sell on  
my premises at 1537 West Liberty Road (Rt. 26)  
at Winfield, Carroll County, Maryland, on;*

**SAT. OCTOBER 1, 1994**

**Beginning at 9:30 A.M., the following:**

1937 A.C. W.C. tractor unstyled, one owner,  
restored; 1939 A.C. W.C. restored, 1950 A.C.  
W.D. W/Freeman loader, one owner; 1964  
Moline M-5 W/3 Pt., P.S., Live P.T.O.; INH. #  
2000 loader W/Hyd. bucket, Case off-set disc,  
M.M. 32 disc harrow, three flat bed wagons,  
gravity wagon, N.H. # 469 haybine, White no-  
till corn planter, N.I. transplanter, woods 3 Pt. #  
72 Cadet mower, N.I. Fert. cart, N.I. single row  
corn picker, Lilly 3 Pt. rake/teeder, J.D. rake,  
200 Gal. field sprayer, J.D. two row pull type  
corn planter, S.T. harrow, lime spreader,  
cultipacker, N.I. # 17 manure spreader. J.D. 3 Pt.  
3 X 16 plows W/new shanks, 16' grain auger, 3  
Pt. MTD. Fert. spreader, bale elevator, MTD.  
circular saw, 3 Pt. wood splitter, platform scales,  
corn sheller, snow fence, vise, Power Craft 230  
welder, floor jack, ACT. tanks, Pro 4000 AC.,  
Super A & A cultivators, A.C. cultivators, bench  
grinder, jointer planer, tractor chains, seed  
cleaner, milk cans, potato plow, Sm. tools, bolts,  
Etc. **TWO HORSE ANTIQUE SLED**, made by  
C.M. Waltz's Father. **1921 MODEL T FORD  
DEPOT HACK**, restored. Subject to  
Confirmation. Sold About Noon. **1965  
MERCURY PARLANE 4 Dr.** Good Condition.  
**1963 MERCURY MONTEREY 4 DR.**

**TRACTOR & AUTO PARTS** - W.C. rear end  
complete, W.C. fenders, gas tank, sheet metal,  
bell housing, cast wheel centers, side rail frames,  
Mech. lift, P.T.O. gear box, P.T.O. shaft, all for  
A.C.; wheel weights, A.C. starters, belt pulley  
assembly, other parts.

**MODEL T & OTHER AUTO PARTS**- Four  
Model T rears, transmission, firewall W/cowl,  
front end, front wishbones, rear springs, wheels,  
heads, brake drums, 1924-T engine block, one  
ton T rear wheels, other parts. Model T parts,  
**390 FORD ENGINE**, 37 Ford rear complete, 37  
Ford generator, horn button assembly W/worm  
for same, 351 & 352 parts, new & used tires,  
other Ford & Mercury parts, Chev. S-10 engine,  
1937 & up license tags, fancy parlor stove, P.O.  
cubby holes from old Sykesville P.O., many  
unlisted articles.

**TERMS - Cash or good check. No Out of State  
checks unless accompanied by a Current Bank  
Letter of Credit. Not responsible for any  
accidents on the premises.**

**MRS. CELESTE BARNES,**  
Owner

**AUSTIN BOHN, AUCTIONEER**  
410-775-7607

**CHARLES FUNKHOUSER, AUCTIONEER**  
**SIDNEY D. LEASE, CLERK**

(LUNCH BY TAYLORSVILLE U.M. WOMEN)

Sale. Located Leinbach  
Auction. Sales Manager,  
Mel Hoover.

SAT. OCT. 1 - 12:30PM  
Beautiful farmette. Ron J. &  
Ron S. Gilligan, aucts.

SAT. OCT. 1 - 2PM Private  
gun collection. Bethel, Pa.  
At Exit of Interstate 78 at  
the TTMA Truck Stop, go  
N. 1 mile on Rt. 645, left  
onto Beagle Rd. for 2 miles,  
auction on right. 591 Beagle  
Rd., Bethel, Pa. Nelson  
L. Ebersole, auct.

SAT. OCT. 1 - 7PM, Annual  
Fall Feeder Cattle Sales At  
Friend's Stockyard, Acci-  
dent, Md. 21520. For More  
info Call: 301-746-8178.

SUN. OCT. 2 - 1PM Camp  
or Permanent Home at  
auction, Just off Intersec-  
tion of Rt. 192 & Rt. 477 at  
Livonia. George Orren,  
owner. Ron J. & Ron S. Gil-  
ligan, aucts.

MON. OCT. 3 - 1PM 152  
Acre Farm. RD 2 Annville,  
E. Hanover Twp., Leb. Co.  
From Rt. 422 in Annville at  
traffic light - N. 3.7 mile on  
Rt. 934 to Y in Bellegrave -  
left 4.1 miles on Blacks  
Bridge Rd. to Y at Lindley  
Murray Rd., bear right .5  
mile to farm on left. For  
Dorothy Houser. Harry H.  
Bachman, auct.

MON. OCT. 3 - 3:30PM,  
Valuable Personal Prop-  
erty & 1962 Chevrolet 4-Door  
Impala. Located 1634 Main  
St., Rothsville, Pa. Auction  
For, Anna Lutz. E.M. Murry  
Associates.

MON. OCT. 3 - 4PM Shrub-  
bery, trees, bagged bark  
mulch, railroad ties. Good-  
ville Fire Co. from Blue Ball  
take Rt. 23 E. to village of  
Goodville to fire co. on  
right, or from Morgantown  
Rt. 23 W. to Goodville to  
fire co. on left. East Earl  
Twp., Lanc. Co. Pool Forge  
Nursery & Greenhouse.  
Randal Kline, Lloyd Kreid-  
er, Roy Good, Jr. aucts.

MON. OCT. 3 - 5PM,  
Household Goods, Car &  
Truck. Located At 19 Over-  
look Dr., Ephrata, Lanc.  
Co., Pa. Directions: Ephra-  
ta, North State St., Turn  
Left onto Overlook Drive.  
Terms By, Scott & Vicki  
Young. Horst Aucts.

## PUBLIC AUCTION

**OF VALUABLE  
REAL ESTATE -  
ANTIQUES -  
PERSONAL  
PROPERTY ON**

**SAT. OCT. 1,  
1994  
AT 9 A.M.**

*At 2535 Bremer  
Road, Dover, Pa. in  
Conewago Twp. The  
undersigned will offer  
at public auction the  
following*

## REAL ESTATE

Approx. 2 1/2 acre lot -  
some wooded and  
improved with a ranch  
style house with 3  
bedrooms, 1 1/2 baths,  
oil hot air heat.

**INSPECTION: By  
Appt. phone 292-  
2878. Also lot of  
antiques & personal  
property & much  
more. Not responsible  
for accidents on day  
of auction.**

**Refreshments  
Available.**

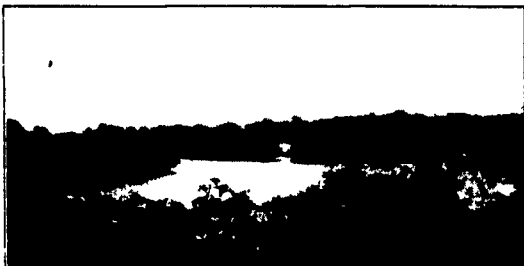
**TERMS: Cash or  
personal check with  
auctioneer approval.**

**Isabella G.  
Lloyd**

Owner  
Jacob A. Gilbert,  
Lic. #336  
Brian L. Gilbert,  
Lic. #2256  
Auctioneers  
William B. Anstine,  
Attorney

## PUBLIC SALE OF HOLLAND STONE DWELLING - 2 STORY, REAL ESTATE EXCELLENT LOCATION (OVERLOOKING LAKE) FRIDAY, OCTOBER 14, 1994 AT 5 P.M.

Located at 145 Millardville Rd., Jackson Township (Richland), Lebanon Co., PA. Directions: Rt. 422 East of  
Myerstown, turn South onto Millardville Road, Left onto Tulpehocken Rd., Right onto Bungalow Rd. to property.



**1.5 ACRES M/L, HOLLAND STONE (RAISED RANCHER)  
ATTACHED 2-CAR GARAGE (OVERSIZED)  
(AIR CONDITIONED)**

### MAIN LEVEL

LIVING ROOM w/stone fireplace, DINING ROOM, LARGE BEDROOM, many closets, FULL  
BATH, KITCHEN w/stove, dishwasher, oak cabinets, PATIO w/2 wood patio doors.

### DAYLIGHT LEVEL

LARGE FAMILY ROOM w/fireplace, 2 BEDROOMS, FULL BATH, LAUNDRY w/ auto. washer &  
dryer. Patio, 2 CAR (oversized) GARAGE w/full bath.

This well built dwelling has many fine features, 3 full baths, 2 fireplaces, 3 bedrooms, living & family  
room w/bar & fireplaces, hot water heat w/2 zones. Landscaped w/beautiful view overlooking WIL-  
LOW SPRINGS PARK LAKE, 20 miles to Hershey, 20 miles to Lancaster & 20 miles to Reading. BE  
SURE TO INSPECT THIS FINE PROPERTY!

Open House: Sat., Oct. 1 & Sat., Oct. 8 from 1 p.m. to 3 p.m. or call auction service at  
717-738-3080.

No Out Of State Checks Unless Accompanied By A Current Bank Letter Or Prior Arrange-  
ment With Auction Service.

**HORST AUCTS., AU438L**  
T. Glenn (717) 858-1331 • (717) 738-3080  
Timothy G. Fax 738-2132  
Thomas A. "VOICES OF EXPERIENCE"

Terms By:  
**LEESA TROY KING CRNOGORAC**