

Some Markets Not Available Due To Early Press Deadlines

Hog Markets



New Holland Hog Auction

Lancaster, Pa.
Monday, September 19, 1994
Hog Receipts:
Today 1254
Last Monday 1139
Last Year 1029
HOGS: Compared to last Monday barrows and gilts steady to 50 lower.
BARROWS AND GILTS: US 1-2 210-250 lb 34.50-36.00.
US 1 210-240 lb 36.00-38.50.
US 1-3 210-260 lb 33.50-34.00, 190-210 lb 32.00-33.00.
US 2-3 265-285 lb 34.00-35.00, 285-300 lb 33.00-34.00.

State Graded Feeder Pig Sale

at Westminster Livestock Auction
Report Supplied by Auction
September 16, 1994
591 PIGS; 2 WEEKS AGO 565. COMPARED TO LAST SALE #1&2 PIGS SOLD STEADY TO 5.00 HIGHER. WEAK DEMAND FOR LOWER GRADES.
GRADE 1: 213 HEAD 49-54 LBS. 56.00; 21 HEAD 63 LBS. 52.00.
GRADES 1&2: 107 HEAD 35-45 LBS. 47.00-57.00; 104 HEAD 50-59 LBS. 48.00-53.00; 104 HEAD 70-74 LBS. 42.00-47.50.
GRADE 2: 26 HEAD 32-46 LBS. 22.00-26.00; 7 HEAD 100 LBS. 36.00.
GRADE 2&3: 5 HEAD 34 LBS. 20.00.
NEXT STATE GRADED SALE FRIDAY, OCT. 7, 11:30 A.M.

Lancaster Hogs

Lancaster Stockyards
Saturday, September 17, 1994
Report supplied by auction

There will no longer be a sale auction on Saturday. Sales will be held Monday and Wednesday.

St. Louis Cattle, Hogs

Springfield, Il.
Monday, September 19, 1994
NATIONAL STOCKYARDS
ILLINOIS CATTLE AND CALVES 600. COMPARED TO LAST MONDAY SLAUGHTER STEERS AND HEIFERS STEADY TO WEAK. COWS 1.00 LOWER. BULLS STEADY. SLAUGHTER SUPPLY MIXED CHOICE AND MIXED SELECT AND CHOICE STEERS AND HEIFERS. LARGE SUPPLY HOLSTIEN STEERS. AROUND 10% COWS.
SLAUGHTER STEERS: CHOICE 2-4 1050-1375 LBS. 62.00-63.50, 2-3 1100-1300 LBS. 63.50-64.00; MIXED SELECT AND CHOICE 2-3 925-1300 LBS. 59.00-62.00. SELECT 2-3 900-1325 LBS 56.00-59.00. FEW LOTS CHOICE 3-4 1400-1550 56.00-58.00; HOLSTEIN STEERS: CHOICE 2-3 1300-1500 LBS 57.00-58.00. MIXED SELECT AND CHOICE 2-3 1200-1400 LBS. 54.00-57.00; SELECT 2-3 975-1350 51.00-54.00.
SLAUGHTER HEIFERS: CHOICE 2-4 900-1250 LBS. 61.00-62.50; 2-3 950-1300 LBS. 62.50-63.00, MIXED SELECT AND CHOICE 2-3 850-1150 LBS. 58.00-61.00; SELECT 2-3 825-1175 LBS. 55.00-58.00.
SLAUGHTER COWS: BREAKING UTILITY AND COMMERCIAL 2-4 39.00-41.00; HIGH YIELDING BREAKING UTILITY 41.00-42.00. CUTTER AND BONING UTILITY 1-2 41.00-42.00; HIGH YIELDING CUTTER AND BONING UTILITY 1-2 42.00-43.00, CANNER AND LOW CUTTER 1-2 36.00-40.00; SHELLY CANNER 1-2 33.00-36.00.
BULLS: YIELD GRADE 1-2 1150-1800 LBS. 50.00-56.00; INDIVIDUAL YIELD GRADE 1 1600 LBS. AT 57.00.
THIS REPORT IS A SERVICE OF THE ILLINOIS DEPARTMENT OF AGRICULTURE LIVESTOCK AND GRAIN MARKET NEWS SERVICE, SPRINGFIELD, IL. (217) 782-4925.

Hay & Grain Markets



Diffenbach Auction Center

New Holland, Pa.
Monday, September 19, 1994
Report Supplied by Auction
TOTAL LOADS: 112.
ALFALFA: 62.00-150.00.
MIXED HAY: 45.00-150.00.
TIMOTHY: 57.00-150.00.
CLOVER: 80.00.
BRCMBGRASS: 65.00.
ORCHARD GRASS: 50.00-100.00.
STRAW: 50.00-150.00.
EAR CORN: 85.00-97.00.
OATS: 2.10.
RYE: 4.10.
FIREWOOD: 62.00.

Good's Hay

Leola, Pa.
Wed., September 21, 1994
Report Supplied by Auction
TOTAL LOADS: 36.
CORN: 83.00-107.00.
MIXED HAY: 95.00-139.00.
TIMOTHY: 80.00-152.00.
STRAW: 85.00-115.00.
ALFALFA: 65.00-70.00.
GRASS: 90.00.

Westminster Hay

Westminster, Md.
Tuesday, September 20, 1994
Report Supplied by Auction
77 LOADS.
ALFALFA: 70-3.30 BALE.
TIMOTHY: 1.20-2.60 BALE.
MIXED HAY: 90-2.60 BALE.
GRASS: 60-1.70 BALE, 52.00-70.00
LARGE ROUND, 13.00-24.00 LARGE ROUND.
CLOVER: 1.40-1.70 BALE.
STRAW: 1.90-2.10 BALE.
MULCH: 40-75 BALE.

Kirkwood Hay Auction

Kirkwood, Pa.
Tuesday, September 20, 1994
Report Supplied by Auction
30 LOADS OF HAY.
MIXED HAY: 1ST CUTTING 96.00-140.00, 2ND 110.00-126.00.
TIMOTHY: 112.00-200.00.
ALFALFA: 1ST CUTTING 100.00, 3RD CUTTING 47.00-112.00; 4TH CUTTING 132.00-137.00.
CLOVER: 68.00-97.00.
STUBBLE: 53.00.
GRASS: 65.00-130.00.
WHEAT STRAW: 108.00-172.00.
OAT STRAW: 56.00.
OATS: PER BUSHEL 1.00.
SALE TIME 11 A.M.

Leinbach's Hay

Shippensburg, PA
September 17 and 20
Report Supplied by Auction
31 LOADS.
ALFALFA: 78.00-100.00.
MIXED HAY: 46.00-85.00.
BROME GRASS: 68.00-92.00.
ORCHARD GRASS: 40.00-70.00.
STRAW: 90.00 LOAD.
EAR CORN: 66.00-88.00.
RYE SEED: 4.10 BU.
TIMOTHY SEED: 12.00-18.00 BU.
FIREWOOD: 46.00-52.50.

Keister's Hay

Middleburg, PA
September 20, 1994
Report supplied by auction
54 LOADS, 22 LOADS OF HAY.
MIXED HAY 50.00-85.00.
TIMOTHY: 80.00.
EAR CORN: 14 LOADS, 85.00-95.00.
SHELLED CORN: 2.00-2.75 BU.
RYE: 3.00-3.85 BU.
OATS: 1.40-2.20 BU.
BARLEY: 2.30 BU.

Green Dragon Hay

Ephrata, Pa.
Friday, Sept. 16, 1994
Report Supplied by Auction
72 TOTAL LOADS.
MIXED HAY: 62.00-130.00.
ALFALFA: 77.00-110.00.
TIMOTHY: 75.00-155.00.
ORCHARD GRASS: 55.00-100.00.
STRAW: 70.00-155.00.
EAR CORN: 72.00-93.00.
OATS: 1.65 BU.
RYE: 3.10-4.50 BU.

Dewart Hay

Dewart, PA.
Monday, September 19, 1994
Report Supplied by Auction
18 LOADS OF HAY, 43.00-83.00.
STRAW: 1 LOAD AT 56.00.
WOOD: 4 LOADS, 30.00-56.00.
CORN: 5 LOADS, 71.00-76.00.
OATS: 1 LOAD AT 2.10 BU.



Regional Hay

September 19, 1994
Eastern, Pa.
HAY & STRAW MARKET FOR EASTERN PA - (ALL HAY NO. 2 AND BETTER. PRICES PAID BY DEALERS AT THE FARM & PER TON). HAY AND STRAW STEADY.
ALFALFA 70.00-105.00; MIXED HAY 70.00-100.00; TIMOTHY 65.00-105.00; STRAW 80.00-100.00; MULCH 25.00-40.00.

SUMMARY OF LANCASTER CO. HAY AUCTIONS FOR WEEK ENDING 9/16/94. PRICES PER TON: LOADS: 154 HAY, 55 STRAW & 42 EAR CORN.
ALFALFA 55.00-142.00; MIXED HAY 52.00-160.00; TIMOTHY 70.00-166.00; STRAW 70.00-170.00; EAR CORN 63.00-93.00.

SUMMARY OF CENTRAL PA. HAY AUCTIONS FOR WEEK ENDING 9/16/94. PRICES PER TON: LOADS: 79 HAY, 7 STRAW & 37 EAR CORN.
ALFALFA 54.00-125.00; MIXED HAY 60.00-140.00; TIMOTHY 60.00-100.00; STRAW 56.00-115.00; EAR CORN 77.50-101.00.

New Holland Horses

New Holland Sales Stables
New Holland, PA
Monday, September 19, 1994
Report Supplied By Auction
350 HEAD. MARKET STEADY. WORK HORSES 885.00-1375.00. DRIVING HORSES 565.00-1200.00. RIDING HORSES 625.00-925.00. BETTER RIDING HORSES 950.00-1025.00.
REGISTERED RIDING 720.00-2100.00.
KILLERS: HEAVY WEIGHTS 700.00-880.00, FEW 940.00-1070.00, LIGHT WEIGHTS 465.00-605.00.
PONIES: 135.00-350.00.
LARGE PONIES 420.00-490.00.
COLTS 155.00-430.00.

Dewart Livestock

Dewart, Pa.
Monday, September 19, 1994
Report Supplied by PDA
STEERS: 55.00-62.00.
HEIFERS: 54.00-60.25.
GOOD COWS: 41.00-48.00.
CANNERS AND CUTTERS: 37.00-41.00.
BULLS: 43.00-48.50.
VEALS 90-190 LBS. 99.00-215.00, 70-90 LBS. 55.00-99.00.
HOGS: 31.00-34.00.
SOWS: 22.00-26.50.
FEEDER PIGS: 12.00-25.00 PER HEAD.

FEEDER CATTLE

Tues., Sept. 27
8:00 P.M.

Bring a Load - Buy a Load

CARLISLE

Livestock Market, Inc.
Turn South of I-81 at Exit 12
(717) 249-4511 or
evenings, Jim 249-2359

KIRKWOOD HAY AUCTION

Hay, Straw and Grain Auction
EVERY TUESDAY
11:00

Located Rt. 472 5 miles south of Quarryville or 8 miles north of Oxford corner of Rt. 472 and Noble Road.

Lloyd H. Kreider,
Auctioneer
AU-000513L
No out of state checks

PENNFIELD GRAIN BANK

Pennfield Offers A Sound Program For The Dairy Farmer To Use His Grain "Same As Cash" To Reduce His Monthly Feed Bill And To Avoid Having To Take "Harvest

Prices Week Of 9/19/94
Corn \$2.68 Bu.
Soybeans \$5.73 Bu.
Barley \$1.80 Bu.

- No Storage Charges
- Prices Updated Weekly
- Grain Bank Balance Shown On Each Invoice
- No Hidden Charges

For every ton of qualifying dairy feed purchased you will receive one ton of grain back hauled at no charge



In This Issue

Five Sections

COLUMNS

Now is the Time..... A10
On Being A Farm Wife..... B 2
Taking Time..... B 4
Consuming Thoughts..... B 5
Family Living Focus..... B 7
Ida's Notebook..... B15
You Ask..... B26

DEPARTMENTS

Editorial A10
Farm Calendar..... A10
Farm Forum A10
Futures A16
Fair Happenings..... A22
Mailbox Markets..... B18
Public Auction Register..... B23
Classified Ads C10, D 9
Business News C 4
Sale Reports D 8

DAIRY

DHIA Focus..... A28
Lancaster DHIA..... D 3, C 5
Pa.DHIA Report..... D 2, D 7

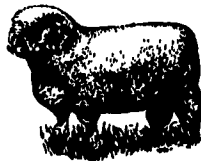
FEATURES

York Fair..... A19, A20
Reading Sheep A23
Ephrata Swine..... A25
Denver Beef..... A29
Reading Fair Dairy..... A30
Solanco Sale..... A32
Ephrata Dairy..... A34
Ephrata Sheep A36
Somerset Beef..... A37
Breakfast Ideas..... B12
N.Y. Ice Cream..... B14
Montgomery Fair..... C 3
Compost Conference..... C 8
Ag Careers C 9
Susquehanna 4-H..... D 4
Angus Futurity D 6

HOME AND YOUTH

Homestead Notes..... B 3
Home On The Range..... B 6
Cook's Question Corner..... B 8
Kid's Korner..... B10
Farm Women Societies..... B16
4-H Happenings..... B 9, B16

POULTRY NEWS..... Special



Walter M. Dunlap and Sons offers all cattle feeders two marketing days. Give us a call for advice and marketing conditions.

MONDAYS OR WEDNESDAYS

Consign With Us - For The Marketing Edge

Next Feeder Cattle Sale

Wednesday, September 28 - 11:00 A.M.

Walter M. Dunlap and Sons

Lancaster Stockyards

Tel. (717) 397-5136

An Old Line Commission Firm Keeping Ahead With The Times