

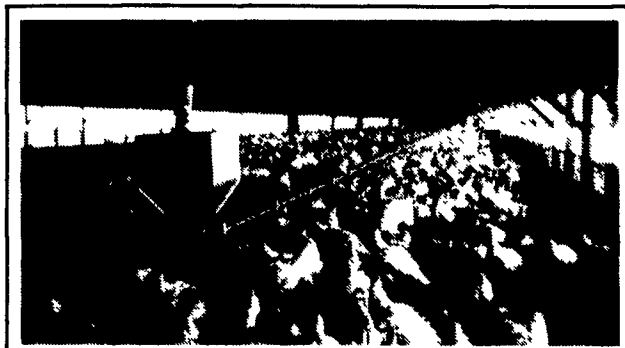
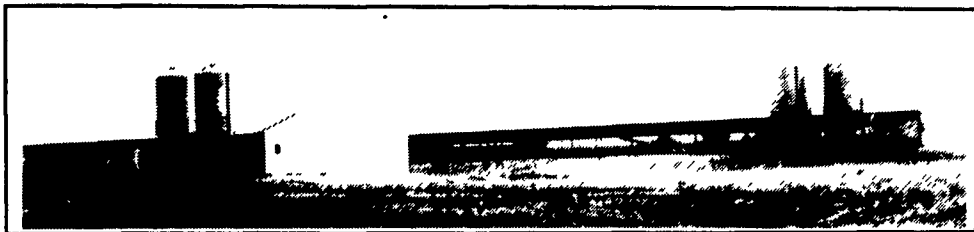
FARMER BOY AG

INVITES YOU TO JOIN US AT THE

NORTHEAST POULTRY SHOW

WED. & THURS. SEPT. 28 & 29 - LANCASTER HOST RESORT

THE NEW & LATEST IDEAS IN TURKEY & BROILER BUILDINGS & EQUIPMENT

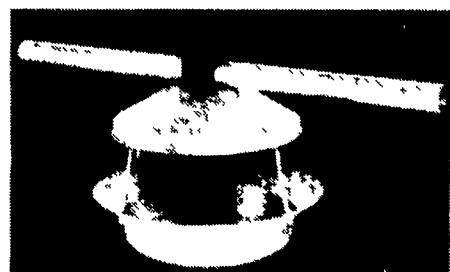


Inside Turkey Facility

Inside Broiler Facility

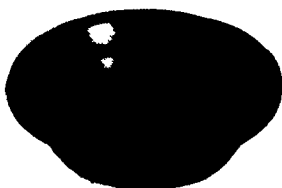


TURKEY PAN FEEDING SYSTEMS



SIMPLY THE LEADER

Cumberland continues being the leader in the manufacturing of poultry equipment by introducing a turkey feeding system for every application. Cumberland's Turkey Feeders have revolutionary features which make them both profitable and easy to maintain for the end customer. Cumberland Feeders deliver feed economically, efficiently, and dependably with savings for the grower. The Cumberland Turkey Pan Feeding System offers a poult turkey pan for young turkeys and two models of adult turkey pans, designed to withstand the rugged treatment of adult turkeys through grow-out.



NEW PLASTIC PAN
Easier to clean... non-corrosive... lighter... Cumberland's plastic pan for both STF and RTF Adult Pan Feeders features improved structural engineering with stronger support gussets, a more durable and effective "hanger" for cleaning and a unique set of two feed-saving "catch walls" that significantly reduce raking and billout.



A Two-Stage Plan

The first 7-10 days of a broiler's life are critical. The eating habits they develop then establish their growth pattern for life. For these very young birds the Cumberland HI-LO Pan Feeder, resting on the house floor, presents a lip height of 2.1" (the average height of traditional "chick lids"). Because they can easily and safely get in and out of the pan, they're eating out of the pan from day one. And because the pan doesn't get "flooded" they're getting only fresh feed and only as much as they need.

Low Position

2.1"

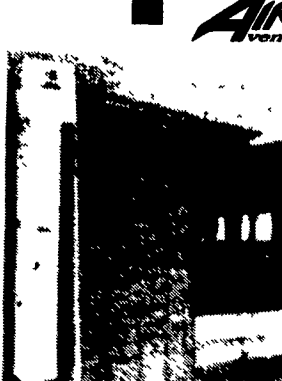
High Position

3.5"

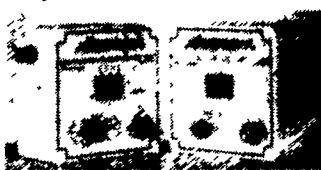
Then as the birds grow, and the feed line is raised, the Cumberland HI-LO Pan Feeder E-X-P-A-N-D-S into a 3.5" deep adult bird pan! The higher wall and feed saver lip prevent waste from raking and billout and cause the birds to eat nearer the outside edge of the pan, assuring a more even, "first in, first out" utilization of feed (which also saves feed and maintains freshness).



GSI
FEED BINS



AIRSTREAMER
ventilation systems



SCREW DRIVE CURTAIN COMMANDER™
Screw Drive Automated Ventilation Curtain Controller by design is unsurpassed for durability and simplicity of operation.
• Reversible brake drives available in 15 and 60 RPM models • 3,000 lb lift capacity (contact factory for restrictions)



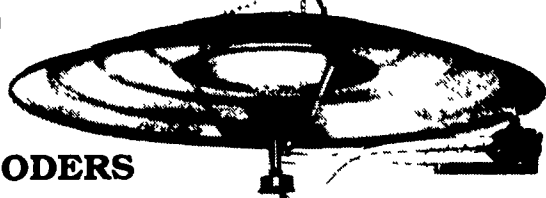
PURA-FIRE HEATER
Choose From 2 Models

- C80M - variable output (40,000 or 80,000 BTUH) • C225 - 225,000 BTUH unit
- Each is LP or natural gas compatible and can be mounted inside or outside your confinement house

Unique "bent flame" design increase flame's surface area and heat chamber efficiency. More warm air is drawn across the fan and blown out side vent.



Shenandoah



BROODERS



AIRSTREAMER
ventilation systems
FANS

Twistlink belt on Belt Drive for Ease of Adjustment to Keep at Top Performance.

di PLASSON

BROILER DRINKERS



TURKEY DRINKERS

★ Representatives Will Be There To Assist You In Building & Equipment Design.

Full Line Of Parts In Stock For Your Poultry And Hog Needs

Hours: M-F 7:00-5:00; Sat. 7:30-11:30



Swine & Poultry Systems Specialists
FARMER BOY AG.

410 E LINCOLN AVE (RT 422) MYERSTOWN PA 17067

PH. 717-866-7565

Check Our Warehouse Prices

MasterCard

VISA

WE SHIP UPS

★ Excellent Contracts Available.

★ We Are Looking Forward To Meeting Old & New Friends In The Poultry Industry