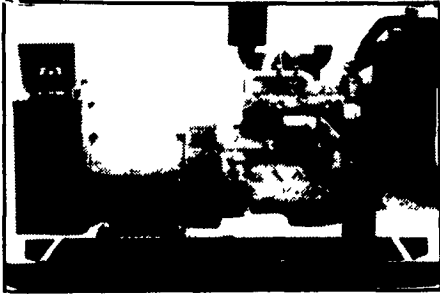
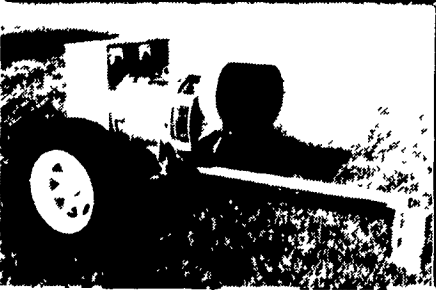


GENERATORS



**AUTOMATIC and
MANUAL SYSTEMS**

**DIESEL
L.P. GAS
NAT. GAS
NEW & USED**



**LEROY SOMER
PTO ALTERNATORS**

**BRUSHLESS
INDUSTRIAL GRADE
11 to 60 KW**

READY FOR THE NEXT STORM?

For Sales and Service Call The People Who Know Generators
MARTIN ELECTRIC PLANTS
 280 Pleasant Valley Rd., Ephrata, PA 17522-8620
 Tel: 717-733-7968 Fax: 717-733-1981

**#55 JD
Combine,
square back,
12' grain platform,
3 RN corn head,
exc., only 1574 hrs.,
shed kept
(717) 324-2841**

**FOR SALE
HIAB Boom
Model 1165
with Continuous
Rotating Fork
Call 610-268-3210**

Winco, Fidelity & Katolight Alternators,
Automatic Generators, Diesel - LP Gas.
Repair service on all alternators.
Call before you buy

WALLIS GENERATORS
 Carbondale, PA
 717-282-2342 1-800-231-2968

Norm Shores & Son Tractor

RR 5, Towanda, PA 18848

717-265-9014

USED TRACTORS

- Ford 7710, Factory Cab, Air, Dual Power, Dual Remotes, Excellent
- Ford 7700, Cab, Air, Dual Power, 38" Tires, Blue Power Special, Nice Tractor
- Ford 5610 Dsl., Dual Power, Dual Remotes, w/QT Loader, 7' QT Bucket, Ind. Valve, Very Nice
- Ford 5000 Dsl. 8-Spd., 1971 Model, Clean ~~SOLD~~ Original
- JD 4620 w/cab, duals & weights, front wheel assist, nice clean tractor
- JD 4450 4WD, Cab, Air, Power Shift, Digital, Front Weights, Front Fenders, Excellent
- JD 4320, Factory Cab, Duals, Weights, Quick Hitch, Absolutely 1-Of-A-Kind!
- JD 3020 Dsl., Syncro, WF, 2 Remotes, w/JD Roll Bar & Canopy
- JD 2550 4WD, Cab, Air, Dual Remotes, Hi-Lo, w/JD 245 QT Loader w/QT Bucket & Independent Valve
- JD 730 Dsl., Direct Electric Start, NF, 3 Pt., 1 Remote, Good Condition
- Case IH 5130 Maximum, 4WD, cab, air, power shift, 1300 hours, excellent
- Case 2090, Cab, Air, Power Shift, 4WD, Weights, 1981, Excellent
- Case 2090, Cab, Air, PS, Front Weights 18x38 Tires, Very Nice
- Case IH 685, 4WD, w/IH 2255 Loader, 700 Hours, Excellent
- IH 1086, 79 Model, Red Power, Cab, Air, Weights, Excellent
- IH 986, 81 Model, Cab & Air, Radials, 2400 Original Hours, Immaculate
- IH 886, cab, air, 1981 model, triple outlets, 38" tires
- IH 886 4 Post ROPS, w/38" Tires, 2 Remotes
- IH 826, WF, 3 pt., 2 remotes, diff lock, very nice
- IH 786 w/2 PTO's, 2 remotes, very good tractor, 1980 model, non-cab
- IH 784, 4WD, late one, equipped w/IH 2250 loader w/ind. valve, very nice
- IH Hydro 84 w/38" tires and bar axles, 2 remotes, IH 2250 quick attach loader
- MF 3545, 2 PTO's, 2 remotes, 20.8x38, non-cab, extra nice
- MF 3505, factory cab, air, quick hitch, 500 actual 1-owner hours, excellent
- AC 8070, 1984 model, Cab, Air, Weights, 4WD, Power Shift, Excellent
- AC 7045, Cab, Air, Power Shift, Weights All Around, Good Tractor
- White 2-70, 4WD, 2 remotes, 3 spd. over/under, good condition
- White 2-135, cab, air weights, 2 PTO's, 2 remotes, nice original condition
- White 2-135, 4WD, cab, air, 2 remotes, 2 PTO's, 2400 hours, extra nice

FORAGE WAGONS

- Gehl 970, 3 Beater w/Roof w/Gehl Tandem Wagon, Used Very Little, Excellent
- Dion Forage Wagon, 3 beater w/roof & 12 ton tandem, excellent, choice of 3
- Gehl 970, 3 beater, no roof, w/JD 12-ton tandem
- Gehl 970, 3 beater w/roof & JD 12-ton tandem
- Rex 3 beater w/roof tandem axle wagon, steel sides, very nice condition (Lamco)

**JD 5400 Self Propelled Harvester
Cab, 4WD, 4RN Head,
Nice Clean Unit**

USED FORAGE EQUIPMENT

- Gehl 7200 flail chopper, very nice
- Gehl FB88 forage blower, very nice
- Gehl 1200 w/Electric Controls w/3RN Corn Head, Good Condition
- Gehl 600 w/Manual Controls, 540 PTO, Electric Sharpener And Hay Pickup Head
- NH 892 w/Late Style 2R Adj. Corn Head And Hay Pickup Head, Electric Controls, Very Nice
- NH 892 w/3RN Auger Base & 8' Pickup Head, Electric Controls, Good Condition
- JD 3960 w/2RN Or 2RW, Electric Controls, Hyd. Tongue, Nice Original Harvester

USED PLANTERS AND DRILLS

- JD 7000 4R conservation, monitor, dry fert. & insecticide boxes
- JD 7000 4RN, dry, plateless, insecticide boxes

USED PLOWS AND CHISELS

- Ford 151 4x18 spring auto reset w/spring loaded coulters, very nice (same as White 508)
- IH 700 5x16 w/coulters, gauge wheel & hillside hitch
- IH 720 4x18 auto reset w/coulters & gauge wheel
- Oliver 588 4x18, auto reset w/coulters & gauge wheel
- JD 1710 9-tooth mulch tiller w/walking tandems, very nice

USED DISCS AND HARROWS

- Bush Hog 1440 18' hyd. wing fold rock flex finishing disc
- Brillion 10' double packer
- JD 16' transport type spring tooth harrow, good condition
- McConnell 16' transport spring tooth harrow
- White 253 12' finishing disc w/tandem wheels, very nice
- White 265 11' heavy frame cutting disc w/tandem wheels & 24" blades

USED HAY EQUIPMENT

- FNH 489 Haybine w/Stub Guards, Good Rolls, Nice
- NH 479 haybine, very nice
- NH 258 rake w/dolly wheel & rubber teeth
- NH 316 w/#70 thrower, excellent
- NH 276 baler w/thrower, electric controls, cylinders & hoses, very nice

USED HARVESTER HEADS

- Gehl 2R Snapper head, very nice
- NH 770 Hay Pickup Head
- NH 3 RN Auger base package w/8' pickup

LOADERS

- Ford 772 QT w/6' bucket & valve, brackets for 5000-7000 series tractors
- Allied 760 w/7' bucket Brackets for JD



The Industrial & Commercial
Sales Division
of
**HYGROOVE RACING
PRODUCTS**
950 Page Road
Harrisburg, PA 17111
(717) 564-6632
FAX (717) 564-9579



**2" SUPER LONG-WIDE
HANDLE RATCHET
STRAPS**

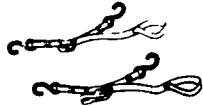
10,000 # Flat Hook 24 ft.,
27 ft., 30 ft.
\$27.50 - \$30.00



**WELD ON & BOLT ON
WINCHES**

2", 3", 4"
\$17.50 - \$20.50

**1" MOTORCYCLE, ATV,
LAWN & GARDEN, LIGHT
EQUIPMENT TIE DOWNS**



Cam Lock Tie Downs
Vinyl "S" Hooks
66" Length 1,200 #
\$12.95 pr.

Ratchet Tie Downs
Vinyl "S" Hooks
66" Length 1,200 #
\$18.50 pr.



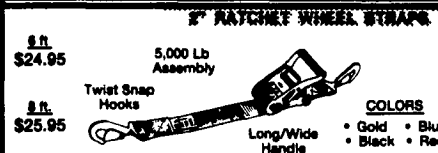
**1" HEAVY DUTY
RATCHET TIE DOWN
SNAP HOOK ENDS
4,000 #**

6 ft., 10 ft., 12 ft.,
16 ft., 20 ft.
\$16.00 - \$19.00



**"E" TRACK (PRIMED)
12 GAUGE STEEL
48,000 # YIELD**

6' \$4.95
12' \$5.95
30' \$9.50
5 ft. \$15.25
10 ft. (Whipped 1/4 Truck) \$18.95



2" RATCHET WINCH STRAPS

6 ft.
\$24.95

5,000 Lb
Assembly

Twist Snap
Hooks

COLORS
• Gold • Blue
• Black • Red

6 ft.
\$25.95

Long/Wide
Handle

"NEW IMPROVED AUTO TIE-DOWN"

2" AXLE STRAPS

5,000 Lb. Rated

Round 21" ... \$6.95

"D" Rings 33" ... \$7.95

Delta Rings (Two Ply) 10,000 Lb. Rated

24" ... \$11.95

Protective Sleeves Add'l \$1.00

2" COMBO RATCHET/AXLE STRAPS

6 ft.
\$32.95

Protective Sleeves

5,000 Lb
Assembly

6 ft.
\$33.95

12,000 Lb Polyester
Webbing

**ONE PIECE ADJUSTABLE
"BUILT-IN AXLE STRAP"**

10,000 Lb. Rated Units Available

2" TIE BACK STRAPS

COLORS
• Gold • Blue
• Black • Red

5,000 Lb
Rated

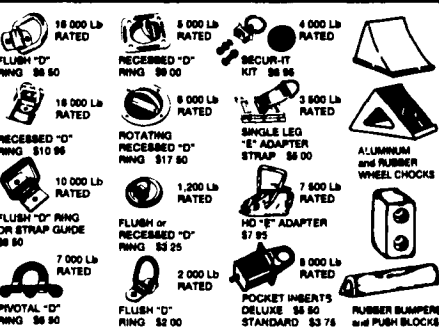
Adjustable Length
24"-40" ... \$14.95

Protective Sleeve

**ONE PIECE AUTO TIE-DOWN
WITH "BUILT-IN AXLE STRAP"
...RATCHET NOT REQUIRED.**

10,000 Lb. Rated
Units Available

**TIE DOWN
HARDWARE**



Serving the Racing, Industrial, Commercial,
Transportation and Building Industries since 1983
ORDER LINE 1-800-552-1080
 6% Sales Tax for PA Residents
**CALL TODAY FOR ORDERS
AND FREE CATALOG**

UPS DAILY
 MASTERCARD
 VISA
 DISCOVER
 AMERICAN EXPRESS
 QUANTITY DISCOUNTS
 AVAILABLE
 DEALER INQUIRIES WELCOME