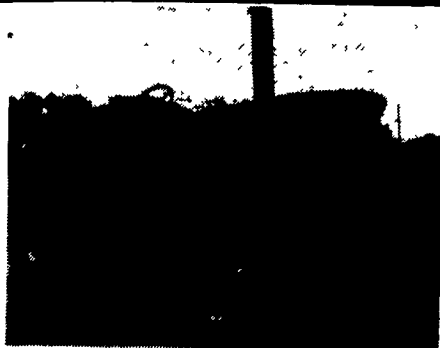


1 FARM EQUIPMENT



**JD 4320 120 HP
\$6,600**



**Ford TW20, Cab,
20.8x38 Radials
\$8,500**

- Ford TW20, Cab & Air.....\$8,300
- JD 4320, Fender.....\$6,700
- Toyota SDK8 Skid Loader, 1990, 1,100 Hrs. \$8,000
- JD 575 Skid Loader, 1400 Hrs., runs good...\$5,500
- NH 352 grinder mixer.....\$1,000
- NI 213 PTO Driven Manure Spreader.....\$800
- 10' High Clearance Chisel Plow, Gauge Whls \$500
- JD 2010 Utility, Gas, Good Condition.....\$3,500
- NH 411 Discbine.....\$3,000
- Woods 15' Batwing Mower, Good Cond.....\$3,500
- JD 930 Front Cut, Runs Good.....\$3,500
- Onan 1500 KW gas generator.....\$700

410-429-1927 or 410-857-7102

**OLIVER CLETRAC
CRAWLER TRACTORS**



**Unstyled 1936 Cletrac AG, Runs Well
\$1800**



**1954 Oliver OC-6 Gas, PTO & Hydraulics,
Good Engine, Rebuilt U/C
\$3500**



**Streamlined 1938 Cletrac AG with Winch,
Runs & Operates
\$1700**

717-738-2573



**WISCONSIN
HEAVY DUTY
ENGINES**

Serving The Community Since 1971

Wisc.-Robin, Kawasaki, Kohler, Briggs & Stratton, Tecumseh, Honda
Rockford and Twin Disc Clutch Parts & Accessories

WISCONSIN REPLACEMENT ENGINES New & Rebuilt Short Blocks

Special Purchase V465D 65 HP Wisconsin, Electric Start w/Alternator, Ideal for Grinders, Large power Units, Reg. List \$4,836 **ONLY \$2,885 (While They Last)**

- W2-1250, 30HP, electric start.....\$1595
- Special Prices on 30HP VH4 crank start engines No Tank.....\$1,945

Authorized Service Center

- Complete Rebuilding
- Large Parts Inventory



**FISHER
ENGINE
SERVICE**

3141 Old Philadelphia Pk. • Bird-In-Hand, PA 17505
For Service Calls: 717-768-3729

**J&L EQUIPMENT HAS SOLD THE BUSINESS OF
GATES • FREESTALLS • HEADLOCKS TO:
MARTIN'S FARM SUPPLY**



HEADLOCKS
1 1/2 OD Pipe
Sched 40 Pipe
3 Sizes
Adjustable
Quick Release



FREESTALLS
2 1/2 OD Pipe
Sched 40 Pipe
Several Styles
4 Bolt 1/4" Clamp
Painted & Galvanized
Brisket Board Bracket



GATES
5 & 6 Bars
48" High
1 1/2" & 1" Pipe
1 1/2" & 3/4" Pipe
Sched 40 Pipe
Strap Hinges
Spring Latches

**Fence Panels • Slanted Bar Panels
All Headlocks, Gates & Panels made
to fit your measurements**

Martin's Farm Supply

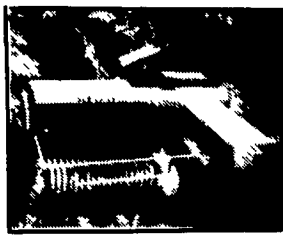
Call: St. Thomas, Pa. 717-369-5702
7 Miles West of Chamberburg, Pa.

BARGAIN HUNTER VALUES

*Track Down
BIG BUYS
ON QUALITY
Used Equipment*



**IH 5088 Tractor
135 HP, 1984
\$22,500**



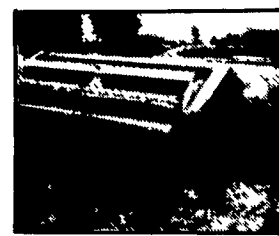
**JD 336 Baler w/ 30
Bale Ejector, Nice
\$4,500**



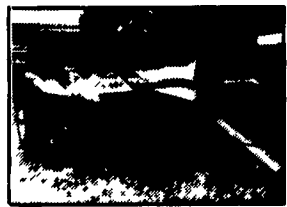
**NH 900 Harvester w/
Hay Head
\$18,900**



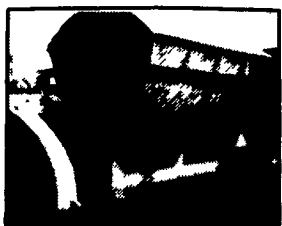
**NH 575 Square Baler
\$8,900**



**NH 492 9 Ft. Haybine,
Used 2 Seasons
\$7,200**



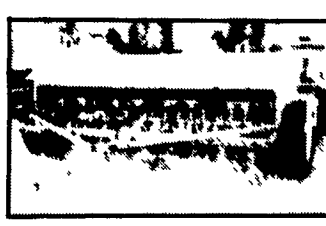
**New Holland Windrow
Inverter
\$2,800**



**Richardson Dump Wagon
\$4,900**



**Ford 1710 Offset Tractor, 250
Hours, Excellent Condition
\$14,900**



**JD 8300 18x7 10 ft.
Grain Drill
\$3,250**



**Ford 3400 Gas w/ Loader,
Runs Good
\$7,900**



**JD 4840, 180 HP, Clean,
New Rear Tires
\$25,900**



**NH 411 10' Diskbine,
Excellent Condition
\$8,900**



**Ford 242 23 Ft. Wing Fold
Disk Harrow**



**NH 499 Pivot Tongue, 12
Ft. Mower Conditioner
\$8,500**



**Kuhn GMD 77 HD 9'2"
Cut Disk Mower -
Used 1 Season
\$4,650**



**JD 1219 Mower Conditioner
9 Ft., Very Good Condition
\$5,500**



**JD 1610 Chisel Plow 12 Ft.
\$1,500**



**110 South Railroad Ave.
New Holland, PA 17557
(717) 354-4191**

M-F 7:30
to 5:00
Sat.
7:00 to Noon