

Central U.S. Carlot

Beef Report
 Tuesday, Sept. 20, 1994
 Report supplied by USDA
 CENTRAL U.S. CARLOT BEEF REPORT (INCLUDES THE MAJOR PRODUCTION AREAS IN THE MIDWEST AND TEXAS) AS OF 11:15 A.M. COMPARED TO MONDAY'S 3:00 P.M. REPORT: UTILITY AND BULL CARCASSES STEADY; CUTTER NOT ESTABLISHED. DEMAND AND OFFERINGS LIGHT.
COW AND BULL CARCASSES
 FOB OMAHA BASIS
 5 LOADS REPORTED
 UT, BRK 2-4 450 AND UP, 1 LOAD, RANGE 69.50, LATEST ESTB. MKT. 69.50.
 UT, BNG 1-3 400 AND UP, 2 LOADS, RANGE 73.50, LATEST ESTB. MKT. 73.50.
 CUTTER 1-2 350 AND UP, LATEST ESTB. MKT. 80.00-80.50 C.
 BULLS 500/UP YG 1, 2 LOADS, RANGE 88.00, LATEST ESTB. MKT. 88.00.
BONELESS PROCESSING BEEF/BEEF TRIMMINGS
 55 LOADS REPORTED
 LEAN BONELESS BEEF NOT ESTABLISHED; 75% WEAK TO 1.00 LOWER; 65% GENERALLY STEADY IN A LIGHT TEST. DEMAND AND OFFERINGS LIGHT. BEEF TRIMMINGS LOWER ON LIGHT TO MODERATE DEMAND AND MODERATE OFFERINGS.
 FOB OMAHA BASIS
 90% FRESH, RANGE 109.0-110.50, 109.60 CWT.AVG.
 90% FZ, RANGE 110, WT. AVG. 110.00 C.

85% FR, RANGE 100.00, WT. AVG. 100.00 B.
 85% FZ, UNQUOTED.
 75% FR, 4 LOADS, RANGE 73.00, WT. AVG. 73.00.
 75% FZ, UNQUOTED.
 65% FR, 2LOADS, RANGE 54.00, WT. AVG. 54.00.
 65% FZ, UNQUOTED.
 50% FR, 15 LOADS, RANGE 23.00-25.00, WT. AVG. 23.73.
 50% FZ, 22 LOADS, RANGE 27.00-28.00, WT. AVG. 27.18.
 50% BX, 10 LOADS, RANGE 25.50, WT. AVG. 25.50.
 BULL 92-94, 2 LOADS, RANGE 122.0-123.0, WT. AVG. 122.50.
 FOB EAST TX & OK
 90% FR, RANGE 109.0-110.0, WT. AVG. 109.27 C.
 90% FZ, UNQUOTED.
 85% FR, UNQUOTED.
 85% FZ, UNQUOTED.
 85% FZ, UNQUOTED.
 75% FZ, UNQUOTED.
 65% FR, UNQUOTED.
 65% FZ, UNQUOTED.
 BULL 92-94, UNQUOTED.
CAF NORTHEAST AREAS
 90% FR, RANGE 112.0-113.0, WT. AVG. 112.94 D.
 90% FZ, UNQUOTED.
 85% FR, UNQUOTED.
 85% FZ, UNQUOTED.
 75% FR, UNQUOTED.
 75% FZ, UNQUOTED.
 65% FR, UNQUOTED.
 65% FZ, UNQUOTED.
 ABCDE AFTER QUOTES REPRESENTS DAYS SINCE LAST ACUTAL MARKET TEST. QUOTES ARE DROPPED AFTER 5 DAYS OF NO TEST OR BEFORE IF THEY NO LONGER REFLECT CURRENT MARKET CONDITIONS.

Grantsville Livestock

Grantsville, Maryland
 Report Supplied by Auction
 Sat., September 17, 1994
STOCK BULLS AND STEERS
 200-500 LBS. 60.00-80.00.
STOCK HEIFERS: 60.00-75.00.
SLAUGHTER STEERS GOOD TO CHOICE 60.00-64.00; MEDIUM TO GOOD 49.50-58.50.
HOLSTEIN STEERS GOOD 55.00-57.75; LIGHT 50.50-54.00.
SLAUGHTER HEIFERS GOOD TO CHOICE 55.00-61.00; MEDIUM TO GOOD 45.00-54.00.
BULLS HEAVY 44.00-57.00, LIGHT 50.00-60.00.
COWS FEW HIGH DRESSING UP TO 46.50, UTILITY HOLSTEIN 40.00-44.00, CANNERS 36.00-39.00, CULLS 35.00 AND DOWN.
VEALS GOOD TO CHOICE 70.00-95.00, MEDIUM TO GOOD 55.00-68.00.
BOB CALVES: 50.00 AND DOWN.
HOLSTEIN BULL CALVES RETURN TO FARM 90-120 LBS. 75.00-95.00.
HOLSTEIN HEIFER CALVES RETURN TO FARM 100-120 LBS. UP TO 155.00.
BEEF CROSS CALVES RETURN TO FARM UP TO 100.00.
HOGS TOP QUALITY 34.00-37.00; HEAVY 32.00-37.00, LIGHT 32.00-36.00, FEEDER PIGS BY THE HEAD 10.00-35.50.
SOWS 20.00-26.50.
MALE HOGS 18.00-25.00.
LAMBS 65.00-72.00; CULLS 60.00 AND DOWN; FEEDERS UP TO 75.00.
SHEEP 20.00-30.00.

New Wilmington Livestock Auction

New Wilmington, Pa.
 Monday, September 19, 1994
 Report Supplied by PDA
CATTLE 186. PDA ..Compared with last Monday's market..sl. cows steady. STEERS: few Standard 50.00-54.50. HOLSTEINS: one Choice 1395 lbs. 57.75, few Select 50.00-52.75. HEIFERS: one Select 58.00. COWS: Breaking Utility and Commercial 42.00-44.00, couple to 46.00, Cutter and Boning Utility 40.00-44.00, few to 45.25, Canner and Low Cutter 37.00-40.75. Shells down to 30.00. BULLS: couple Yield Grade No. 1 1615 & 1700 lbs. 55.00 & 55.75, few No. 2 1180/2025 lbs. 46.00-53.00. FEEDER CATTLE: Steers: few Large Frame No. 2 205/385 lbs. 54.00-61.00; Heifers: few Medium Frame No. 1 550/785 lbs. 38.00-48.00; Bulls: few Medium Frame No. 1 345/740 lbs. 46.50-59.00.
CALVES 225..VEALERS: Standard and Good 80/95 lbs. 40.00-47.50, Utility 50/80 lbs. 10.00-34.00. FARM CALVES: No. 1 Holstein bulls 120/145 lbs. 108.00-110.00, 100/115 lbs. 112.00-120.00, 80/95 lbs. 58.00-92.00, No. 2 90/115 lbs. 82.00-111.00; No. 1 Holstein heifers 90/135 lbs. 204.00-247.50, No. 2 65/100 lbs. 100.00-190.00. Beef cross bulls and heifers 80/125 lbs. 100.00-132.50.
HOGS 267...Barrows and gilts .25 to .75 lower. BARROWS AND GILTS: US 1-2 230/260 lbs. 33.85-35.25, US 1-3 225/265 lbs. 33.00- 34.10, 180/195 lbs. 28.00-33.00. SOWS: US 1-3 280/515 lbs. 26.50-31.00. BOARS: few 445/730 lbs. 23.50-24.00.
FEEDER PIGS 69...Few US 1-3 30/55 lbs. 15.00-23.00, 55/95 lbs. 17.00-26.00. --- per head.
SHEEP 139...Slaughter lambs: High Choice and Prime 65/100 lbs. 70.00-75.00, Choice 60/95 lbs. 62.00-69.00, Good and Choice 40/65 lbs. 40.00-61.00. Slaughter sheep: 15.00-34.00 mostly 20.00-28.00, Yearlings 40.00-53.00.
GOATS 6...One Large 48.00, one Medium 29.00, few Small 10.00-28.00. -- per head.

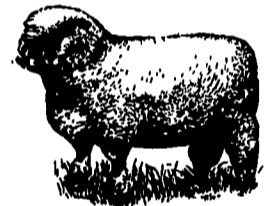
FEEDER STEERS: 1 HEIFER AT 460 LBS. 67.50 AND 1 BULL AT 520 LBS. 57.00.
CALVES: 185 HEAD. CHOICE 90-125 LBS. 50.00-65.00; GOOD 85-95 LBS. 45.00-55.00; STANDARDS AND GOODS 75-95 LBS. 30.00-45.00; UTILITIES 85-95 LBS. 30.00-35.00.
FARM CALVES: #1 HOLSTEIN BULLS 100-115 LBS. 100.00-125.00, 95-100 LBS. 100.00-115.00; #1 HOLSTEIN HEIFER CALVES 100-105 LBS. 215.00; #2 80-140 LBS. 80.00-120.00; BEEF X BULL CALVES AND HEIFERS 80-100 LBS. 102.00-147.00.
HOGS: 61 HEAD. US#1&2 236-265 LBS. 32.85-34.50; 1 LOT OF US#1-3 240 LBS. 35.50; #2&3 275-285 LBS. 30.00-33.25.
SOWS: 52 HEAD. #1&3 490-640 LBS. 28.00-31.50; #2&3 390-490 LBS. 26.75-28.75; MEDIUMS FROM 335-390 LBS. 25.00-27.50.
BOARS: 8 HEAD. 485-545 LBS. 23.00-24.00; 220-290 LBS. 24.00.
SHEEP: 3 HEAD. 15.50 LB.

Valley Stockyards

Athens, Pa.
 September 19, 1994
 Report supplied by auction
HOLSTEIN HEIFER CALVES, TOP 230.00.
VEAL CALVES TO 90.00.
VEALER BULL CALVES 90.00-120.00.
SLAUGHTER CALVES 60.00 AND DOWN.
GRASSERS & FEEDERS 43.00-65.00.
LAMBS 50.00-82.50.
SHEEP 15.00-34.00.
HOGS 200-250 36.00-40.00.
SOWS 22.00-24.00.
BOARS 19.00-23.00.
PIGS, NONE.
HEIFERS 42.00-52.00.
STEERS 46.00-54.50.
FEEDER STEERS 50.00-75.00.
BULLS 44.00-53.75.
GOOD COWS 39.00-44.25.
COWS MEDIUM 33.00-38.00.
COWS POOR OR SMALL 32.00 AND DOWN.
CATTLE MARKET EASIER.
CALVES STEADY.
HORSES TO 690.00.
PONIES, NONE.
GOATS TO 85.00.

Lebanon Valley Livestock

Fredericksburg, PA
 Tuesday, September 20, 1994
 Report supplied by Auction
STEERS: 27. CHOICE STEERS 1265-1290 LBS. 59.25-64.25; SELECTS 1055-1310 LBS. 53.75-56.75; HOLSTEINS CHOICE 1210-1255 LBS. 56.00-58.50; SELECTS 1210-1380 LBS. 53.25-55.25.
COWS: 104 HEAD. BREAKING UTILITY AND COMMERCIAL 47.00-50.25; CUTTER AND BONING UTILITY 44.00-47.50; CANNER AND LOW CUTTER 40.25-44.50; SHELLS 36.50 DOWN.
BULLS: 1 HEAD. YG#2 1385 AT 53.75.



SHYDA'S

Shoe & Clothing Barn

1635 S. Lincoln Ave., Lebanon, Pa.

(Across from Lebanon VA Hospital) 717-274-2551

Anniversary Sale Thru Oct. 1st

Open:
 Mon.-Fri. 9-9
 Sat. 9-5
 CLOSED SUNDAY

Register For 3 Hunting Trips & Other Prizes



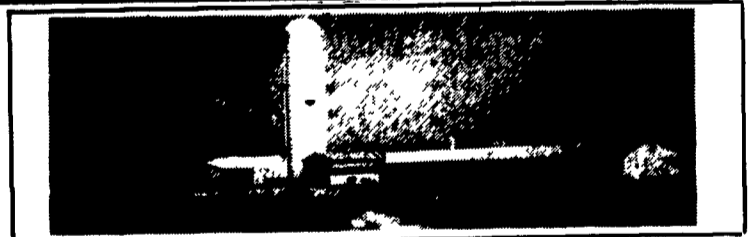
| | |
|--|---|
| Mens & Lady's Danner Hiking Shoes (Style 3042) Reg. \$114.95 Sale \$99.95 | Lightweight Pro Line Camouflage Hiking Boots \$32.95 |
| Mens & Lady's Duck Shoes \$21.95 | Rocky Goretex-Thinsulate Stalker Boots In Trebark Camouflage Reg. \$104.95 Sale \$94.95 |
| Rocky Gore-Tex Thinsulate Cornstalker Boots Reg. \$109.95 Sale \$99.95 (In Grey Real Tree & Mossy Oak Bottom Land Camouflage) | Whitewater Waterproof Camouflage Fleece Jackets Reg. \$111.95 Sale \$89.95 |
| Men's & Lady's Columbia Pullover Fleece Jackets Reg. \$46.95 Sale \$34.95 | Remington Safari Jackets Reg. \$108.95 Sale \$59.95 |
| Knee High Rubber Work Boots \$10.95 | Remington Worstarlon Camouflage Shirts Reg. \$37.95 Sale \$22.95 |

Tent Specials Thru October 1st

| | |
|--|---|
| Walls Insulated Camouflage Coveralls Reg. \$65.00 Sale \$40.00 | Camouflage Fleece Jackets \$25.00 |
| Mossy Oak Non-Insulated Coveralls Reg. \$43.00 Sale \$29.95 | Timberland Boat Shoes Reg. \$65.00 Sale \$25.00 |
| Ski Hats \$3.00 | Small & Med. Goretex-Rain Parka's \$50.00 |
| Crew Sweatshirts Starting At \$7.95 | 9 oz. Camouflage Chamols Shirts Starting At \$14.95 |
| Duofold Turtlenecks Starting At \$10.00 | Mossy Oak 6 Pocket Pants Reg. \$32.95 Sale \$19.95 |



AGRI-INC. Custom Built Farm Buildings Designed To Your Needs



HEIFER BARN & TIE STALL BARN



HORSE STALL BARN

Let Our Experience Work For You

- Dairy Complexes And Replacement Stock Facilities
- Horse Stall Barns And Riding Arenas
- Workshop And Machinery Storage Buildings
- Timber Column Buildings For Light Commercial



AGRI-INC. The Construction Professionals

151 E. Farmersville Rd., Ephrata, PA 17522
 • (717) 354-4271

Serving The Agricultural Industry For Over 25 Years

