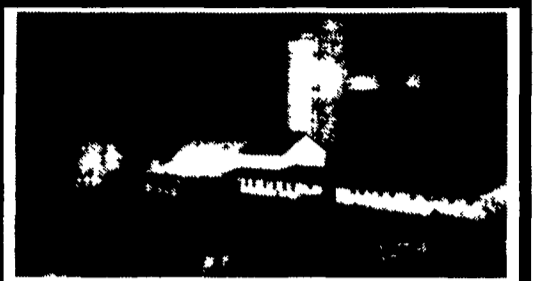


50 ACRES LYCOMING CO., PA
 Nice 3 BR home, flat barn and outbuildings, nearby Amish, beautiful view.
S.E. STUCHELL RE/MAX WEST BRANCH 717-321-1013

BY OWNER BRADFORD COUNTY FARM.
 30 Acres, 2 Miles From Route 6 at Wyalusing, PA. Nice 8 Room Farmhouse, Hot Water Heat, Drilled Well, 60 Stall Dairy Barn, Pole Machinery Building and Shop, Silos, Pasture, Woods, Other Buildings, Free Stall, Etc. Dairy, Beef or Horses. Nice Setting. \$120,000
Possible Terms. (717)278-1574.

NEW HORIZONS REAL ESTATE CO.
 Need a Mortgage?
 Private mortgages are alternative to conventional, institutional type mortgages. Private money allows flexibility in arranging financing to fit individual needs which can include second mortgages, home equity loans, refinancing, etc.
 Bellefonte (814) 355-8500
 State College (814) 231-8540
 John Petuck-Broker



500-acre dairy farm located in the scenic rolling landscape of western Pennsylvania near the historic village of West Middletown. Some features include approximately 360 tillable acres, an 89-stanchioned milking barn with automatic cleaning system pumping into 250,000 gallon liquid manure tank, TMR computerized feeding system, equipment barn, repair shop, 4-bedroom farmhouse, 2 mobile homes, pond, numerous springs and wells, plus many extras. Perfect for the multi-family business!
For more information call Joyce Hambleton, FFV Realty (412) 267-3949 or (412) 222-8011.

AUCTION Sept. 29, 1994 6:00 PM
ERA/Byrns Realty (315)287-1789
 Location: Clearview Restaurant, Route 11, South of Gouverneur, NY Dairy Farm on 90 Acres, 92 Freestall-Parlor, 4-5BR Home, 1 Mile Road Frontage on 2 Roads, Peaceful Location, May be the best Buy on Freestall Dairy
 Could be sold before Auction
 Owner: (315) 347-3483

Near PA Border
188 Acres, 120 tillable, balance woods and pasture, creek, dairy barn all milking equipment, silo (2) sheds, 3 BR farmhouse.....\$134,500
100 cow tie stall barn, silo, shed, 4BR farmhouse, 50 tillable acres, owner anxious.....\$92,000
100 acres wood, creek, asking....\$50,000
36 acres 6 room house, barn, creek, joins state forest land, asking....\$70,000.

LEW REAL ESTATE INC.
 141 Chestnut St. • Corning, NY 14830
607-937-5637

WE PAY CASH
 For Owner Financed Mortgages Trust Deeds Business Notes from all States
 "Cash today is worth more than cash tomorrow"
 Why Wait?
 For a free quote please call
GROFF FUNDING 717-664-5241

WANT TO BUY:
 1 Dairy Farm between 125-150 acres or more.
 Have own mortgage facility.
 Lancaster Farming (R60) P.O. Box 609 Ephrata, PA 17522

ATTENTION
 We purchase small or large tracts of land. Are you thinking about building lots, subdivision?
 Call: Bob Keller
717/653-1523 717/397-7101 JERRY FREY REAL ESTATE

HUNTING LAND FOR RENT
 Bedford Co., Tussey Mountain Great hunting!
 40 Acres - \$500
 46 Acres - \$800
 100 Acres - \$1500
 Last 2 border State Game Lands
717/865-4473

FARM FOR SALE
 Beautiful gently rolling hill setting in Middleburg, (Snyder Co) PA, 66 +/- acres tillable, 21 +/- acres wood-land. 3BR, 1BA, 1894 farm-house has been totally remodeled and well cared for. 40x60 bank barn, needs work but foundation is good. \$299,900.
 Call Renate Ammann
RE/MAX REAL ESTATE TEAM, INC. (717) 743-1234 (717) 374-7777 for appointment

Potter County - Excellent hunting on this 92 ac. property, could also be used as horse or beef farm with 2 barns, and 2 bdrm house. All this for only \$115,000. #1336
129 acre dairy or general farm, more acreage available, 75 cow stall barn, 3 bdrm ranch style home, only \$149,900 #1274
Dwelling Unit + Bobby G's Bar with dance floor, kitchen, 8x16 walkin cooler, 2 restrooms + much more. Call for details \$115,000 #1332
Beautiful acres, full of wildlife, orchards, approx 50+ woods, 2 sty home w/some remodeling, large Lr, beautiful kit w/woodmade cabinetry. Total acreage of 92.41, now asking \$125,000 #1337

Hook REAL ESTATE AND INSURANCE
 9 Cone Street wellsboro, PA 16801
717-724-3500

SALE or LEASE: Clinton County 630 Acres Surrounded by State Forest, Lots of Game, Deer, Turkey, Bear, Coyotes. Easy Paved Access from Routes 120 and 44. State Groomed Snowmobile Trail and Cross Country Skiing, Hang Gliding. Great Location for your Club or Companies Retreat.
142 Acre Clinton County Farm, 40 Tie Stall Barn, Silo, Loafing and Implement Sheds, Milk Line, New Bulk Tank. 4BR 2 Bath 2-story Remodeled Farmhouse. East End Nittany Valley, Lamar Township. \$225,000.
45 Acres Wooded, excellent view, stream, 5 miles from Woolrich. \$45,000
 Many other Parcels of Land Available Call for Additional Details.
Big Woods Land Co. (717) 769-6445, (717) 769-6035 Evenings

LANCASTER COUNTY
Buck heights Road new 4-bedroom brick bilevel w/28x40 barn, 12x30 block building, on 1 1/2 A zoned ag. \$132,900
Mini Farmette in Rawlinsville: 3 bedroom house and barn, 3 acres \$104,900
41 Acres: 41 acre farm, small dairy/large chicken operation with large farmhouse and large barn. \$320,000.
Room for horses and ready to build on 5 1/2 acre lot, Martic Twp. \$58,000.
 If you have a farm to sell call:
 Clarence Wenger
(717) 575-0053 (Car)
(717) 299-4885 (Office)
(717) 284-4423 (Home)
Joan & Country REALTY
 1271 Lititz Pike
 Lancaster, PA 17601

FAIRVIEW, KENTUCKY FARM (CHRISTIAN COUNTY)
 Approximately one mile from Fairview, Kentucky, this 171 acre farm has been in the same family since 1942. It has a main dwelling, tenant house, three tobacco barns, one stock barn, machine shed, three good wells, a spring; county water is available. Fenced, with 143 acres cropland per ASCS office, 20 acres woods, 4988 # burley tobacco. The home is partly 100+ year old log, a good comfortable frame country home with plenty of room, including 3 bedrooms, bath, large country kitchen, fireplace, propane heat.
Price: \$256,500
 Write: **WILEY HORN REAL ESTATE 215 E. 21st St. Hopkinsville, KY 42240**
 or
 Dial 502-889-9966 days; or
 Nights 800-725-9427, then 4854

WIMPLE ASSOCIATES
OPERATING ORCHARD: 40 acres in resort area with lake rights & 50-60 more acres available. 1,000 producing semi & dwarf trees. Sales room w/bakery, sorting room, cold storage for 10,000± bushels. 2 large machine sheds. Cider press. 43 stall dairy barn could ship milk. Nice 4 BR home. INCLUDES: new tractor & all modern orchard equipment for \$195,000 or \$175,000 bare. owner terms & assistance available. JUST LISTED!
1/4 MILE MAPLE-LINED LANE leads into this 230 acre farm ideal for beef, horses or heifers. Mostly open land with pretty views in horse country near Cooperstown. Home needs some cosmetic work, has 4 bedrooms, exposed handhewn beams, fireplace, balcony over living room. Post & beam barn with 73 comfort stalls & high ceilings. Also 2nd barn. Flexible owner terms. **JUST LISTED! \$155,000**
Mort Wimple Associates Real Estate Sales - Management
 "ESTABLISHED 1953" U.S. ROUTE 20 SLOANVILLE N.Y. 12160
 FREE FARM CATALOGUES (518) 875-6385
 FAX: (518) 875-6749

CUSTOM BUTCHER SHOP - goats, lambs, poultry. Approximately 5 acres, 2 butcher shops, all equipment, refrigeration truck, many outbuildings plus 4 bedroom house with cold cellar. Seller willing to train 6-12 months, buyer for operation, train new owner for buying and partial owner financing. View of farms and Welsh Mountains. **\$349,900.**
COLDWELL BANKER
 Call Jack Coffin for details
(717) 393-0782 or (717) 898-7524.
 SLAUGH COOPER, INC.

CENTRAL PENNSYLVANIA FARMS
MONTOUR COUNTY - 55 acre farrowing operation w/40+ acres in CRP. 4 bedroom 1 1/2 bath brick home, 26 x 32 frame tenant home, 50 x 336 farrowing house plus 32 x 50 office/shop addition. 20 x 80 concrete silo. 1 acre pond. Adjacent Montour Preserve. **\$250,000**
MONTOUR COUNTY - 187 acre farrowing operation. 103 acres in CRP. 40 x 72 Butler building; 32 x 32 pole shed; 24 x 110 breeding house; 32 x 112 farrowing house w/nursery; 3-23 x 54 farrowing houses. 30,000 bu. grain storage. Ag security area. **\$325,000**
UNION COUNTY - 99 acre general farm in "harms way". Public water and sewer & natural gas available. Zoned "Village" and "Rural Residential". Plenty of frontage. Nice views. Just 1 mile off US Rt. 15 at West Milton. **\$395,000**
THE FAIRMAN AGENCY
 212 Main Street, Watsonstown, PA 17777
717-538-2582
 After hours call:
 Steve Ranck...717-524-7640

Mitchell County, Iowa Farm 705 total acres, 693.4 tillable, Where can you find a full section w/out fence, right here. Corn base 689.6, 153 bushel proven yield on the section and 92.5 w/130 bushel proven yield. All patterned tiled. For the lady of the farm, a beautiful 4BR home w/all the updated amenities possible and a double attached garage, home insured for \$165,000 For the farmer at heart, well kept outbuildings and a phenomenal green setup w/210,000 bushel storage. 2 grain lakes and store more top dryer, turnkey system. All automatic. You won't find this anywhere else.
Squier Real Estate 729 Main St. Osage, IA 50461 (515)732-5790

WISCONSIN DAIRY FARMS
NEAR NEW 157+ 75 Free Stall barn + pens and double 8 parlor w/state of the art equipment, well designed, completely confined housing and feeding w/natural ventilation; exc. 2300 sq. ft. ranch home, NEW shop 40x100, solar calf facility, 670 a, 560 till 2 add. houses, barns and sheds. Stocked & equipped \$1,350,000
394 Acres, near all till, 3 pivot irrigation systems; excellent 3 bdrm ranch home; 120 free stall barn plus heifer & steer feeding facilities; 4 silos; 155' bunk; approx 30,000 bu. grain storage & dryer; large sheds; excellent heated shop, level land and top yields. \$895,000 R.E. complete w/exc. line of machinery & herd of Holstein cows & heifers \$1,130,000
Chippewa County- 78 cow tie stall barn, very nice home, large shed & shop, 3 silos & corn unit. \$170,000 Also available stocked & equipped
Clark County 120 acres, 40 cow grade A dairy farm. \$120,000
Eau Claire County 300+ acres w/older home, 73 stall barn, 3 silos \$120,000 or 40 acres & buildings \$55,000
Dunn County 65 stall barn, 3 silos, 3 exc. steel bldgs, good older 4 bedroom home, 157 acres \$170,000 or 80 acres \$115,000
 For more information or brochures, contact
 L.L. Stewart, Broker (715)834-6664,
RE/MAX Chippewa Valley, 2215 E. Clairmont Ave., Eau Claire, WI 54701