

Oswalt 420 Mixer, Mounted on 75 International Cabover, DT466 Engine, Allison 650 Automatic Trans., Unit in Very Good Condition, Also Misc. Parts for Mixer. After 7:00pm, (717)933-8622.

Reo's 1974, need work, \$2,200 each (2). (717)393-2992.

Int. 1972 Cattle Truck, 12' aluminum body, new engine, \$3250 OBO; Chev 1975 C60 steel bed, new engine, \$2200 OBO. 410/833-1847.

Low Beds: Witzco 50 ton, 3 axle, 102"W, motor and PTO. Schertzer 35 ton w/ ramps, \$5,000. (215)343-0156.

FOR SALE: 1977 Suburban Chevrolet, V8, 350 engine, automatic, PS, PB, towing package, 1 owner, 80K. Call 717-365-3288.

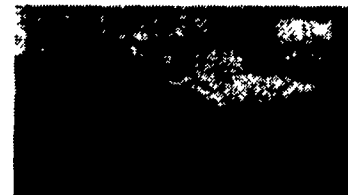
Fruehauf Dry Van, 45'X108" High, Excellent Rubber and Brakes, Excellent Condition. Salem County, NJ. (609)835-0348.

USED TRUCKS



'93 Dodge Club Cab D250 4x4, 5.9 or 360 V8, Auto, PS, PB, AM-FM, AC, Cruise, Tilt Wheel, 53,000 Miles, Local One Owner

\$17,900



92 Chevy Ext. Cab 2500, 4x4, 5.7 or 350 FI, Auto, PS, PB, AC, AM & FM

\$16,900

Financing Available

MARTIN'S AUTO SALES

1025 W. Main St., New Holland, PA 17557
(717) 656-6621

WHY?

...is Your Competition Driving Isuzu Trucks?

Less Down Time & Increased Profits!

Isn't It Time For An Isuzu For Your Business?

1994 ISUZU NPR CAB & CHASSIS

5 speed transmission, diesel engine, 11,050 CVW, Ready for any 10-12 foot body! Much More! #3145



\$18,485

Tax & tags additional.

717-354-4901
New Holland
FORD • ISUZU TRUCK
Rte 23, New Holland, PA

EXCELLENT WORK TRUCKS



'94 FORD 350 STAKEBODY Diesel, AT, XL Trim. #4962 Year End Closing Prices



'94 FORD F250 4X4 PLOW TRUCKS 351 V8, AT, 3-In-Stock Get Them While You Can

SHEEHY LEBANON

FORD • MERCURY • LINCOLN

20TH & CUMBERLAND STS. • RT. 422 WEST

- 1988 Chevy Astro LT 7 pass., V6, AT, Loaded, Blue, 85,400 mi.....\$6,900
- 1984 Chevy S-10 Blazer 4x4 V6, AT, AC, CR, Tilt, AM-FM Cass., Red/White, 203,500 mi.....\$3,900
- 1993 Dodge Intrepid 4 dr. V6, AT, Loaded, Dk. Green, 52,400 mi.....\$13,900
- 1992 Ford Taurus L V6, AT, AC, CR, Tilt, AM-FM Cass., Maroon, 55,700 mi. \$8,900
- 1992 Mercury Sable GS 4 dr. V6, AT, AC, CR, Tilt, AM-FM Cass., Blue 41,900 mi.....\$9,400
- 1992 Chevy Corsica LT 4 Cyl., AT, AC, CR, Tilt, AM-FM, ABS Airbag, Black, 53,800 mi.....\$6,900
- 1991 Pontiac Grand AM LE 2 dr, Quad 4 AT Loaded, Black, 79,400 mi.....\$6,800
- 1991 VW Jetta GL, 4 Dr, 4 Cyl., 5 Spd., AC, Tilt, Sunroof, Black, 74,900 mi.....\$6,900
- 1990 Ford Taurus SHO, V6, 5 Spd., Loaded, Leather Int., JBL, Airbag, Pwr. Sunroof, ABS, Titanium, 57,600 mi.....\$9,800
- 1990 Dodge Monaco LE 4 Dr, V6, AT, Loaded, Pwr. Sunroof, Black, 61,300 mi.....\$4,800
- 1989 Pontiac Grand AM LE, 2 Dr., 4 Cyl., 5 Spd., AC, Tilt, AM-FM Cass., Maroon, 71,300 mi.....\$5,900

Brubaker's Auto Sales

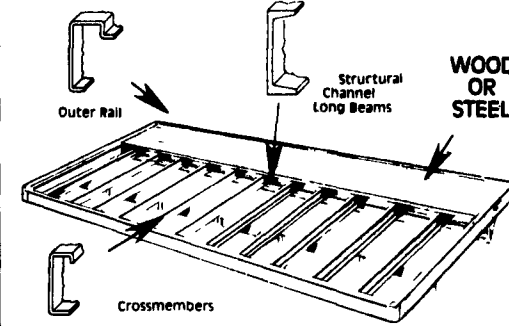
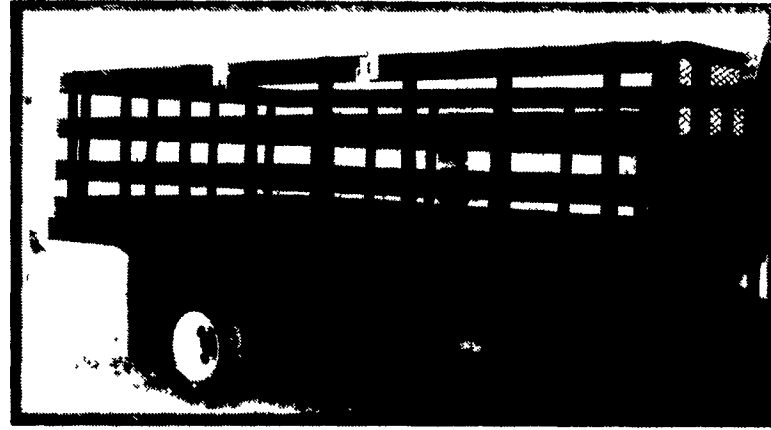
Myerstown, PA

717-866-5237

See Binkley & Hurst For A Quality Truck Body In Stock!

Scott CITY STAKE BODIES

STANDARD • ECONOMY AND STRUCTURAL



In Stock: New 12' Steel Truck Body With Stake Pockets and Bulk Head NE0405 Standard Model

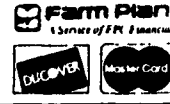
Optional Racks available in Polyboard, Aluminum or Steel Racks

Stop In And See Quality On Display And Ask For Dean For A Good Deal!

BINKLEY-HURST BROS. INC.

(717) 626-4705

133 Rothsville Station Rd. Lititz, PA 17453 1-800-11 PAYS YOU



2575 I.H. tandem axle tractor, 400 HP, 13 SD, wet line, air conditioned, Jake brake, power steering, low miles 814-684-3057



USED EQUIPMENT

BODIES

- 10' Eby Cattle Body
- (2) 12' Eby Cattle Bodies
- 15' Eby Cattle Body
- 16' Eby Cattle Body
- (2) 20' Eby Cattle Bodies

HAY BODY

- 1988 Eby 24'x8' Alum. Flatbed Body w/ Cab Rack

TRUCK

- 1982 20 Ft. Hostetter Wood Cattle Body on '82 GMC Truck

FLATBED

- New 10 1/2 Ft. Eby Alum. Flatbed Body

GOOSENECKS

- 1993 Eby 22'x7'6" Ruff Neck
- 1988 Eby 26'x7' Ruff Neck

HORSE TRAILERS

- 1988 Shoop 2-Horse Gooseneck
- 1986 Jackson 21'x6'x8' 4 Horse Gooseneck

M.H. Eby, Inc.

1194 Main Street (Route 23) Blue Ball, PA 17506 (717) 354-4971 (800) 292-4752 FAX (717) 355-2114

4435 State Route 29 West Jefferson, OH 43162 (614) 879-6801 (800) 752-0507 FAX (614) 879-6804

Agriculture Moves on EBY Bodies

M.H. Eby custom-builds aluminum truck bodies for the agri-transportation market. Nobody offers more sizes and options in:

- **LIVESTOCK BODIES** - Lengths to 32', choice of heights and widths.
- **GRAIN BODIES** - Lengths to 24'; landscape and general purpose dumps to 12'.
- **FLATBED BODIES** - Lengths to 32', choice of 5 widths.

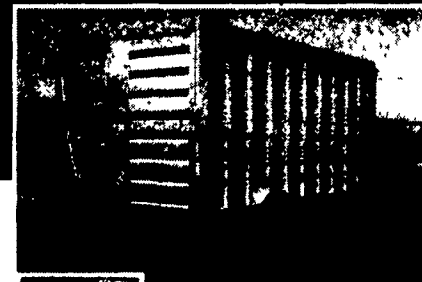
For greater payload capacity, Eby's aluminum design is equal in strength to steel and up to 40% lighter. Our corrosion-resistant components never need painting. That means minimum maintenance, improved appearance and higher resale value.

Eby products have superior standard features. And we offer custom options for virtually any application. Agriculture is your business- building bodies to haul it is ours.

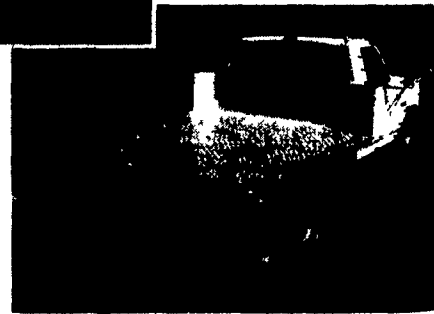


M.H. EBY, INC.

1194 Main Street (Rt 23) • Blue Ball, PA 17506 • 800/292-4752 • 717/354-4971 • FAX 717/355-2114
4435 State Route 29 • West Jefferson, OH 43162 • 800/752-0507 • 614/879-6901 • FAX 614/879-6904

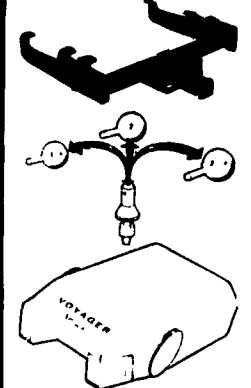


Let EBY custom build one for you.



TRAILER HITCHES

Quality & Price



★ Free Catalog
★ MC/Via/Disc
★ UPS Shipping
Weaver Distributing
1-800-Weaver-D
1-800-932-8373
Fax 717-865-2667