

**(800) 533-3837**

**YOUR DIRECT LINE TO GENUINE GM PARTS**

When you call the number listed above you'll reach our wholesale parts specialists, who can help you keep your GM repair work moving quickly. Ask About:

- Specializing In GM Medium Duty Trucks, Current and Obsolete.
- \$500,000 Parts Inventory
- Parts Locator For Those Hard To Find Items
- We Ship Anywhere. Local Delivery Available.
- Experienced, Knowledgeable Personnel.

**LEFEVER BROS.**  
DILLSBURG

(717) 432-9697

Quality Dealer Since 1921  
406 U.S. Route 15 • Dillsburg, PA 17019



*Mr. Goodwrench*

*Anthony Landis*

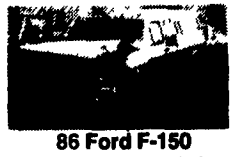
**AUTO BODY & SALES**

1701 B Division Hwy.  
New Holland, PA • 717-355-0611

**Specializing in Rebuilt Collision Damage Vehicles**



'91 Ford F-250 XLT Lariat  
7.3L Diesel, AT, PS, PB,  
AC, Tilt, Cruise, PW, PDL,  
PA, Salvage  
**\$8,500**



'86 Ford F-150  
XLT Lariat, Ext Cab,  
Longbox, 351, AT, PS,  
PB, AC, Cass., PW,  
PDL, Buckets, 117,000  
Mi. Very Nice Overall  
**\$2,975**



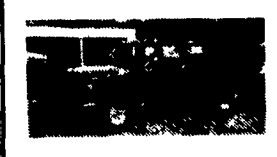
'94 Ford Ranger  
4.0L 5 Spd., Air Cond.,  
6,900 Mi., Light Right Front  
Damage  
**\$4,900**



'91 GMC Sonoma SLE,  
Longbox, 4.3L, AT, PS, PB,  
AC, Tilt, Cass., 60,000 Mi.,  
Scraped Down Right Side



'92 Chevy S-10  
CS, Extended Cab, 2 WD



'88 Ford F-150 XLT Lariat,  
Shortbox, 300, AT, PS, PB,  
AC, 97,000 Mi, Real Nice,  
Scraped Down Left Side

**HOSTETLER INVENTORY REDUCTION SALE**

**TRUCK EQUIPMENT**

9' Knapheide Toolbox Style Gooseneck Body, bulkhead, Recessed Lights, Treadplate Rear Step Bumper, In Prime for One Ton Truck.....\$1,450  
8' Dump Body, with Cylinder, Double Acting Tailgate, 16" Sides with 24" Ends \$1,000

Truck Craft 8' Tool Box & Dump Body Package for 3/4 Ton Pick Up with 2-8' Toolboxes.....\$1,500

Used Medium Duty 9' Dump Bed, Hoist and Pump.....\$1,000

Used 9' Stake Body with Solid Bulkhead, 40" Stake Racks, Good Shape \$900

16' Stake Body with Liftgate, Good Condition.....\$1,000

**UTILITY & FLATBED TRAILERS**

Used 5'x12' 2 Axle Trailer, Wood Racks.....ONLY \$750

5'x8' Single Axle, Mesh Floor and Gate, 2000# GVW.....\$695

5'x10' Single Axle, Wood Floor, 3000# GVW, 15" Wheels & Tires.....\$2,995

Tilt Deck \$895 Ramp Gate.....\$1,040

5 1/2'x8' Single Axle, Solid Sides and Gate, Torsion Axle, with Pick Up Truck Cap.....\$995

5'x10' Enclosed Cargo Trailer, 5' Inside Height, Single Rear Door 3000# GVW.....\$1,795

6'x12' Single Axle Utility Trailer, 3000# GVW, 15" Wheels and Tires Wood Floor.....\$1,290

18' 10,000# Deck Over Trailer, 16' Flat with 2' Dovetail.....\$2,995

18' 12,000# Construction Trailer, 81" Between the Fenders, Ramps.....\$2,450

Demo.....Special \$2,450

Single and Tandem Axle Aluminum Utility Trailers...Starting at \$1395

6 Ton 23' Gooseneck Flatbed Trailer, 18' Flat with 5' Flip Up Dove Tail.\$4,595

12 Ton Econoline Low Boy Trailer, 18' Flat with 5' Dovetail and Ramps, Bogi Axle.....\$5,195

**LIVESTOCK TRAILERS**

6'x12' Moritz Horse Combo, 7' High, Removable Breast Bar, Red.....\$3,295

6'x14' Corn Pro Bumper Pull Livestock, Divider Gate, Torsion Axles...\$2,995

6'x16' Corn Pro Bumper Pull Livestock, Divider Gate, Torsion Axles...\$3,095

6'x16' Moritz Bumper Pull Livestock, Divider Gate, 10,000# GVW, 7' Inside Height.....\$3,595

6'8" wide x 16' Long Moritz Gooseneck Livestock Trailer, No Inner Fender Wells, 10,000# GVW.....Special \$4,450

7'x16' Moritz Gooseneck Livestock, 7' High, 10,000# GVW.....Special \$4,595

More In Stock Call For More Details

**Hostetler Truck Bodies & Trailers**

Rt. 322 Milroy, PA 17603

(717) 667-3921



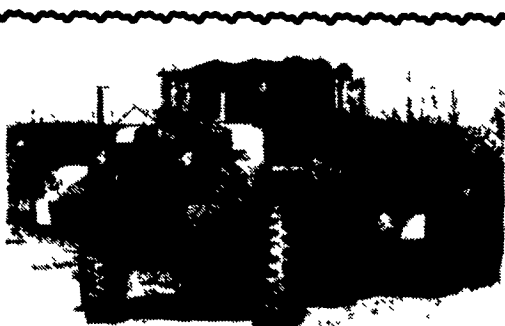
**TIRONIE TARP**

21" TARP STRAPS...\$23<sup>95</sup> per 50  
2"x27" HEAVY DUTY RATCHET ASSEMBLY...\$19<sup>95</sup>  
SHOP AROUND - THEN CALL  
**1-800-874-2928**  
FAX: (717) 584-3127

**TRUCKCRAFT**



**PICKUP INSERT DUMPER**  
For FREE brochure, call toll free 24 hr.  
**1-800-755-3867**



**MACK 6x6 TRUCKS**

Cummins V8 Diesel Jake and full Air Brakes P.S. 1400/24 Tires Double Frame Rear Drag Winch (50,000 lbs.). Differential Locks. (60 Tons) Hauling Capacity. Like New Only 800-17,000 Miles. A must for every Farmer.

**\$3,500 to \$12,500**

(814) 834-1018 St. Marys, PA

*Caliber Motors*

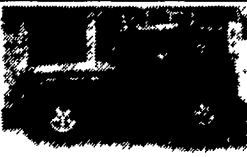
Mon-Fri 9-9  
Sat 9-5

5466 Manheim Pike • East Petersburg **560-7779**

**QUALITY PREOWNED CARS & TRUCKS**

BANK FINANCING AVAILABLE • MOST CARS WARRANTED

ALL CARS SERVICED & INSPECTED BY ASE CERTIFIED MECHANIC



'93 Jeep Wrangler

SIX TO CHOOSE FROM!



'91 Chev Silverado 4x4

350, Auto, AC, Tilt & Cruise,  
Blue & Silver



'88 Ford F-250 Custom 4x4

Lock Outs, 4-9 6-Cyl, 4  
Speed Overdrive, Dark Blue



'91 Ranger XLT 4x4

6 Cyl, 4 Speed Overdrive, AC,  
Tilt & Cruise, Alloy Wheels

717-560-7779

**CASH**

FOR USED

**DIESEL TRUCKS!**

WE NEED 1/2 TON TO ONE TON:

- FORD DIESELS
- SUPERCABS
- CREW CABS
- DODGE CUMMINGS
- 2WD or 4x4
- DUALIES
- DUMPS
- UTILITY BODY
- FLAT BEDS
- CAB & CHASSIS

PLEASE! PLEASE! PLEASE! PLEASE!

Before you sell or trade your diesel in somewhere else for LESS,

CALL US!

We Pay More for Used Diesel Trucks Than Anyone.

TRY US!

717-949-2000

Ask for Smokey or Kay



RD 7, Box 405  
Lebanon, PA 17042



**COCKRELLS AUTO SALES**

5270 East Trindle Rd.  
Mechanicsburg, PA  
717-766-4227

**TRUCK SPECIALS**

'86 Ford F150 Ext Cab 4x4 Pickup V8, Auto, AC, Only 54,000 Miles, 6 Months/6,000 Mile Warranty **\$9,860**

'83 Ford F350 Crew Cab Dually, Tan & Cream 460 V-8, 84,000 Orig. Miles, Centurian Conv **\$9,660**

'90 GMC K1500 4x4 SLE 5 Speed, Power Windows, Locks, Cruise, AC, Cassette 6 Months/6,000 Mile Warranty **\$14,380**

'90 GMC C-1500 SLE White, 350 V8, Auto, AC, Power Windows, Locks, Tilt, Cruise & Cassette 36,000 Miles 6 Months/6,000 Mile Warranty **\$12,980**

'88 CHEV SUBURBAN 4X4 Silverado Red & Gray 350 V 8 Auto AC Loaded **\$9,980**

'86 CHEV C-10 PICKUP SILVERADO V8 Auto AC Power Windows Locks Tilt Cruise & Cassette 6 Months/6,000 Mile Warranty **\$7,980**

OVER 100 CARS & TRUCKS IN STOCK

**TRUCKS**

- '93 F250 4X4 SUPER CAB, XLT 7.3L Diesel, auto, Trans, A/C, Loaded
- '89 F350 CREW CAB DUALLY, XLT 460 V-8, 5 Speed, A/C
- '83 CHEVY 3500 4X4 S/CAB V-8, A/O/D, A/C, Silverado package
- '89 DODGE D-250 A/C, A/T, Cruise, Power Windows, Work Ready
- '93 E350 CUBE VAN V-8, A/O/D, A/C, 16,000 Miles
- '92 DAKOTA SUPER CAB 6 Cyl., A/T, A/C, LE Package
- '93 RANGER XL 2.3 L, 5 Speed, Only 12,000 Miles
- '92 F150 4X4, XLT A/C, 302 V-8, A/O/D, Loaded
- '89 CHEVY 1800 4X4 V-8, 5 Speed, Scottsdale Package
- '92 RANGER XLT V-6, A/O/D, A/C, 25,000 Miles

**CARS**

- '90 TAURUS GL SEDAN 3.0 L, A/O/D, A/C, Power Equipment
- '92 CHRYSLER NEW YORKER V-6, A/C, Only 388,000 Miles
- '93 EAGLE VISION ES1 A/C, A.T., 1 Owner, 18,000 Miles
- '88 ESCORT GT 5 Speed, A/C, 46,000 Miles
- '90 MUSTANG LX HATCHBACK 2.3 L, A/C, 5 Speed, 35,000 Miles
- '89 TAURUS GL SW 3.0 L, A/O/D, A/C, Power Equipment
- '89 PROBE LX A/C, A/O/D, 1 Owner, 35,000 Miles
- '89 MAZDA MX-6 LX, A/O/D, A/C, 1 Owner
- '93 LINCOLN TOWN CAR Loaded, Carriage Floor
- '92 CROWN VICTORIA LX SEDAN 1 Owner, 30,000 Miles

**MPV'S**

- '92 JEEP RENEGADE 6 Cyl., A.T., A/C, 17,000 Miles
- '92 WRANGLER SAHARA 4.0 L, 5 Speed, A/C, Soft Top
- '90 WRANGLER 4.0 L, 5 Speed, A/C, Hard Top
- '93 WRANGLER 5 Speed, 20,000 Miles
- '93 ISUZU RODEO A/C, 5 Speed, 20,000 Miles
- '92 AEROSTAR XLT All Wheel Drive, Dual A/C, Cruise, 6 Chairs
- '92 EXPLORE XL 5 Door, A/O/D, 107 Miles
- '91 EXPLORE 2 Door, A/C, A/O/D, Eddie Bauer Pkg.
- '90 JEEP CHEROKEE Limited, 4 Door, Loaded
- '89 GMC SAFARI CONVERSION VAN 6 Cyl., A.T., A/C

**ENGLE-RISSINGER AUTO GROUP**

Rt. 147 Just North of Halifax  
Halifax, PA 17032  
The Calls On Us 1-800-242-3075  
1-717-890-3421