

Nearly 300 Animals Compete

(Continued from Page B23)

Judges in the Holstein ring were Jim Curtis of Morrisville, New York, type. Kim Kriebel, Tunkhannock, fitting and Becky Sonnen Bube, Lancaster. Glenn Tripp, Little Genesee, New York judged type in the protein breeds while Irene Benner Osborne, of Millerstown, judged the fitting and Mat Stewart, of Alfred, New York judged the showmanship.

A listing of the top three placings in each class follows:

NORTHEAST PENNSYLVANIA 4-H DISTRICT DAIRY SHOW

RESULTS HOLSTEIN

Spring Calf: 1. Esbern Brokr Connies Legacy, owned by Olivia Courtney, of Tioga County. 2. Maple Flat Tiger Cat Raven, owned by Danielle Sparling, of Bradford County. 3. Cha-Do Encore Chi-Chi, owned by Shane Porter, of Tioga County.

Winter Calf: 1. Cha-Do Blackstar Tara, owned by Trisha McIlwain, of Tioga County. 2. Esbern Choice Sharl Sandy, owned by Charity Courtney, Tioga County. 3. Pack Herd Broker Bacca, owned by Amy Packard, Bradford County.

Fall Calf: 1. Pack Herd Encore Bazuka, owned by David Packard, Bradford County. 2. Jon-Ann Starbuck Daisy, owned by Stanley Bonavita, of Susquehanna County. 3. Snowcrest Aerostar Sandy, owned by Scott Walrath, of Bradford County.

Summer Yearling: 1. C Ennea Broker Pearl, owned by Kenadal Miller, of Susquehanna County. 2. Maple Flat Encore Lilac, owned by Danielle Sparling, of Bradford County. 3. Cha-Do Jackpot Tango, owned by Trisha McIlwain, of Tioga County.

Spring Yearling: 1. Du Mar Chairman Val Johanna, owned by Heidi Alderfer, of Bradford County. 2. Du Mar Chairman Val Estrella, owned by James Alderfer, of Bradford County. 3. Pack Herd Skybuck Batu, owned by David Packard, of Bradford County.

Winter Yearling: 1. C Ennea Broker Audrey, owned by Matthew Pease, of Susquehanna County. 2. C Ennea Broker Audrey, owned by Matthew Pease, of Susquehanna County. 3. Esbern Raider Sharon Stella, owned by Charity Courtney, of Tioga County.

Fall Yearling: 1. C Limbra Satan Delia, owned by Matthew Pease, of Susquehanna County. 2. Braund Valley Jonah Kessy, owned by Jill Sheeley, of Bradford County. 3.

Spungold Thor Booboo, owned by Danielle Sparling, of Bradford County.

Dry Cow 2 years and over: 1. Robbins Amador Christine, owned by Janice Robbins, of Columbia County. 2. Jericho Dairy Starbuck Maci, owned by Beth Nebzydoski, of Wayne County. 3. La-Wynds Marvel Susan, owned by Laura Fitch, of Tioga County.

Junior 2-year-Old: 1. Rocky Slope C Nick Lulu, owned by Chad Neal, of Tioga County. 2. Braund Valley Potential Kel, owned by Aaron Sheeley, of Bradford County. 3. Cha-Do Calypso Starbuck Babe, owned by Laura Fitch, of Tioga County.

Senior 2-year-Old: Braund Valley Dale Kayla, owned by Jill Sheeley, of Bradford County. 2. Braedawn Jethro Destiny, owned by Lillian Lunde, Bradford County. 3. J-Long-

Vu Leadman Ariel, owned by Joshua Millron, of Wyoming County.

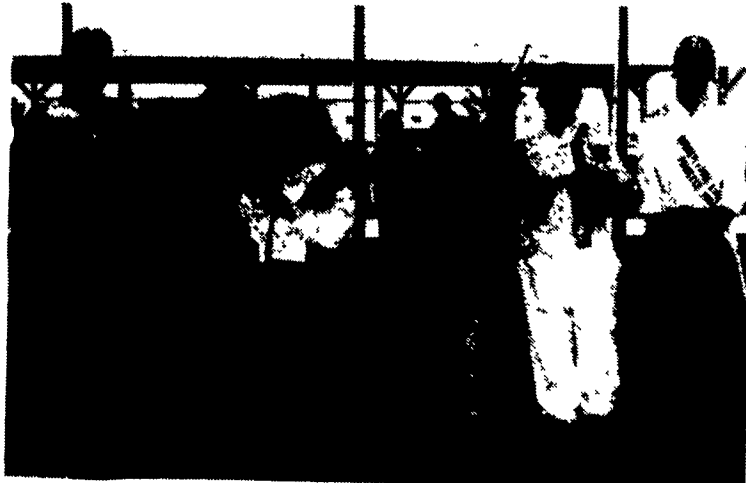
Junior 3-year-Old: 1. Cha-Do Aerostar Tally, owned by Trisha McIlwain, of Tioga County. 2. Du Mar Leadman Daffodil, owned by James Alderfer.

Senior 3-year-Old: 1. Bishcroft Gabriel Daisy, owned by Richard Bishop, of Tioga County. 2. Snowcrest Blackstar Liza, owned by Melissa Walrath, of Bradford County.

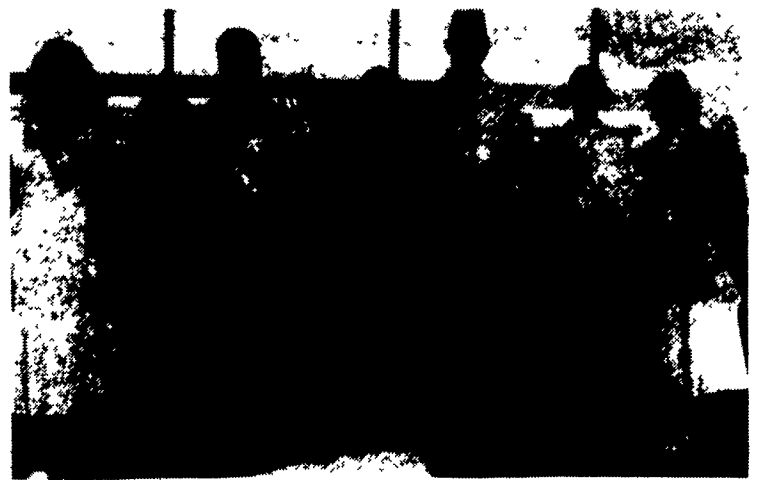
4-year-Old: Gor-Wood-D Star-B Splendor, owned by Heather Wood, of Tioga County. 2. Esbern Blackstar Mar Moe, owned by Olivia Courtney, of Tioga County. 3. Long-Brook Bell Maple, owned by Abigail Wilson, of Wyoming County.

5-Year Old: 1. Esbern Tony Echo, owned by Charity Courtney, of Tioga County. 2. C Caverhill Rhonda Starbuck, owned by Shelly Woodmansee, of Wayne County. 3. Curleydell Hi-De-Ho Becky, owned by Sarah Curley, of Susquehanna County.

Six Years and Over: 1. Jericho Dairy FPMT



In the Brown Swiss breed, Darryl Marshall, second from right, showed the junior champion, and Kristina Baker showed the reserve junior champion. Shown with the champions are Tioga County Dairy Princess Laura Fitch and Pa. Ayrshire Princess Karen Neville.



Jason Butler, third from left, had the grand champion Brown Swiss, while Jesse Bechtel showed the reserve grand champion. From left, Bradford County Dairy Princess Jani Burke, Pa. Ayrshire Princess Karen Neville, and National Guernsey Princess Charlene Shupp.

Diane Dixie, owned by Shelly Woodmansee, of Wayne County. 2. Jericho Dairy Heidi Celeste, owned by Shelly Woodmansee of Wayne County. 3. C Jockbrae Maxine Marlin, owned by Robert Wilson, of Wyoming County.

Best Bred and Owned: Braund Valley Dale Kayla, owned by Jill Sheeley.

JERSEY

Spring Calf: Nobledale Lester Line Lucky, owned by Allison Gorenflo. 2. Eastmont Dailia, owned by Samantha Wilcox. 3. Jer-Sweet Imperial Lavender, owned by Rynell Marie Barker.

Winter Calf: 1. Little Pond Sky Line Daisy, owned by Matthew Watson, of Bradford County. 2. Little Pond Carmel Sugar Plum ET, owned by Martin Watson, of Bradford County. 3. J Imperial Panda, owned by Ryan Sprout, of Susquehanna County.

Fall Calf: 1. Stoney Knob Brittney, owned by Tricia Sweely, of Tioga County. 2. Jer-Sweet Imperial Rubys Diamond, owned by

Kent Charles Barker, of Potter County. 3. JM Corine CC Carrot, owned by Kyle Howland, of Bradford County.

Summer Yearling: 1. Normandell Dexter Emily, owned by Emily Norman, of Tioga County. 2. Judy Carmel Camy, owned by Raenna Abeil. 3. Brian's Best Maximum, owned by Brian Warburton, of Sullivan County.

Spring Yearling: 1. Sooner Dixie of Rog-Al, owned by Cris Wood, of Tioga County. 2. Bri-Pa-Ti-Ma Valerian Jessie Lyn, owned by Tiffany Geasford, of Susquehanna County. 3. Jer-Sweet Imperial Teresas Te-Te, owned by Rynell Marie Barker, of Potter County.

Winter Yearling: 1. Ter-Lin Hunter Bingo, owned by Stefanie Long, of Tioga County. 2. Poke-A-Long Gibso Punkin, owned by Lucas Zebrowski, of Susquehanna County. 3. Swingles Royal Cherry, owned by Talitha Coolbaugh, of Bradford County.

Fall Yearling: 1. Jer-Sweet Imperial Rubys Germ, owned by Kent Barker, of Potter County.

(Turn to Page B25)

HARMAN WOOD & COAL

STOVES Built To A Standard Not A Price

LEACOCK

Coleman CENTER

89 Old Leacock Rd
Ronks, PA 1717-798-7174

Stoker, Furnaces Etc.

Schumacher

6 AND 12 VOLT BATTERY TESTER

Shows battery condition, provides load capacity test, starter motor condition and full charging system analysis.

Chrome plated steel case with large, easy-to-read meter, heavy duty insulated battery clamps and surface protecting rubber feet.

PEQUEA BATTERIES

103B - North Ronks Rd., Ronks, PA 17572

717-687-0880

• Agricultural • Commercial • Residential

Partial In-Ground Tank Featuring Commercial Chain Link Fence (5' High - SCS approved)

• Retaining Walls • Bunker Silos • Manure Storage, Etc.

MAHONING OUTDOOR FURNACES

"The Natural Way To Heat Your Home"

Burns Coal, Wood, Oil or Natural Gas

FUEL USED IN STANDARD UNIT: WOOD & COAL & WOOD BY-PRODUCTS (SAWDUST, PAPER, ETC.) FUEL USED IN MULTI-FUEL MODEL: SAME AS ABOVE INCLUDING OIL, PROPANE, NATURAL GAS

Efficiency Rating 83% to 85% - Cut Emissions by 90%

3-Year Warranty Except Electrical Components (1 Year)

35 Years Heating Experience

PROUDLY BUILT IN INDIANA COUNTY, PENNSYLVANIA

100,000 - 500,000 BTU 36"-60" Fire Boxes

★ The only outdoor furnace made with a Catalytic Combuster. ★ Mahoning Catalytic Combuster Will Help In The Following Ways:

1. Burn one cord of wood which equals 166 gallons of oil.
2. Your fuel source becomes enormous inexhaustible and poses few risks to public safety.
3. Overall efficiency of 85% which means the heat no longer goes up the chimney!
4. You get more heat from a log compared to the non-cat furnace.
5. More burn time - less reloading time!
6. Zap 90% of pollutants, made from fire source.
7. Saves you a lot of money!
8. User friendly, emits no smoke!

SCHOENLY'S NURSERY

5510 Boyertown Pike, Birdsboro, PA 19503

(610) 689-5230

Cut Your Heating Cost With Our Outdoor Furnace

LET OUR EXPERIENCE WORK FOR YOU-ESTABLISHED SINCE 1979!

WE ORIGINATED THE CONCRETE SYSTEM!

Sizes And Layouts To Your Specifications

We Work Hard For Customer Satisfaction!

GROFFDALE CONCRETE WALLS INC.

430 Concrete Ave., Leola, PA

717-656-2016

Authorized Dealer For **KEYSTONE CONCRETE PRODUCTS**

- H-Bunks
- J-Bunks
- Trench Silo Walls
- Hog & Cattle Slats