

Ephrata Fair's Grand Slam Award Can Bring In Big \$ For Exhibitors

ANDY ANDREWS
Lancaster Farming Staff
EPHRATA (Lancaster Co.) — You can pitch baseballs at ceramic plates and win a stuffed lion for your sweetheart.

You can spend a lot of money doing that, however.

But if you're smart, you can compete in the Ephrata Fair Grand Slam Award contest and win \$250, in addition to premium money for individual exhibits, at this year's fair.

How do you do that? Simple, according to Henry Keener, Clay, co-chairman of the event.

According to Keener, the grand slam contest (which he proposed at the meeting of the fair committee last year) "would consist of the accumulation of points that the exhibitors are gaining in all of the different phases." As the plans were finalized, both youth and open show exhibitors in the grain tent contests have a chance to compete in the Grand Slam. The contest, according to the fair book rules, is based on the total points

acquired for all items entered in all 26 classes in the grain tent.

The categories are:

• Section 1 — Grain and Seed Crops. Class 1: corn, yellow dent (10 ears); Class 2: corn, yellow dent (30 ears). Small Grain. Class 3: oats; Class 4: wheat; Class 5: winter barley; Class 6: rye; and Class 7: soybeans.

• Section 2 — Hay. Class 1: alfalfa, first cutting, not over 50 percent of grasses; Class 2: alfalfa, later cutting, not over 50 percent of grasses; Class 3: other legumes, not over 50 percent of grasses; Class 4: grass, first cutting, not over 10 percent legumes. Class 5: grass, second cutting, not over 10 percent legumes; Class 6: mixed hay, any mixture not classified above; and Class 7: summer annual grasses (sorghum, sudan, etc.).

• Section 3 — Silage. Class 1: small grain haylage; Class 2: corn silage; Class 3: high moisture shelled corn; Class 4: high moisture eared corn; Class 5: grass haylage, more than 50 percent grass; and Class 6: legume haylage, more

than 50 percent legume.

• Section 5 — Tobacco. Class 1: cured, type 41 (5 stalks, one lath); Class 2: green, type 41 (5 stalks, one lath); and Class 3: Maryland

type.

• Section 6 — Adult Farmer Pumpkin Exhibit. Class 1: best shape; Class 2: largest size; and Class 3: best decorated.

An exhibitor can place only one exhibit in each class. Also, premiums are paid only to fifth place. Grand slam points are awarded

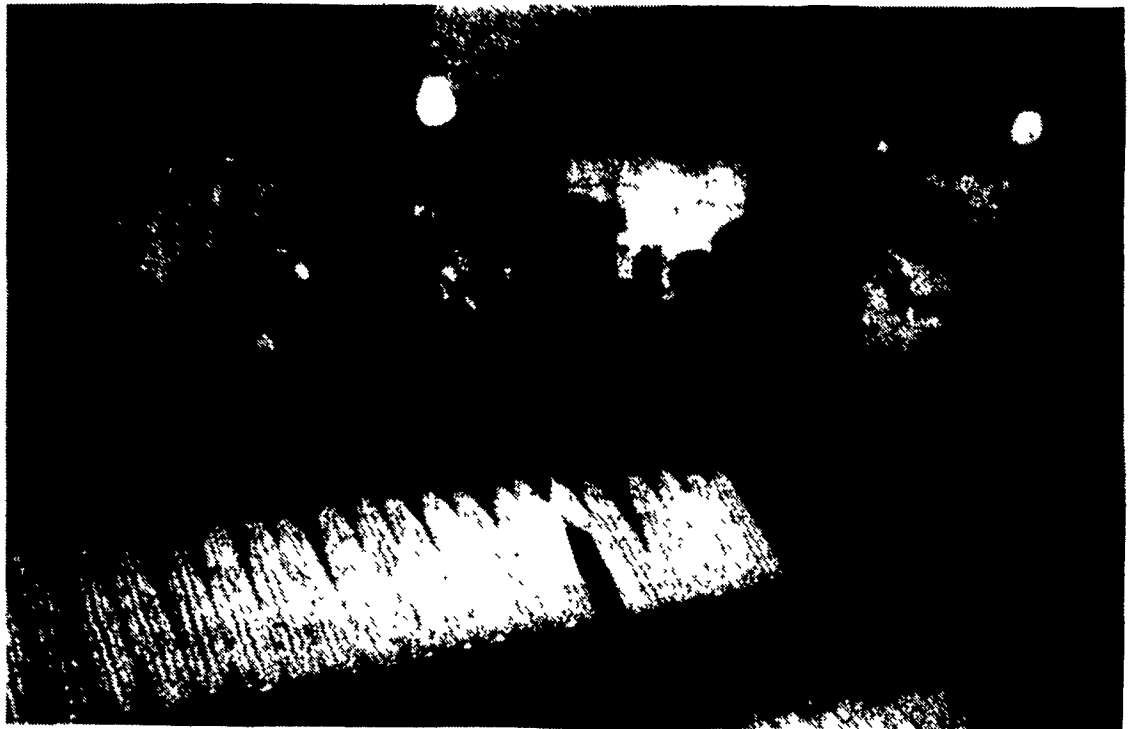
(Turn to Page B16)



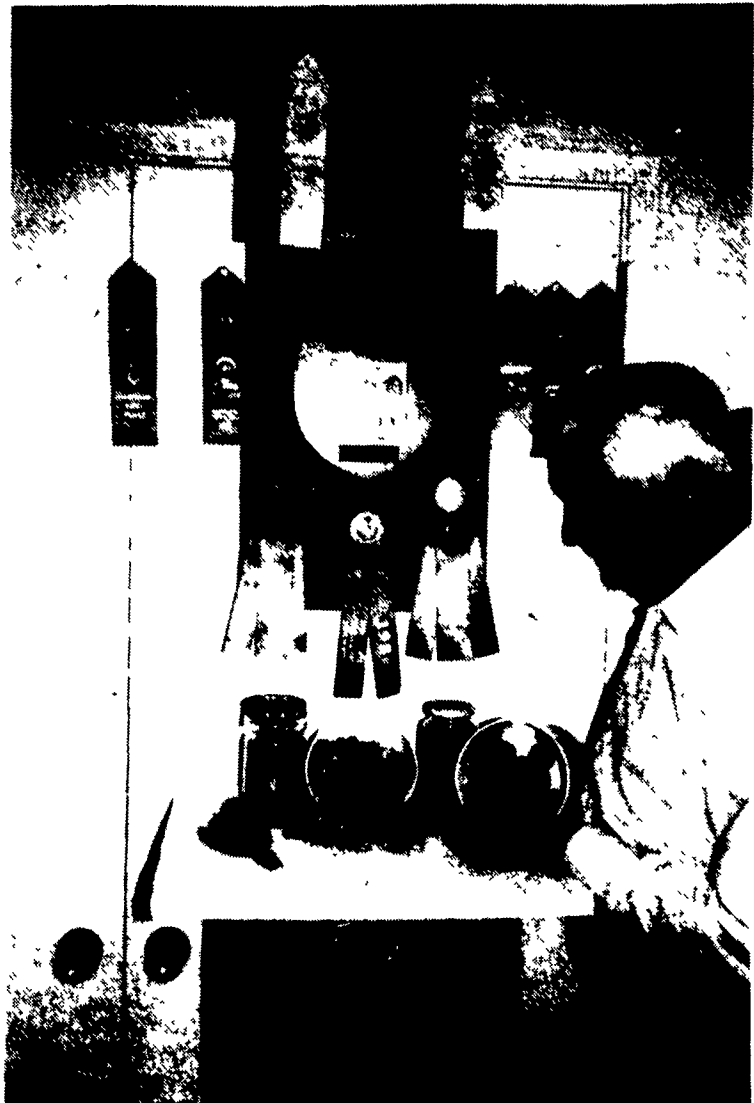
Leroy Horst, Bowmansville, auctioneer, judged last year's Ephrata Fair hay contest. This year the contest will be judged by Frederic H. Stillwagen, Allentown, educational consultant for Cyanamid.



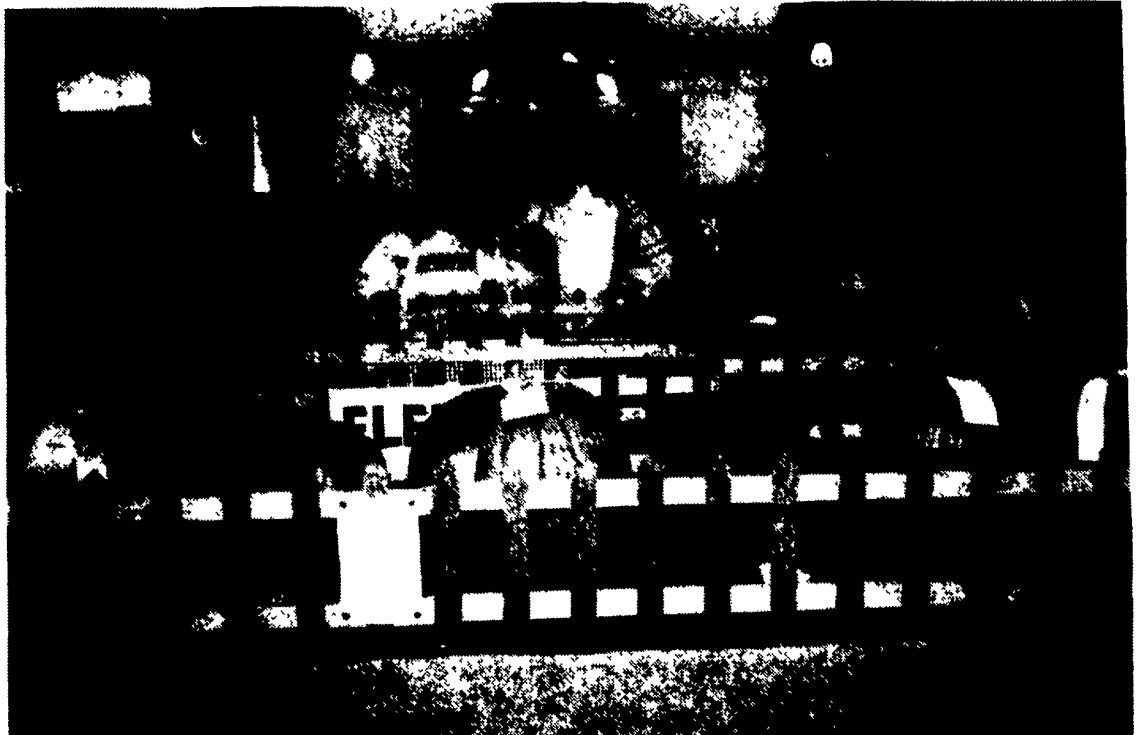
An exhibitor at last year's Ephrata Fair's grain contest inspects a row of ears.



Ernie Orr, Ephrata High School ag science teacher, holding corn, demonstrates what makes quality ears at last year's Ephrata Fair corn contest display.



Henry Keener, co-chair of the Ephrata Fair Grand Slam Award contest, examines some nuts in front of the various awards he has collected in past state and county contests.



Becky Ansel, Stevens, left, and Courtney Myers, Akron, inspect the pumpkin contest display at last year's Ephrata Fair. This year, the Grand Slam Award contest will award points to a exhibitor for each class. This is the first year for the Grand Slam Award, which honors the first-place winner with \$250.