

Hog Markets



S & J Villari Livestock Feeder Pig Sale

Millsboro, Del.
Friday, Sept. 9, 1994
Report Supplied by Auction
637 HEAD
30-29 LBS. 38.00-64.00; 40-49 LBS. 40.00-50.00; 50-59 LBS. 41.00-53.00; 60-69 LBS. 44.00-46.00; 70-79 LBS. 43.00-44.00; 80-89 LBS. NOT AVAILABLE; 90-99 LBS. NOT AVAILABLE; 100 LBS. AND UP 30.00-36.00.

State Graded Feeder Pig Sale

Carlisle Livestock Market, Inc.
Friday, Sept. 9, 1994
RESULTS ON 1179 PIGS.
TREND: COMPARED TO AUG. 26, STATE GRADED SALE PIGS WERE 3.00-8.00 HIGHER, SPOTS 12.00 HIGHER ON LIGHT PIGS. ALL PIGS WERE WEIGHED ON ARRIVAL AND SOLD BY THE HUNDRED WEIGHT.
US #1&2: 957 HEAD. 101 HEAD 39-40 LBS. 62.00-71.00; 204 HEAD 42-49 LBS. 64.00-72.50; 366 HEAD 50-59 LBS. 55.00-66.00; 286 HEAD 60-80 LBS. 54.00-61.50.
US #2: 140 HEAD. 79 HEAD 39-49 LBS. 45.00-60.50; 61 HEAD 59-80 LBS. 40.00-60.00.
US#2&3: 18 HEAD SMALL LOTS 43-60 LBS. 41.00-57.00.
UTILITY: 15 HEAD 15-70 LBS. 5.00-44.00.
AS IS: 49 HEAD 39-75 LBS. 20.00-24.00.
NEXT STATE GRADED FEEDER PIG SALE FRIDAY, SEP. 23. SALE TIME 1:30 P.M. GRADING 7:30-11 A.M.

Indiana Hogs

Louisville, Kentucky
Thursday, September 15, 1994
INDIANA-OHIO DIRECT HOGS FLASH: BARROWS AND GILTS: 25 TO MOSTLY .50 LOWER. DEMAND MODERATE.
COUNTRY: PLANTS: US 1-3 230-260 LBS. 34.50-36.00, 35.00-36.50, INSTANCE 36.25-36.75 36.75-37.00 US 2-3 230-260 LBS. 32.00-35.00, 210-230 LBS. 31.00-33.00.
SOWS: STEADY.
US 1-3 300-500 LBS. 21.00-25.00, 500-650 LBS. 25.00-29.00, FEW 30.00.
PRELIMINARY ESTIMATE: **33,000.
***RECEIPTS HAVE CHANGED DUE TO CHANGE IN REPORTING BASE.

New Holland Feeder Pigs

New Holland, PA
Wed., September 14, 1994
Report Supplied by Auction
TODAY: 599 HEAD
LAST WEDNESDAY: 950 HEAD
LAST YEAR: 610 HEAD
TREND: COMPARED TO LAST WEDNESDAY, FEEDER PIGS 3.00-10.00 HIGHER. ALL PIGS WEIGHED ARRIVAL AND SOLD BY THE HUNDRED WEIGHT.
GRADE 1-2: 69 HEAD 35-39 LBS. 60.00-64.00, WEIGHTED AVERAGE 38.59, WEIGHTED PRICE 60.37; 113 HEAD 41-48 LBS. 51.00-66.00, WEIGHTED AVERAGE 44.8, WEIGHTED PRICE 59.39; 204 HEAD 50-55 LBS. 54.00-57.00, WEIGHTED AVERAGE 52.71, WEIGHTED PRICE 55.48; 110 HEAD 61-69 LBS. 51.00-58.00, WEIGHTED AVERAGE 61.62, WEIGHTED PRICE 54.62; 12 HEAD 75-79 LBS. 50.00-52.00, WEIGHTED AVERAGE 78.33, WEIGHTED PRICE 51.84.
US#2: 18 HEAD 44-48 LBS. 51.00-54.00, WEIGHTED AVERAGE 45.56, WEIGHTED PRICE 52.77.
US#2-3: 5 HEAD 36 LBS. 58.00, WEIGHTED AVERAGE 36.00, WEIGHTED PRICE 58.00; 7 HEAD 61 LBS. 48.00, WEIGHTED AVERAGE 61, WEIGHTED PRICE 46.00.
SLAUGHTER: 11 HEAD 20 LBS. 165.00, WEIGHTED AVERAGE 20, WEIGHTED PRICE 165.00; 15 HEAD 25-27 LBS. 72.00-100.00, WEIGHTED AVERAGE 26.73, WEIGHTED PRICE 75.49.

Lancaster Hogs

Lancaster Stockyards
Saturday, September 10, 1994
Report supplied by auction
There will no longer be a sale auction on Saturday. Sales will be held Monday and Wednesday.

New Holland Hogs

LANCASTER, PA
SEPTEMBER 12, 1994
HOG RECEIPTS TODAY 900
HOGS: Trend not comparable, market not reported last Monday because of Holiday.
BARROWS AND GILTS: US 1-2 210-250 lb 35.00-36.00.
US 1 210-240 lb 38.00-39.25.
US 1-3 210-260 lb 34.50-35.25.
US 2-3 270-290 LB 33.50-34.50.

Hay & Grain Markets



Diffenbach Auction Center

New Holland, Pa.
Monday, September 12, 1994
Report Supplied by Auction
TOTAL LOADS: 112.
ALFALFA: 55.00-132.00.
MIXED HAY: 52.00-160.00.
TIMOTHY: 70.00-150.00.
CLOVER: 57.00-70.00.
ORCHARD GRASS: 85.00-92.00.
STRAW: 85.00-170.00.
EAR CORN: 83.00-92.00.
OATS: 2.20.
RYE: 4.00-4.75.
FIREWOOD: 57.00.

Kirkwood Hay Auction

Kirkwood, Pa.
Tuesday, September 13, 1994
Report Supplied by Auction
31 LOADS OF HAY.
MIXED HAY: 1ST CUTTING 56.00-58.00, 2ND 75.00-109.00.
TIMOTHY: 116.00-155.00.
ALFALFA: 1ST CUTTING 82.00, 2ND CUTTING 112.00, 3RD CUTTING 73.00-152.00.
GRASS: 95.00-151.00.
WHEAT STRAW: 103.00-147.00.
OAT STRAW: 103.00.
RYE STRAW: 102.00.
CORN: 63.00-77.00.
SALE TIME 11 A.M.

Westminster Hay

Westminster, Md.
Tuesday, September 13, 1994
Report Supplied by Auction
111 LOADS.
ALFALFA: 1.10-2.80 BALE.
TIMOTHY: 39.00-100.00, .80-2.10 BALE.
MIXED HAY: .60-1.70 BALE, 37.00-50.00 LARGE ROUND.
GRASS: 50.00, .80-1.90 BALE, 11.00-16.00 LARGE ROUND.
CLOVER: 1.70 BALE.
STRAW: 1.40-2.10 BALE.
MULCH: .40-.65 BALE.

Leinbach's Hay

Shippensburg, PA
September 10 and 13
Report Supplied by Auction
38 LOADS.
ALFALFA: FAIR 47.50-85.00, GOOD 90.00-115.00.
MIXED HAY: 40.00-82.50.
TIMOTHY: 60.00-65.00.
BROME GRASS: 78.00-100.00.
ORCHARD GRASS: 60.00-90.00.
STRAW: 115.00.
EAR CORN: 65.00-99.00.
WOOD: 47.50.

Green Dragon Hay

Ephrata, Pa.
Friday, Sept. 16, 1994
Report Supplied by Auction
71 TOTAL LOADS.
MIXED HAY: 58.00-130.00.
ALFALFA: 70.00-105.00.
TIMOTHY: 83.00-162.00.
ORCHARD GRASS: 40.00.
STUBBLE HAY: 32.00-39.00.
STRAW: 80.00-135.00.
EAR CORN: 80.00-111.00.
OATS: 1.95-2.40 BU.
RYE: 4.35-5.20 BU.
FIREWOOD: 37.00 LOAD.

Good's Hay

Leola, Pa.
Wed., September 14, 1994
Report Supplied by Auction
TOTAL LOADS: 51.
MIXED HAY: 60.00-150.00.
STRAW: 60.00-120.00.
TIMOTHY: 80.00-150.00.
CORN: 80.00-102.00.
ALFALFA: 85.00-105.00.
GRASS: 70.00-75.00.

Keister's Hay

Middleburg, PA
September 13, 1994
Report supplied by auction
50 LOADS, 30 LOADS OF HAY.
MIXED HAY 40.00-140.00.
ALFALFA: 100.00-115.00.
TIMOTHY: 100.00.
STRAW: 1 LOAD AT 90.00.
EAR CORN: 19 LOADS, 80.00-100.00.
RYE: 4.10-5.30 BU.
OATS: 1.70-2.30 BU.
BARLEY: 2.05 BU.
FIREWOOD: 110.00 LOAD.

North Jersey Market

Hackettstown, N.J.
Report Supplied by Auction
Tuesday, September 13, 1994
Hay—Straw & Grain Report
ALFALFA: 3 LOTS, 1.50-2.60 BALE.
MIXED HAY: 3 LOTS, 2.00-2.50 BALE.
TIMOTHY: 1 LOT AT 2.10 BALE.
GRASS: 12 LOTS, 1.00-2.20 BALE.
MULCH HAY: 2 LOTS, 1.10-1.25 BALE.
SHELLED CORN: 2 LOTS, 3.25 AND 7.00 BAG.
OATS: 2 LOTS AT 2.75 AND 6.00 BAG.
WHEAT: 1 LOT DIVIDED, 4.75 AND 5.25 BAG.
TOTAL LOTS: .26.

Regional Hay

September 12, 1994
Eastern, Pa.
HAY & STRAW MARKET FOR EASTERN PA - (ALL HAY NO. 2 AND BETTER. PRICES PAID BY DEALERS AT THE FARM & PER TON). HAY AND STRAW MOSTLY STEADY.
ALFALFA 70.00-105.00; MIXED HAY 70.00-100.00; TIMOTHY 65.00-105.00; STRAW 60.00-100.00; MULCH 25.00-40.00.
SUMMARY OF LANCASTER CO. HAY AUCTIONS FOR WEEK ENDING 9/9/94. PRICES PER TON: LOADS: 145 HAY, 43 STRAW & 27 EAR CORN.
ALFALFA 60.00-130.00; MIXED HAY 59.00-160.00; TIMOTHY 70.00-190.00; STRAW 80.00-164.00; EAR CORN 78.00-97.00.

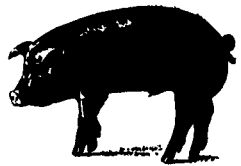
SUMMARY OF CENTRAL PA. HAY AUCTIONS FOR WEEK ENDING 9/9/94. PRICES PER TON: LOADS: 80 HAY, 6 STRAW & 37 EAR CORN.
ALFALFA 60.00-86.00; MIXED HAY 51.00-112.00; STRAW 50.00-80.00; EAR CORN 58.00-97.50.

Kutztown Produce Auction

Report Supplied by Auction
Saturday, September 10, 1994
TOTAL LOADS: 19.
ALFALFA HAY: 90.00-133.00.
GRASS HAY: 70.00-100.00, 1.75 BALE.
MIXED HAY: 68.00-88.00, 1.70 BALE.
STUBBLE HAY: 60.00.
OAT STRAW: 104.00.
WHEAT STRAW: 90.00-120.00.

Dewart Hay

Dewart, PA.
Monday, September 12, 1994
Report Supplied by Auction
8 LOADS OF HAY, 40.00-78.00.
STRAW: 1 LOAD AT 56.00.
WOOD: 5 LOADS, 26.00-49.00.
CORN: 1 LOAD AT 101.00.
OATS: 2 LOADS AT 1.55 AND 1.65 BU.



PIGS
STATE GRADED SALE
FRI., SEPT. 23
1:30 P.M.
AT
Carlisle
LIVESTOCK MARKET, INC.
Exit 12 Off I-81
(717) 249-4811 or
Evenings Jim, 249-2350

KIRKWOOD HAY AUCTION
Hay, Straw and Grain Auction
EVERY TUESDAY
11:00
Located Rt. 472 5 miles south of Quarryville or 6 miles north of Oxford corner of Rt. 472 and Noble Road.
Lloyd H. Kreider,
Auctioneer
AU-000513L
No out of state checks

PENNFIELD GRAIN BANK
Pennfield Offers A Sound Program For The Dairy Farmer To Use His Grain "Same As Cash" To Reduce His Monthly Feed Bill And To Avoid Having To Take "Harvest"
Prices Week Of 9/19/94
Corn \$2.68 Bu.
Soybeans \$5.73 Bu.
Barley \$1.80 Bu.
• No Storage Charges
• Prices Updated Weekly
• Grain Bank Balance Shown On Each Invoice
• No Hidden Charges
For every ton of qualifying dairy feed purchased you will receive one ton of grain bank hauled at no charge
pennfield feeds

In This Issue

COLUMNS
Now is the Time..... A10
On Being A Farm Wife..... B 3
Consuming Thoughts..... B 4
Family Living Focus..... B 5
Ida's Notebook..... B 7
You Ask..... B15
E-I-E-I-O..... C 2

DEPARTMENTS
Editorial..... A10
Farm Calendar..... A10
Farm Forum..... A10
Futures..... A16
EPA Compliance..... A44
Classified Ads..... C 4, D 6
Business News..... D 5
Mailbox Markets..... E 6
Sale Reports..... E11
Public Auction Register..... E12

DAIRY
DHIA Focus..... A35
Chester Milk Lines..... A36
Lancaster DHIA..... D 2
Pa.DHIA Report..... E2

FEATURES
Chester Co. Steer..... A20
Denver Sheep..... A22
Perry Co. Fair..... A23, A26
York Sheep..... A24
York Beef Cattle A25, A33, A34
Solanco Hogs..... A27
Solanco Sheep, Beef..... A28
Chester Co. Swine..... A34
South Mountain Dairy Show A40
Juniata Fair..... A41
Dauphin 4-H Fair..... A42
Md. Fair Youth Holsteins.. A46
Cookbook Benefits..... B12
Ephrata Fair Preview..... B16
N.E. 4-H Dairy Show..... B22
Md. Fair Colored Breeds..... C 3
York Fair Beef..... D 4

HOME AND YOUTH
Homestead Notes..... B 2
Home On The Range..... B 6
Cook's Question Corner..... B 8
Kid's Korner..... B10
Farm Women Societies..... B18
4-H Happenings..... B14
FFA Happenings..... B15

Walter M. Dunlap and Sons offers all cattle feeders two marketing days. Give us a call for advice and marketing conditions.

MONDAYS OR WEDNESDAYS

Consign With Us - For The Marketing Edge

Next Feeder Cattle Sale
Wednesday, September 28 - 11:00 A.M.

Walter M. Dunlap and Sons
Lancaster Stockyards
Tel. (717) 397-5136
An Old Line Commission Firm Keeping Abreast With The Times