

Public Auction Register

Closing Date Monday 5:00 P.M.
of each week's publication

SAT. OCT. 8 - 1PM, Farm Real Estate Auction. Located In Dickinson Township, Cumberland Co., From Carlisle Exit 12 Off I-81. Travel S. On 465, 6 Mi. Towards Mooredale, Turn Left On Mount Sera Rd., Continue To Sale. Owners, Nancy, Angie & Larry Stone. Kevin M. Wickard, Aucts.

SAT. OCT. 8 - 1PM Real Estate located along Rt. 897, 1 1/2 mile Southeast of Blue Ball, Owner: Amos R. & Laura Horning. Nevin Martin & Sons, Auct.

SAT. OCT. 8 - 1PM, Valuable Mifflin Co. Property House With 3 +/- Acres. Located RD#1, McClure, Pa. From Harrisburg Take Rt. 322 West To Lewis-town, Then Rt. 522 North Approx. 13 Miles To Mail Pouch Tobacco Barn, Turn Left, Follow Signs 1 1/2 Miles To Property. Wagner's Auction Service.

SAT. OCT. 8 - 4PM 2.9 acre poultry farmette, broiler operation, real estate. 173 Middle Creek Rd., Ephrata Twp, Lanc. Co. Rt. 322 W. of Ephrata, turn south onto Woodcorner Rd. at Paul B. Zimmerman's, right onto Meadow Valley Rd., left onto Middle Creek Road. By Marvin B. & Karen H. Zimmerman. Horst Aucts.

MON. OCT. 10 - 9AM, Tractors, Trailers, Tools, Equipment, Cars, Truck, Jeep & Antiques. Located At 35 Steinmetz Rd., Ephrata, Lanc. Co., Pa. (Directions: Rt. 272, Between Ephrata & Akron, Turn East Onto Steinmetz At "Goodwill Store".) Terms By, Louis & Miriam Hurst Horst Aucts.

TUES. OCT. 11 - Feeder Cattle Fall Round-Up Sales, Westminster Livestock Auction.

TUES. OCT. 11 - 5PM, Gress Floor Service Of Inventory Reduction. Located At 728 E. Main St., New Holland, Pa. Terms By, J.E. Gress Floor Service. Horst Aucts.

TUES. OCT. 11 - 8PM, Special Feeder Cattle Sale. Located Carlisle Livestock Market, Inc. Exit 12 Off I-81. 249-4511.

WED. OCT. 12 - 7:30 PM Feeder Cattle Sale, Four States Livestock, Hagerstown, Md. Exit 29 off I-70

THURS. OCT. 13 - 6PM, Valuable Real Estate, Known As Hilltop Tourist

Home, 2 1/2 Acres M/L, Woods & Pasture w/Wire Fence, Zoned Agriculture. Located Turn Off Rt. 340 On 772 West In Inter-course, At King's Kountry Korner Keep Left On 772, 1/2 Mile To Sale At 3422A, West Newport Rd., Leacock Twp., Lanc. Co., Pa. Terms By, Elmer & Rebecca Jane Stoltzfus. Robert E. & Jeffrey R. Martin, Auct.

THURS. OCT. 13 - 6PM, Real Estate Auction. Located From Loganville Or Dallastown Take Rt.#214 (Dunkard Valley Rd.) Turn Onto Swamp Rd.

Heading Towards Winter-stown Go To Graydon Rd., T/R Go Approx. 2 Miles Property On Left Up Over Hill, Lots Available, Signs Posted. For Harvey & Harold Campbell. Bradley K. Smith, Auct.

FRI. OCT. 14 - Juniata Co. Weekend Retreat Located 12 mi. S. of Port Royal, just off Rt. 75. Sheila M. Dunlap, owner. Long's Auction Service.

FRI. OCT. 14 - 9AM Farm Equip., Tractor & Supplies. A&C Diffenbach Auction Inc, 100 W. Jackson St., New Holland, Pa.

FRI. OCT. 14 - 1:30PM, State Graded Feeder Pig Sale. Located At Carlisle Livestock Market, Inc. Exit 12 South Off I-81 Left Onto Alexander Spring Road (717) 249-4511.

PUBLIC AUCTION

Perry County Farm, Farm Equipment, Old Antiques, Collectibles & Household Sat., Oct. 15, 1994

9:30 A.M. Sharp

Located at RD 2 Newport, Pa. Perry Co. 8 mi. west of Newport and 6 mi. east of Ickesburg along Middle Ridge Rd.

42 Ac. Perry County Farm 12 Noon

A must see property with a two story log frame dwelling offering 3 bedrooms, 1 1/2 bath, modern kitchen with adjoining pantry, comfortable living room with open stairway, walk-in basement, cold cellar, new hot water heating system, running water and more. Buildings also include small bank barn with concrete barnyard, 26'x60' pole shed, 2 car garage, 2 story butcher shop - spring house comb. and other small outbuildings.

Property also offers 27 acres tillable productive farm ground, 3 acres pasture with spring fed pond, sev. everbearing fruit trees, 12 acres woodland with mature hardwood and 6x6 tree house on stilts.

This property situated in a very desirable location ideal for the gentleman farmer or outdoorsman offering lots of hardtop road frontage and having qualities gained in no less than a lifetime.

Real Estate Terms: 10% down payment. Other terms day of sale. Showing Saturday, Sept. 24 & Oct. 1 from 1:00-4:00 p.m. For more information contact auctioneer.

Collectibles, Household, Farm Related & Farm Equipment Starting at 9:30 a.m.

RALPH & JESSIE WAX,
Owners

Bryan D. Imes, Auctioneer
Phone 717-527-2449
AU-001656-L

Not Responsible For Accidents

PUBLIC SALE

2 STORY STUCCO DWELLING,
REAL ESTATE,
HOUSEHOLD GOODS, ANTIQUES
AKRON - EPHRATA TOWNSHIP
MONDAY, SEPT. 26, 1994

AT 4:00 P.M.

REAL ESTATE 6:00 P.M.

Located at 103 Maple Farms Road, Akron, Ephrata Township, Lancaster Co., PA.

2 STORY STUCCO DWELLING
DAYLIGHT BASEMENT - GARAGE

Call 859-3273 or 336-5481.

FURNITURE

FINE CONN ORGAN w/2 Keyboards; BOWLING MACHINE (by Chicago Coin Mach. Co.); FINE SLATE TOP POOL TABLE; Mahogany Bed; Mahogany Bonnet Chest; Cedar Chest; Sofa; Platform Rocker; Pressed Parlor Rocker; Walnut Office Desk; Parlor Rocker; Blanket Chest.

APPLIANCES: Maytag Wringer Washer; Refrigerators; Air Conditioner; 30" Elec. Stove; Color TV; Microwave; RCA VIDEO DISC PLAYER; APPROX. 100 MOVIES; File Cabinet; 2 Floor Radios; Picture & Frames.

CHINA & GLASSWARE

Service for 12 China "Harmony House"; Pressed & Pattern Glass; Teapot; Keystone Pretzel Can; Cook-ware; Iron Frypan; Flatirons; Canning Jars.

LINENS: 1941 National Geographic (Local Features); Many 45 RPM.

TOOLS: David Bradley Tractor; Toro Mower (Rear Bagger, Self-Propelled); Chain Saw; Antique "O-Tool Co. Workbench; Hand Tools; 40' Wood Ext. Ladder; Wooden Tub; Wood Wagon; Floor Jack; .22 Rifle; 12 Ft. Alum. Boat; Fishing Equipment; Bow & Arrows.

No Out Of State Checks Unless Accompanied By A Current Bank Letter Or Prior Arrangement With Auction Service.

Terms By:

CARRIE S. REDDIG ESTATE
HORST AUCTS.

T. Glenn (717) 859-1331 - (717) 738-3080
Timothy G. (717) 738-2132
Thomas A. "VOICES OF EXPERIENCE"

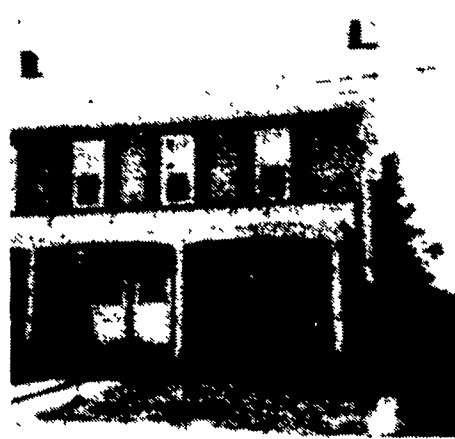
Investors — 1st Time Buyers

PUBLIC AUCTION
OF
REAL ESTATE

MON., SEPT. 26, 1994

Auction Time 6:00 P.M.

DIRECTIONS: Route 897 North to Reinholds, go past the fire hall, turn left on Mechanic Street. West Cocalico Twp., Lanc. Co.



31 Mechanic Street, Reinholds

Large 2 1/2 Story Semi-detached Home

Includes large modern kitchen with lots of wooden built-in cabinets, refrigerator, range, dishwasher, dining room, living room and full bathroom on first floor. Upstairs has 3 large bedrooms and attic access. Outside is maintenance free, large rear deck.

- Public water and sewer
- Large L shaped lot
- Aluminum siding
- Small barn
- Slate roof
- Full basement
- Oil H.A. heat
- Storm windows

TERMS: 10% down payment day of auction, balance at final settlement on or before November 1, 1994.

OPEN HOUSE: Saturday, September 10th, 1:00 P.M. to 3:00 P.M. or by appointment. For appointment or assistance to obtain financing call Aaron E. Martin Auct. at (717) 733-3511.

NOTE: This home needs some minor repairs and T.L.C. Be prepared to buy, owners plan to sell!

Attorney: Michael P. Kane
Auction By
SCOTT & TERRI ROBINSON



Aaron E. Martin (717) 738-4188
Richard L. Stauffer (717) 738-0296

PUBLIC AUCTION

REAL ESTATE

531 IRON BRIDGE LANE, DAUPHIN, PA.

THURSDAY, SEPT. 22, 1994
TIME: 7:30 P.M.

DIRECTIONS: FROM HARRISBURG, PA., TAKE RT. 22/322 WEST TO DAUPHIN. AT DAUPHIN, BEAR RIGHT ONTO RT. 225. THEN TURN RIGHT ONTO STONY CREEK ROAD. APPROX. 1 MILE, TURN RIGHT ON SINGER LANE. CROSS STEEL BRIDGE AND TURN RIGHT ONTO IRON BRIDGE LANE. 3RD HOUSE ON LEFT. SIGNS POSTED.

FISHERMAN'S DREAM

THIS PROPERTY HAS FRONTAGE ALONG STONY CREEK. ON THE FIRST FLOOR, THE HOME HAS A LIVING ROOM, EAT IN KITCHEN, DINING ROOM AND POWDER ROOM. THE 2ND FLOOR HAS 3 BEDROOMS AND A BATH. IT ALSO HAS AN ATTIC & BASEMENT, OIL HOT AIR HEAT, WELL & SEPTIC, 1 CAR GARAGE AND A SMALL SHED.

OPEN HOUSE WILL BE SUNDAY, SEPT. 4TH, SEPT 11 & SEPT. 18TH FROM 1:00 P.M. TO 4:00 P.M. ANY QUESTIONS PLEASE CALL MCNEAL'S AUCTIONEERING AT 717-545-5911.

TERMS FOR REAL ESTATE: CASH OR CERTIFIED CHECK IN THE AMOUNT OF \$5,000.00 MADE PAYABLE TO BRUCE BRANDT, FOR THE DOWN PAYMENT, DUE THE DAY OF THE AUCTION. SETTLEMENT WITHIN 45 DAYS.

WE WILL BE AUCTIONING A 1980 ROCKWOOD MICRO MINI MOTOR HOME. 18 FT. DATSUN, 4 CYL. 4 SPEED, 40,000 MILES.

AUCTIONEERS:
Richard and Rick McNeal
Lic #s AU-001380-L and
AU-002188-L
Phone: 717-545-5911

PUBLIC AUCTION

OF HOUSEHOLD GOODS,
FARM EQUIPMENT & TOOLS

SAT., OCT. 1, 1994

Sale at 9:00 A.M.

Located between New Holland & Leola. Turn off Rt. 23 on North Groffdale Road to Brick Church, Church Road turn left to sale. Lanc. Co., PA.

All New Furniture, Showroom
Samples & Stock

ATTENTION ATTENTION
ATTENTION

Furniture sold first at 9 A.M.

CHERRY, OAK & MAPLE Extension Tables, Drop Leaf Table, 2 - 4 pc, Oak Bedroom Suites, 2 - 48" Oak Hutches, 60" Cherry China Closet, Cherry Dry Sink, Oak Deacon Bench, 2 Single Bed Bookcase Head Boards.

20 Odd Kitchen Chairs, Press Back, Arrow & Others, 150 Rubber Chair Boots, Shuffleboard Table, Pictures w/Frames, Metal Office Desk, 200 - 2 1/2 x 2 1/2 Table Legs Maple, Oak & Cherry, 2 - 5' Radiator Hot Water Heat, 1 - 3' Radiator, Pine Finish, Oak Waste Boxes w/Swelled Lids, Mattress & Box Spring, Rag Carpet.

Elect. Speed Queen Wash Machine - like new, Elect. Maytag Washer - like new, Riteway Coal/Wood Stove, Westflex Overhead Router - Ideal for Crafts, Saws, Small Drill Cutter, Lathes, 2 Ton Chain Hoist, 200 Board Ft. Walnut Wood, 25 Gal. Berkley Catalyzed Lacquer, Heavy Duty Harness, Spring Wagon, Pulley, Hubs, V-Belts, Oak & Cherry Corner Cupboards, Grandfather Clocks Movements & Parts, many other items not mentioned.

Terms by
Fishercraft Custom-Built Furniture
At same location

8' Snowblower w/Ford Heavy Duty Industrial Engine, Honda 5000 KBA Generator, 8 Ton Rubber Tire Wagon & Bed, Steel Wheel Wagon, 120 & 220 Lincoln Generator & Welder, Farmall 400 Gas Wide Front Hand Clutch 2 pt. Hookup, 21" Snapper Lawn Mower Self-Propelled.

Massey Harris 33 Wide Front, No. 7 Mc. 5' Mower, 20 KBA John Deere Disc, 2 Better-bilt Manure Pumps, 12 Volt Seeder, 2 - 3 Section Gang Mowers, Vibrator Plate Packer, 3 Fore Carts, 2 LP Gas 140,000 New Heaters, 8 HP Slanic Diesel, 1 1/2 HP Elect. Motor, 150,000 BTU Reddy Heater, Warm Morning Coal Stove, Bucket A Day Stove, Pitcher Pump, 55 Gal. Plastic & Steel Drums, Pickup Toolbox, Coleman Gas Lights.

Silo Distributor, 20' Hercules Unloader, 3 Section Peg Harrow, Rubber Tire Wheelbarrow, Litter Carrier, 12 Volt Gandy Box, Elect. Fencers, Chain Saw, Single & Double Trees, Sleigh, Pony Cart, Spring Wagon, Egg Baskets, Hog Feeders & Waterers, House Shutter & Windows, Lumber, many other items not mentioned.

Terms by
John D. Stoltzfus

Aucts.
Robert E. & Jeffrey R. Martin, 656-7770
AU000580L

Randall L. Ranck
Michael L. Martin, App.
Lunch Available — No Out of State Checks

Public Auction

MONDAY
OCTOBER 3, 1994
1:00 P.M.

152 ACRE FARM

LOCATION: RD 2 Annville, E. Hanover Twp., Leb. Co. Pa. From Rt. 422 in Annville at traffic light - N. 3.7 mile on Rt. 934 to Y in Bellegrove - left 4.1 miles on Blacks Bridge Rd. to Y at Lindley Murray Rd. - bear right .5 mile to farm on left. From I81 Exit 29 F. Indiantown Gap - S. on Rt. 934 under Rt. 22 - turn right on Jonestown Rd./old Rt. 22 at Harpers Tavern - 1.4 miles to Shirks Church Rd. - turn left and proceed 1.3 miles to Lindley Murray Rd. - left .3 mile to farm on right.

152 Acre farm real estate w/over 100 acres tillable - balance in woodland and pasture. Spring fed stream through farm. Level to gently rolling terrain w/frontage on both sides of Lindley Murray Rd.

Improvements include brick ranch style house built in 1975. Main floor has extra large kitchen w/custom built cabinets, large living room w/picture window, 2 bedrooms & full bath. 2nd floor has 2 bedrooms & sewing room. Full basement w/outside entrance. Home heated by oil hot water baseboard - drilled well and on lot septic.

2 story bank barn w/46 stanchions, attached milkhouse & calf barn, gutter cleaner & boxstalls. Frame & metal machinery storage sheds.

Inspection by calling 865-4050 or auctioneer. 10% down payment auction day w/balance due at settlement within 60 days. Financing available to qualified buyers by calling Rick Boudier at LVNB 1-800-251-8403. A tremendous investment opportunity. Call today for inspection appt.

Legal information by Attorney LOREN SCHRUM - 273-3733



138 College Avenue, Annville, Pa 17003
(717) 867-1809

Auction for
DOROTHY HOUSER
(717) 865-4050