

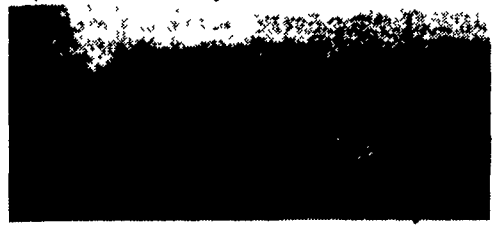
## PUBLIC AUCTION

### VALUABLE REAL ESTATE

### SAT., OCTOBER 22, 1994

Auction Time 2 P.M.

Location: From Intersections of Rt. 23 & 322 in Blue Ball take Rt. 322 East to Beartown turn right onto Narvon Rd. to Red Hill Rd. Turn left to Mast Rd. Turn left to property on left. 5855 Mast Rd., Salisbury Township, Lancaster County.



Real Estate consists of 1st floor eat-in kitchen, living room, 2 bedrms. & full bath. 2nd floor 2 bedrms. & 1/2 bath. Lower level has finished family room w/brick hearth & wood stove. Additional basement storage & 1-car attached garage. 12'x18' storage building w/ electric. On lot well & septic on 1.08 acre. Plenty of lawn & garden area. Ideal farm land, country view. For land plotting details call auctioneers at 717-445-4309 or 717-733-1006. Inspection by appointment or open house on Sats., Oct. 8 & 15 from 1-4 PM.

Terms by

**N. Lavern & Sharon Long**  
717-445-8524

Auction conducted by  
Randal Kline, Lloyd Kreider,  
Roy Good, Jr., Auctioneers, AU2116L  
717-445-4309



KLINE, KREIDER & GOOD

AUCTIONEERS

## REAL ESTATE FARM AUCTION

### Saturday, October 8, 1994

12 Noon

**203 Acre Pennsylvania Dairy Farm**  
**22 Acre Prime Building Site**  
Location Northumberland Co., Pa.  
Upper Augusta Township, 2 miles  
South of Sunbury off Rt. 147 next to  
Schwalm's Greenhouse.

### Tract #1 - Working Dairy Farm

203 acres more or less with 160 acres nice tillable high producing hvy. loam soil, 25 acre pasture with spring fed stream, 10 acre woodland. Buildings include modern 1982 110 stanchion dairy barn with maternity pens, ventilation system, Jamesway stable cleaner, milkhouse with DeLaval 2000 gallon bulk tank, DeLaval 8 unit DV300 pipeline milking system, office, lavatory. Other outbuildings include: 50'x110' loafing shed, pole structure implement sheds, feed and storage equipment as follows: 20'x70' Madison stave silo, 16'x50' Fickes stave silo, Patz unloaders, 20'x40' high moisture Harvestore silo, 32'x160' concrete trench, 10,000 bu. grain storage bin, 80' taperboard bunk feeder, concrete runways & more.

Dwelling as follows: 2 story brick home with plantation type main entrance, lg. open stairway, 6 bedroom, 3 full baths, modern knotty pine kitchen/dining room comb. with breakfast bar, spacious living room, study and laundry room. Dwelling also has screened in back porch, oil heat, dbl. car garage, never ending water supply and standard sewage. Property also offers 1/2 mi. hard top road frontage and mobile home for farm hand.

### Tract #2 - 22 Acres Prime Building Sites

Adjoining Tract #1 consisting of 22 acres prime tillable farmland with absolute best of development potential bordering Rt. 147 and having 1/2 mile hard top road frontage.

Real Estate Terms: 10% down payment.  
Other terms day of sale.

Showing Dates: September 10th, 11th, 17th, 18th from 1:00-4:00 p.m. or by appointment phone (717) 527-2449.

**Bruce & Sandy Shoch,**  
owners

Real Estate Auctioneer  
Bryan D. Imes  
Port Royal, Pa.  
Phone (717) 527-2449  
AU-001656-L

A Must See! Two very desirable properties for either dairymen or developer with over 200 acres more tillable farmland nearby!

## CONSIGNMENT AUCTION

### OF FARM EQUIPMENT

### SATURDAY, SEPTEMBER 24, 1994

### 9:00 A.M.

Located 12 miles north of Lewistown, PA (Mifflin Co) along Rt. 522 at village of Wagner

A few early consignments include:  
MF510D combine, MF44 cornhead; Uni-system 3-row w/737 bed; Int 510 16x7, DD drill; Int 710 4x16 plow; Int 560D, WF; Int 856D; Int 560; MF 1144 cornhead; MF 65D w/loader; MF85; Oliver 770D; Farmall Cub; Ford 8N; JD 730D, wf, 3-pt; Farmall MTA w/ picker; MF 1143 cornhead; Gleaner F & 2-row cornhead; NH855 round baler, JD PTO cornsheller; Int 510 drill; N10A manure spreader (nice); new 3-pt equipment

More equipment being consigned daily  
Machinery and tractors will sell early  
Loader tractor will be available Food Stand  
CASH OR GOOD CHECK

Auctioneer:  
Blaine N. Rentzel & Assoc.  
Pa License 761

**FOR CONSIGNMENT CONTACT:**  
**IVAN MACKNAIR, Manager**  
R.D. #5, Box 298B  
Lewistown, PA 17044  
Phone 717-543-5192

## Public Auction Register

Closing Date Monday 5:00 P.M.  
of each week's publication

SAT. OCT. 8 - 9AM, Antiques, HHG, Shop Items, Coins, Guns. Located 641 White Oak Rd., Strasburg, Pa. Take Rt. 222 So. Of Lancaster Turn East At Prange's Gas Station Go 1 Mi. To Sale On Left. Owners, Frank & Susan Patterson. Kreider, Kline & Good Auctions.

SAT. OCT. 8 - 9AM 629 N. Holly St. E-town Mt. Calvary School, Cars, Baskets, Quilts, Winross, Keler & Shaffner auctions.

SAT. OCT. 8 - 9:30AM Real Estate, antiques, household items & car. Located along Rt. 35 in Mt. Pleasant Mills, Snyder Co. Pearl Brubaker, owner Long's Auction Service.

SAT. OCT. 8 - 9 30AM Tools & HH Goods, 4437 Ashville Rd., Quarryville, Pa. Rt. 222 S. from Quarryville, left on Little Britain Rd., left on Ashville Rd. For Earl M Hess Whyte's Auction Service.

SAT. OCT. 8 - 10AM, Tractors, Machinery. Located On Premises Weaver Farm, 100 Mt. Olivet Road, Nottingham, Pa. From Calvert, Md., Take Rt. 272N. 2 Miles To Jim's Market, Turn Right On Greenhouse Rd., Follow 1 Mile To Sale. From Nottingham Take Rt. 272S, 2 Miles. By Order, Estate Of Harmon J. Weaver. Jeffrey E. Whiteside, Auct.

SAT. OCT. 8 - 10AM Calves. Shenandoah Valley of Va. & Potomac Highlands of W. Va.

SAT. OCT. 8 - 10AM, Estate Auction Of Mary Selcher, 498 Stoner Dr, Middletown, Pa. Antiques, Tractors, Household, Etc. Kerry Pae Auctions, Harrisburg, Pa. 717-236-3752.

SAT. OCT. 8 - 11AM, Real Estate, Household Goods, Lawn & Garden, Etc. Located In Penn Township, Snyder County, Pa. Go 2 Miles West Of Selinsgrove,

Pa., Or 4 Miles East Of Kremer, Pa. On Route 522. Then Turn North Off Route 522 Onto Salem Road At First Intersection West Of The Selinsgrove Center (At The Gemberling Farm). Then Travel 1 Mile On Salem Road To State School Road And Make Right. Travel 1/2 Mile To Auction Site. Watch For Auction Signs Day Of Auction. Owner, Mrs. Charles D. (Justine I.) Ewig, Jr. Roger A. Lauver & Dean E. Longacre, Aucts.

SAT. OCT. 8 - 12Noon Real estate, 3 homes, Pennsylvania German bank barn and outbuildings on 9 acres, 410 Schaeffer Rd., Lebanon, Pa. Go 4 miles S. of Lebanon on State Drive to Rt. 419 (The property is 1/2 block east of the intersection of Rt. 419 and State Drive). By Kenneth & Sheila Fair. Nelson L. Ebersole, auct.

SAT. OCT. 8 - 12Noon, 203 Acre Pennsylvania Dairy Farm, 22 Acre Prime Building Site. Located Northumberland Co., Pa. Upper Augusta Township, 2 Miles South Of Sunbury, Off Rt 147 Next To Schwalm's Greenhouse. Owners, Bruce & Sandy Shoch Bryan D. Imes, Auct

## PUBLIC SALE

HOUSEHOLD GOODS, ANTIQUES,  
TOOLS, AND  
WOODWORKING MACHINERY  
SAT., SEPT. 24, 1994  
At 9:00

Located along Martindale Road, at Martindale. Rt. 322 at Hinkletown light, turn East 2 miles to sale. Lancaster County, Pa.

### Household Goods

7 New Dovetail Chests, Cedar, Pine, and Others, Jewel Boxes, and Others, 3 Futon Sofa Beds - New, Sewing Desks, Cherry and Walnut, 3 New Cherry Hutches, Mini Hutch, Pine Corner Cupboard, Cherry Cabinets, Stands with Drawer, Tilt Top Table, and lots of various sizes of Cabinets, Quilt Rack, 18 in. Stools, Bar Room Chairs, Hoovers Washing Machine, Ice Cream Freezer, Milk Bottles, Portable Typewriter, Railroad Books, Plates and Cups, Quilts, Dress Material, Yarn, Lots of Other Material, Dishes, Cups, Saucers, Glasses, Jars, Plastic Pitchers, Plastic Freezer Boxes, Teddy Bears, 2 Bookcases, Green Canning Jars, Dated Jars, and Others, Sprinkling Cans, Sadiron, Old Calendars, Picture Frames, Crocks and Pans, Martindale Schoolhouse Plates, and lots of Others, Lots of Flower Planters, New Hand Crafted Checker Boards, Wall Hangings, Old Smoke Pipe, Some Toys, John Deere Tractor.

### Woodworking Machinery

Rockwell 13 in. Planer, with 2 Horse Power Motor, Delta 24 in. Jigsaw, Rockwell 6x21 in. Belt Sander, Rockwell Floor Model Drill Press, with Mortise, Rockwell 10 in. Table Saw, 10 New Ryobi Detail Sanders, 2 New 10 in. Conestoga 3 H.P. Table Saw, 110 or 220 Air Power Feeder for Table Saw and Sander, 12 in. Black & Decker Model 790 Cross Cut Saw, 12 in. Jointer, Skil Router, Portable Sioux 8 in. Grinder or Sander, 20 in. Stihl Chain Saw, Aluminum, Galvanized, and Stainless Steel Pipes, Aluminum and Stainless Steel Sheets, 1x4 White Pine Roofing Lath, 8 Rolls Polyethylene Plastic - 10 mils 24x52 ft., New Wood Molding for Paneling, Lots of New Aluminum Caboose Windows, and Others.

### Restored 1929 Caterpillar 10 Narrow - Gauge

Cigar Blocks and Knife, 2-Man Saw, Wooden Planes, Barley No. 5, and Others, Wooden Rake, Egg Baskets, Nail Kegs, Milk Cans, Wooden Pulleys, Dehorner, Drawing Knives, Hay Knife, Bow Saws, Lanterns, Hay Hook, Single Trees, Digging Iron, Flat Iron, Grain Cradle, Scythe, Aero Master Fly Fogging Machine, 15 Ton Duff No. 2 Jack, Electric Stapler, Fairbanks Platform Scales, 6 in. x 6 ft. Stroke Sander with 1 1/2 H.P. Motor, Bobcat Lawn Mower, Hand Push Mower, Log Cabin Mailbox, 200 lb. Roll No. 10 Gauge Stainless Steel Wire, John Deere Pressure Washer, Wooden Cigar Boxes, and Others, Lots of Bolts and Washers.

Auctioneer's Note: Caterpillar will be sold at 2:00, Furniture at 1:00, Woodworking Machinery at 12:00, 2 wagon loads Farm Items selling at 9:00, many more furniture and small items not listed, will be selling with 2 auctioneers.

Terms By

**NOAH N. ZIMMERMAN**  
717-445-8061

Auctioneers  
Paul W. Horst, AU-001122-L  
LeRoy S. Horst

Refreshments will be served.  
Not responsible for accidents.

## Public Auction

**Anna M. Smith Estate**  
(8) Acre Farmette - Absolute Auction  
Tractors - Farm Equipmt. - Antique Household  
Saturday Sept. 24, 1994 at 9:00 A.M.

Located in Hamilton Township, Adams County, at 760 Berlin Road, New Oxford, PA. Directions: From Route 30 at Cross Keys, take Route 94 North 1 mile, turn left onto Berlin Road, go .2 mile to sale site.

Real Estate consists of (8) Acres M/L with Approx. 430 Ft. Frontage on Berlin Road, being Improved with a 6 Room & Bath 2 1/2 Story Brick Dwelling w/attached Summer House. There is a full cemented cellar and property has own Well & Septic System. There is a 26'x42' frame barn With a frame & cement block 18'x42' addition on the end with a cement stave silo. Property has a 22'x24' Wagon Shed - wood frame 34'x40' Machine shed w/2nd floor - 20'x70' wood frame chicken house - wood frame unattached 2-car garage and other out-buildings.

**NOTE: This Property has excellent location, being near school, shopping area and heavily traveled Route 30 & 94. Would be ideal for Horses, Cattle, Antique Shop or Home Repair Shop or other potentials. Call (717) 624-2313 for Appointment to inspect this fine piece of Real Estate.**

Real Estate to be offered at 1:00 P.M.

### FARM ITEMS

J.D. "B" Tractor & Cultivators; Fert. Attachment for Side Dress & Heat Houser for "B"; J.D. "M" Tractor with following Equipmt, J.D. No. 5 Mower, Brush Bar, Front End blade, J.D. 2 Btm. Mtd. Plow, Cultivators, Sprayer w/boom (To be sold as unit); J.D. 2-Btm 14" trail plow; J.D. 2-section harrow; J.D. 8' Tractor Harrow; J.D. 28 Disk; J.D. 290 Corn Planter; Oliver Superior Drill w/wooden wheels; Nice GI ground driven manure spreader; Nice Wood Bros. SR Corn Picker; 8' Cultipacker; 2 Alum. single chain elevators; flat bed wagon w/sides; 2 wheel flat bed trailer w/hand wench; J.D. Single hole corn sheller w/Elec. motor; Nice Troy- Bilt 7 HP tiller; J.D. S-92 Riding Mower; Like New 4 HP Snapper Rotary Mower w/Elec. start; Merry Tiller; Air compressor w/Elec. motor; 28 & 32' wooden shifting ladders; wooden & metal wheelbarrows; 2 - 4 - 8 hole hog feeders; Cart hog troughs; 2-12' metal gates; chicken nests, fountains & feeders. Wagon load small items.

### SHOP TOOLS

Belsaw Model 279 Grinder; Belsaw Model 10293 Circle & Chain Saw sharpener; Belsaw Model 1200 Handsaw Filer; Anvil-Vise combination; Grindstone; Workmate bench; 1/2 HP Elec. drill, drill stand; Elec. sander; Grinder Mandrel; Asst. power & Hand Tools; Misc. Hardware and items not listed.

### HOUSEHOLD

Hotpoint Refrigerator w/freezer; G.E. 30" Elec. Stove; Maytag Automatic Washer; Old White Porcelain wood burning cook stove w/water tank; Old White Porcelain oil stove w/oven; old oil fired oven; old Bedroom suites; matching single bed, chest of drawers & nite stand; old wooden platform rocker; old China Closet & Server; old Oak rocker; nice old dovetailed cradle; Empire chest of drawers; wood box; slant top desk; Cedar chest; Cedar wardrobe; old trunk w/tray; Lg. Walnut wardrobe; Domestic sewing machine in cabinet; Zenith color TV; Crosley portable TV (Like New); several old frame chairs (needs Uphols.) other old chairs; misc. Glassware w/some Depression & Carnival; misc. dishes; Jars; Kettles; Asst. side crocks; Gold frame pictures; floor & table lamps and old misc. Pcs.

**Terms: Real Estate: 10% Down Day of Sale. Balance 45 Days.**  
**Personal Property: Cash or Approved Check. Out-of State Checks will need Bank Letter with current date, assuring credit, unless known by Auct. or Executor NOTE: May be Selling w/2 Auctioneers part of time.**

**Anna M. Smith Estate**  
E. Elmer Smith, Executor.

Gary E. Hartman, Attorney  
Dennis J. Plunkert, Auct.  
Littlestown, Pa. Lic. No 1102L  
Sam Evans, Appr. Lic No. AA-2188L

*Lunch Wagon at Sale. Farm Equipment Inspection Week Of Sale.*