

**Models 510S, 515E, 520, 520H, 525 & 530T Bunk Feeders**



Here's a better way to feed your herd! With the Pequea portable bunk feeder, you'll save time — save money. Load it up with silage, haylage, round or square bales or any mixture of grain and forage. Tow it into the field, and feed up to 52 head of cattle at once.

With Pequea's efficient slant-bar system cows can't push each other away from feeding spaces, so you have less feed loss from spills. Convenient low tank height accomodates any size cow.

You can save wear and tear on your pasture and they eliminate heavily trampled spots. Just move it to a new location each day.

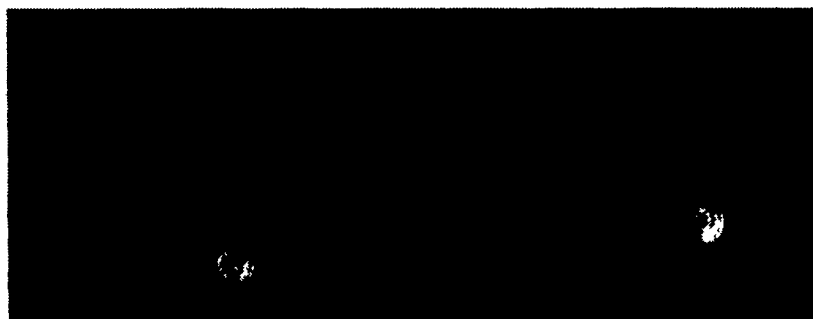
The New 520H cattle head gate bunk feeder (below) is the modern answer for holding cattle during breeding, veterinarian, or testing purposes.

**Model 520H Specifications**

- 25 Head Gates
- Self Locking
- 20 Feet Long, 7 Feet 3 Inches Wide
- Heavy Duty Welded Construction
- 15 x 8 x 6 Wheels
- 11 Ga. Bottom Sheet Steel
- Weight 2400 lb.

**Model 520 Specifications**

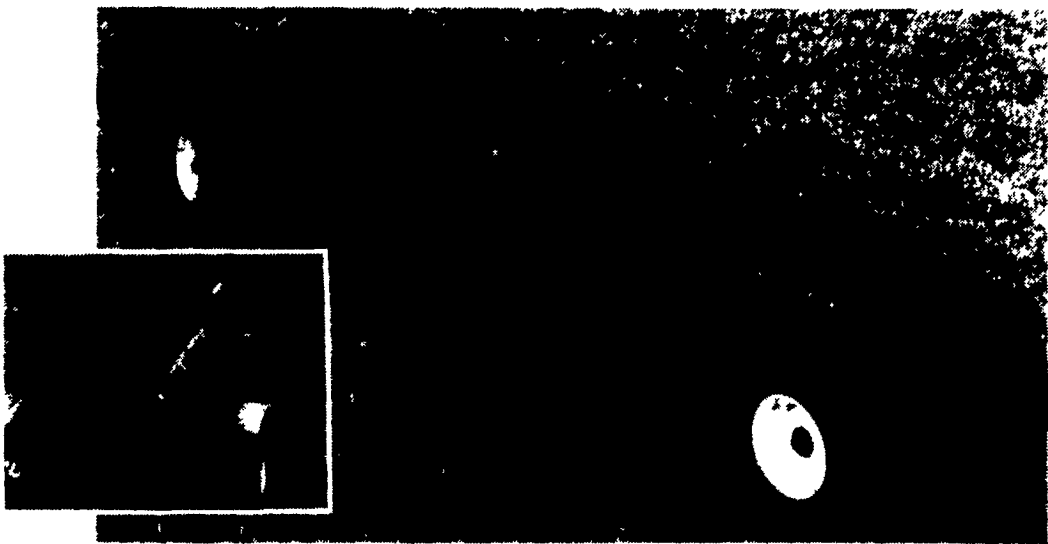
- 38 Feeding Openings
- 20 Feet Long, 7 Feet 3 Inches Wide
- Side De-Mountable for Large Round Bales
- Heavy Welded Rectangular Tube Construction
- 15 x 8 x 6 Wheels
- 11 Ga. Bottom Sheet Steel
- Weight with sides 2316 lb.



**SIZES AVAILABLE**

- 510S - 10 ft. long on skids
- 515E - 15 ft. long end gate
- 525 - 25 ft. long
- 530T - 30 ft. long, tandem axle

**Model 646 Round Bale Mover - Move a Mountain of Bales With This Heavy Duty Round Bale Mover**



- Low Profile for Easy Off-On Loading with 3 pt. Bale Spear or Front Loader
- Front Dolly Wheel Turning System lets you turn on a dime, giving you the ability to maneuver in tight spots all around your farm

- Center Marking Antennas help guide to the center for proper bale placement

OVERALL WIDTH . . . . .	9ft. 1in.
OVERALL LENGTH . . . . .	23 ft.
LOADING HEIGHT . . . . .	23 in.
CENTER FRAME . . . . .	4x10-1/4 in. Wall Tubing
BALE ARM . . . . .	4x4-3/16 in. Wall Tubing
BALE ARM LENGTH . . . . .	52-3/4 in.
TIRE TRACK . . . . .	7 ft. 4 in.
RECOMMENDED 12.5L 8PLY REAR TIRES MINIMUM	



• Rake Inverters • Tedders • PTO Woodsman Saws • Bale Racks • Wagon Gears • Portable Bunk Feeders • Combine Head Transport Gears • Rotary Cutters • Round Bale Movers • Box Blades • 2-4-6-8 Row Cultivators • Utility Trailers • Bale Spears

<b>Adamstown Equipment</b> Adamstown, Pa. 717-484-4391	<b>Dunkle &amp; Greib Equip.</b> Center Hall, PA 814-364-9109	<b>Hines Equipment</b> Cresson, PA 717-866-4183	<b>Ralph Kyle</b> RD #1 Mercer, PA 412-748-4300	<b>Kermit Kistler</b> Lynport, PA 610-298-2011	<b>Meyers Implement Inc.</b> Greencastle, PA 717-597-2178	<b>Stoltzfus Farm Service</b> Cochranville, PA 215-593-2407
<b>C.H. Rinheimer</b> Berwick, PA 717-752-7131	<b>Eckroth Bros. Farm Equip.</b> New Ringgold, PA 717-943-2131	<b>Hetricks Farm Equip.</b> New Bethlehem, PA 814-275-3507	<b>Ickes Farm Supply</b> Osterburg, PA 814-276-3422	<b>Knott &amp; Gelsbert Inc.</b> Frederick, MD 301-662-3800	<b>Morris International</b> Everett, PA 814-652-6101	<b>Triple H Equipment</b> Peach Bottom, Pa 717-548-3775
<b>Chambersburg Farm Service</b> Chambersburg, PA 717-264-3533	<b>Enfield Equipment</b> Whiteford, MD 410-452-5252	<b>Hutton Farm Equipment</b> Mahaffey, PA 814-277-6647	<b>Inch Equipment</b> McAllisterville, PA 717-463-2191	<b>Lake Ariel Hardware</b> Lake Ariel, PA 717-698-5601	<b>North East Distributors</b> West Clifford, PA 717-222-9090	<b>Umbergers of Fontana, Inc.</b> Lebanon, PA 717-867-5161
<b>Charles S. Snyder Inc.</b> Tamaqua, PA 717-386-5945	<b>Elder Sales &amp; Service</b> Stoneboro, PA 412-376-3390	<b>H &amp; E Farm Equipment</b> Dover, DE 302-674-1133	<b>Ivan J. Zook</b> Belleville, PA 717-935-2948	<b>Longeneckers Inc.</b> Williamsburg, PA 814-793-3731	<b>Pary's Farm Equipment</b> Laceyville, PA 717-869-1464	<b>Waltemyer's Sales &amp; Service Inc.</b> Red Lion, PA 717-244-4168
<b>Clugston Farm Equip.</b> Needmore, PA 717-573-2215	<b>Heflin Sales &amp; Service</b> Woodsboro, MD 301-898-3233	<b>Henry Horning</b> Lititz, Pa. 17543 717-626-5033	<b>J. David Mullinix</b> Dayton, MD 301-489-4363	<b>Marshall Machinery</b> Honesdale, PA 717-729-7117	<b>Pikeville Equipment</b> Oley, PA 215-987-6277	<b>Zimmerman Farm Service</b> Bethel, PA 717-933-4114
<b>Deerfield Ag &amp; Turf</b> Watsonstown, PA 717-538-3557	<b>PEQUEA MACHINE, INC.</b>		<b>J&amp;M Machinery Co. Inc.</b> Greensburg, Pa. 15601 412-668-7850	<b>Marlin's Farm Machinery</b> West Franklin, PA 717-364-5144	<b>R &amp; W Equipment</b> Carlisle, PA 717-243-2686	

3230 East Gordon Road  
Gordonville, PA 17529  
717-768-3197  
FAX: 717-768-8380