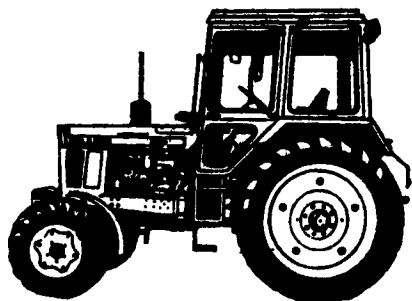


Belarus

Sensible, Down-to-Earth Tractors



World-Class Tractors for Today's American Farms

SPECIAL OF THE MONTH

Belarus Model 420 57 HP w/ROPS 4 Cyl. Air Cooled Diesel 4WD

CALL FOR PRICE

31 HP To 100 HP Available
1 Year Manufacturers Warranty
Financing Available

Call us for your **BIG** to small Tractor Needs

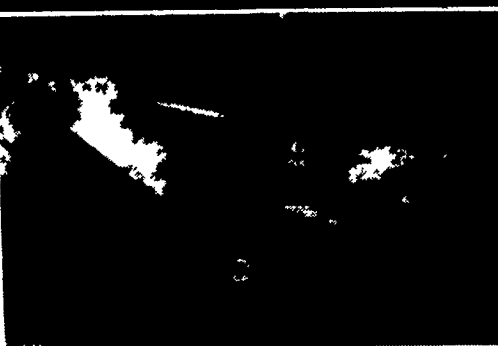
ROVENDALE AG & BARN EQUIP.

WATSON TOWN, PA 17777

717-538-9564 OR 717-742-4226



5440, 2 Heads, Immaculate
\$31,900
Call Stephen
717-249-2317



900-B Farmhand Tub Grinder
1,000 RPM, New Conveyor Belt,
New Hammers, Good Condition
\$7,500
Call (717) 866-2525

FARM EQUIPMENT

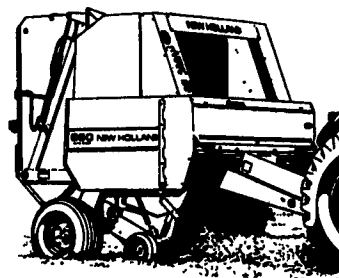
FULL LINE OF FORD NEW HOLLAND EQUIP.

FORD COMPACT DIESELS



All Models In Stock!

FORD NEW HOLLAND BALERS



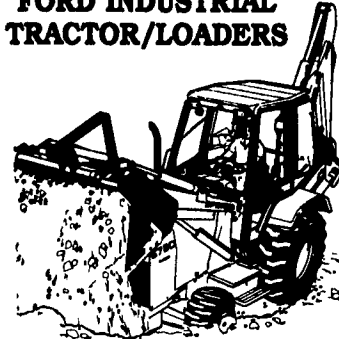
All Models In Stock!

Leasing and Financing Available
On All Models of Ford New Holland Equip.

NH BALERS AND HARVESTERS



FORD INDUSTRIAL TRACTOR/LOADERS



S.G. LEWIS & SONS, INC.

N. Jennersville Rd.,
West Grove, PA 19390
(610) 869-2214
(610) 869-9440



NEW HOLLAND



GOODYEAR RICE/CANE

28.6x26 12 ply	\$1,075
9.5x32	\$165
9.5x36	\$175
13.6x38 4 ply	\$199
13.6x38 6 ply	\$249
15.5x38 6 ply	\$259
14.9x38 8 ply	\$279
16.9x38 8 ply	\$366
18.4x38 6 ply	\$349
18.4x38 8 ply	\$399
20.8x38 8 ply	
23.1x26 12 ply	\$490
18.4x26 10 ply	\$350



FIRESTONE

20.8x34 8 ply	\$615
30.5Lx32 12 ply	\$1,175
18.4R34 8 ply	\$495
18.4R38 8 ply	\$525
20.8R38 8 ply	\$749
20.8R42 10 ply	\$825

GEN TIRES

24.5x32 10 ply	\$725
30.5Lx32 10 ply	\$990
28Lx26 10 ply	\$950
23.1x30	\$590

Armstrong R3 Tires

23.1x26 10 ply \$425



ARMSTRONG R1

14.9x24 4 ply	\$169
(B) 16.9x24 6 ply	\$239
(B) 18.4x24 12 ply	\$419
(B) 18.4x28 10 ply	\$375
20.8R42 10 ply	\$675

WE MOUNT TIRES

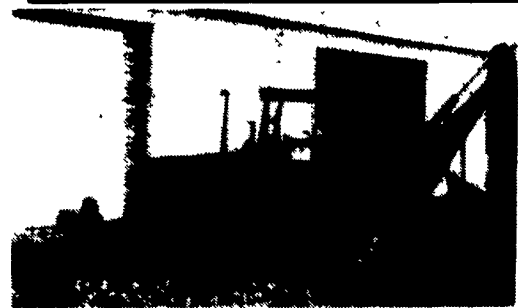
Call For Quotes.
Call For Tire Sizes
Not Listed

N.Y. 1-800-548-1884 or 315-539-2764
Mid State Tire

J & F EQUIPMENT

(717) 859-3283

No Reasonable Offer Refused
Custom Repairs On All Makes Industrial & Farm Equipment



JD 410, Rebuilt Motor \$12,000



JD 450B Rebuilt Motor New Pin Rods
Bushings, New Paint \$12,000

WE ARE BUYERS FOR CONSTRUCTION EQUIPMENT NEEDING REPAIRS

JD 350 or 450 ripper, good condition.....	\$1,000
JD 350 Crawler Loader.....	\$8,000
JD 350B Crawler Loader, good condition.....	\$9,500
JD 350C Crawler Loader, good condition.....	\$13,000
JD 450C Crawler Loader, w/good, UC, good condition.....	\$14,500
JD 9300 Backhoe Attachment.....	\$3,200



86 JD 310C A1 \$21,000



JD 350C \$12,500

TANEYTOWN FARM & HARDWARE

410-751-1500

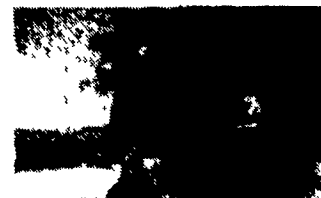
Bush Hog® King Cutter
Ingersoll Garden Tractors



Farmall 460G, New Rubber, Good TA,
Excellent Cond. \$2,995



Martin Spreader, Excellent Condition.
\$2,495



Ross Forklift, runs excellent \$2,900



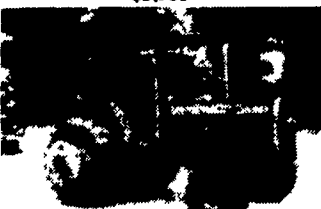
Case 585, New Rubber \$6,000



White 2-150
\$5,900



MF 265 2400 Hrs.
\$7,900



MF 2805 w/Cab
\$5,900



Ford 6710 4x4 w/cab & air
\$15,900

MF 1020 4x4.....	\$7,900	NH 519 Manure Spreader	\$1,250
MF 210 4x4.....	\$5,900	NH 513 Manure Spreader	\$1,995
MF 65 NE, Excellent.....	\$2,750	Cardinal Field Sprayer	\$2,495
Case SC/Cultivators, one owner.....	\$1,595	NI conditioner #270.....	\$795
9N Ford.....	\$1,350	Shaver drivers HD8, \$1,095 HD10	\$1,695
NH 450 mower.....	\$795	10' Bush Hog® mowers...	\$3,695
Woods C80 mower.....	\$495	20% off list on all Bush Hog®	
OMC 14 H.....	\$2,495	loaders	Call For Prices
Int. 3450 round baler.....	\$4,900		

Fall Consignment Sale Will Be Saturday, October 29