

1994 GMC 3500HD,
cab, chassis, 184" wheel
base, 6.5 turbo diesel, 5
speed, SLE, cassette, air,
6,500 miles, like new
MANHEIM C/P GMC
(717) 665-2473



**INTERNATIONAL 6x6 BRIDGE
TRANSPORTING STAKE BODY
TRUCKS**

Front Winch, PS, Air Brake, 1400/20 Tires, 21 ft. Bed with removable steel racks. Continental 6 cyl. engine. LIKE NEW 600-2,500 Miles. Excellent for off road heavy duty cargo transporting with their all wheel drive and ability to climb a maximum grade of 70 degrees. Double Frame. A must for every farmer.

\$2,500 to \$10,500
(814) 834-1018 St. Marys, Pa.

36 REAL ESTATE

100+ acre dairy farm. Joins 2 Amish farms, 75 tillable. Owner will finance. York Co Ask for Eunice Lehman. Home early to late. 717-284-2906 KINGSWAY 717-569-8701.

104 Acre Southern PA Dairy Farm, excellent soil, 51 comfort stalls, pipeline, tunnel ventilation, bunk feeder, 90x24 Morton & 42x100 Butler bldgs., 1000 ton silage storage. 2 brick houses. 717/359-4383.

10 acres, all woods. Off RT 93 Conyngham Sugarloaf area. Will hold mortgage. Hunting, snowmobiling, four wheeling. Call 610-489-0822, \$22,000.

11.59 Acre Farmette, 2 1/2 Story House, Bank Barn, 4-Car Garage, Excellent Condition. Northumberland County. (717)425-2318.

12A Farmette, Lancaster Co. 5BR remodeled farmhouse, 2 car garage, outbuildings, and spring fed pond. HOP USNER & ASSOCIATES. 717-733-3267.

165 acres, 125 tillable, natural line in the ground, well on property, lot of road frontage on Rt 310 in St. Lawrence County, NY, town of Norfolk. Large Amish community. Inquire POB 99, Raymondville, NY 13678. (315)384-4923. Brokers invited.

17A, Lancaster County, 15A tillable. HOP USNER & ASSOCIATES 717-733-3267.

20 acres of land. 40 acres of land w/stream. 24 acres of land w/rancher and outbuildings. (609)451-1919.

370 tillable acres dairy farm, nice house, double 4 milking parlor, 120 free stalls, 4 silos, heifer and dry cow barns, large equipment building w/concrete and grain liner. Facilities well maintained. (607)387-9575.

39 acre farm w/4 acres of woodland. 2 1/2 story, 8 room house w/oil heat, cellar cemented, house remodeled, wall-to-wall carpeting, except kitchen, bath & laundry room. (717)425-3711

3-Bedroom Ranch, 5 Years Old on 1.15A, Lg. Family Room, Lg. Deck. New Furn. \$98,500. Call (717)933-5045 3-Rooms Choice Color of Carpet. Frystown, PA Area.

Bradford County, PA- Modern Dairy Farm, 96 acres, 59 stall barn with 2 inch stainless steel pipeline. Attached 120x40 heifer barn accommodates 60 head. Alfalaval automatic feeder, 4 silos, liquid manure system (new 1993). 100x40 machine shed, outbuildings. Nice 4-bedroom house. For details call 717/297-2919.

Bradford County/300 acre operating dairy farm, 90-100 cows, 5 silos all w/unloaders, 1 sealed unit for shelled corn, 40x60 partitioned equipment shed, 40x160 heifer and machinery shed, 38x70 dry cow and heifer barn, 46 stall calf hutch complex, pipeline 1500 gallon bulk tank, TMR mixer, partially remodeled 3BR home. Some of the best of the soils. (717)297-2768.

Dairy Farm: 50 acres in operation now. Milking parlor, 4 individual units, 2 silos w/unloaders, (18x65, 14x40) 35 free stalls, shaker feeder, large shed, garage, good water supply, 3BR home. Owner retiring. Newark, NY. Possible Owner Financing (315)331-5628 after 7pm.

Dairy for RENT/LEASE/SALE 102 free stall, double 6, auto takeoff, 2000 gallon bulk tank, manure lagoon, silage in silos, corn in field. Monroe County. (215)681-4134.

Dairy/Poultry Farm, 116 acres m/l, 62A tillable, pasture w/creek. Juniata Co. 717/694-3275.

DUNDEE, NY dairy farm. 115A. A ready to go 44 tie stall barn w/pipeline milker, milk tank, 3 silos (2 w/unloaders), stable cleaner w/manure holding system, heifer and calf barns, garage and 10 room 2-story house, adjacent mobile home. Ideal for a one family operation. Located in beautiful Finger Lakes Region. (607)292-3890.

FARM. 81 Acres, Good Stone, Stuccoed Farmhouse. Barn Machinery Shed, Stream and Pond, Zoned Rural-Industrial, Bucks County. (215)598-7669

FARMHOUSE FOR RENT. Near Elizabethtown, PA. Lancaster County Area. (717)367-6506.

FARM LAND FOR RENT: 90+A, Approx. 75A tillable. York, PA. 215-722-0104.

FARMLAND LOCATED IN FINGER LAKES AREA, near Gorham, NY. 190A by owner, \$157,000. 607/522-4525 evenings.

Farmland Wanted To Rent: In Lancaster or York County. 717/872-9152, 717/872-4058.

FINGER LAKES DAIRY FARM: Just south of Pen Yan, NY, 80 stall free stall barns w/parlor, hay and heifer barn, 2 machine and storage sheds, large good farmhouse, 132A w/120 tillable nearly level land. 83A tillable land in one piece can be purchased w/farm or separate farm. Main farm \$250,000; 83A farm \$150,000. 607-243-8731.

FOR RENT: Apartment, fully equipped tie stall dairy barn. Forage on hand. Available immediately. Great start-up opportunity. Lancaster Co., PA. 717-626-9287.

FOR RENT: Modern fully equipped 42-stall dairy barn w/60 acres pasture and nice 7 room house. Tioga County. (814)628-2920.

FOR SALE: 144 acres, Steuben Co., NY, excellent deer and turkey hunting. Call 610-562-8505 or 717-769-6322.

FOR SALE: Approximately 108 acres, Heart of Amish Country, presently operating dairy and gift shop on premises. Lots of buildings, property suitable for horses or almost any purchase. Phone (412)286-3004.

For Sale by Owner: 86+ acre farm in Perry County. All plans now approved. Prime farmland, barn, 2 silos, outbuildings. Large stone and brick house, 5BR, large kitchen, dinin room and living room w/exposed beams and fireplace. Asking \$235,000. Elliptsburg, PA. For more info, (717)582-2391.

FRANKLIN CO., PA. 109A livestock farm, 65A tillable, 8 room house, barn fixed for livestock 717-532-7905.

Franklin County: 125 acre secluded farm. Four bedroom house. Many outbuildings. \$395,000. (717)597-5816.

FULTON CO., PA: 382+ Acre farm: 220A tillable, plus pasture and mountain ground. 3 homes and many outbuildings, all excellent condition. Ideal for dairy (Double 3 parlor), beef, swine operations. KELSEY REAL ESTATE/Dave M c L u c a s 717-328-9494/5629.

HOUSE TRAILER: 1977 New Yorker, 14x70, 2BR, 1BA, furnished, good condition. (610)488-7214.

HUNTINGDON CO. 54A, prime ridge land, 2A open, balance wooded. Easy access, perfect for hunting, recreation. 10 miles N.E. Huntingdon. Possible owner financing. 717-935-2722.

Hunters and Fishermen house for sale in the mountains of Clinton County. 717-725-3835.

Juniata County: 15.4 acres farmland and woods, perked, beautiful views, \$37,500. 717-653-1728.

KEEFER REAL ESTATE 717-349-2262. Franklin County, near exit 14 PA Turnpike. 90A+- open and wooded w/older 2 story home, vinyl siding, stone foundation, 3BR's, 1 bath, beautiful views... \$145,000.

Lewis County, NY: Exceptionally beautiful operating Dairy of Distinction, Super Milk farm, this 287acre dairy farm comes w/90 Holstein milkers producing 1,500,000Lbs./Year, full line of machinery, bountiful crops, 2 or 3 lovely homes, excellent productive soils, 2 abundant water supplies, Located in Mennonite Area w/Transportation to and from Mennonite Schools, Owner Selling due to poor health. Asking \$495,000. Call owner 315-688-4477.

Mifflin County Woodland, 5.4A w/stream \$15,900, 15A \$18,000, 24.6A \$28,900. Surveyed, perked, electric. 717/527-2402.

Prime farm land for sale by owner in upstate NY, Ontario County, between Geneva and Hall. 400A total, 320 work. Nice shop and 7000 sq ft. tool shed. (2) beautiful homes. Can be divided into 2 smaller farms if necessary. Information packets are available by calling 315-365-2816 (days); 315-789-9592 (evenings.)

Secluded wooded excellent camp and pond site, 30A prime hunting. Located north central Tioga County, near NY border. A must for the serious get-away from it all person. 717-835-5946.

Secluded Retreat, all the comforts of home on a wooded 10 acre parcel bordering State Game Land. 2 story structure has well, septic, electric, 3BR, 2BA, stone fireplace and much more for \$82,000. RE/MAX Axiom Realty, Call Vicki Trego, (717)248-4999.

SOMERSET PA: 250A working dairy farm, 80 tie stalls, 2 homes, 5 stall horse barn and tack room, riding ring, 40x20 run in shed, large machine and storage buildings, pond. 814-352-7297.

St.Lawrence County, NYS: 335A working dairy farm, 73 ties, pipeline milker, (2), 20x60 silos, 4BR, 2-bath restored home. Stocked, equipped... \$335,000. Bare farm... \$195,000. 315-769-5586.

TIOGA COUNTY, PA: #558... Fantastic views from this 1 1/2 year old home on 36+A. Private setting, full basement, 2 baths. #559... 30A w/ stream, utilities available, owner will have perc test done, Northern Tear Schools. #555... Operating dairy farm, home and 2 barns, outbuildings, (2) 14x70 silos w/unloaders, 154A, 110A tillable, fields in top condition, level to rolling. ENDLESS MOUNTAIN REAL ESTATE 717-659-5684.

TURBOTTVILLE, PA. 97A Farm, very nice well-kept house & barn, level prime ground w/stream running through, good pasture. 717/649-6451.

VIRGINIA: 140 acres, 90 opened, 1 1/2 A pond, fenced and crossed fenced, \$145,000 804-248-6645.

WANTED TO RENT. Mennonite family needs 4BR house w/shop or barn within Ephrata/Leola/New Holland, PA. 717-859-2706

Wellsville Area, York County, 45 acre farm 2-story home, barn, out buildings, pond. Bermudian Creek frontage, \$265,000 Call Fred Vlassek, RE/MAX Realty, 1(800)659-6301.

**FARMS FOR SALE
Columbia County, PA**

105 Acres in nice location on side road. 90 level tillable acres w/stream. Older 4 BR home in good condition, no other buildings. Would make nice Amish Farm. 20 Acres - For Commercial or Agriculture use, or home sites. Road frontage on main highway.

J. Paul Zeisloft
RD 3, Box 212, Danville, PA
Phone 717-437-2305 Evenings

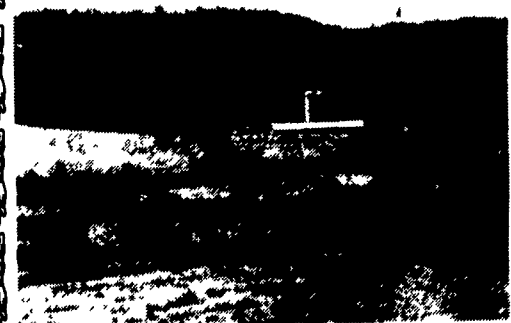
**SCHUYLKILL
COUNTY, PA**

**Approx. 170 Acre Nursery
and Christmas Tree Farm.**
Turn-Key Operation-
Complete. Since 1946.
Quality known nationwide
717/345-4952

COUNTY JUNCTION REAL ESTATE
107 W. VENANGO ST.
MERCER, PA. 16137
PHONE 1-800-266-2710

FARM FOR SALE—WESTERN PA.—
CRAWFORD COUNTY—127 acre dairy farm.
56 ties on pipeline. Bulk tank & milking machines included. 3 bedroom frame house. Silo with unloader. Misc. farm bldgs. 127 Acres. \$50,000 in tractors and farm equipment included. CALL FOR DETAILS

**Bradford County, PA
Columbia Cross Roads**



240 acre Farm, 2 houses, 2 barns (180'x85'), (40'x160'); 2 - 24'x90' concrete silos, complete manure facilities & storage buildings.

610-273-3761

GOD'S COUNTRY REAL ESTATE, INC.

116 NORTH MAIN ST.
COUDERSPORT, PA 16015
(814) 274-7640

Fax (814) 274-7642

Potter County, Pa

Let us show you one of these listings
#565 - Borders State Forest - 140 acres with in-ground septic system, driveway installed, prime recreational location in Sylvania Township.

#558 - Electric Available - 10 acres in Hebron with hard road frontage. \$9,900.00.

#493 - Very Remote - 26 acres in Roullette Township. \$10,000.00.

#563 - Borders State Forest - 2 bedroom home/lodge on 32 acres in Sylvania Township, own well & septic, gas heat, fireplace, detached garage, fruit trees. \$79,900.00.

#470 - Imagine living among nature - 3 bedroom home/lodge on 7 very private acres in Wharton Township, own well & septic system, oil heat, fireplace, lovely view, private entrance into property. \$79,900.00.

#463 - Sweden Township - 3 Bedroom home on 3+ acres, 1 1/2 baths, full basement, 2 car integral garage, gorgeous country location, property is in excellent condition.

#562 - Property in like new condition - chalet-and 2 lots in Lake Lloyd Subdivision in Bingham Township. Private privilege to Lake Lloyd. Gorgeous mountain setting. \$62,900.00

WE PAY CASH

For Owner Financed
Mortgages Trust
Deeds Business Notes
from all States
Cash today is worth
more than cash
tomorrow
Why Wait?
For a free quote
please call
GROFF FUNDING
717-664-5241



**Mt. Cabin
For Rent
McClure, Pa.**

Mifflin County On 315 Acres, Utilities.
One Hr. To Penn State. Hiking, Swimming,
Skiing, Hunting, Fishing, Skiing.
OPEN ALL YEAR-WEEKLY & WEEKEND RATES 717-659-9855

Tenant House For Rent on Small Estate in
Bucks County. 2 Bedrooms, 2 Baths, Den,
Living Room, Dining Room, Kitchen. Rent
Dependent Upon Ability to Provide Shared
Responsibility for Security of Property
Evenings and Weekends. Also Ability to
Assist Caretaker/Groundskeeper in Care of
Household Including Emergency Repairs,
Small Engines, Mowers, Tractor, Snow
Plowing, Other Lawn Equipment, Flower
Gardens, Shrubbery. Opportunity For
Retired or Semi-Retired Farmers.
Reply to:
P.O. Box 356, Pineville, PA 18946