

FARMER BOY AG INC.

Swine & Poultry & Equipment Center

FANS FANS FANS 36" to 48" Ventilate



With

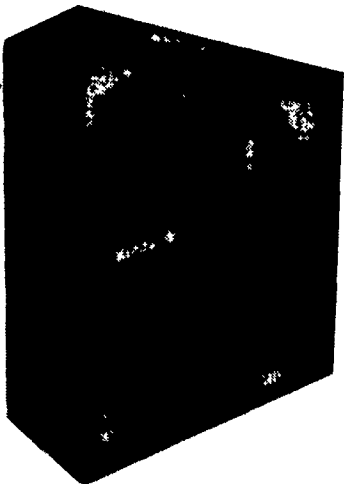
BELT DRIVE OR DIRECT DRIVE PANEL FANS FOR AGRICULTURE
Guaranteed Lowest Price

PROPELLER
All galvanized blades riveted to matching heavy gauge galvanized spider. High performance camber twist propeller, stabilizes air flow through lower speeds.

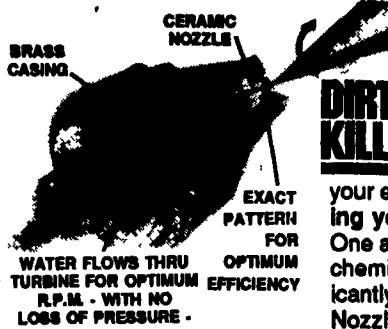
All wall housings are manufactured out of "Prime" G80 series galvanized steel for a long life and sturdy construction. All fans are equipped with a 10' cord. Guards are pre-cut and galvanized.

FAN STRUCTURE

- All galvanized frame and orifice - corrosion resistant, long lasting
- High Efficiency "PSC" motor.
- Upright motor mounts for unrestricted airflow.
- Full variable speed capabilities on Direct Drive.
- Stamped blades for consistent performance fan after fan.



• Twist link belt on belt drive for ease of adjustment to keep at top performance.



WATER FLOWS THRU TURBINE FOR OPTIMUM R.P.M. - WITH NO LOSS OF PRESSURE -

A Revolutionary Approach To Pressure Washing
Cut your cleaning time in half with the famous **Dirt Killer Nozzles**



DIRT KILLER NOZZLES It's World Patented Design, which features a rotating turbine, delivers the impact of a 0" nozzle with a 25" fan. This incredible performance will increase your efficiency while cutting your cleaning time in half - saving you money through reduced labor and material costs. One area where you will realize tremendous savings is with your chemicals. Not only will you use less chemical, but you will significantly reduce your disposal costs - proving that the Dirt Killer Nozzles are environmentally friendly, as well as powerful.

SCREW-DRIVE CURTAIN COMMANDER™

AIRSTREAM VENTILATION SYSTEMS Curtain Commander™ Screw Drive Automated Ventilation Curtain Controller by design is unsurpassed for durability and simplicity of operation. •Reversible brake drives available in 15 and 60 RPM models •3,000 lb. lift capacity (contact factory for restrictions). NV1 CONTROL Precisely adjustable in all ways. Lets you adjust both the run time and the pause time. It even lets you choose a different rate for opening and closing.



NV1 CONTROL

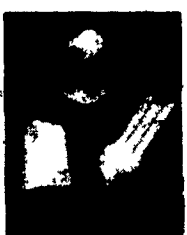
Use Fluorescent Lighting For Energy Savings

U-TUBE LAMP & SUPPLIES

"...the biggest advantage of these lamps is the economic savings over the life of the bulb. Once the initial investment is paid back, which will be done in less than six months, the increased electrical economy made such bulbs the most logical way to light..." MICHAEL J. Dore - PhD Animal Science University of Connecticut



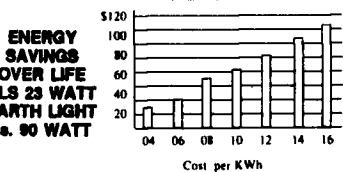
PHILIPS EARTH LIGHT ENERGY EFFICIENCY AND LONGER LIFE



Earth Light Collection lamps pay for themselves many times over by providing significant savings on energy, maintenance and replacement. Compared to ordinary incandescent lamps, Earth Light Collection lamps save up to 76 percent on energy. The SL523, for example, will save \$67* over the life of each lamp. What's more, these energy savers are accompanied by savings on maintenance and replacement. With an average life of 10,000 hours, Earth Light Collection lamps last up to 15 times longer than ordinary incandescent.

It's Time To Change Your Bulb® PAR HEAT LAMP

- Feature/Benefits
- 175 W
 - 30% Wattage Reduction. Savings Of Over \$37 Per Lamp Over The Life Of The Lamp = Energy Saving
 - Long Life



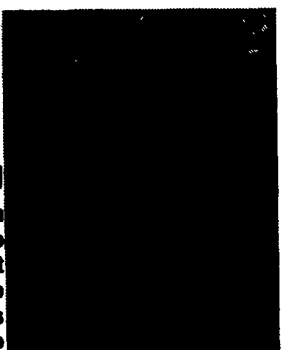
WayPig 500 ANIMAL SCALE

The bottom platform has non-skid surface with no gaps on the side through which feet can slip. The entire unit including sides and gates, serve as the weighing area. WayPig 500 & 505 scales can be ordered with wheels that can be quickly raised for level weighing.
WayPig 505 - 20"Wx60"Lx41-1/4" H



WayPig LITTER SCALE

All Four Wheels Swivel
An entire litter can be placed in the portable WayPig at one time, as the scale handles loads up to 200 lbs. The oversize scale quickly gives you clear, precise readout of the total litter weight in both pounds and kilograms. The compact design lets you easily glide through narrow aisles and around tight corners.



BEEF/DAIRY

CAPACITY	1000 lbs
LOADING	Easy
SPEED	Fast
DIMENSIONS	20" x 60" x 41 1/4"
WEIGHT	150 lbs

MODEL #3410

CAPACITY	1000 lbs
LOADING	Easy
SPEED	Fast
DIMENSIONS	20" x 60" x 41 1/4"
WEIGHT	150 lbs

NEW

MiraFont

THE PROVEN ENERGY FREE SYSTEM

MODEL #3360

CAPACITY	1000 lbs
LOADING	Easy
SPEED	Fast
DIMENSIONS	20" x 60" x 41 1/4"
WEIGHT	150 lbs

MODEL #3310-S Hogs

CAPACITY	1000 lbs
LOADING	Easy
SPEED	Fast
DIMENSIONS	20" x 60" x 41 1/4"
WEIGHT	150 lbs

NEW

WELDED FINISHING FEEDER

Single or Double Sided
A-P offers a quality line of economically priced, all welded, stainless steel hog feeders which are available in single-sided and double-sided (pictured above) styles. With feeding capabilities ranging from 4 holes up to 14 holes, you'll be sure to find a feeder just right for your installation.

4-Hole Double-Sided Finishing Feeder

POLYFENCE - LINE FEED BUNKS

5 YEAR WARRANTY

EASY INSTALLATION!

- Each bunk fits in 1/2" hole in wall with angle iron cables and end caps.
- Cattle like eating from a smooth bottom bunk.
- No back breaking work here.
- You'll like the way clean out all year long.
- No heavy duty tractor loader needed either.
- No clogs and tangles from other bunks and low in weight gain.
- Each bunk designed to be hung together with each other.

Material - polyethylene (Rockite) Size - 8' long 34" wide at the top 30" wide at the bottom 30" high on the high side (feeder wagon side) 22" high on the short side (cattle side)

Weight - 140#
Balls - stainless steel 7/8" x 27/32"
End Panels - polyethylene (Rockite)

PowerTwist

Unique Twistlock Design

Reduce Downtime
With PowerTwist, you will always have the right V-belt available. Just determine the length you need, then twist and interlock the end links by hand. No tools needed!

Fenner Manheim

SEE US FOR YOUR REMODELING NEEDS

Compare the difference!

SCHAFFER Barn Cooler

The only patented air circulation fan on the market!
Because of its design, it provides more air movement and therefore more cooling effect than any other circulation fan.

U.S. Pat #4,819,183

NORTHEAST POULTRY SHOW

Wednesday, September 28, 1994
Thursday, September 29, 1994
Lancaster Host Resort

SUNNE THERMOSTAT

Thermostat Has A Sealed Molded Plastic Case With All Exposed Metal Parts Of Stainless Steel, Intended For Applications That Need A Rugged Weatherproof Type Control Suitable For Either Heating Control Or Cooling Control.

QUALITY BROODER/ LAMPS

Complete With Guard And Hanger
Two Piece Porcelain Replacement Socket With Screw Terminals
BROODER WITH 6' CORD & WIRE GRILL

HEAT LAMPS- RED OR WHITE AVAILABLE

Full Line Of Parts In Stock For Your Poultry And Hog Needs

Hours: M-F 7:00-5:00; Sat. 7:30-11:30

Swine & Poultry Systems Specialists

FARMER BOY AG.

410 E LINCOLN AVE (RT 422) MYERSTOWN, PA 17067

PH. 717-866-7565

24 Hour Service

Check Our Warehouse Prices

WE SHIP UPS

SEE PAUL, JAY OR STEVE FOR YOUR PARTS AND EQUIPMENT NEEDS