

Hog Markets



State Graded Feeder Pig Sale

at Westminster
Livestock Auction

Report Supplied by Auction
September 2, 1994

565 PIGS; 2 WEEKS AGO 326.
PRICES 10.00-20.00 PER HUDNRED LOWER.

GRADES 1&2: 48 HEAD 32-39 LBS.
49.00-52.00; 218 HEAD 40-49 LBS.
50.00-57.00; 165 HEAD 50-57 LBS.
43.00-53.00; 59 HEAD 63 LBS.
42.00-48.00; 53 HEAD 74-81 LBS.
43.00-45.00.

NEXT STATE GRADED SALE FRI-
DAY, SEPT. 16, 11:30 A.M.

Lancaster Hogs

Lancaster Stockyards

Saturday, September 3, 1994

Report supplied by auction

There will no longer be a sale auction
on Saturday. Sales will be held Monday
and Wednesday.

New Holland Hogs

Monday, September 5, 1994

HOG RECEIPTS TODAY: 967 HEAD;
MARKET 3.00-4.00 LOWER.

US#1&2 220-260 LBS. 38.00-40.00;
FEW RETAIL 40.00-40.50.

US#2&3 220-260 LBS. 35.50-37.50.
US#1&3 180-220 LBS. 34.50-40.00;

270-300 LBS. 32.50-38.00.

SOWS: 300-500 LBS. 23.50-28.50;

OVER 500 LBS. 27.00-29.75.

BOARS: 23.00-25.50.

Indiana Livestock

Homer City, PA

Thursday, September 8, 1994

Report supplied by Auction

BEEF: HEIFERS GOOD 64.50,
MEDIUM 61.00-63.75, COMMON
58.00-61.00. STEERS: GOOD 68.00,
MEDIUM 64.00-66.50, COMMON
61.00-63.50. COWS: GOOD 48.00,
MEDIUM 40.00-44.50, COMMON
34.00-39.50.

BULLS: BUTCHER 51.75 BOLOGNA
50.00-52.00.

FEEDERS: GOOD LF 600-700 LB.
77.00, MEDIUM LF 600-700 LB.
67.00-71.00, COMMON 65.00-58.00.

CALVES: 85-115 LB. (BULLS)
90.00-128.00, 85-115 LBS. (HFRS)
130.00-160.00, 80 LB. UNDER 70.00

DOWN; 120 LBS. OVER VEAL 250-300
LB. 75.00-85.00.

LAMBS: GOOD 75 LB. 82.50;
MEDIUM 75-100 LBS. 75.00-80.00;

COMMON SHEEP 21.00-30.00.

HOGS: NO. 1 200-240 LBS. 36¢-40¢;
NO. 2 140-195 LBS. 32.00-34.00, 245
LBS. UP 36.00-37.50.

New Holland Feeder Pigs

New Holland, PA

Wed., September 7, 1994

Report Supplied by Auction

TODAY: 950 HEAD

LAST WEDNESDAY: 1383 HEAD
LAST YEAR: 837 HEAD

TREND: COMPARED TO LAST
WEDNESDAY, FEEDER PIGS
8.00-20.00 LOWER. ALL PIGS
WEIGHED ARRIVAL AND SOLD BY
THE HUNDRED WEIGHT.

GRADE 1-2: 45 HEAD 33-35 LBS.
60.00-64.00, WEIGHTED AVERAGE
33.58, WEIGHTED PRICE 62.80; 238
HEAD 41-49 LBS. 44.00-58.00,
WEIGHTED AVERAGE 44.42,
WEIGHTED PRICE 47.89; 174 HEAD
51-59 LBS. 44.00-52.00, WEIGHTED
AVERAGE 54.68, WEIGHTED PRICE
47.80; 28 HEAD 60-68 LBS. 49.00-52.00,
WEIGHTED AVERAGE 66.14,
WEIGHTED PRICE 51.78..

US#2: 122 HEAD 31-39 LBS.
44.00-56.00, WEIGHTED AVERAGE
36.25, WEIGHTED PRICE 48.64; 179
HEAD 42-49 LBS. 40.00-45.00,
WEIGHTED AVERAGE 47.26,
WEIGHTED PRICE 40.77; 28 HEAD 58
LBS. 40.00, WEIGHTED AVERAGE
58.00, WEIGHTED PRICE 40.00; 15
HEAD 76-86 LBS. 39.00-41.00,
WEIGHTED AVERAGE 82.8, WEIGHT-
ED PRICE 39.75.

US#2-3: 17 HEAD 33-37 LBS.
30.00-38.00, WEIGHTED AVERAGE
33.47, WEIGHTED PRICE 36.96; 13
HEAD 49 LBS. 38.00, WEIGHTED
AVERAGE 49, WEIGHTED PRICE
38.00; 10 HEAD 50-57 LBS. 35.00-40.00,
WEIGHTED AVERAGE 55.6, WEIGHT-
ED PRICE 35.90.

Indiana Hogs

Louisville, Kentucky

Thursday, September 8, 1994

BARROWS AND GILTS: UNEVEN-
LY STEADY. DEMAND LIGHT TO
VERY LIGHT. COUNTRY: PLANTS:
US 1-3 230-260 LBS. 34.00-35.50
34.50-36.00 & US 2-3 230-260 LBS.
32.00-34.00, 210-230 LBS. 30.50-32.50.
SOWS: STEADY.

US 1-3 300-500 LBS. 20.00-25.00,
500-650 LBS. 25.00-27.00, FEW 28.00.
PRELIMINARY ESTIMATE:
**34.000.

***RECEIPTS HAVE CHANGED
DUE TO CHANGE IN REPORTING
BASE.

THIS REPORT PREPARED BY THE
LOUISVILLE, KY. OFFICE OF THE
USDA LIVESTOCK AND GRAIN
MARKET NEWS
SERVICE--502-582-5287.

FEEDER CATTLE

Tues., Sept. 13 & 27
8:00 P.M.

Bring a Load - Buy a Load

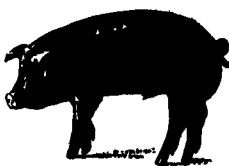
CARLISLE

Livestock Market, Inc.

Turn South of I-81 at Exit 12

(717) 249-4511 or

evenings, Jim 249-2359



KIRKWOOD HAY AUCTION

Hay, Straw and

Grain Auction

EVERY TUESDAY

11:00

Located Rt. 472 5 miles
south of Quarryville or 6 miles
north of Oxford corner of Rt.
472 and Noble Road.

Lloyd H. Kreider,

Auctioneer

AU-000513L

No out of state checks

PENNFIELD GRAIN BANK

Pennfield Offers A
Sound Program For
The Dairy Farmer To
Use His Grain
"Same As Cash" To
Reduce His Monthly
Feed Bill And To
Avoid Having To
Take "Harvest

Prices Week Of 9/12/94
Corn \$2.80 Bu.
Soybeans \$5.90 Bu.
Barley \$1.83 Bu.

- No Storage Charges
- Prices Updated Weekly
- Grain Bank Balance Shown On Each Invoice
- No Hidden Charges

For every ton of qualifying
dairy feed purchased you will
receive one ton of grain back
hauled at no charge

100% CASH
100% CASH

100% CASH
100% CASH

100% CASH
100% CASH

100% CASH
100% CASH

Hay & Grain Markets



Good's Hay

Leola, Pa.

Wed., September 7, 1994

Report Supplied by Auction

TOTAL LOADS: 56.
MIXED HAY: 62.00-150.00.
STRAW: 95.00-142.00.
TIMOTHY: 65.00-152.00.
CORN: 65.00-90.00.
ALFALFA: 65.00-130.00.
GRASS: 75.00-80.00.
OATS: 1.65-2.00 BU.
CLOVER: 100.00.

Kirkwood Hay Auction

Kirkwood, Pa.

Tuesday, September 6, 1994

Report Supplied by Auction

31 LOADS OF HAY.
MIXED HAY: 1ST CUTTING
67.00-98.00, 2ND 142.00.
TIMOTHY: 129.00-158.00.
ALFALFA: 1ST CUTTING
110.00-118.00, 2ND CUTTING 139.00,
3RD CUTTING 50.00-90.00.
CLOVER: 92.00.
STUBBLE: 46.00-59.00.
GRASS: 38.00-127.00.
WHEAT STRAW: 100.00-164.00.
BARLEY STRAW: 53.00.
OAT STRAW: 45.00.
OATS: 2.25 BU.
RYE: 4.00-4.10 BU.
SALE TIME 11 A.M.

Leinbach's Hay

Shippensburg, PA

September 3 and 6

Report Supplied by Auction

28 LOADS.
ALFALFA: FAIR 50.00-86.00.
MIXED HAY: 49.00-82.00.
BROME GRASS: 62.00-88.00.
ORCHARD GRASS: 52.00-94.00.
EAR CORN: 78.00-84.00.
MULCH: 35.00-40.00.

North Jersey Market

Hackettstown, N.J.

Report Supplied by Auction

Tuesday, September 6, 1994

Hay—Straw &

Grain Report

ALFALFA: 1 LOT AT 1.00 BALE.
MIXED HAY: 7 LOTS, 70-3.00 BALE.
CLOVER: 1 LOT AT 2.35 BALE.
GRASS: 13 LOTS .60-2.80 BALE.
STRAW: 1 LOT AT 2.60.
SHELLED CORN: 2 LOTS, 7.25 AND
8.00 BAG.
CORNMEAL: 1 BAG AT 8.00.
OATSD: 2 LOTS AT 6.50 AND 7.75
BAG.

Diffenbach Auction Center

New Holland, Pa.

Monday, September 5, 1994

Report Supplied by Auction

TOTAL LOADS: 92.
ALFALFA: 55.00-130.00.
MIXED HAY: 65.00-160.00.
TIMOTHY: 70.00-190.00.
ORCHARD GRASS: 70.00-120.00.
STRAW: 87.00-200.00.
EAR CORN: 45.00-87.00.
OATS: 2.35.
RYE: 4.25-4.75.
FIREWOOD: 72.00.

Green Dragon Hay

Ephrata, Pa.

Friday, Sept. 9, 1994

Report Supplied by Auction

75 TOTAL LOADS.
MIXED HAY: 60.00-150.00.
ALFALFA: 60.00-102.00.
TIMOTHY: 50.00-165.00.
ORCHARD GRASS: 67.00-115.00.
STRAW: 70.00-152.00.
EAR CORN: 78.00-96.00.
OATS: 2.10-2.45 BU.
RYE SEED: 3.85-4.25 BU.

Keister's Hay

Middleburg, PA

September 6, 1994

Report supplied by auction

54 LOADS, 23 LOADS OF HAY.
MIXED HAY 40.00-130.00.
TIMOTHY: 100.00.
STRAW: 2 LOADS, 50.00 AND 80.00.
EAR CORN: 19 LOADS, 70.00-90.00.
SHELLED CORN: 2.80 BU.
RYE: 4.15-4.50 BU.
OATS: 1.80-2.00 BU.

Kutztown Produce Auction

Report Supplied by Auction

Saturday, September 3, 1994

TOTAL LOADS: 12.
TIMOTHY HAY: 81.00, 1.50 BALE.
GRASS HAY: 72.00-120.00, 2.30
BALE.
MIXED HAY: 68.00-110.00.
EAR CORN: 78.00.
STUBBLE HAY: 82.50-92.00.

Dewart Hay

Dewart, Pa.

Monday, September 5, 1994

Report Supplied by Auction

8 LOADS OF HAY, 51.00-84.00.
STRAW: 1 LOAD AT 48.00.
WOOD: 3 LOADS, 20.00-36.00.
CORN: 3 LOADS, 58.00-80.00.
OATS: 1.95 BU.

Regional Hay

September 6, 1994

Eastern, Pa.

HAY & STRAW MARKET FOR
EASTERN PA. - (ALL HAY NO. 2 AND
BETTER. PRICES PAID BY DEALERS
AT THE FARM & PER TON). HAY AND
STRAW STEADY TO STRONG.
ALFALFA 70.00-100.00; MIXED HAY
70.00-100.00; TIMOTHY 65.00-105.00;
STRAW 60.00-100.00; MULCH
30.00-40.00.

SUMMARY OF LANCASTER CO.
HAY AUCTIONS FOR WEEK ENDING
9/2/94. PRICES PER TON: LOADS: 141
HAY, 48 STRAW & 46 EAR CORN.
ALFALFA 70.00-135.00; MIXED
HAY 70.00-140.00; TIMOTHY
75.00-150.00; STRAW 102.00-160.00;
EAR CORN 65.00-96.00.

SUMMARY OF CENTRAL PA.
HAY AUCTIONS FOR WEEK ENDING
9/2/94. PRICES PER TON: LOADS: 84
HAY, 8 STRAW & 27 EAR CORN.
ALFALFA 55.00-110.00; MIXED
HAY 50.00-102.50; STRAW 75.00-98.00;
EAR CORN 70.00-90.00.

Pennsylvania Livestock Auction

Waynesburg, Pa.

Thurs., September 8, 1994

Report Supplied by Auction

CATTLE: SL. COWS: UTILITY &
COMMERCIAL 43.00-50.50; CUTTER &
BONING UTILITY 40.00-47.00; CAN-
NER & LOW CUTTER 35.00-43.00;
SHELLS 35.00 & DOWN. BULLS:
YIELD GRADE 1 1500#-2000#
50.00-62.50; YIELD GRADE 2
1000#-1400# 50.00-58.00.
FEEDER STEERS: M&L-1 300-500#
70.00-90.00; 250-280# 75.00-98.00, M
600-900 55.00-75.00. HEIFERS M 1&L-1
300-500# 65.00-80.00; L-1 400-650#
60.00-75.00. BULLS M&L-1 300-620#
58.00-90.00.

CALVES: VEAL.. PRIME
90.00-100.00; CHOICE 80.00-88.00;
GOOD 60.00-77.00.

FARM CALVES: #1 HOLSTEIN
BULLS 90-120# FEW 85.00-125.00; #2
HOLSTEIN BULLS 80-100# FEW
75.00-100.00; BEEF X
BULL&HFRS./HD. 60.00-112.00.

HOGS: BARROWS & GILTS #1-2
210-255# 38.50-42.50; #2-3 255-280#
35.00-40.50; SOWS #1-3 300-500#
28.00-35.00.

FEEDER PIGS: 1-3 25-35#
15.00-35.00/HD.

LAMBS: HIGH CHOICE 55-75 LBS.
58.00-78.00; CHOICE 90-105#
60.00-72.50; FEEDER LAMBS GOOD
54.00-70.00; SHEEP 15.00-38.00.

GOATS: LARGE 40.00-88.00/HD.;
MEDIUM 30.00-44.00/HD.; SMALL
10.00-25.00/HD.

HORSES: 40.00-64.50, PONIES
20.00-45.00.

In This Issue

Five Sections

HOME AND YOUTH

Homestead Notes.....B 2
Home On The Range.....B 6
Cook's Question Corner.....B 8
Kid's Korner.....B10
Farm Women Societies.....B11
4-H Happenings.....B20, B23
FFA Happenings.....B22

COLUMNS

Now is the Time.....A10
On Being A Farm Wife.....B 4
Taking Time.....B 5
Consuming Thoughts.....B 7
Ida's Notebook.....B 9
You Ask.....B13

DEPARTMENTS

Editorial.....A10
Farm Calendar.....A10
Farm Forum.....A10
Futures.....A16
Business News.....C 4
Classified Ads.....C 6, D 5
Fair Happenings.....D 2
Mailbox Markets.....E 5
Sale Reports.....E 9
Public Auction Register.....E 9

DAIRY

DHIA Focus.....A40

FEATURES

Central District Dairy.....A21
Mindy Md. Supreme Again A22
Jersey Allentown Supreme A26
Md. Holds Fundraiser.....A28
Allentown Goat Show.....A30