

Public Auction Register

Closing Date Monday 5:00 P.M.
of each week's publication

SAT. OCT. 1 - 9AM, Tools, Farm Equip., Lawn & Garden, Bld. Supplies & Car Located Church St., Cross Roads, York Co., I-83 Exit 1, E Rt. 851 To Stewartstown, N Rt. 24 3/4 Mi. To Sammis Chevy Turn R, 2 Mi To Cross Roads, R On Church St., 1/2 Mi. To Sale On R. Owners, Phil Robinson & Others. Kenneth E. Keeney & Marlette Thomas, Aucts.

SAT. OCT 1 - 9AM, Real Estate, Antiques, Farm Equipment & Personal Property. Located From Harrisburg Travel West On Route 322, Take Millerstown Exit Turn Right On Route 17, Proceed 4 Miles

Toward Seven Stars, Take 3rd Hard Road On Right (Greenwood Rd.), Continue 2 Miles, Take Sharp Left, Then Go 1 1/2 Miles To Stop Sign, Continue Through Stop Sign, Take 1st Left Just Past Yellow House Onto Highland Road, Go 3 Miles To Lane On Left, Signs Posted. Owner, Lynn M. Zimmerman. Hassinger & Courtney, Aucts.

SAT. OCT. 1 - 9AM, Household Goods, Farm Equipment & Tools. Located Between New Holland & Leola, Turn Off Rt. 23 On North Groffdale Road To Brick Church Road Turn Left To Sale Lanc. Co., Pa. Terms By,

John D. Stoltzfus, Robert E. & Jeffrey R. Martin, Aucts.

SAT. OCT. 1 - 10AM Ylg. and Board Sale, Shenandoah Valley of Va. and Potomac Highlands of W. Va. South Branch Stockyards, Moorefield, WV.

SAT. OCT. 1 - 10AM, Real Estate, Antiques & Farm Equipment. Located From Pa. Rte. 895 Take Pa. Rte. 501 South 1/2 Mile To Auction On Left. Selling For, Mr. & Mrs. Albert C. Glore. Robert W. Derfler, Auct.

SAT. OCT. 1 - 10:30AM, Valuable Real Estate, Personal Property, Tools, Etc. Two Plus Acres, Mostly Wooded Level Land. Located On Northeimer Road In Salisbury Township, Pequea Valley School District. From Route 322 East Go South On Route 897 To Gault Road, East To Narvon Road, North To Northeimer Road. Owners, Paul & Mary Jane Glick. Steve & Steve Jr. Peterseim, Aucts.

Public Auction

**MONDAY
SEPT. 12, 1994
9 A.M.**

E-X-P-A-N-D-E-D L-I-S-T-I-N-G

LOCATION: Lebanon Area Fair Grounds, corner of Rocherty and Cornwall Roads, Lebanon, Lebanon County, Pa. from Rt. 72, South of Lebanon, turn left onto Rocherty Road or from Rt. 72 North of Quentin, turn right onto Rocherty Road to Fairgrounds on right.

TRACTORS & TRUCKS

International 284 28hp gas, wf, 3pt.; Case 630 gas wf (restored); Case 511 gas w/ps; John Deere 350 gas crawler/loader; 1967 Chev. dump trk.; 1973 Chev. Dump Truck, 24,000 GVW, V8, 5+2, ps, w/15' alum. grain body; Ford 6600, all purpose, w/turbo & dual power; (2) John Deere B's; Case 440 w/ sickle mo.; Toyota PU Truck; John Deere 120 riding mo.; Ford 12 H riding mo. w/tiller;

PLANTING & HARVESTING

IH 720 harv. w/2R crnhd.; JD 1380 12' mo/cond.; MF 12' grndrll.; NI 325 cornpckr. w/8 roll bed; (2) McCurdy grav. wagons; Gehl 600 harv. w/2 rn crnhd. & 6' hayhd.; Case PTO baler; IH 2PR cornpickr.; IH 445 baler/throwr.; IH 56 4R cornplantr; JD 894 hayrake; Gehl 2x30 snapper hd.; MF 43 grndrll; IH 51 chuck wagon; MC chopper/cond.; Hesston stack mvr.; JD IR cornhd.; JD 5' pu hd.; JD FBB grndrll; OMC 540 stacker; 01 8' grndrll w/fert; JD 35 harv w/5' PU; JD 13' quick-tatch grnhd; JD 3940 Harvester w/2RN cornhead; NH blower; IH 80 pull type combine.

TILLAGE

IH 20' folding fld. cult.; Noble 12' soil finisher; Miller 11' 3 bar offset disc; IH 710 5x16" on land plow; 01 252 11' transport disc; 01 3x16" semi-mt. plow; IH 14' fld. cul. w/ buster bar; Kasco 11' 3pt hi-clear chsl. plow; Kewanee 13' disc ; IH 18' fld. cult; MF 2x 3pt plow; Dunham 12' cultimulchr; 3 sec. harrow; OL 3x 3pt. trip plow;

OTHER EQUIPMENT

NH 354 grind/mixer; Agway cow breeding whl.; IT Gantrey crane; steel eye beams; alum. diamond plate; drill press; 42" cub mower deck; IH rollbar off 856; JD 4 post canopy for 4230; Bush Hog 5' 3pt fl. mo; loader off MF 175; 18.4x30 clamp on duals; 16.9x34 clamp on duals; IR 3pt. cult.; (6) JD spring plow coulters; (2) feed bag scales; 5' 3pt. R Mo.; 6 1/2'x12' 2whl. trailer; chicken crates; Souder ldr. brackets; torch kit; 300 gal. fuel tank on skids; wagon lot of farm and garden tools JD rear-mtd. L & G tiller; (2) JD riding mo cabs; LawnBoy rear tine tiller; (2) L & G snow plows; Wic beddg. chopper (no eng); 16.9x28 duals; PTO corn shellr; portable cattle chute; wooden wagon gear w/wooden wheels; (24) split rails; 23' Ressler feed convyr. (only 6mo. old); 6'x10' tandem axle utility trlr.; Gehl 95 grindr/mixr; school bus converted to truck; (20);

CONSIGNMENTS WELCOME !

NOTE: Tractors and machinery are mixed in the field. We are accepting consignments on location September 8, 9 & 10th 9AM til 4PM.. We will be loading equipment September 12, 13 & 14th. All items must be removed by September 14, 1994. Some items subject to prior sale. All items are sold "AS IS" and "WHERE IS" without any guarantees expressed or implied.

TERMS: CASH, complete payment auction day. Checks accepted with bank letter of credit.

AUCTIONEERS

**HARRY H. BACHMAN
GLENN T. WENGER**

**AU-000033L
AU-002510L**

**LEBANON VALLEY AUCTION
COMPANY, INC.**

RY-000014L

DAVID WENGER
717-866-2135
GLENN WENGER
717-866-2130

HARRY BACHMAN
717-867-1809
DENNIS GRUMBINE
717-272-4641

**PUBLIC SALE
OF ANTIQUES, FINE CHINA,
GLASSWARE & FURNITURE
SAT., SEPTEMBER 17, 1994**

8:30 A.M.

Located at RD#1 Bainbridge, PA. From Elizabethtown take Turnpike Road (W. High St.) 4 miles West to Black Swamp Road. Left on Black Swamp. From Route 441 at Falmouth go East on Turnpike Road 2 Miles to Black Swamp Road. Right on Black Swamp.

Walnut Farm Table, High Dry Sink, Jelly Cupboards, Pine Wardrobe, Wash Stands, Schoolmaster's Desk, Marble Table, Half Moon Table, Pie Crust Tilt Top Table, Cherry Slant Top Desk, Cherry Dropleaf Table, Mortise Bench, Afro-American Figurine - 3 Ft. Iron & Tin Table, Fainting Couch, Oak Table, Blanket Chest, Dough Tray, Oak High Chair & Others, Hanging Corner Cupboard, Wagon Seat, Single Bed, Cane Rocker, Oyster Shell Crusher, Oak Potty, Wood Bag Wagon, Child's Furniture, Kitchen Cook Stove, Captain's Chair, School Desks, Wood Box, Piano Stool, "Horner Piano" (Accordian), Clothes Tree, Brass Cash Register, Red RS Prussia & Other Fine China, Large Selection Of Cut & Pressed Glass Pitchers, Bowls & Dishes, Compotes, Mary Gregory Vases, Sutz Cup & Saucer, Copper & Iron Kettles, 15 Roseville Pottery Pieces, Oak Wall Telephone, Shelf & Mantle Clocks, Majolica, Coal Oil Lamps, Skaters Lantern, Betty Lamp, Buggy Lanterns & Others, Wall & Regular Coffee Grinders, 7 Pc. Wash Bowl Set, Glass Sheep Marble, Bainbridge Bottles & Others, Stereoscope, Iron & Tinware, Sm. Ge Radios, Baskets, Grain Cradle, Crocks, Jugs, Butter Churn, Lard Press, Wooden Buckets, Wooden Rake & Shaking Fork, Tin Coffee Pot, Brass Ladles, Cookie Cutters, Ice Scraper, Swan Butter Print, Sad Irons, 8 Hole Candle Mold, Boot Jacks, Iron Banks, Bust Figurine, Tin Lunch Box, Milk Cans, Coke Cola Clock, Old Sled, Iron Spittoon, Cherry Seeder, Apple Peeler And Many Other Items To Numerous To Mention.

Sale By
WALTER HESS

Auctioneers:
Harold (Abe) Shaffner
829-L 653-5689
Mark Diffenderfer
367-1880

FOOD STAND

REAL ESTATE FARM AUCTION

Saturday, October 8, 1994

12 Noon

**203 Acre Pennsylvania Dairy Farm
22 Acre Prime Building Site
Location Northumberland Co., Pa.
Upper Augusta Township, 2 miles
South of Sunbury off Rt. 147 next to
Schwalm's Greenhouse.**

Tract #1 - Working Dairy Farm

203 acres more or less with 160 acres nice tillable high producing hvy. loam soil, 25 acre pasture with spring fed stream, 10 acre woodland. Buildings include modern 1982 110 stanchion dairy barn with maternity pens, ventilation system, Jamesway stable cleaner, milkhouse with DeLaval 2000 gallon bulk tank, DeLaval 8 unit DV300 pipeline milking system, office, lavatory. Other outbuildings include: 50'x110' loafing shed, pole structure implement sheds, feed and storage equipment as follows: 20'x70' Madison stave silo, 16'x50' Fickes stave silo, Patz unloaders, 20'x40' high moisture Harvestore silo, 32'x160' concrete trench, 10,000 bu. grain storage bin, 80' taperboard bunk feeder, concrete runways & more.

Dwelling as follows: 2 story brick home with plantation type main entrance, lg. open stairway, 6 bedroom, 3 full baths, modern knotty pine kitchen/dining room comb. with breakfast bar, spacious living room, study and laundry room. Dwelling also has screened in back porch, oil heat, dbl. car garage, never ending water supply and standard sewage. Property also offers 1/2 mi. hard top road frontage and mobile home for farm hand.

Tract #2 - 22 Acres Prime Building Sites

Adjoining Tract #1 consisting of 22 acres prime tillable farmland with absolute best of development potential bordering Rt. 147 and having 1/2 mile hard top road frontage.

Real Estate Terms: 10% down payment. Other terms day of sale.

Showing Dates: September 10th, 11th, 17th, 18th from 1:00-4:00 p.m. or by appointment phone (717) 527-2449.

Bruce & Sandy Shoch, owners

**Real Estate Auctioneer
Bryan D. Imes
Port Royal, Pa.
Phone (717) 527-2449
AU-001656-L**

A Must See! Two very desirable properties for either dairymen or developer with over 200 acres more tillable farmland nearby!



PUBLIC AUCTION

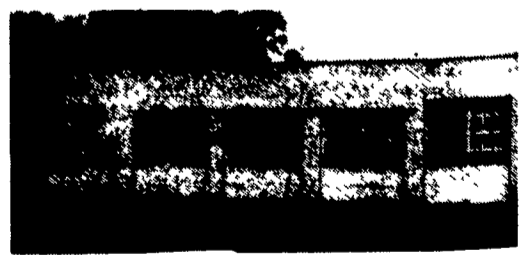
Of Valuable Real Estate, Household Goods & Miscellaneous Items

Thurs., October 6, 1994

Sale At 6:30 P.M.

Real Estate At 7:00 P.M.

Located 4 Miles Northeast Of Blue Ball Turn Off Rt. 625 At Bethany Mennonite Church East On Union Grove Rd., To Sale At 1447 East Earl Twp., Lanc. Co., Pa.



Lot .85 Acre M/L

Zone Residential medium 2 1/2 story frame dwelling w/aluminum siding & soffit, storm windows & doors, L porch w/PVC vinyl banister, kitchen w/raised panel oak cabinets, electric stove, vanity, laundry w/washer, dryer hook-up, commode.

Family room w/built-in bookcase, foyer, living room w/wall to wall carpet, hallway w/walk-in closet. 2nd floor w/5 bedrooms w/closets, wall to wall carpet, full bath, linen closet in hallway.

Basement under 1/4 of house, outside entrance, oil fired hot water baseboard heat, furnace 1 yr. old, 2 zone heat

Well & cistern both w/pressure system. 100 amp service, hook-up for generator, on site sewer.

Aucts.

**Robert E. & Jeffrey R. Martin
656-7770**

**Randall L. Ranck
Robert Weaver, Atty. For
Wentz, Weaver & Kling**

30'x60' Concrete Block

5 bay garage w/12'x10', three 11'x10' & one 7'x8' overhead doors, wood burning stove, running water & 220 amp service, black top drive, fruit & nut trees.

Open for inspection, Sat., Sept. 17 & 24 from 2:00 to till 4:00 p.m. or for appointment call 445-6600.

10% down day of sale balance on or before Dec. 6, 1994.

Household Goods- 58" modern cherry dutch hutch, 5 pc. wood kitchen set, 3 pc. lime oak bedroom suite bookcase bed, single bed w/box spring & mattress, 4 oak chairs, bassinet crib, clothe tree, 17' cu. ft. Whirlpool refrigerator w/freezer top, Royal vacuum cleaner, floor & table lamps, some dishes, books & games, 3 bicycles, 3- 5 & 10 speed, Hahn eclipse reel mower, push mower & other items not mentioned.

**Terms By
Jay L. & Florence S. Martin**