

## Public Auction Register

Closing Date Monday 5:00 P.M.  
of each week's publication

## PUBLIC AUCTION SAT., SEPT. 17, 1994

Time: 9:00 A.M.  
7341 Chambers Hill Rd.  
Harrisburg, PA

From Route 322 turn South on Mushroom Hill Road (up the hill) to Chambers Hill Road, turn left to sale on right, signs will be posted.

### ANTIQUES - COLLECTIBLES - TOYS - HOUSEHOLD

1940's Living Rm Set, BR furniture, Hoosier style cabinet, 1940's kitchen set, Star barn picture, Smith-Corona Elec. Typewriter NIB, telephone chair, Brass candlestick telephone, Stein collection, Pipe collection, RR collectables and lanterns, old tube radios & tubes, old toys from the 1940's to 1960's to include old models, Flash Gordon Pencil Kit, Hopalong Cassidy Puzzle, Hess, Ertl & Winross trucks, Roadmaster Flying Falcon Bike (nice), plus other military, cowboy, auto, etc. Comic Book collection (many 10¢), Baseball & Sport collectables, gloves, autographed balls, HBG. Senators collectables, fishing equip. to include rods, reels, lures, etc. Knife collection of pocket, hunting, military bayonets, etc. CIVIL WAR Discharge, CW coffee pot, CW re-enactment hats, nice framed collection of Pa. State Police insignia, plus many more surprises still to be unpacked. This is a sale you will not want to miss.

TERMS: CASH or Approved check.  
Food & Rest Facilities Available

AUCTIONEER: Ken Fleck AU002676-L  
Phone: (717) 939-8441

**Fleck Auctioneering**  
Complete auction service

496 Second Street  
Highspire, PA 17034  
(717) 939-8441

We are now booking 1995 Auctions, please call for available dates. WE are looking for quality consignments for upcoming Friday night sales.  
NEXT SALE: SEPT. 23, 6:00 P.M. Hummelstown Fire Company

SAT. SEPT. 17 - 8AM, 2 Day Public Auction Selling Pick Up Truck 4x4, Antiques, Guns, Toys, Books, Personal Property, Tools. Located 43 N. Kinzer Ave., New Holland, Pa. Take Rt. 23 To New Holland & Turn North On Kinzer Ave. Sale By, James Frankhouser Estate & Mary Frankhouser. Jay M. Leary & Randy L. Stoltzfus, Auctioneers.

er. Jay M. Leary & Randy L. Stoltzfus, Auctioneers.

SAT. SEPT. 17 - 8:30AM, Antiques, Fine China, Glassware & Furniture. Located At RD#1 Bainbridge, Pa. From Elizabethtown Take Turnpike Road (W. High St.) 4 Miles West To Black Swamp Road.

Left On Black Swamp. From Route 441 At Fal-mouth Go East On Turnpike Road 2 Miles To Black Swamp Road. Right On Black Swamp. Sale By, Walter Hess. Harold (Abe) Shaffner & Mark Diffenderfer, Auctioneers.

fer, Auctioneers.

SAT. SEPT. 17 - 8:30AM Real estate, train collection, tools, cars, truck, household goods. Held at 608 Owl Hill Rd., Warwick Twp., Lanc. Co. (Near Lititz). By B. Stanley Mellin-

ger Estate. Art Pannebeck, auctioneer.

SAT. SEPT. 17 - 9AM Anna Snook Auction, 38 E. Main St., Mount Joy, Pa. Antiques, household goods, all day. Keller, Auctioneers.



## PUBLIC AUCTION

REAL ESTATE

240 AND 242 CHAMBERSBURG STREET,  
GETTYSBURG, PA.

WED., OCTOBER 5, 1994  
TIME: 7:00 P.M.

**DIRECTIONS:** From the Square in Gettysburg, go west on Rt. 30 approx. 2 1/2 blocks. House on left. Signs Posted.

This double home is located in the Historic section of Gettysburg. Both sides has a kitchen, living room, sitting room and a full bath on the first floor. The second floor has 4 bedrooms and a full bath. This home also has an attic, basement, front porch, enclosed back porch, water, sewage, gas hot water heat, and a two car garage. The lot size is approx. 32 ft. x 180 ft.

Open House will be Sunday, Sept. 11th 18th & 25th from 2:00 P.M. to 5:00 P.M.

Any Questions, Please Call McNeal's Auctioneering at 717-545-5911.

TERMS: CASH or Certified Check in the Amount of \$5,000.00 for the down payment, made payable to Kenneth Woodward, due the day of the auction. Settlement within 45 days.

AUCTIONEERS:  
Richard and Rick McNeal  
Lic #s AU-001380-L and  
AU-002188-L  
Phone: 717-545-5911

Lancaster Farming, Saturday, September 10, 1994-E15

## PUBLIC AUCTION



SATURDAY, SEPTEMBER 24, 1994

AT 9:30 A.M.

Located one mile east of Berrysburg, PA along Rt. 25, Lykens Valley, PA. Nine miles east of Millersburg, PA on Rt. 25.

### REAL ESTATE - PARCEL #1 - 80 ACRE FARM IN BEAUTIFUL LYKENS VALLEY

A two story 6 room frame house with three bedrooms and a bath. Summer house with spring house on lower level, 4 bay bank barn, two story implement shed, pig stable, block chicken house, frame 6 bin granary, milk house, smoke house, (2) 2000 bu. wire corn cribs on cement, and other outbuildings. Two spring fed creeks on property, approximately 1450 ft. road frontage along Rt. 25. 64 acres tillable, also included in sale of farm is 16 acres of standing corn.

### PARCEL #2 - 15 ACRES OF WOODLAND

Located west of Pillow Gap on Mountain Road on south side of Mahantongo Mountain. Take Rt. 25 N of Berrysburg toward Pillow, approximately 2 miles to Mountain Road, approximately 2-3/4 miles west on Mountain Road to sale site. Approximately 275 ft. frontage along Mountain Road and rest lays north towards top of mountain. Look for sale sign at site.

TERMS OF REAL ESTATE: 10% down and other conditions the day of sale. For Inspection Call 717-896-8100.

AUCTIONEER NOTE: This is a beautiful farm in Lykens Valley and a nice piece of mountain ground. Be sure to inspect. Both parcels will be offered at farm site at 1:00 P.M.

### ANTIQUES & COLLECTIBLES

Swab Decorated Wagon Box (No Chassis) Decoration Bright; Decorated Large Wooden Wheel Barrow; Decorated Grain Cleaner; Potato Plow; Grindstone on Stand; 2 Horse Drawn Plows & Single Row Cultivator; 10 Ft. Meat Bench; Wooden Chicken Feeders; 2 Large Cider Barrels; Larenz Schmidt (Pottsville, PA) Wooden Whiskey Barrel; 1 Gal. Wooden Barrel; Peck Measure; Wooden Nail Kegs; Wooden Wagon Jack; Wooden Spoke Wagon Wheels; Iron Implement Seat; Wooden Rakes; Corn Choppers; Curry Combs; Wooden Pulleys; Grain Cradle; Chicken Crate; Milk Stool; Single & Double Trees; Jockey Sticks; Horse Harness; Bridle & Hanes; Cross Cut Saw; Straw Knife; Drawing Knife; Shoe Lathe; Hay Hook; Log Hooks; 3 Hog Gallows; 4" Pole Vice; String of 30 Clip On Sleigh Bells in Graduated Sizes and Others.

### TRACTORS, TRUCK & CORN

Ford (5000) Select O Speed Diesel Tractor; Ford (5000) Diesel Tractor; Ford (850) Tractor; Ford (8N) Tractor (All Tractors In Good Condition; Ford (1956) F-350 Dump Truck (4 Speed Transmission) Farm License and in Good Operating Order; John Deere (180) 17 HP Lawn Tractor with 38" Mower Deck; Approx. 35 Tons of 1993 Ear Corn.

### FARM MACHINERY

Ford (3 Pt. All Left) 4 Bottom 16" Plow; Ford (3 Pt.) 3 Bottom 14" Plow; Ford (3 Pt.) 14" Economy 2 Bottom Plow; Ford (3 Pt.) 2 Bottom 12" Plow; Sander Front End Loader; Ford 11 Ft. Transport Disk; Brillion 11 Ft. Transport Cultimulcher; 3 Pt. Three Section Lever Harrow; Ontario 14 Hole Grain Drill on Rubber; New Idea (#109) PTO Spinner Fertilizer Spreader; Ford (#501) 7 Ft. Rear Mount Mower; N.H. (#268) Hayliner Baler With Thrower; N.H. (#36) PTO 6 Ft. Crop Chopper; Gleaner (A) Self Propelled Bin Combine; New Idea (#19) PTO Manure Spreader; Smoker 24 Ft. Bale Elevator on Rubber; Case (E-2) 28 Ft. Grain & Hay Elevator on Rubber; Mayrath 20 Ft. Grain Auger Elevator; 2 High Rack Hay Wagons on N.H. Running Gears; Flat Bed Wagons; Int. (3 Pt.) 2 Row Corn Planter; Ford (#716) 8 Ft. Heavy Duty Tilt Blade; Ford (3 Pt.) 7 Ft. Cultivator; 3 Pt. Hitch Boom Sprayer; 9 Ft. Cultipacker & Mulcher; 2 Section Spike Harrow; Wood Frame 4 Shovel Score; 3'x6' Wooden Utility Trailer; Saw Buck & Stand; Giron (200 Gal.) Stainless Milk Tank; Double Stainless Wash Tubs; (2) Universal Milkers & Strainers; (2) 250 Gal. Gas Tanks & Pumps on Skids; 8 Ft. Pick Up Truck Cattle Rack; Hog Transport Box; (2) 6 Hole Galvanized Feeders; Galvanized Water Tubs; Lincoln (225 Amp) Electric Welder & Accessories; Steel Welding Table; Sanborn (1-1/2 HP) Air Compressor; Huskie 20 Gal. Twin Cycle Air Compressor; Dayton (30 AMP) Battery Charger; 2 Electric Fencers; Poulan (#361) 18" Chain Saw; Buffalo 1/2 HP Bench Grinder; Seymour Cattle Dehorner; Pot Belly Brooder Stove; Shoulder Tank Sprayers; Shoulder Seed Sower; Timothy & Grain Bags; Farm Seeds; Bailer Twine; Farm & Small Hand Tools as Shovels, Forks, Rakes, Barn Brushes; Scythe, Sledge Hammers, Ax, Fence Stretchers, Bars, Power Kraft 7-1/2" Circular Saw; Carpenter Saws, Hammers, Pliers, Chisels, Levels, 1/2" Drive Socket Sets, Pipe Wrenches, Wrenches, C Clamps & Etc.; 6 Rolls Chain Link Fence; Rolls of Electric Fence Wire & Accessories; Steel; Locust & Oak Electric Fence Posts; Sheets of 12 Ft. Galvanized Roofing; (2) Bundles of Wooden Shingles; Log & Towing Chains; Car Chains; Hay Rakes; 5 Gallon Grease Pump & Grease Guns; Barrel Pumps; Gas Cans & Funnels; Rope Block & Tackle; Endless Belts; Galvanized Chicken Fountains; Cow Chains & Kickers; Muskrat Traps; (2) New 700x16 Winter Tires & Other Tires; Ford 8N & 800 Tractor Chains; Used Pipe Boards; Pile of Welding Steel & Piles of Scrap Iron & Others.

AUCTIONEER NOTE: Sale will start with farm wagon items & collectibles. Real estate at 1:00 P.M. followed by large equipment.

TERMS: Cash or Approved Check.

ESTATE OF:

EARL L. MARKEL

Executor: Eugene W. Markel

Attorneys: Etweller & Radabach

AUCTIONEERS:  
David Delbler 896-8530 AU001213-L  
Ed Shoop 896-8305 AU000A42-L  
37 Sycamore Ave.  
Halifax, PA 17032

Lunch Stand Reserved

## PUBLIC AUCTION SALE

6.3 acres — FARM — 6.3 acres

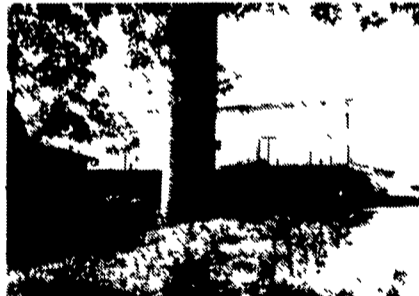
Auction Date - Thursday, September 29, 1994

6:00 p.m. at farm

Open for inspection September 24, 1994 1:00-3:00 p.m.

LOCATION — Stone Quarry Road, Leola — N.E. Lancaster Co., Penna.

DIRECTIONS: From intersection of Rts. 772 & 272, Brownstown, travel one mile south on Rt. 272, turn left on Stone Quarry Rd. to farm (1/4 mile).



Seller: David M. Weaver encourages you to prepare to buy on sale date. The circumstances are in your favor. See your lender now. The farm was under lease for several years and will be vacant for inspection.

Here's a comfortable brick and sided farm home having a large Family size kitchen, dining room and parlor, 4 bedrooms and full bath. There is also a 14 x 18 arch cellar for fruit storage. A hand dug well, cesspool drainage, attached 1 1/2 story summer kitchen (poor condition).

There are 6.3 acres including a large 42 x 100 bank barn with room for 5 acres of tobacco, granary, hay and equipment storage, lower stables (sturdy built), 2 story chicken house (poor cond.), carriage shed-equipment garage.

This property is just right for raising cattle and horses! With the large garden and fertile soil, your family could eat well and enjoy a little profit several ways, enjoying the outdoor Country Life and utilizing the land potential.

Terms — 10% of selling price deposit required, the balance on settlement on or before 1-2-95. Our Auction Day prices, whether higher or lower than any appraisal, are the truest value.

Auction conditions and agreement prepared and presented by Attorney Charles H. Benner 200 E. Main St., Leola, Pa. 656-4201

AU-001275-L  
PA. AUCTIONEERS  
APPRAISERS  
Licensed & Bonded Since 1974  
717-354-8453  
PAUL K. LANDIS  
& FAMILY  
49 N. Farmersville Rd.  
Ephrata, PA. 17522

WE SELL ANYTHING,  
ANYWHERE....

