

SAFEMARK

TACKLE the SAVINGS



ON TOP VALUE

SAFEMARK TIRES

QUALITY • SERVICE • DEPENDABILITY • ECONOMY

THE HARD WORKING MULTI-ANGLE M/B

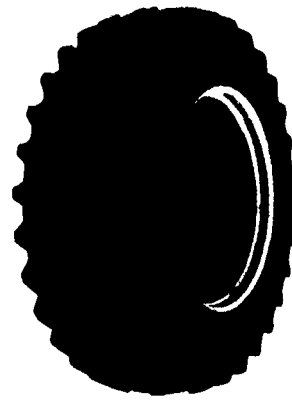
- Excellent drawbar pull with long-bar, short-bar lugs for improved traction
- Designed for improved stability and roadability, plus reduced vibration
- Strong angle-braced lugs have self-cleaning design
- High-strength polyester cord body, and heavy duty rim shield protects tire from damage



Size	Ply	Price
11.2x24	4 Ply	\$145.00
11.2x28	4 Ply	\$155.00
12.4x28	4 Ply	\$159.00
13.6x28	4 Ply	\$179.00
14.9x28	6 Ply	\$259.00
16.9x30	6 Ply	\$329.00
18.4x34	6 Ply	\$379.00
15.5x38	6 Ply	\$289.00
18.4x38	8 Ply	\$449.00

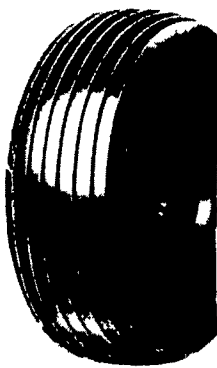
POWER MARK L/S RADIAL II Radial Rear Tractor Tire

- Radial performance at a significantly lower price
- New cavity shape for low carcass stress and long, narrow footprint, improved durability
- Unique longbar/shortbar tread design with increased lug count for excellent roadability
- Continuous no splice tread improves tire uniformity and eliminates open tread splices
- Belt package gives excellent bruise and puncture resistance
- Engineered to full Tire and Rim dimensions
- Heavy duty trash shield for extra bead area protection with pry notch
- Size markings on lug face for easy identification in storage



Size	PRICE
15.5R38 ★	\$349.00
18.4R34 ★	\$439.00
18.4R38 ★	\$509.00
20.8R38 ★	\$659.00
18.4R42 ★	\$659.00

FARM UTILITY WAGON TIRES



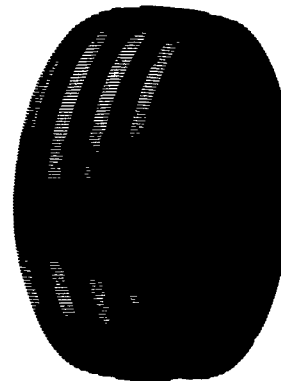
Size	Ply	Price
9.5L-14	8 Ply	\$44.00
11L-15	8 Ply	\$47.00
12.5L-15	8 Ply	\$64.00
12.5L-15	10 Ply	\$72.00
12.5L-16	14 Ply	\$89.00

SAFEMARK PREMIUM 3 Rib



Size	Ply	Price
5.00-15	4 Ply	\$34.00
6.00-16	4 Ply	\$36.00
6.00-16	6 Ply	\$39.00
7.50-16	6 Ply	\$56.00
10.00-16	8 Ply	\$82.00
11.00-16	8 Ply	\$99.00

POWER GLIDE 4 Rib



Size	Ply	Price
9.5L-15	6 Ply	\$ 77.00
11L-15	8 Ply	\$ 99.00
7.50-16	6 Ply	\$ 69.00
10.00-16	8 Ply	\$ 86.00
11.00-16	8 Ply	\$109.00

BATTERY BARGAIN



\$47
5-24 650 CA

-Dependable performance in all weather conditions

- Unique Bill board vent appearance
- Higher cranking than conventional batteries
- Sizes to fit most domestic and import cars and light trucks

FARM TRACTOR BATTERY

\$66
FC-30H 665 CA



- Rugged high impact case and cover for vibration resistance
- Increased starting power
- Built to last season after season
- Made in USA

A Proud Tradition of Quality, Value and Service

SAFEMARK

Division of Pennsylvania Farm Bureau

• QUALITY
• SERVICE

• DEPENDABILITY
• ECONOMY

CALL 1-800-PFB-TIRE For Dealer Nearest You

Participating SAFEMARK Dealers

- | | |
|--|---|
| <p>Adams
Mar-Bar Tire Service
Hanover, PA 17331
(717) 633-6412</p> | <p>Greene
Burns Tire Service
Waynesburg, PA 15370
(412) 627-8263</p> |
| <p>Biglerville Tire & Auto
Biglerville, PA 17307
(717) 677-8338</p> | <p>Lancaster
Leola Tire Service
Leola, PA 17540
(717) 656-2574</p> |
| <p>Blair
Rhodes Farm Supply
Williamsburg, PA 16693
(814) 832-2491</p> | <p>Messick Farm Equip., Inc.
Elizabethtown, PA 17022
(717) 387-1319</p> |
| <p>Bradford/Sullivan
Hiland's Farm & Home Service
Rome PA 18837
(717) 744-2371</p> | <p>Roadstar* Retreading
Quarryville, PA 17566
(717) 786-2178</p> |
| <p>Bradford
Isaac's Tire Sales
Canton, PA 17724
(717) 673-8121</p> | <p>Lebanon
Farr Family Tire
Palmira, PA 17076
(717) 838-0151</p> |
| <p>Centre
Dunkle & Grieb
Centre Hall, PA 16828
(814) 364-1421</p> | <p>Lebanon Valley Implement Co., Inc.
Richland, PA 17087
(717) 866-7518</p> |
| <p>Chester/Delaware
Enfield Equipment Inc
Oxford, PA 19350
(610) 932-8858</p> | <p>Lehigh
Kermit K. Kistler
Lynnport, PA 18066
(610) 298-2011</p> |
| <p>J&L Tire Service
Chatham, PA 18318
(610) 869-0450</p> | <p>Joe's Battery & Tire
Allentown, PA 18103
(610) 437-4961</p> |
| <p>S.G. Lewis & Sons
West Grove, PA 19390
(610) 869-2214</p> | <p>Mifflin
Miller-Lake, Inc.
Belleville, PA 17004
(717) 935-2335</p> |
| <p>Stoltzfus Farm Service
Cochranville, PA 19330
(610) 593-2407/2408</p> | <p>Northampton/Monroe
Northampton farm Bureau
Tatamy, PA 18085
(610) 759-3254</p> |
| <p>Clinton
Dotterer Equipment, Inc.
Mill Hall, PA 17751
(717) 726-3471</p> | <p>Northumberland
Rovendale Supply
Watsonville, PA 17777
(717) 538-5521
(717) 742-7521</p> |
| <p>Columbia
Steve Shannon Tire Co., Inc.
Bloomsburg, PA 17815
(800) 343-TIRE
Rte. 487, Benton, PA 17814
(717) 925-2821
Rt. 11
Danville, PA 17821
(717) 275-5506</p> | <p>Schuykill
Charles Snyder, Inc.
Tamaqua, PA 18252
(717) 386-5945</p> |
| <p>Cumberland
Barrick Tire Sales
Newville, PA 17241
(717) 776-5762</p> | <p>Somerset
Maple City Tire
Meyersdale, PA 15552
(614) 634-0545</p> |
| <p>Dauphin
Farr Family Tire
Middletown, PA 17057
(717) 944-4001</p> | <p>Union
Allen Hoover Repair
Mifflinburg, PA 17844
(717) 966-3821</p> |
| <p>Franklin
Forrester Farm Equip., LTD
Chambersburg, PA 17201
(717) 263-0705</p> | <p>Mifflinburg Farm Supply, Inc.
Mifflinburg, PA 17844
(717) 966-3114/3115</p> |
| <p>Stoneham's
Waynesboro, PA 17268
(717) 762-3814</p> | <p>Washington
Canonsburg Supply Equipment Co., Inc.
Canonsburg, PA 15317
(412) 746-2500</p> |
| <p>Bruce B. Gamble & Sons
Concord, PA 17217
(717) 349-2670</p> | <p>Wyoming
J. Roberts & Son Tire Co.
Meshoppen, PA 18630
(717) 833-5582</p> |
| <p>Fulton
Clugston Farm Equipment
Needmore, PA 17238
(717) 573-2215</p> | <p>York
Corn Hill Farm, Inc.
Etters, PA 17319
(717) 938-2012</p> |
| <p>Farmer's Brokerage & Supply, Inc.
Allentown, NJ 08501
(609) 259-7324</p> | |

NOW SERVING NEW YORK, NEW JERSEY & CONNECTICUT