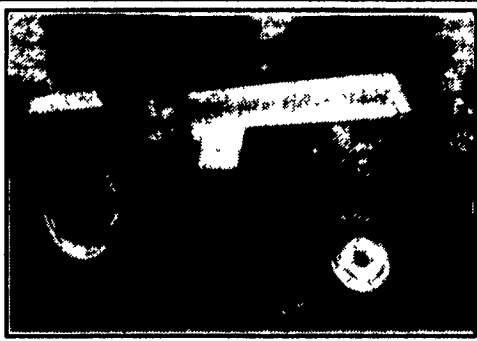


JD 2-30" chopper header, \$2,750.; IH 844 or 843 header. Call Stephen 717-249-2317

JD 213, 215 or 216 flex heads, \$4,450.; 444, \$3,450.; 443, \$4,250.; 643 & others. 717-249-2317



Late Model 2-70 White, 75 H.P., Red Stripe, 1500 Original Hrs., Adjustable Rear Wheels, Mint Barn, Kept.
Original Owner **\$11,900**
516-427-4671 After 8 PM

OLIVER CRAWLER PARTS
HG, OC-3, OC-4, OC-6 Our Specialty

NEW & USED



ZIMMERMAN OLIVER-CLETRAC

1450 Diamond Station Road, Ephrata, PA 17522
717-738-2573

We Ship UPS Daily

Monday To Friday 7 A.M.-5 P.M.
Evenings and Saturdays By Appointment

Corn Picker

NH 215, 216, 217
1 roll bed

717/784-6200

All Steel Frame Hay Wagon, 3x18
All Sizes, Steel Hay Feeders
24' Feeder On Whls.
Self Locking Panels

J & L EQUIPMENT
St. Thomas, PA
717-369-2637

Madey Farms
Windber, PA (814) 467-8839

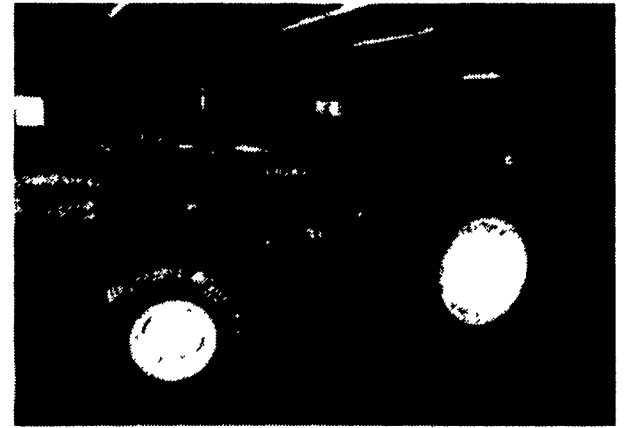


Case 2500, C/A, 180 HP, Power Shift, Rebuilt Engine \$16,800

IH 5488 C/A, 187 HP, New 20.5x38 Rubber, 2800 Hrs. \$23,900

IH 1466 C/A, rebuilt eng, dual PTO, TA 20.8 radials
IH 1066 Cab & Air, rebuilt engine, nice..... \$10,800
Case 2290 Cab, Air..... \$12,900
Case 1070 fender tractor, nice..... \$7,300
Case 1030 diesel..... \$4,800
JD snow blower, front mount 5 1/2 ft, like new
IH 656 diesel, hydro, 38" rubber, nice..... \$6,800

INVESTMENT TRACTORS FOR SALE



1951 JD AR, Nicely Redone, New Tires

- 56 FERG 35 New (0 Hours) Not Redone- Brand New!!!
- 57 JD 320S 3 Pt.-Clean Original- Above Average
- 59 JD 330S Runs Good- Nicely Redone- Good Tag
- 56 JD 420S 3 Pt.- As Received
- 56 JD 420U Rare Options- Clean
- 58 JD 530 S/N 45- Fenders- 3 Pt.- Loader- As Received
- 60 JD 530 3 Pt- Power Steering- New Frt Tires- Redone
- 57 JD 620S Standard- Nicely Redone- Well Above Average
- 56 JD 70S Standard- Diesel- Good Tin- Good Rubber
- 58 JD 720 Pony- WF- 3 Pt- Runs OK- Nicely Redone
- 59 JD 730 Fenders- 3 Pt- DE- Needs Engine Work
- 59 JD 730S Pony- Standard- Nicely Redone
- 55 JD 80 Off Farm Condition- Fair Tires- Good Tin
- 56 JD 80 As Received
- 58 JD 820 Runs- No Pony- Poor Tires- Fair To Gd Tin
- 60 JD 830 Cab- Pony- PTO- As Received
- 59 JD 830 Pony- Poor Tires- Good Tin- Runs
- 59 JD 830 De-Overhauled- 80% Tires- Good Tin- Redone
- 45? JD A Starter- Lights- Clean Tin- Runs Good
- 36 JD A Unstyled- Runs Good- Easy Restore- Good Tin
- 35 JD A Unstyled- Good Tires & Tin- Decent Paint
- 37 JD A Unstyled- Factory Steel- Runs Good
- 51 JD AR Styled- Nicely Painted- New Rear Tires
- 50 JD AW WF- Fenders- Clean- \$2000 Engine Work Done
- 44 JD B - Running - Fair Tin & Paint
- 49 JD B Cyclone- Starter- Lights- Cult- As Received
- 49 JD B Clean Tin- Poor Tires- Hand Start
- 40 JD B w/Cult- Fair Tin- Good Tires- Runs Good
- 41 JD B Decent Tin & Tires- Runs Good
- 43 JD B Styled- Runs Good- Looks Good
- 41 JD B Styled- Runs Good- Looks Good
- 37 JD B Unstyled- New Rear Tires- Decent Paint
- 37 JD B Unstyled- Spokes- Nicely Redone- Gd Tin
- 47 JD D As Received
- 50 JD D As Received
- 47 JD D Styled- Loose - Not Running
- 41 JD D Styled- Hand Start- Good Tin- Decent
- 49 JD D Styled- Runs- Nicely Redone
- 38 JD G Unstyled- Good Tires- Good Tin- Being Redone
- 50 JD G Try- Decent Tin- Runs Good- Needs Paint
- 51 JD G Runs - As Received
- 50 JD G As Received
- 41 JD G Unstyled- Last Full Year Of Prod.- Nice Unit
- 51 JD GW WF- As Received
- 45 JD H PTO- Hyd- Starter- Running Condition
- 40 JD L w/Pulley--Good Tin- Needs Restored
- 38 JD L Very Good Tin- Runs Good- Easy To Restore
JD L/LA Cultivator
- 43? JD LA Fair Tin- Good Tires- Runs Good
- 49 JD MT Fenders- Weights- Fair Tin- To Restore- Runs
- 50 JD MT Widefront- Runs- To Restore
- 52 JD MT w/Mower- Fenders- Decent Tin- Runs Good
- 53 JD R Runs- Needs Restored
- 60 MF 98 GM Diesel- Runs Good- Nicely Redone
- 53 OL 66 Widefront- Fenders- Nice Tin- 2 Remotes
- 60 OL 990 GM Dsl- Poor Tires- Good Tin- Runs Good

I Will Buy Clean Or Odd John Deere's. Buy-Sell-Trade.
Lots Of Older Sales Literature, Toys And Pedal Tractors For Sale.
Lots Of Owners Manuals/Parts Book — Call.

LLOYD WENGER

251 S. Race St., Myerstown, Pa. 17067
717-866-2130 Days 717-866-7147 Evenings

TANEYTOWN FARM & HARDWARE
410-751-1500

Bush Hog® King Cutter
Ingersoll Garden Tractors



Ross Forklift, runs excellent \$2,900



Case 585, New Rubber \$6,000



White 2-150 \$5,900



MF 265 2400 Hrs. \$7,900



MF 2805 w/Cab \$5,900



Ford 6710 4x4 w/cab & air \$15,900

- | | | | |
|-------------------------------------|-----------|---------------------------------------|-----------------|
| MF 1020 4x4..... | \$7,900 | OMC 14 HP Skid Loader, Good Cond. | \$2,495 |
| MF 210 4x4..... | \$5,900 | Int. 3450 round baler..... | \$4,900 |
| MF 65 NF, Excellent..... | \$2,750 | NH 519 Manure Spreader..... | \$1,250 |
| Case SC/Cultivators, one owner..... | \$1,595 | NH 513 Manure Spreader..... | \$1,995 |
| 9N Ford..... | \$1,350 | Cardinal Field Sprayer..... | \$2,495 |
| Eager Beaver..... | Less Than | NI outdrier #270..... | \$795 |
| 10 Hours, Limited..... | \$4,500 | Shaver drivers:HD8, \$1,995 HD10..... | \$1,695 |
| NH 450 mower..... | \$795 | 10' Bush Hog® mowers..... | \$3,695 |
| Oliver 1850, Perkins..... | \$3,900 | 20% off list on all Bush Hog® | |
| Woods C80 mower..... | \$495 | loaders..... | Call For Prices |

Fall Consignment Sale Will Be Saturday, October 29

HARD HOSE IRRIGATION REEL

For Manure or Water

• Strong • Simple • Dependable

WATER YOUR CROPS & IRRIGATE YOUR MANURE



Model 3250 Shown - 3.25"x850' Hose

Units Available For Immediate Delivery

CUSTOM IRRIGATION ALSO AVAILABLE
WE ALSO SELL PUMPS, PIPE & AGITATORS

MID-ATLANTIC AGRISYSTEMS

3053 Barren Rd., Oxford, PA
800-222-2948

ENFIELD EQUIPMENT INC.

220 WHEELER SCHOOL RD
WHEELER, MARYLAND 21160
1.2 MILE WEST OF Rt 10
ON Rt 10
410-452-5252

6600 TIMESTONE RD
Rt 10
OXFORD, PA
215-932-8858

HOURS: MON-FRI 8-5
SAT 8-12

Patz



TRACTORS

- JD 4630 Tractor w/Cab, Reconditioned
- JD 4030 Tractor w/Cab
- JD 3020 Tractor
- JD 2840 Tractor
- JD 2755 Tractor 2WD w/Cab
- JD 2750 Tractor 2WD
- JD 2550 Tractor MFWD w/Loader
- JD 1070 Tractor
- JD 1050 Tractor MFWD w/Loader
- IH 1086 Tractor
- IH 504 Tractor
- IH 454 Tractor
- IH 404 Tractor
- IH 284 Tractor
- Ford 8N Tractor
- David Brown 1210 Tractor

HAY EQUIPMENT

- JD 346 Baler w/Ejector
- JD 337 Baler w/Ejector
- JD 336 Baler w/Ejector
- JD 430 Round Baler
- NH 456 Round Baler
- NH 1499, 1100 Hrs., Excel. Rills
- NH 489 Mower Conditioner
- JD 3940 Forage Harvester
- JD 3940 Forage Harvester
- JD 890 Forage Harvester w/5 1/2' Pickup & 2 Row Wide

PLANTERS

- AC 333 4 Row, Air Champ., Dry Fertilizer
- JD 315 Disc, Like New
- Used JD 8250 Grain Drill

COMBINES

- JD 6600 Side Hill Combine, Reconditioned
- JD 220 Flex Platform
- JD 843 Corn Head
- MF 750 Combine w/13' Platform & 6R Corn Head Reduced Price

MISCELLANEOUS

- Krauss Wing Fold Disc w/Cultipacker
- JD 1508 Rotary Mower
- Rhino 20' Bat Wing Mower
- JD 1508 Rotary Mower
- Case Model 14, 9 Shank V Ripper
- Used JD 27 Flail Shredder
- JD 2500 5 Bottom Plow, Spring Reset
- JD 230 Disc Wingfold
- JD 780 Manure Spreader
- JD 450 Manure Spreader