

CENTRAL VIRGINIA FARMS: Farms available from 5 to 500 acres, reasonable prices, very low taxes, farmer friendly communities, agricultural economy, free catalog.

State Wide Realty Co.
Farmville, Virginia
804-392-6163
Farms & Rural Properties
Low Prices, Low Taxes, Free Catalog

**PENNA FARMS
CUMBERLAND COUNTY**

153 acres, opened & wooded land, shale soil. Topography gently rolling, Newville area. \$1,000 per acre.

Charles Wenger, GRI, 263-0945
Wilbert Diehl 776-7707

**GEORGE L. EBENER &
ASSOCIATES REALTORS**
139 W. High St., Carlisle, Pa.
Ph. (717) 243-6196

Potter County - Excellent hunting on this 92 ac. property, could also be used as horse or beef farm with 2 barns, and 2 bdrm house. All this for only \$115,000. #1336

129 acre dairy or general farm, more acreage available, 75 cow stall barn, 3 bdrm ranch style home, only \$149,900 #1274

Dwelling Unit + Bobby G's Bar with dance floor, kitchen, 8x16 walkin cooler, 2 restrooms + much more. Call for details \$115,000 #1332

Beautiful acres, full of wildlife, orchards, approx 50+ woods, 2 sty home w/some remodeling, large Lr, beautiful kit w/woodmade cabinetry. Total acreage of 92.41, now asking \$125,000 #1337

Hook 9 Cone Street, Wellsboro, PA 16901
717-724-3500
REAL ESTATE AND INSURANCE



200,000 LAYER OPERATION
Located in southern Lancaster County. Financial information available to qualified buyers. Modern facility with up-to-date equipment & back-up generator system. Agricultural zoning. 5 Bedroom home included. Call 1-800-325-2131. Q11522

113 ACRES
\$100,000 Dairy farm with 93 acres tillable, stanchions for 51 excellent crop land.
Somerset Co. 1 mile N.W. from intersection of 219 & 653.

AMERICAN HERITAGE Willow Street 717/464-4700
Quarryville 717/798-2131
Strauberg 717/687-0699

LAND WANTED

ATTENTION FARMERS AND LANDOWNERS
DEAL DIRECTLY WITH DEVELOPER. LAND MUST BE IN CHESTER OR DELAWARE COUNTY.

REPLY TO:
P. O. BOX 902
THORNDALE
PA 19372

Thinking of marketing your farm?
You need to call on the experience of Harry Zimmerman for professional confidential service.
Specializing in tax deferred exchanges.
TOWN & COUNTRY REALTY
717-299-4885 OFFICE
717-355-2048 HOME
1-800-472-2641
717-575-2542 CAR PHONE



Berks Co., 10 Acre Farmette.
2 story farm house, 5 bedrooms, 2 full baths. 40x96 implement shed w/1/2 insulated and heated. 20x28 Harvestore silo. 52 stanchion dairy barn. Hi-tensile fenced pasture with stream.
610-682-6443

**Exclusive Listing
South Central PA**

Very modern dairy operation, 200 plus acres and 175 plus free stalls. Very labor efficient, excellent milk to man hour ratio. Additional lease land available. Need strong Buyer, Seller is tired not broke.

NORTHUMBERLAND COUNTY

48 Acre General Farm, near Watsonstown, 3 bedroom brick house, bank barn, 2 silos 16x60 & 16x40, loose housing w/bunk feeder. Limestone soil, all tillable. \$169,000.

Harry Zimmerman
717-299-4885; 1-800-472-2641

Town & Country REALTY

1271 Litz Pike
Lancaster, PA 17601

**CENTRAL PENNSYLVANIA
FARMS, FARMETTES, LAND
AND CABINS**

Our Farm and Land Division currently has many farms, farmettes, land parcels, and cabins available in central Pennsylvania. We would be happy to send you a free farm and farmette list and/or rural land and cabin list.

See the July 30th & August 27th issues for a complete farm and farmette inventory

Farm and Land Division

Fred Strouse (814) 364-1705
Mel Rockey (814) 466-6688
Terry Gingher (814) 364-1169
Jim Harpater (814) 238-2525

KISSINGER BIGATEL & BROWER
Realtors

245 S. Allen St.,
State College, PA 16801
(814) 234-4000
1-800-576-3395



MALONE, FRANKLIN COUNTY, NEW YORK VEGETABLE/POTATO FARM OR DAIRY FARM
1200 Acres w/700 tillable acres, 500 wooded, 77'x177' pole barn w/ loading dock containing 45'x55' refrigeration cooler; repair shop; fertilizer storage w/4' concrete containment walls, tools, and equipment buildings, quonset building, dairy and calf barn w/attached 98 head free stall, 4 large forage silos, 3 steel grain silos.
All tillable land in use, growing mostly spinach & cauliflower, and some field corn; 4 bedroom single family home with modern kitchen and inground pool; 2 bedroom mobile home. EXCELLENT MULTI-PURPOSE PROPERTY.

Ideal for various vegetables. Property can be subdivided. Ideal commercial campsite location bordering Trout River. Asking \$475,000.00, possible financing. VCR tape available.

For Details Call Century 21 Fleury Realty
Malone, New York 518-483-4000, or
Jerry Shulman Produce Shipper, Inc.
Port Jefferson Station, NY 1-800-643-7776 All States

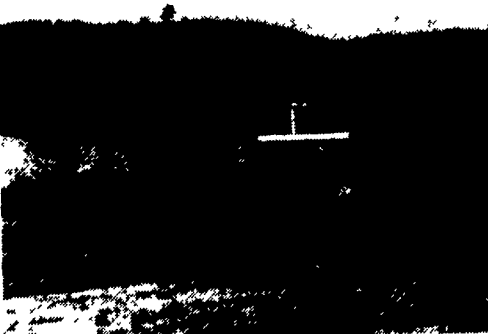
**Special Advertising Deadline
For September 24 Issue**

Because of the street fair in the town of Ephrata where *Lancaster Farming* is published, Classified Ads for this section C (all classified ads other than farm equipment) in the September 24 issue will need to be into our office by 5 p.m. on Tuesday, September 20. We appreciate your effort to help us meet these deadlines.

**SCHUYLKILL
COUNTY, PA**

Approx. 170 Acre Nursery and Christmas Tree Farm. Turn-Key Operation-Complete. Since 1946. Quality known nationwide.
717/345-4952

**Bradford County, PA
Columbia Cross Roads**



240 acre Farm, 2 houses, 2 barns (180'x85'), (40'x160'), 2 - 24'x90' concrete silos, complete manure facilities & storage buildings.
610-273-3761

Southern Lancaster County Farm

80 Acres (+/-) of very level ground. Over ninety five percent tillable. Buildings include large bank barn, metal pole building, bunk feeder, milk house and parlor. Five silos, including two Harvestores. Large two family farm house with outbuildings. In established Amish community only one mile south of the Buck. This farm has not changed ownership in two generations. Offered at \$490,000.00.

"Available Exclusively Through"
David L. Fite Realty, Ltd.
23 Shady Lane P.O. Box 673
Quarryville, Pa. 17566-0673
Phone: 717-786-1725 or
Fax: 717-786-3250

Before you list your farm, ask any realtor if they can offer five generations of experience in the Cattle Industry, nationwide and international contacts, one of the largest cattle businesses in the country. Then give us a call.

GOOD NYS FARMS

#1349 - GREAT BUY! 370 acres, good crops, lots of pasture. 100 tie stall 2 story barn, lagoon, 3 silos, 8 room home. \$185,000. 20,000# herd available with large line of equipment.

#1279 - 245 acres, well drained flat land. Good alfalfa ground, 85 tie stalls, 2" pipeline, 1000 gal tank, 3 big silos, 9 room home plus mobile home. Priced reasonable \$275,000. \$190,000. assumable FmHA Mtg.

#1348 - A good small farm with nice buildings, fantastic views, good alfalfa land. 105 acres 2 story 50 cow barn, silo, 4 bedroom home. Close to hospital, schools & shopping. \$150,000.

Free Farm List Available

POSSON REALTY

RD#3 Box 272
Norwich, NY 13815
(607) 334-9727

36 REAL ESTATE

Northumberland County, PA
27 Acres Secluded Farmette w/Remodeled House, New Horse Barn, Lighted Riding Ring and more.

Call for details.
RE/MAX Real Estate Team
(717) 374-9999
ask for Martha Ross

WE PAY CASH

For owner Financed Mortgages, Trusts, Divid. Business Interests from all States.

Cash today is worth more than cash tomorrow.

Why Wait? For a free quote please call

GROFF FUNDING
717-664-5241

Beautiful farm in southern Cecil Co. with 51 acres including a goose pit. Fields currently leased and 2 houses plus mobile home are rented for great income. Nice location for a getaway near the water. Call Doris for information at Century 21 Ulrich & Co. 1-800-248-3068

112 Acres in Jefferson County, NY

Mostly Tillable. Excellent Corn and Alfalfa Ground, PH 7% Barn Ties 76, New in 92 Milk House, 2" Pipeline and 1500 Gallon Bulk Tank. Remodeled Farm House.
(315) 629-0417
After 7PM.

FARM FOR SALE- CHESTER COUNTY

94+- acre farm with house and barns suitable for dairy, horse or development; milking parlor, free stalls, manure tank, silos and sheds. Shown by appointment only.

Call Diane Cheek at **CENTURY 21 Wagner-Hatton**
(610) 869-2110 or (610) 932-4576 in evening.