

WANTED: Dodge 250 or 350, 4x4, Cummins 5 speed cab and chassis. 804-332-5230.

WANT: Snow plow for Chevy S-10 or Blazer. (215)794-8004

WANTED: Conventional freightliner, between the years 1975 to 1985 w/ aluminum frame, sleeper, jake brake, 13 speed VT903 engine. 302-398-8754.

Reo's 1974, need work, \$2,200 each (2). (717)393-2992.

Storage Trailer, 8'Wx40'L aluminum, \$600 each. Call Bill 610-754-6298.

Truck Boom, folds up behind cab, 25', 4000lb., IM-TCO. \$8500. 717/354-3105.

JONES CENTER

IS YOUR

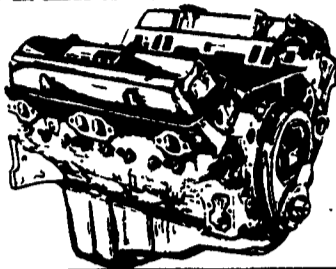
Goodwrench ENGINE HEADQUARTERS

GM GOODWRENCH 350 V8 1973-85
Part Number 10067353

New Engine - Not Rebuilt
36 Month or 50,000 Mile
Warranty

\$1199⁰⁰

New Engine - No Core Fee



HIGH PERFORMANCE ENGINES NOW IN STOCK
350-300 H.P. — **\$1695⁰⁰** 350-345 H.P. — **\$2825⁰⁰**

Call 394-0711 for prices on other New or Remanufactured Goodwrench Engines. 2.5 Liter thru 454 cid. Gas and Diesel

Chevrolet - Pontiac - Olds - Buick - Cadillac - GMC

JONES GM PARTS CENTER

1335 Manheim Pike, Lancaster, PA 17604

Hours: Mon.-Fri. 7:30-5
(717) 394-0711



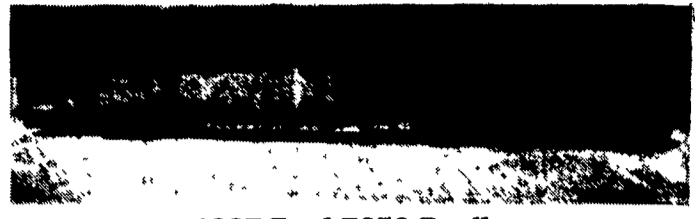
Mr. Goodwrench



OVER 90 TRUCKS



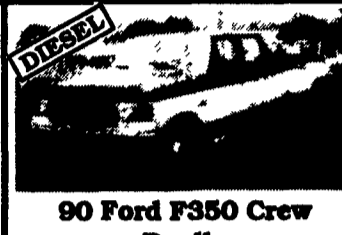
1988 Chevrolet C2500 Ext Cab
350 Auto, A/C, PW, PL, Kodak Conv., Maroon #C194



1987 Ford F350 Dually
460, Stick, Blue, 48,900 Miles, With 43'-2 Car Trailer, Gooseneck Ready To Haul Cars or Hay, Selling As Unit #F265
\$10,950



1992 Ford F350 Flat Bed
7.3 Diesel, STK, AC, XLT, PW, PL, CR, Tilt, Black, 23273 Miles #F269



90 Ford F350 Crew Dually
Diesel, 5 OD Manual, A/C, PW, PL, CR, Tilt, Blue/White #F250



89 Chevrolet K3500 Ext Cab
Diesel, Auto, AC, 4x4, Feading Box, Black/Silver #C200



88 GMC 3500 10' Dump
350, V8, Auto, 10' Dump w/Drop Sides, Wide Body, Nice Shape, 52244 Miles, Yellow/Black #G121



1989 Chev C1500 PU.
6.2 Diesel, Auto OD, A/C, PL, PW, CR, Tilt, Silverado, Blue/Sil #C191



1989 GMC K1500 4x4
350, Auto, A/C, PW, PL, CR, Tilt, Choo-Choo Conversion, Excellent Condition, Blue, 58851 Miles #G120

LANCASTER'S LARGEST GM Truck Dealer & We're Getting Bigger




JONES PONTIAC • HONDA GMC TRUCK

1335 Manheim Pike, Lancaster

Prices based on straight sale, Tax & Tags extra. Trades accepted at actual cash value. Must present this ad at time of purchase for sale price.

717-394-0711

JONES BEST BUY USED TRUCKS

 '90 FORD RANGER 4x4 XLT, 5 Spd., V6 #5403 Was \$9,900 SALE \$7,300	 '90 CHEV XCAB 4x4 AT, AC, V8, Silverado, Was \$17,995 #5422 SALE \$16,050	 '88 CHEV K2500 4x4 AT, AC, V8, Scottsdale #5430 Was \$11,995 SALE \$9,700	 '89 CHEV SUBURBAN 3/4 4x4 , AT, AC, V8, Silverado #5421 Was \$18,900 SALE \$15,200	 '87 SUZUKI SAMERI 4x4 AT, 4 Cyl., Conv. Top #5469 Was \$5,495 SALE \$3,950
 '91 CHEV S10 4x4 V6, 5 Spd., PS, Tahoe Was \$11,995 #5452 SALE \$9,850	 '91 CHEV S10 XCAB V6, 5 Spd., PS, Durango #5351 Was \$9,995 SALE \$7,550	 '94 GMC HD 3500 DUMP 10' Dump, 15000 GVW, 454, #10363NEW, List \$28,084 SALE \$24,990	 '91 FORD EXPLORER XLT AT, AC, V6, 4Dr, 2 Wheel Drive, Was \$13,995 #5435 SALE \$10,900	 91 GMC JIMMY 4x4 AT, AC, V6, SLE, Black #5467 Was \$17,995 SALE \$15,800
 '92 GMC C1500 AT, AC, V6, 12,000 Miles #5337 Was \$14,400 SALE \$11,700	 '94 SAFARI XT CARGO VAN AT, V6, PS, Side & Rr. glass, 33 in stock #10246 List \$17,332 SALE \$15,850	 '94 GMC Cube Van AT, AC, 350, 16' Body, Flat Floor, 11,000 GVW New-Was \$26,100 #10094 SALE \$22,075	 '88 CHEVY XCAB 3/4 Ton , AT, AC, V8, Silverado, Was \$13,995 #5440 SALE \$11,900	 '90 CHEV S10 BLAZER 4x4 V6, 5 Spd., AC #5466 Was \$12,995 SALE \$10,800
 '91 CHEV SUBURBAN 4x4 AT, AC, V8, 8 PASS. #5410 Was \$19,900 SALE \$16,900	 '92 GMC XCAB 4X4 SLE, V8, AT, AC, #5293 Was \$21,900 SALE \$19,300	 '92 FORD AEROSTAR Cargo Van AT, V6, PS #5371 Was \$14,700 SALE \$10,700	 '93 CHEV 3/4 CARGO VAN AT, V8, PS, White #5356 Was \$15,995 SALE \$13,900	 '93 GMC YUKON 4X4 V8, AT, AC, SLE #5453 Was \$24,995 SALE \$22,975