

Pygmy goats 2 females born 6/94 \$100 each; 2/\$150 Mont. Co. 215-257-7583 after 5 p.m.

Shade trees, pin oaks, sweet gums, evergreens, white pine, colorado blue spruce, hemlocks, wholesalers. 1-800-468-5524 or 717-665-7917 evenings.

NI 325 picker 2RN 12 roll good cond. \$3000. 702 Uni 3 m 727 husker, Union Co. 717-966-3760.

JD unstyled D 1930 on steel wheels \$1805. Cumb. Co. 717-486-5087.

Behlen corn crib 17x15'H Little Giant corn drag. York Co. 717-432-3653 after 5:30 p.m.

JD 450 crawler loader 75% undercarriage, 4 in 1 bucket, Perry Co. after 5 p.m. 717-582-4672.

1944 John Deere A field ready call 717-334-8664 after 5.

JD sickle bar mower Model 50, belly mount between wheels \$1500 OBO. Wanted 250 A mig welder, perfer Miller, Westmoreland Co. 412-788-0524.

Straight blade w/all hydraulics for Cat D2 S/N 3J6996 Monroe Co. 717-595-7970.

Yearling shorthorn bull suitable for heifers. Baltimore Co. 410-357-5764.

JD 14T baler, needs work, oak barn beams, JD flail chopper. Chester Co. 717-529-1069.

Beautiful German Shepherd mix puppies, four all white, four black and tan, ready to go. Wormed \$100 ea. Bucks Co. 215-536-4482.

"L" shaped 3 pt. carrier w/removable sides hvy. duty \$125 OBO. Box shaped 3 pt. carrier (needs floor) \$25 OBO. Lehigh Co. 610-799-2536.

100 split locust posts \$3. ea. Lanc. Co. 870 King Pen Rd., Kirkwood, Pa. 17536.

Farmall M tractor \$850, also NH 770 N2 com head \$485. Lanc. Co. 717-354-5360.

Honda 8 HP w/2 to 1 reduction speed clutch, also 14 HP Kawasaki engines w/2 to 1 reduction \$400 ea. free shipping A-1 cond. Cumb. Co. 717-423-5358.

Houle 32' Agl pump 3 yrs. old good cond. Cumb. Co. 717-530-5207 eves.

1 doz. Pinto \$1, 10 doz. qt. jars \$2, clytone clover seeder \$10, L. Chairke mantle clock \$80, 3 of 8' chicken feeder. 717-354-0616.

IH 966 tractor, year around cab, 75% radial rubber, very good cond., \$9,500 selling! Moved to Farnette. Lanc. Co. 717-653-0687.

Wide mouth glass gal. jars 50 plus cases resealable \$1 per case all or separate. Camden Co. 609-768-1867.

IH 2 MH corn picker shed kept. York Co. 717-244-9475 eves.

16"x7'-8" auger for Kasten forage wagon, like new. Wanted corn chopper to put on ft. York Co. RR1 Box 323, Line Rd., Delta, Pa. 17314.

Oliver Cletrac H G wide track runs must sell best offer. Bucks Co. 610-346-8952.

NH 770 harvester, 1 pair work horses. Lanc. Co. Elmer S. Esh, 440A Peters Rd., Gordonville, Pa. 17529.

Like new Ford model 930A 72" 3 PH finish mower used less than 10 ac., \$1450, 4' landscape box \$200. Augusta Co. 703-886-3157.

NH #8 forage wagon \$2400, int. forage wagon tandem axle \$1800, fiberglass taper for pickup truck \$100 OBO. Lanc. Co. 717-445-6402.

Woodworking jointer 18"x7' \$450, 35 rollup doors 4'6"x7' \$50 ea., barn door track rollers. Lanc. Co. 717-548-3968.

Rascal elect. mobility scooter w/2 brand new 2 deep-cycle batteries, it is not in operating cond. Vernon Charles, Lanc. Co. 717-898-8679.

20' Silo-o-matic ring-drive unloader, silo chute hopper, down spout for clean chute, 8 pieces silo chute, Berg barn cleaner unit. Berks Co. 717-933-4616.

Tool-cribbing 12-8' sections 3'x12' alum. dock board, 50 gal. drum lift tilt, 40 pieces HD shelving all cheap call for prices. Bucks Co. 215-968-5604.

Allen's parlor stove \$150, burns both coal & wood, call after 5 PM or weekends. Honey Brook, Chester Co. 610-273-9398.

Gravity bin 275 bu. McCurdy rusted & repaired 10 ton chassis 11x15 tires extended tongue \$950, int. stalk shredder no. 50 12' w/cyl., \$900. North'd. Co. 717-758-3387.

JD #234 corn head off 55 combine field ready or for parts \$100. Carroll Co. 410-756-2828.

Black standardbred gelding 3 yr. old \$1200. Lanc. Co. Roy A. Miller, 30-A Durlach Hill Rd., Stevens, Pa. 17578.

AKC Rottweiler/purebred pups shots, wormed, come & pick yours out, large boned very cute, 1 male, 10 females. Lanc. Co. 717-656-3050.

1630 Jamesway TMR stationary w/rebuilt scale 7 1/2 HP motor s/s liner \$5000 OBO. North. Co. 610-588-4931.

1070 Case tractor Agri King, run's very good ready for work. 717-656-0776 between 7-7:30.

Locust post ready to use most of them split \$2.50 ea. Lanc. Co. Christ D. Beiler, 74 Iva Rd., Paradise, Pa. 17562.

NH 271 baler completely rebuilt engine & baler 1 yr. warranty. Lanc. Co. Sam J. Esch, 1324 Village Rd., Strasburg, Pa. 17579. 717-687-0321.

Calf kennel 1st farm east of White Oak Rd. Enos B. Stoltzfus, 119 Lower Valley Rd., Christiana, Pa. 17509 or call Charlie in eve.

Top Quality Hay, Straw, Oats, Steer hay 140 per ton and up, mulch hay, Call before 7 AM or after 7 PM. 201-735-8389 or 201-735-8865.

Case 800 loader in running condition, \$2500, Oliver 62-T baler w/motor works o.k., \$750. Ben L. Stoltzfus, 5395 James Rd., Mechanicsville, MD 20659.

Specializing in pleasure Tennessee walkers. Always a good selection of trail & show horses. Yearlings, broodmares. Stud Service. Lester Weber Stables. 215-267-7311.

Reg. Angus bulls and heifers. Orange Gate Angus Farm, Maurertown, Va. 22644. 703-459-3414.

Used Bee Equipment. Inverbrook Apiaries, RD2, Box 230, West Grove, Pa. 19390. 215-869-3353.

MINI LOP RABBITS with papers, \$25. Very loveable pets. NZW Rabbits with papers, \$10. Cecil Co., Md., 301-885-2134.

Calf Hutches \$90. David B. Stoltzfus, 57 Grist Road, Nottingham, Pa. Lanc. Co. Brown Rd. at Little Braton Second Road Right.

Rock Oak, 1" to 1 1/2". Also, Cherry and Poplar. After 5 p.m., 717-776-3239.

12 yr. QH, Bay trail horse. 12 yr. fl Arab, sharp, endurance, competitive trail horse. Have shots, new shoes. 717-432-9282.

BOOKS in all fields bought, sold, and appraised. Exp. Pennsylvania/German. Call Ron. York. 717-235-2134

Fickes Silo, 26x70, concrete unloader, completely rebuilt, never used, electric wench. 608-235-3810.

Purebred Yorkshire & White Crossbred boars, gilts, bred gilts w/performance data, local delivery available. Cumber. Co. 717-732-5223.

Old farm toys, pedal tractors, misc. advertising, very large selection, shown by appointment prices negotiable. 717-866-4327 eves.

Slate roofs repaired, also general repairs dealer for Fiberdome products, fiberglass feed bins, calf hutches, feed carts, etc. 717-687-8069 after 6.

Lots of farm sales literature. All makes, very good selection. Call 717-866-7147 eves.

Hipolito lantern sales & service peerless storage batteries 4 yr. guarantee very reasonable Sharpening & Engine Service, Hidden Acres, Old Rt. 41, Atglen, Pa. 19310.

Nylon horse halters, different colors & sizes. Also cow bands. John K. Stoltzfus, 277 Maple Shade Rd., Christiana, PA 17509.

Registered miniature horses starting at \$600. Miniature potbellied pigs 200-50. 302-653-5305.

Single trees 1-8 hitchers, yokes, pokers, cup and pot hangers, weaner roasters, ice scrapers, shoe scrapers. Chester Co. 215-273-2112.

Lots of Antiques and Collectibles, will sell one or all. 1-703-636-6285 call after 7 p.m.

256 acres upstate NY 75A hay, 50A pasture, barn, also Frystown, Pa. 8 yr. old 2 1/2 story home, 2100 sq. ft, 2 acre garage \$137,900. Leb. Co. 717-933-5648.

Rabbits, Californians & Champagne's for meat or show. Ed Hildebrand 985 Flohr's Ch. Rd., Biglerville, Pa. 17307. Adams Co. 717-334-3984.

Two 1953 Dodge 1/2 ton pick-ups, corner glass, running cond. \$1500 or make offer. Montg. Co. 215-933-2469.

Calf hutches, David B. Stoltzfus, Lanc. Co. Brown Road at Little Braton second road right, second lane left. 57 Grist Rd., Nottingham, Pa. 19362.

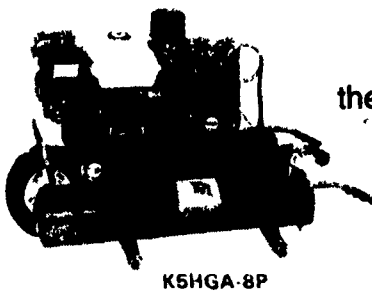
Baler twine quantity discounts, calf hutches, calf kennels, plywood feed bins. Lanc. Co. 717-442-8972.

Roadside stand with side opening shelves, attic also Univex mies model M also 90 hr. gas Ford motor info 610-273-2480

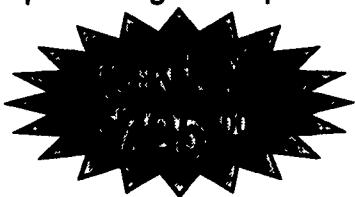
Emglo
Products Corporation

**CONTRACTORS
FARMERS
INSTALLERS**

5 HP Honda Engine w/
the popular Emglo Compressor



K5HGA-8P



FREE DELIVERY TO 48 STATES

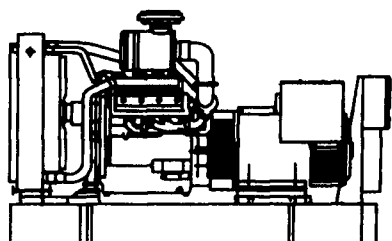
PA Residents Add 6% Tax Unless Exempt

BEILER'S PNEUMATICS

718 Vintage Rd., Christiana, PA 17509

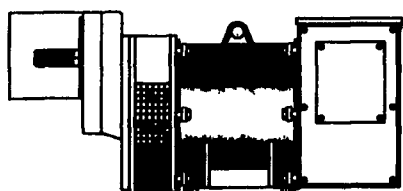
GENERATOR SYSTEMS

1-800-779-8809



New & Used 5 to 2500 KW
Diesel • Propane • Natural Gas

24 Hour Emergency Service
Sales - Installation
Maintenance Contracts • Rentals



10 To 150 KW 1800 RPM Brushless
Tractor Driven Generators

DYNA TECH[®] Ind.
Dynamic Technologies

DYNA-TECH INDUSTRIES
602 E. Evergreen Rd., Lebanon, PA 17042
717-274-8899 Fax 274-5334
Ask About Our Lightning & Surge Protection Units
Panel Mount • Plug-In • Electric Fence Protection

**DIESEL FUEL USERS...
Help Prevent Low Sulfur Fuel Problems**

Use **FPPF** Fuel Treatments

With Every Fill Up.

FUEL POWER

- #1 Year 'Round Additive
- Totally Disperses Water
- Lubricates Entire Injection System
- Cleans & Decarbonizes Injection System
- Prevents Algae Growth
- Provides Greater Power, More MPG.



LUBRICITY PLUS

- Increases Lubricity of Today's Low Sulfur Fuels.
- Prevents Fuel Injection System Wear Due To Low Lubricity in Diesel Fuel
- Prevents Stalling.
- For Premium Diesel Fuel - We Recommend a Combination of Fuel Power and Lubricity Plus



For further information, write/call:

MILLER DIESEL INC.

**DIESEL FUEL INJECTION
& TURBO CHARGER SPECIALIST
TUNE UPS AVAIL. BY APPT.**

6030 Jonestown Rd., Harrisburg, PA 17112
717-545-5931 Interstate 81 Exit 26
1-800-296-5931



"Superior Products For the Agricultural Industry"

NATURAL ORANGE

**CITRUS
HAND CLEANER &
CONDITIONER**

With PUMICE

Available In Both Pumice and Non-Pumice Formulas
CLEAN YOUR HANDS THE NATURAL WAY

NATURAL ORANGE is a Citrus Hand Cleaner and Conditioner. It's Biodegradable, and it contains NO PETROLEUM SOLVENTS. It's a Fresh Smelling Citrus-Based Hand Cleaner and Conditioner that cleans and conditions your hands THE NATURAL WAY.

NATURAL ORANGE Quickly and Gently removes the toughest Dirt, Grease, Grime, Paint, Tar, Oil, Glue, Resins, Printer's Ink, Rubber Gasket and Tile Cement, Magic Marker, Grass Stains, Shoe Polish Adhesives and Much More!

NATURAL ORANGE is a Great Skin Conditioner. REGULAR USE HELPS KEEP HANDS FEELING GREAT!

DIRECTIONS: Rub Hand Cleaner into dry hands (use no water) until soil is loosened or dissolved. Wipe dry or rinse with water.

CONTENTS: Water, d-limonene, Pumice, Glycerin, Biodegradable Surfactant, Lanolin. ALoe-Vera

KEEP OUT OF REACH OF CHILDREN. AVOID EYE CONTACT

Made in the USA

To Order Call Eastern Crown at 815-629-3505
EASTERN CROWN INC.
P.O. BOX 216, VERNON, NY 13476

Net 128 oz
(1 US Gallon)
Distributed by