

# Celebrate The Harvest

**INTERCOURSE** (Lancaster Co.) — The rich bounty of Lancaster County will be the focus of the 20th Annual Harvest Festival at Kitchen Kettle Village on Thursday, Friday and Saturday, September 15, 16, and 17, as cheerful corn creatures, a corn cob derby, lively music, and tasty food create an educational and fun-filled treat for the family.

The three-day event will celebrate the late summer and early autumn harvest that brings sweet corn, juicy apples, fresh pumpkin, and other wholesome foods to the tables of Lancaster County. Hours will be from 9 a.m. to 5:30 p.m. on Thursday and Saturday and from 9 a.m. to 8 p.m. on Friday.

Family-oriented activities at the festival will include a corn shucking contest, tours of the Jam & Relish Kitchen, pumpkin carving demonstrations, and a display of farm equipment by Ford New Holland and C.B. Hooper & Son. The young women of the Jam & Relish Kitchen will have a quilting bee, featuring a Horn of Plenty appliqued quilt with fruits and vegetables in warm harvest colors.

A fresh batch of pickled watermelon rind will be introduced at

the Jam & Relish Kitchen, along with other jams and relishes made from the harvest bounty. Visitors will be able to participate in a special canning demonstrations that involves actual preparation of foods being "put up for the winter." Special secrets for canning chow chow will be divulged, based on Kitchen Kettle Village's 40 years of expertise.

The ever-popular corn creatures will be on display during the Harvest Festival, made by various shopkeepers and employees of the village.

In the center of the village, the Hospitality Gazebo will feature complimentary punch and cookies and free balloons for the kids. There is no charge for admission to the Harvest Festival and plenty of free parking is available. Kitchen Kettle Village is a unique community of more than 30 shops and eateries, founded in 1954. It is located 10 miles east of Lancaster and 30 miles west of Exton on Route 340 in the heart of Intercourse, PA. For information, persons can call (717) 768-8261 or 1-800-732-3538.



## Yellowjacket Plague Strikes Nation

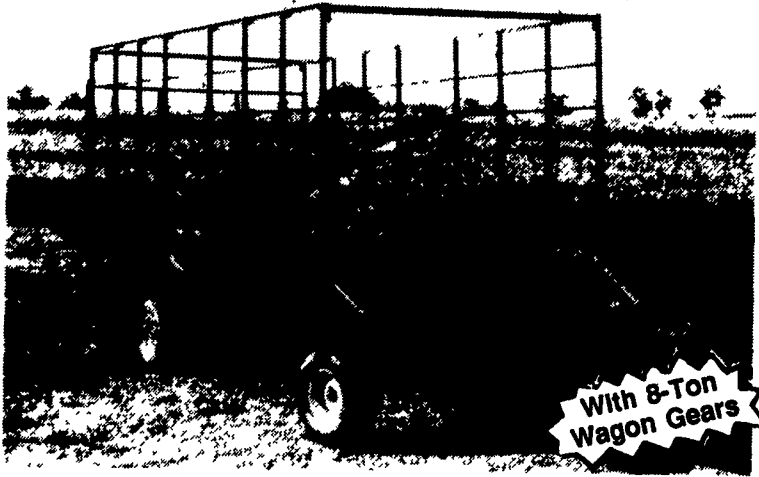
**SPRING MILLS** (Centre Co.) — Experts are predicting yellowjacket populations will reach epidemic proportions this fall in many parts of the U.S. due in part to favorable weather conditions earlier this summer. Many hospital emergency departments are already reporting record numbers of bee sting patients as the insects begin to take their toll.

"Yellowjacket populations are cyclical. Every few years when weather conditions and food supplies are favorable, nest populations explode," according to Miles Guralnick, entomologist at Vespa Labs, Inc. and expert on North American yellowjacket biology. Guralnick adds that "by the time their numbers have peaked, food supplies are dwindling, forcing them to forage at picnics and garbage areas. This is where most stings occur."

To protect yourself against this threat, avoid open refuse areas and keep all food covered when eating outdoors. Have problem nests destroyed by a professional exterminator and never swat at flying yellowjackets as frantic motion incites their attack behavior.

For more information on treating allergic reactions to yellowjacket stings, call 1-800-23-STING.

## STEEL BALE BOXES



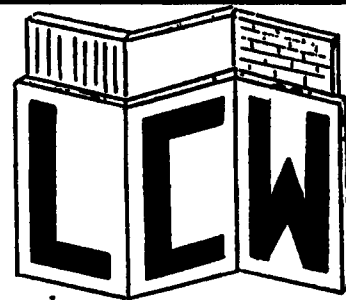
With 8-Ton Wagon Gears

3 Sizes Available... 16', 18', 20' with or without running gear

• Also will fit sides onto your flat wagon

Farm Gates Made To Your Specifications

MFD BY: **GAP HILL FARM WAGONS**  
5549 Lincoln Hwy. - Gap, PA 17527 717-442-9489  
Call Bet. 8:30 & 9:00 A.M.



# LANCO CONCRETE WALLS

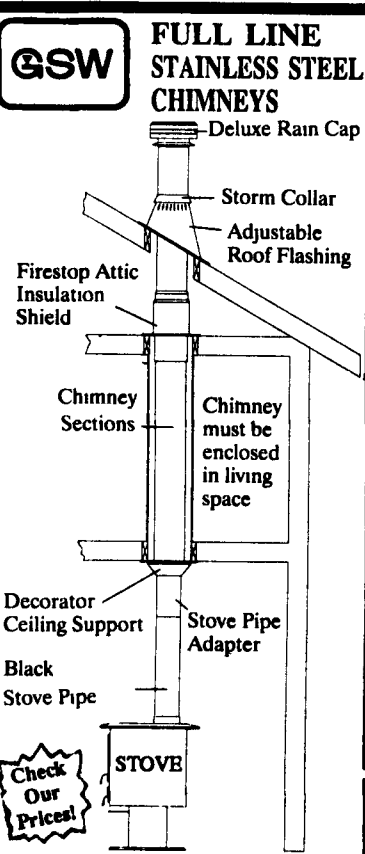
Residential • Commercial • Residential

**WE DO SCS WORK - ALL TYPES OF POURED WALLS**

- Retaining Walls
- Bunker Silos
- Manure Pits (circular or rectangular)
- Slatted Floor Deep Pits
- Footers
- Flatwork

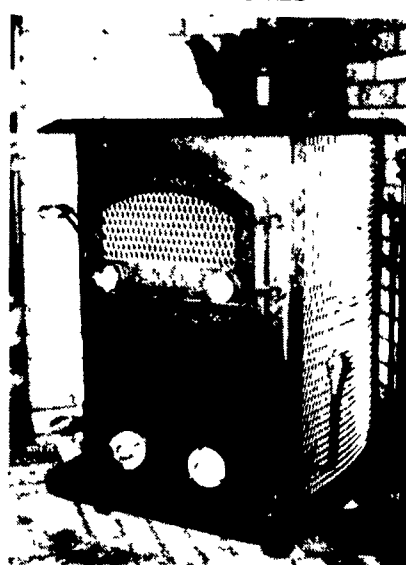
CONTACT: STEVE PETERSHEIM, JR.

P.O. Box 256, Bird-In-Hand, PA 17505  
717-291-4585 • (FAX) 717-291-4686



Mfg's Distributor  
**D.S. MACHINE SHOP**  
Dealer Inquiries Invited

CUSTOM BUILT COAL STOVES



- LARGE GLASS DOORS
- ENERGY EFFICIENT

**D.S. MACHINE SHOP**  
238B Old Leacock Rd.,  
Gordonville, PA 17529  
717-768-3853



## Water Quality An IMPORTANT Ingredient In Livestock Management

It's a fact! Contaminated water can have a costly effect on your livestock and poultry performance. Our years of experience plus hundreds of farm related treatment systems has proven the validity and practicality of correcting contaminated water.



**Martin Water Conditioning Co.**  
SPECIALISTS IN FARM WATER TREATMENT

Call us today for treatment of:  
\*Nitrates \*Bacteria \*Iron \*Sulfates  
\*pH \*Acidity/Alkalinity

548 New Holland Ave.  
Lancaster, PA 17602  
(717) 393-3612  
Along Rte. 23

Willis Sharp  
Somerset, PA &  
Surrounding Counties  
(814)-893-5081

740 E. Lincoln Ave.  
Myerstown, PA 17067  
(717) 886-7555  
Along Rte. 422