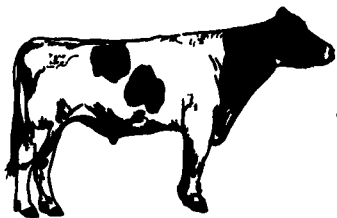


# BIG CORN CROP!!

Walk Your Corn To Market With Tend-R-Leen®



## GROW OUT CHART



From Calf...

AGE	lbs OF Feed TRL #706	FEED COST	ANIMAL WEIGHT
5 mos	359 lbs of Feed	\$25.80	441lbs Body Wt.
6 mos	427 lbs	\$30.68	545 lbs
7 mos	488 lbs	\$35.07	660 lbs
8 mos	539 lbs	\$38.73	778 lbs
9 mos	556 lbs	\$39.95	892 lbs
10 mos	580 lbs	\$41.68	1003 lbs
11 mos	608 lbs	\$43.69	1109 lbs
12 mos	608 lbs	\$43.69	1210 lbs
<b>TOTAL</b>	<b>4,165 lbs of Feed</b>	<b>\$299.29 Feed Cost</b>	



...To Kitchen

### PROJECTED COST OF FINISHED TEND-R-LEEN® STEER

350<sup>lb</sup> "CERTIFIED" TEND-R-LEEN® STARTED CALF (4 mos. old) **\$350.00**

FEED COST - 4,165 lbs TRL #706 **299.29**

DEATH LOSS **6.92**

TRUCKING **6.00**

**TOTAL FINISHED COST \$662.21**

AT 1210<sup>lbs</sup> FINISHED WEIGHT -  
BREAK EVEN **54.7¢ per lb.**

Tend-R-Leen®  
Market Price

60¢	62¢	64¢	66¢	68¢
<b>\$63.79</b>	<b>\$87.99</b>	<b>\$112.19</b>	<b>\$136.39</b>	<b>\$160.59</b>

Profit per Steer  
@ \$662.21 Cost

\* Grain Bank Corn Price and Feed Prices are for  
Week of August 29, 1994 and Change Weekly.

### VALUE OF YOUR CORN USED ON "GRAIN BANK"

350<sup>lb</sup> "CERTIFIED" TEND-R-LEEN® STARTED CALF (4 mos. old) **\$350.00**

FEED COST - 4,165 lbs TRL #706 **299.29**

DEATH LOSS **6.92**

TRUCKING **6.00**

**TOTAL FINISHED COST \$662.21**

LESS "TON FOR TON" GRAIN BANK  
4,165LBS = 74 BUSHEL'S CORN  
@ \$2.65\* Bu. **-\$196.10**

ADD CORN FREIGHT TO PENNFIELD  
12¢/Bu AVERAGE **+8.88**

**OUT OF POCKET COST AFTER CORN BANK \$474.99**

Tend-R-Leen®  
Market Price

60¢	62¢	64¢	66¢	68¢
<b>\$3.39</b>	<b>\$3.72</b>	<b>\$4.04</b>	<b>\$4.37</b>	<b>\$4.70</b>

Value of Corn  
Banked\*  
Price per Bushel

**Want to Know More About Tend-R-Leen®**  
**Call Ray Bol - Tend-R-Leen® Program Manager**

"Certified" Tend-R-Leen® Started Calves Will Be On Display at Solanco Fair - Sept. 14-15-16

## PENNFIELD TEND-R-LEEN BEEF

"Down Right Good Eatin"

OPEN 24 HOURS A DAY PA 1-800-732-0467 MD, DE & NJ 1-800-233-0202