

DON'T LOOK ANY FURTHER!
YOU'LL FIND IT IN LANCASTER FARMING'S CLASSIFIEDS

FOCUS

dhia

Diels L. Burris, Membership Development,
Call 1-800-DHIA-7827 for information.
Pennsylvania Dairy Herd Improvement Association
DHIA Service Center, Orchard Road, University Park, PA 16802

Average Farm Feed Costs For Handy Reference

To help farmers across the state to have handy reference of commodity input costs in their feeding

operations for DHIA record sheets or to develop livestock feed cost data, here's this week's average costs of various ingredients as compiled from regional reports across the state of Pennsylvania. Remember these are averages so you will need to adjust your figures up or down according to your location and the quality of your crop.

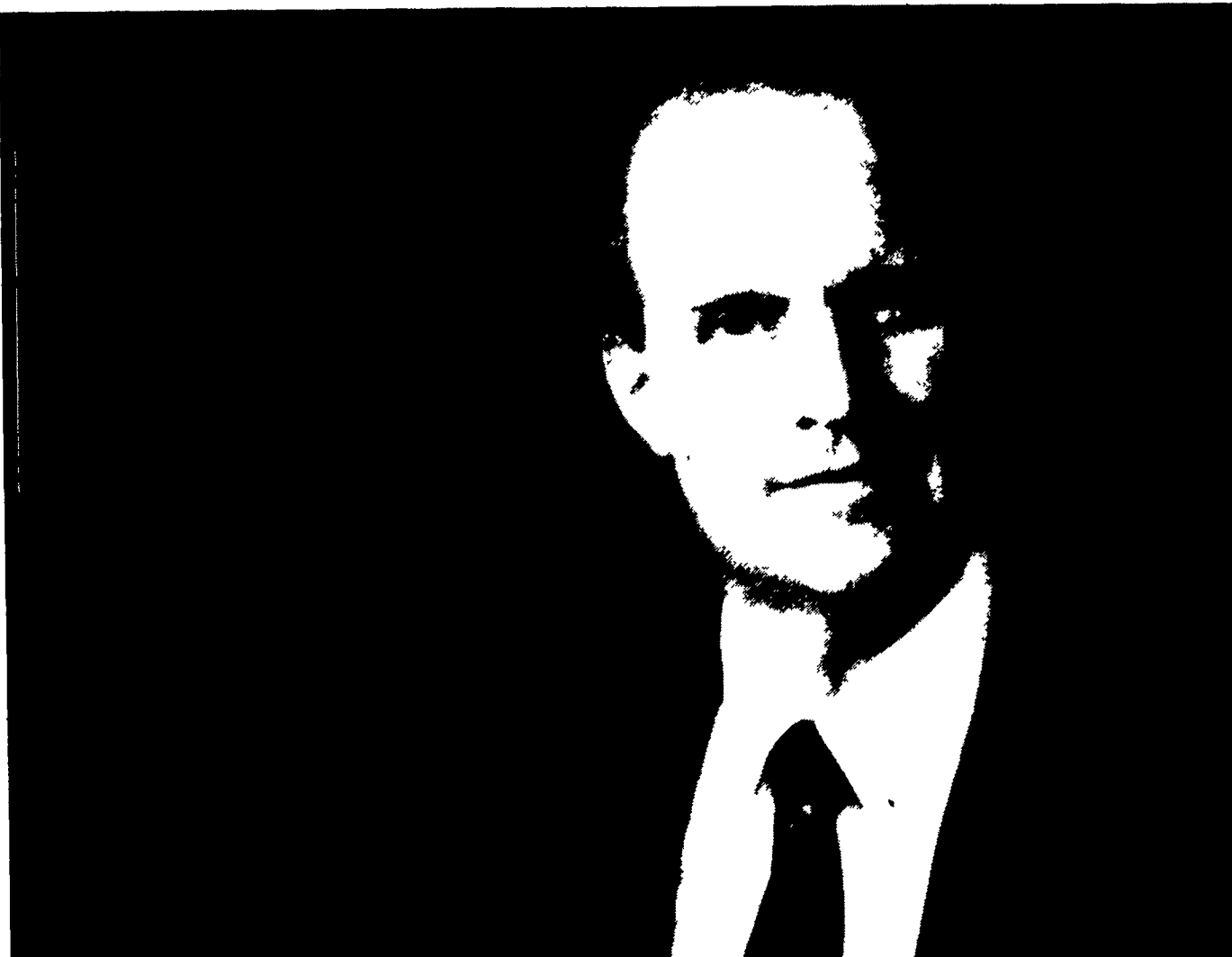
- cwt. Barley, No. 3 - 1.67 bu. 3.56
- cwt. Oats, No. 2 - 1.39 bu. 4.34 cwt.
- Soybeans, No. 1 - 5.57 bu. 9.29 cwt.
- Ear Corn 69.55 ton 3.48 cwt.
- Alfalfa Hay - 86.25 ton 4.31 cwt.
- Mixed Hay - 92.50 ton 4.63 cwt.
- Timothy Hay - 106.75 ton 5.34 cwt.
- Corn, No. 2y - 2.58 bu. 4.62 cwt.
- Wheat, No. 2 - 3.08 bu. 5.14

How Does Your Herd Compare?

STATE COLLEGE (Centre Co.) — These data are calculated using information pulled from Pennsylvania DHIA's mainframe computer each week. It is a one-week summary representing approximately one-fourth of the herds on test, as they are tested monthly.

These data are valuable from a business management standpoint and can be used for comparing your operations to the averages from about one-fourth of the herds across the state.

DHIA Averages for all herds processed between 8/17/94 and 8/24/94



Number of Herds Processed	1,055
Number of Cows Processed	65,664
Number of Cows Per Herd	62.2
Milk Per Cow (Lbs)	18,701
%-Fat	3.69
Fat Per Cow (Lbs)	691
%-Protein	3.20
Protein Per Cow (Lbs)	598
Average Days in Milk Per Cow	318
*Value for CWT Milk(\$)	13.25
*Value for CWT Grain(\$)	8.13
*Value for CWT Hay(\$)	4.28
*Value for CWT Silage(\$)	1.57
*Value for Pasture Per Day(\$)	.30
*Value for Milk Per Cow Per Year(\$)	2,478
*Feed Consumed Per Cow Per Year(Lbs)	
A: Grain	7,201
B: Hay	2,178
C: Silage	14,912
D: Day Pasture	58
*Feed Cost Per Cow Per Year(\$)	
A: Grain	585
B: Hay	93
C: Silage	234
D: Pasture	17
*Total Feed Cost Per Cow Per Year(\$)	930
*Income Over Feed Costs Per Year(\$)	1,547
*Grain to Milk Ratio	1:2.5
*Feed Cost Per CWT Milk(\$)	4.98
Avg Level For 954 SCC Herds	449,977

*Member-generated figures

Your Farm Credit Banker. Nobody Knows The Field Better.

Sure, you'll find Farm Credit bankers all buttoned up, ready to talk short- or long-term loans, mortgages and sophisticated lines of credit.

But underneath the shirt and tie, you'll find the one thing the other banks don't offer. A fellow farmer.

Most Farm Credit loan officers were born and raised on farms and got their college degrees from ag schools. Nearly all of them grew up with 4-H and the Future Farmers of America.

And, if that's not enough, every single one of our loan officers goes through the toughest ag lending training program in America.

That means when you talk to a Farm Credit loan officer about any kind of ag loan, you won't have to spend your time translating farming to banking.

Farm Credit loan officers understand farming as well as they understand finances. And because they have the same loan closing authority as many local bank presidents, they can get the job done fast.

So when you need competitive rates or creative options, see your local Farm Credit banker. Because nobody knows the field better.

FARM CREDIT
Nobody knows the field better.

Keystone Farm Credit, ACA

411 W. Roseville Road
Lancaster, PA
(717) 291-1855



CUSTOM PRE-CAST WORK

Silo Staves & Door Frames • 3 Popular Styles

- Patio Blocks
- Walk Blocks
- Lawn Steps
- Landscape Edgers
- Splash Blocks
- Tree Rings

BRICK-TILE PAVER BRICKS
1/2" x 3/4" x 7/8"

We Use Fiber Mesh In Our Concrete Colored Concrete Available On Order

Nickel Mine Brick Works
Ermer F. Stoltzfus
406 E. White Oak Road • Christiansburg, PA 17509
Located one mile east of Nickel Mines
610-593-1172
Call Between 7 & 8 A.M.